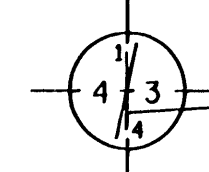


# GOODHUE COUNTY RIGHT OF WAY PLAT NO. 198

County State Aid Highway No. 12

QUARTER CORNER MONUMENTED WITH CAST IRON MONUMENT.



Right of Way in Section 4, T.109N., R.18W					
PARCEL NO.	OWNER	LOCATION	EXISTING HIGHWAY R/W EASEMENT	NEW HIGHWAY R/W EASEMENT	TOTAL R/W EASEMENT
1	INTERSTATE MILLS LLC	SE1/4 OF SE 1/4 SECTION 4	0.29 AC	0.0 AC	0.29 AC
2	GOODHUE COUNTY	SE1/4 OF SE 1/4 SECTION 4	0.35 AC	0.0 AC	0.35 AC
3	CANNON VALLEY COOPERATIVE	SE1/4 OF SE 1/4 SECTION 4	0.05 AC	0.0 AC	0.05 AC
4	ADRIAN MOFFREN	SE1/4 OF SE 1/4 SECTION 4	0.17 AC	0.0 AC	0.17 AC
5	UNKNOWN	SE1/4 OF SE 1/4 SECTION 4	0.01 AC	0.0 AC	0.01 AC
6	CITY OF KENYON	SE1/4 OF SE 1/4 SECTION 4	0.02 AC	0.0 AC	0.02 AC
7	SCOTT & SANDRA NELSON	SE1/4 OF SE 1/4 SECTION 4	0.02 AC	0.0 AC	0.02 AC

The County of Goodhue, a body politic and corporate under the laws of the State of Minnesota, pursuant to Minnesota Statutes Chapter 160.085, has caused the right of way of County State Aid Highway No. 12 to be mapped as it transgresses over and across the following described lands in the County of Goodhue, Minnesota, to wit:  
That Part of Said Right of Way included in the following described tracts of land:

Section 4, Township 109 North, Range 18 West:  
Southeast Quarter of the Southeast Quarter

The Board of Commissioners for Goodhue County, Minnesota, is hereby designating the right of way of C.S.A.H. 12 as shown on GOODHUE COUNTY RIGHT OF WAY PLAT NO. 198

Certified by *Gregory Isakson* this 29 day of AUGUST, 2011

Gregory Isakson, P.E.  
Goodhue County Engineer  
MN License 21765

I hereby certify that this plat was prepared by me or under my direct supervision and that I am a duly Licensed Land Surveyor under the laws of the State of Minnesota, that this plat meets the requirements of Minnesota Statutes Chapter 160.085, that all measurements are correctly shown on the plat, and that the plat right of way boundary is correctly designated on this plat

Certified by *Lisa M. Hanni* this 31<sup>st</sup> day of August, 2011

Lisa M. Hanni, L.S.  
Goodhue County Surveyor  
MN License 23048

Document No. 588512

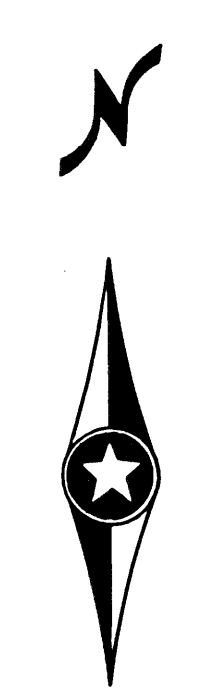
I hereby certify that this instrument was filed in the office of the County Recorder for record this 16<sup>th</sup> day of Sept, 2011, at 3:30 o'clock pm and was duly recorded in the Goodhue County Records as file number C.C. 198

By *Lisa M. Hanni*

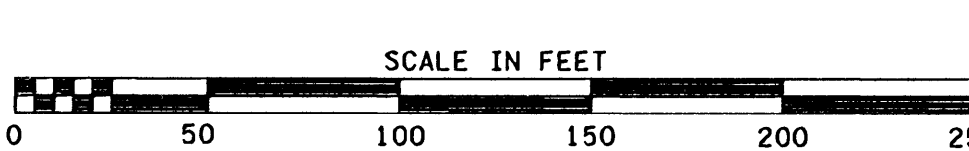
Lisa M. Hanni, L.S.  
Goodhue County Recorder

NE1/4 - SE1/4

NW1/4 - SW1/4



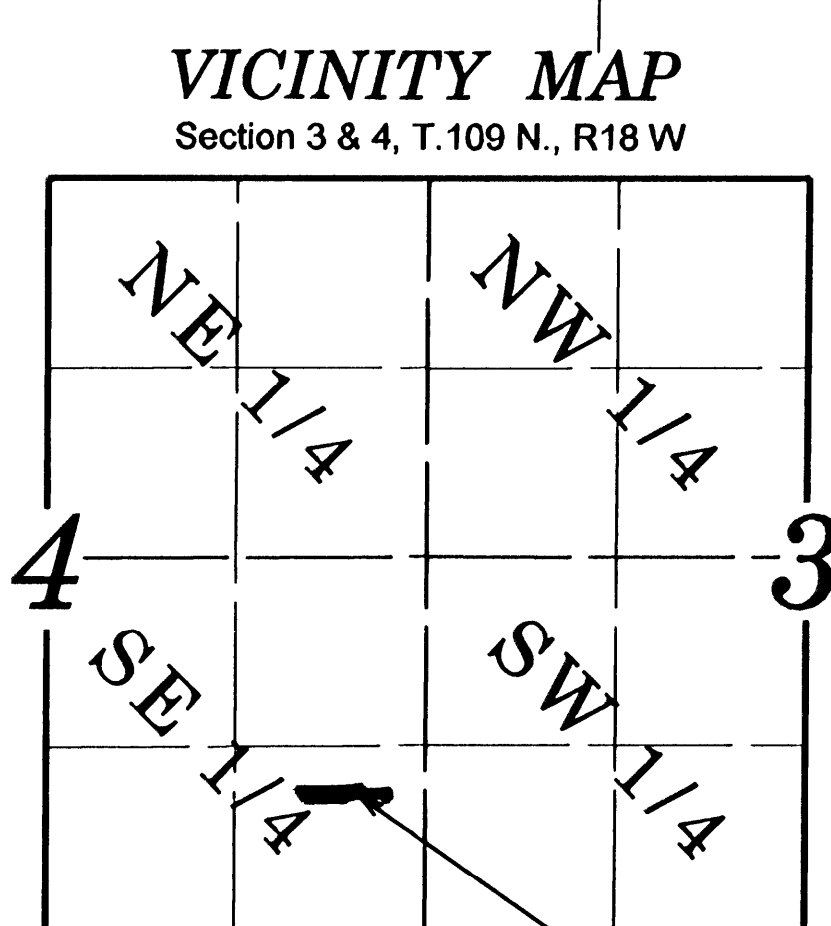
LEGEND	
	Plat Boundary
	Parcel Line
	Deed Line
	Existing Right of Way
	Section Line
	Quarter Line
	Sixteenth Line
	Goodhue County Monument
	Found Monument



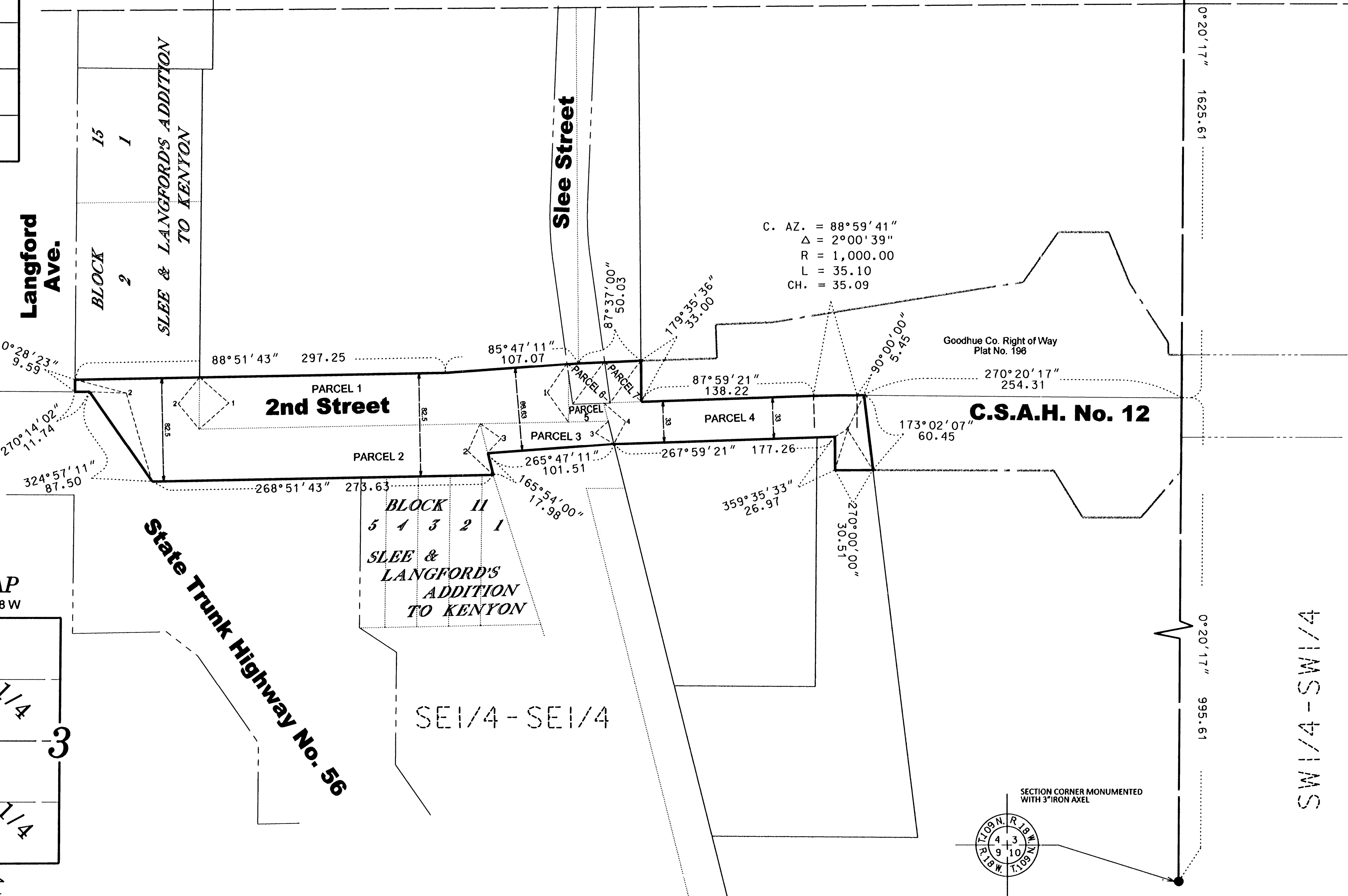
This azimuth system is based on the HARN Adjustment of NAD 1983 Goodhue County coordinate system with the North being 00 degrees 00 minutes 00 seconds, and all azimuth are referenced clockwise from north.

This plat is subject to easements of record.

Monuments will be set at all angle points after construction is complete.



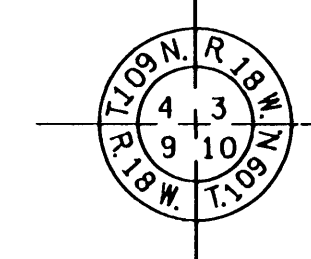
PLAT NO. 198  
NOT TO SCALE



Goodhue Co. Right of Way Plat No. 196

C.S.A.H. No. 12

SECTION CORNER MONUMENTED WITH 3" IRON AXEL



SW1/4 - SW1/4