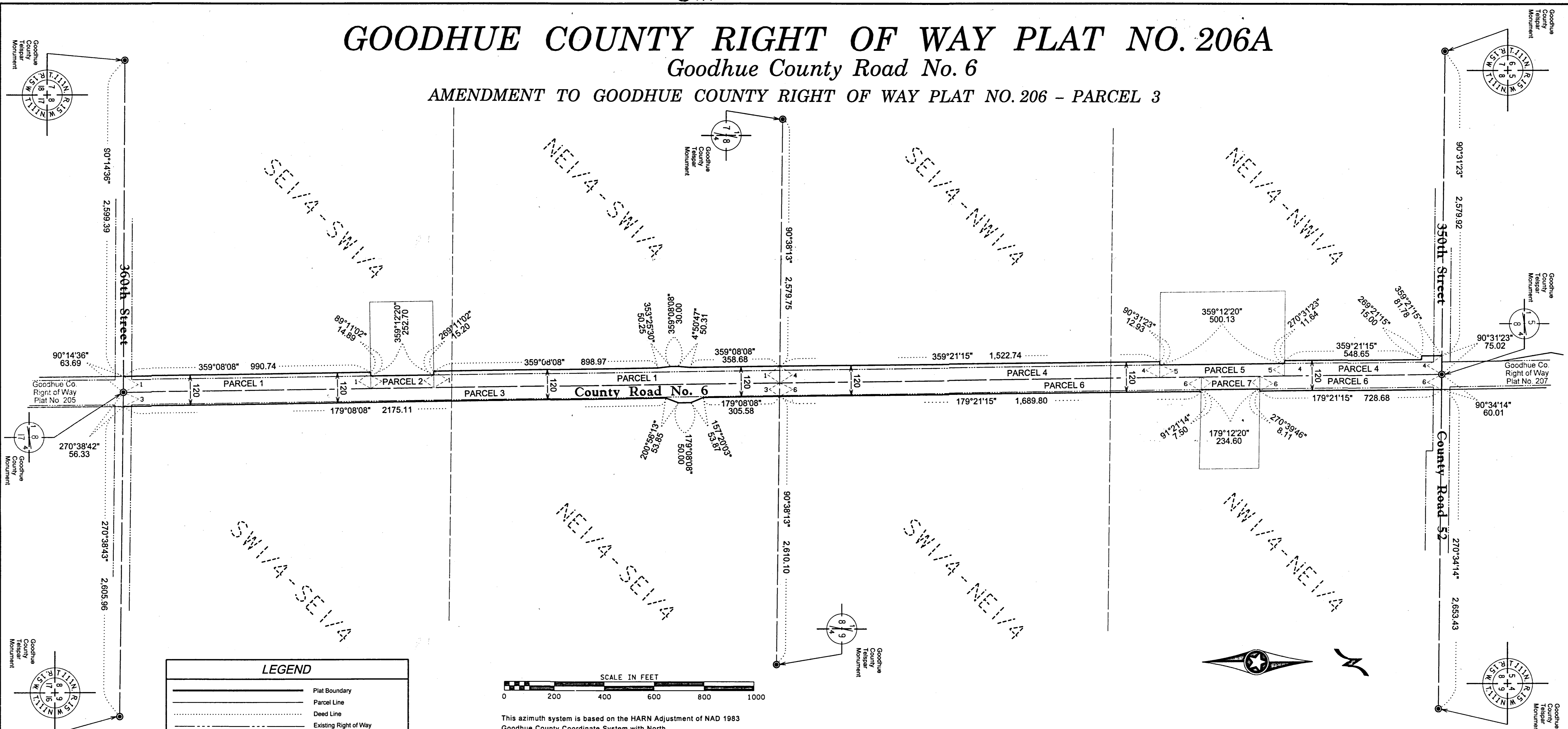


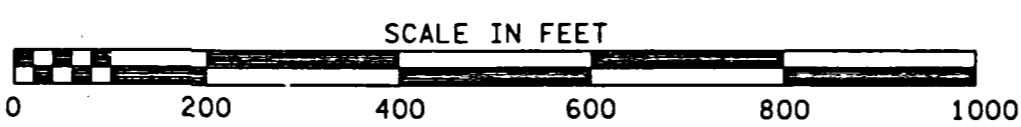
GOODHUE COUNTY RIGHT OF WAY PLAT NO. 206A

Goodhue County Road No. 6

AMENDMENT TO GOODHUE COUNTY RIGHT OF WAY PLAT NO. 206 - PARCEL 3



LEGEND	
	Plat Boundary
	Parcel Line
	Deed Line
	Existing Right of Way
	Section Line
	Quarter Line
	Sixteenth Line
	Goodhue County Monument
	Found Monument



This azimuth system is based on the HARN Adjustment of NAD 1983 Goodhue County Coordinate System with North being 00 degrees 00 minutes 00 seconds, and all azimuths are referenced clockwise from North.

This plat is subject to easements of record.
Monuments will be set at all angle points after construction is complete.

The County of Goodhue, a body politic and corporate under the laws of the State of Minnesota, pursuant to Minnesota Statutes Chapter 160.085, has caused the right of way of County Road No. 6 to be mapped as it transgresses over and across the following described lands in the County of Goodhue, Minnesota, to wit:

That part of said right of way included in the following described tracts of land:
Section 8, Township 111 North, Range 15 West:

The Board of Commissioners for Goodhue County, Minnesota, is hereby designating the right of way of County Road No. 6 as shown on GOODHUE COUNTY RIGHT OF WAY PLAT NO. 206A

Certified by *Gregory Isakson* this 27th day of September, 2014

Gregory Isakson, P.E.
Goodhue County Engineer
MN License 21765

I hereby certify that this plat was prepared by me or under my direct supervision and that I am a duly Licensed Land Surveyor under the laws of the State of Minnesota, that this plat meets the requirements of Minnesota Statutes Chapter 160.085, that all measurements are correctly shown on the plat, and that the plat right of way boundary is correctly designated on this plat

Certified by *Lisa M. Hanni* this 26th day of September, 2014

Lisa M. Hanni, L.S.
Goodhue County Surveyor
MN License 23048

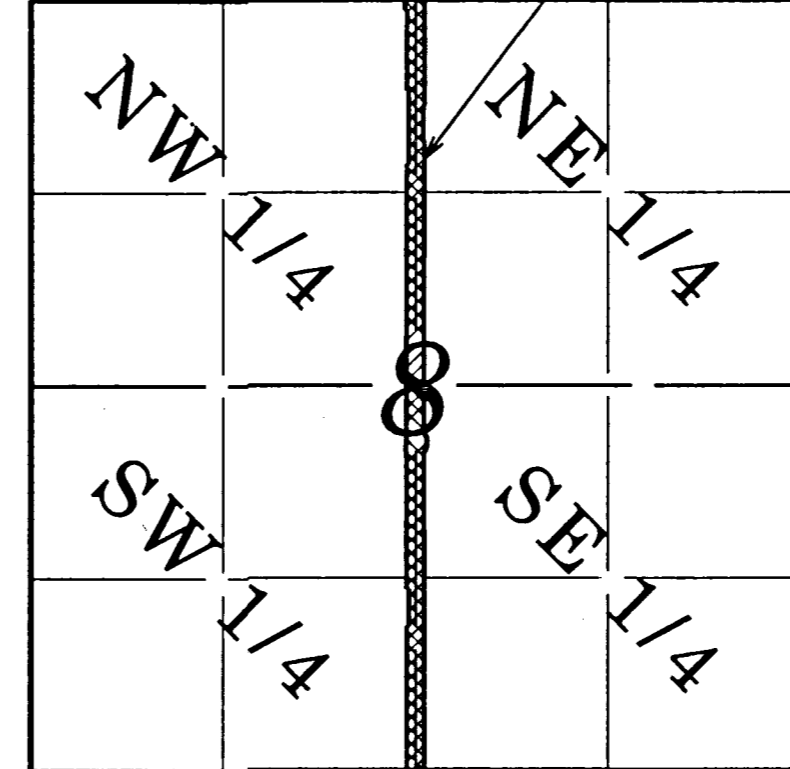
Document No. 6217132

I hereby certify that this instrument was filed in the office of the County Recorder for record this day of September, 2014, at 2:27 o'clock pm and was duly recorded in the Goodhue County Records as file number 62-266A

By *Lisa M. Hanni*

Lisa M Hanni, L.S.
Goodhue County Recorder

VICINITY MAP
Section 8, T.111 N., R.15 W.
PLAT NO. 206



NOT TO SCALE

Right of Way in Section 8, T 111N, R 15W

PARCEL NO.	OWNER	LOCATION	EXISTING HIGHWAY R/W	NEW HIGHWAY R/W	TOTAL R/W IN FEE INTEREST
1	Dennis E. and Ruth M. Buck 330080802	E 1/2 OF SW 1/4	2.74 AC	0.83 AC	3.57 AC
2	Dolores G. Buck Revocable Trust 330080800	SE 1/4 OF SW 1/4	0.29 AC	0.0 AC	0.29 AC
3	Daniel J. and Steven P. Nibbe 330080700	W 1/2 OF SE 1/4	3.02 AC	0.32 AC	3.34 AC
4	Lyle S. and Loretta Lexvold 330080500	E1/2 OF NW 1/4	2.49 AC	0.68 AC	3.17 AC
5	William M. and Jeanne M. Roper 330080400	NE 1/4 OF NW 1/4	0.57 AC	0.0 AC	0.57 AC
6	Lyle S. and Loretta Lexvold 330080500	W 1/2 OF NE 1/4	2.78 AC	0.35 AC	3.13 AC
7	Todd A. and Sherie Majerus 330080501	NW 1/4 OF NE 1/4	0.27 AC	0.00 AC	0.27 AC