

GOODHUE COUNTY RIGHT OF WAY PLAT NO. 221

Goodhue County Road No. 2

I hereby certify that this plat was prepared by me or under my direct supervision and that I am a duly Licensed Land Surveyor under the laws of the State of Minnesota, that this plat meets the requirements of Minnesota Statutes Chapter 160.085, that all measurements are correctly shown on the plat, and that the plat right of way boundary is correctly designated on this plat.

Certified by *[Signature]* this 26th day of April, 2024

Lisa M. Hanni, L.S.
Goodhue County Surveyor
MN License 23048

Document No. 698789

I hereby certify that this instrument was filed in the office of the County Recorder for record this day of ~~March~~ 2024, at 9:00 o'clock, a.m. and was duly recorded in the Goodhue County Records as document number 698789

By *[Signature]*

Lisa M. Hanni, L.S.
Goodhue County Recorder

The County of Goodhue, a body politic and corporate under the laws of the State of Minnesota, pursuant to Minnesota Statutes Chapter 160.085, has caused the right of way of County Road No. 2 to be mapped as it transgresses over and across the following described lands in the County of Goodhue, Minnesota, to wit:

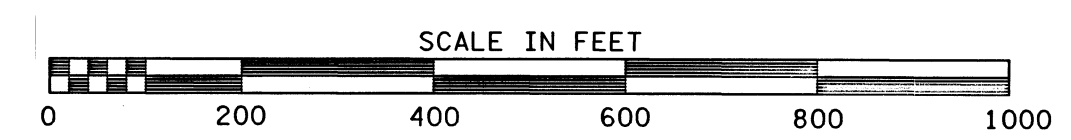
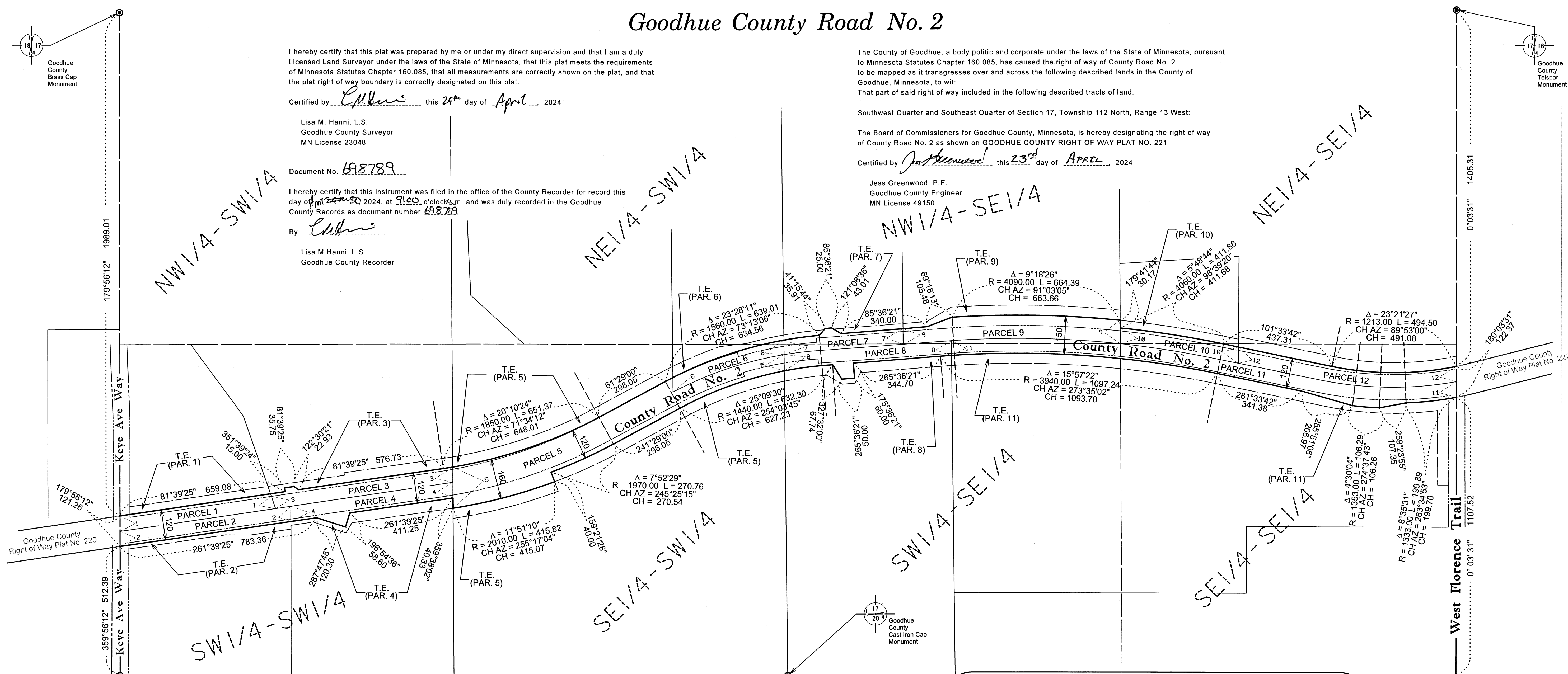
That part of said right of way included in the following described tracts of land:

Southwest Quarter and Southeast Quarter of Section 17, Township 112 North, Range 13 West:

The Board of Commissioners for Goodhue County, Minnesota, is hereby designating the right of way of County Road No. 2 as shown on GOODHUE COUNTY RIGHT OF WAY PLAT NO. 221

Certified by *[Signature]* this 23rd day of April, 2024

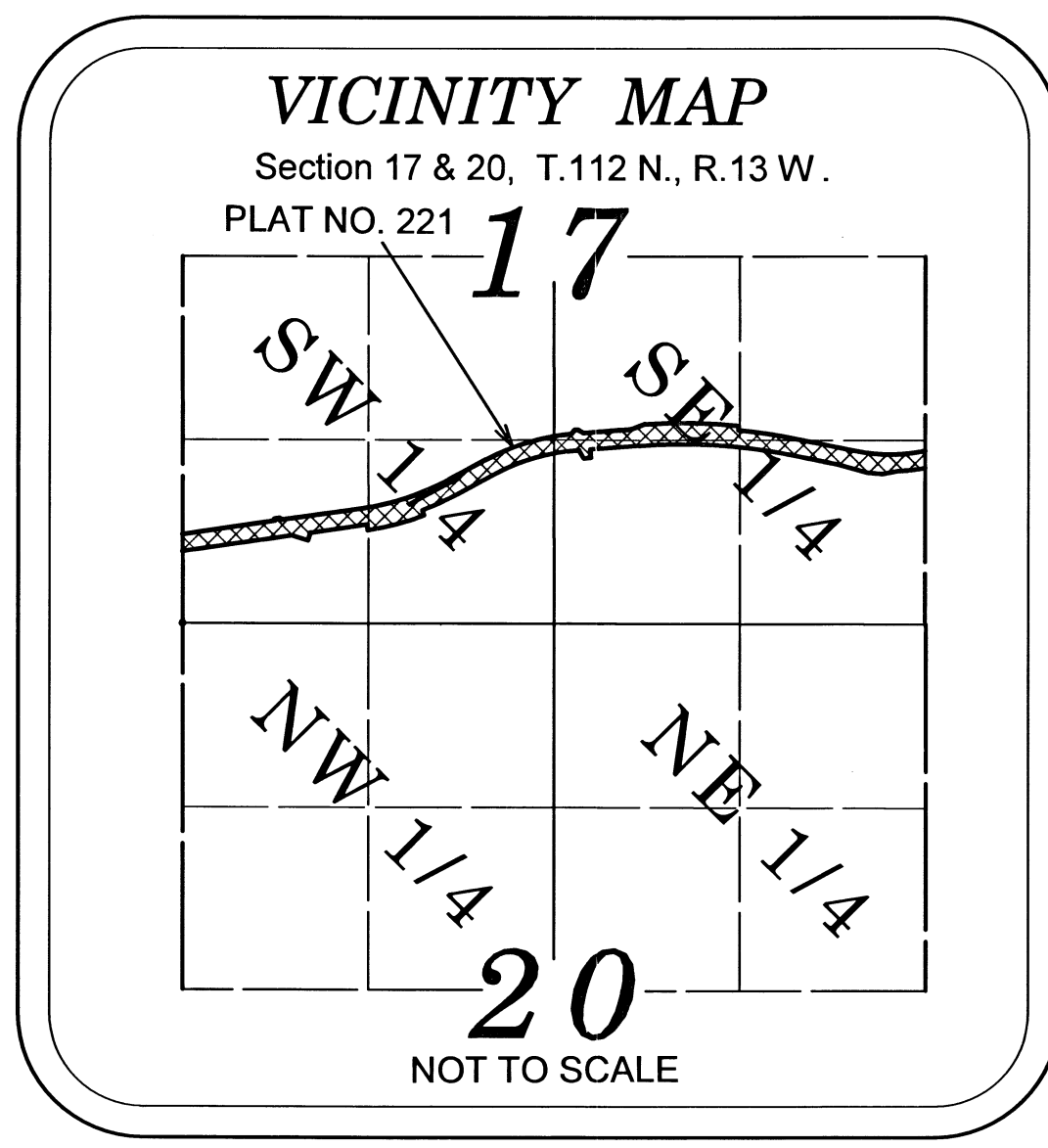
Jess Greenwood, P.E.
Goodhue County Engineer
MN License 49150



This azimuth system is based on the HARN Adjustment of NAD 1983 Goodhue County Coordinate System with North being 00 degrees 00 minutes 00 seconds, and all azimuths are referenced clockwise from North.

This plat is subject to easements of record.
Monuments will be set at all angle points after construction is complete.

LEGEND	
	Plat Boundary
	Parcel Line
	Deed Line
	Existing Right of Way
	Section Line
	Quarter Line
	Sixteenth Line
	Temporary Easement
	Goodhue County Monument
	Found Monument



Right of Way in Section 17, T 112N, R 13W

PARCEL NO.	OWNER	LOCATION	EXISTING HWY. R/W	NEW HWY. R/W	TOTAL R/W IN FEE INTEREST	TEMPORARY EASEMENT	EASEMENT EXPIRES ON
1	32.017.1000 Andrew & Sarah Klenke	SW 1/4 of SW 1/4	0.71 AC	0.14 AC	0.85 AC	0.38 AC	1Jan26
2	32.017.0800 Daniel & Mary Roper	SW 1/4 of SW 1/4	0.79 AC	0.14 AC	0.93 AC	0.30 AC	1Jan26
3	32.017.0700 Alan J Axelson	SW 1/4 of SW 1/4	0.82 AC	0.18 AC	1.00 AC	0.59 AC	1Jan26
4	32.017.0900 Laing Properties LLC	SW 1/4 of SW 1/4	0.74 AC	0.23 AC	0.97 AC	0.49 AC	1Jan26
5	32.017.0602 Justin & Samantha Bohi	SE 1/4 of SW 1/4	2.64 AC	1.05 AC	3.69 AC	2.18 AC	1Jan26
6	32.017.0601 Ryan & Amy Olson	SE 1/4 of SW 1/4 NE 1/4 of SW 1/4	0.46 AC	0.11 AC	0.57 AC	0.33 AC	1Jan26
7	32.017.0300 Ryan & Amy Olson	NW 1/4 of SE 1/4 SW 1/4 of SE 1/4	0.49 AC	0.19 AC	0.68 AC	0.19 AC	1Jan26
8	32.017.0600 Justin & Samantha Bohi	SW 1/4 of SE 1/4	0.71 AC	0.29 AC	1.00 AC	0.60 AC	1Jan26
9	32.017.0100 Prairie Island Indian Comm	NW 1/4 of SE 1/4	0.98 AC	0.71 AC	1.69 AC	0.72 AC	1Jan26
10	32.017.0401 Leon C Klenke	NE 1/4 of SE 1/4 SE 1/4 of SE 1/4	0.54 AC	0.14 AC	0.68 AC	0.33 AC	1Jan26
11	32.017.0403 Leon C Klenke	SE 1/4 of SE 1/4 NW 1/4 of SE 1/4 SW 1/4 of SE 1/4	2.31 AC	0.52 AC	2.83 AC	1.99 AC	1Jan26
12	32.017.0404 Leon C Klenke	SE 1/4 of SE 1/4	1.0 AC	0.20 AC	1.20 AC	0.80 AC	1Jan26