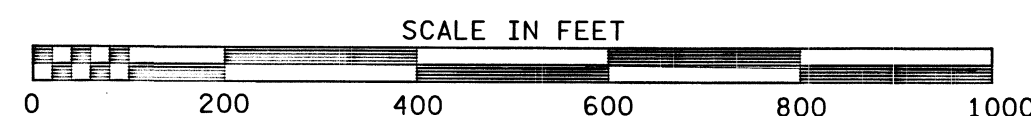
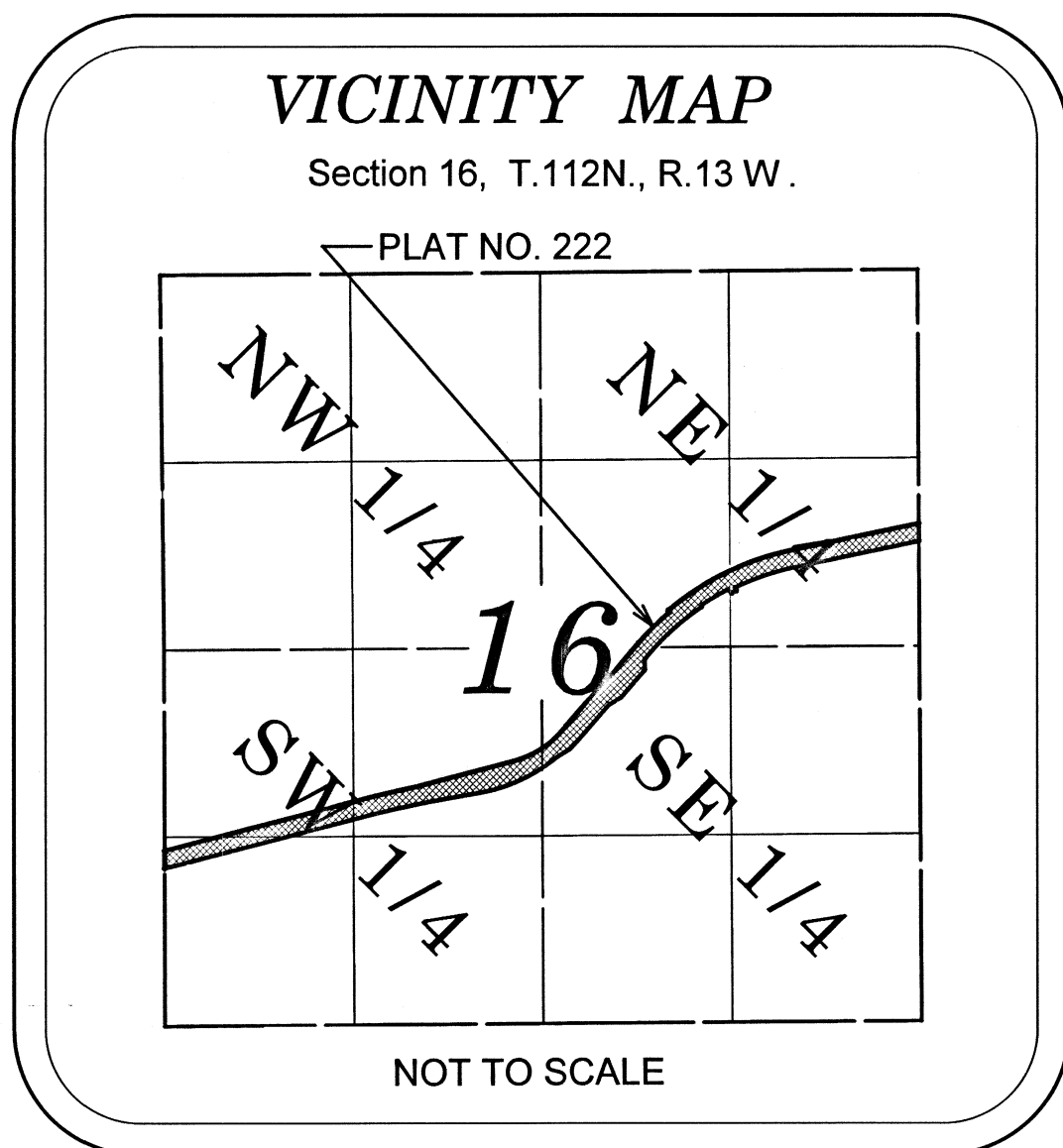


# GOODHUE COUNTY RIGHT OF WAY PLAT NO. 222

## Goodhue County Road No. 2

Goodhue County Telspar Monument

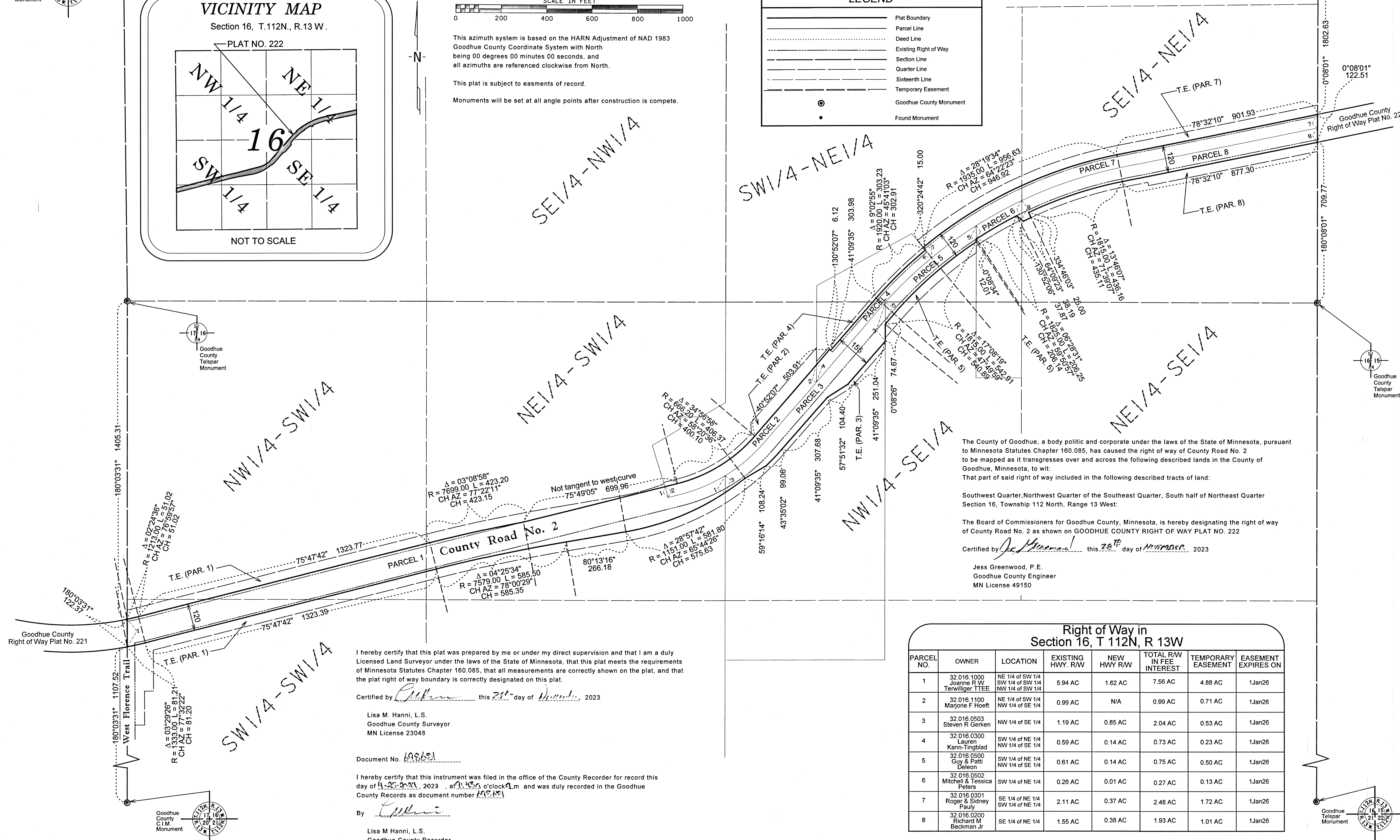
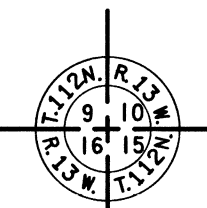


This azimuth system is based on the HARN Adjustment of NAD 1983 Goodhue County Coordinate System with North being 00 degrees 00 minutes 00 seconds, and all azimuths are referenced clockwise from North.

This plat is subject to easements of record.  
Monuments will be set at all angle points after construction is complete.

LEGEND	
	Plat Boundary
	Parcel Line
	Deed Line
	Existing Right of Way
	Section Line
	Quarter Line
	Sixteenth Line
	Temporary Easement
	Goodhue County Monument
	Found Monument

Goodhue County Telspar Monument



The County of Goodhue, a body politic and corporate under the laws of the State of Minnesota, pursuant to Minnesota Statutes Chapter 160.085, has caused the right of way of County Road No. 2 to be mapped as it transgresses over and across the following described lands in the County of Goodhue, Minnesota, to wit:

That part of said right of way included in the following described tracts of land:

Southwest Quarter, Northwest Quarter of the Southeast Quarter, South half of Northeast Quarter Section 16, Township 112 North, Range 13 West:

The Board of Commissioners for Goodhue County, Minnesota, is hereby designating the right of way of County Road No. 2 as shown on GOODHUE COUNTY RIGHT OF WAY PLAT NO. 222

Certified by *Jess Greenwood* this 28<sup>th</sup> day of November, 2023

Jess Greenwood, P.E.  
Goodhue County Engineer  
MN License 49150

Right of Way in Section 16, T 112N, R 13W							
PARCEL NO.	OWNER	LOCATION	EXISTING HWY. RW	NEW HWY RW	TOTAL RW IN FEE INTEREST	TEMPORARY EASEMENT	EASEMENT EXPIRES ON
1	32.016.1000 Joanne R W Terwilliger TTEE	NE 1/4 of SW 1/4 SW 1/4 of SW 1/4 NW 1/4 of SW 1/4	5.94 AC	1.62 AC	7.56 AC	4.88 AC	1Jan26
2	32.016.1100 Marjorie F Hoeft	NE 1/4 of SW 1/4 NW 1/4 of SE 1/4	0.99 AC	N/A	0.99 AC	0.71 AC	1Jan26
3	32.016.0503 Steven R Geiken	NW 1/4 of SE 1/4	1.19 AC	0.85 AC	2.04 AC	0.53 AC	1Jan26
4	32.016.0300 Leuren Karh-Lingblad	SW 1/4 of NE 1/4 NW 1/4 of SE 1/4	0.59 AC	0.14 AC	0.73 AC	0.23 AC	1Jan26
5	32.016.0500 Guy & Patti Deison	SW 1/4 of NE 1/4 NW 1/4 of SE 1/4	0.61 AC	0.14 AC	0.75 AC	0.50 AC	1Jan26
6	32.016.0502 Mitchell & Tessa Peters	SW 1/4 of NE 1/4	0.26 AC	0.01 AC	0.27 AC	0.13 AC	1Jan26
7	32.016.0301 Roger & Sidney Pauly	SE 1/4 of NE 1/4 SW 1/4 of NE 1/4	2.11 AC	0.37 AC	2.48 AC	1.72 AC	1Jan26
8	32.016.0200 Richard M Beckman Jr	SE 1/4 of NE 1/4	1.55 AC	0.38 AC	1.93 AC	1.01 AC	1Jan26

I hereby certify that this plat was prepared by me or under my direct supervision and that I am a duly Licensed Land Surveyor under the laws of the State of Minnesota, that this plat meets the requirements of Minnesota Statutes Chapter 160.085, that all measurements are correctly shown on the plat, and that the plat right of way boundary is correctly designated on this plat.

Certified by *Lisa M Hanni* this 28<sup>th</sup> day of November, 2023

Lisa M Hanni, L.S.  
Goodhue County Surveyor  
MN License 23048

Document No. *198691*

I hereby certify that this instrument was filed in the office of the County Recorder for record this day of *November*, 2023, at *10:53* o'clock *A.M.* and was duly recorded in the Goodhue County Records as document number *198691*

By *Lisa M Hanni*

Lisa M Hanni, L.S.  
Goodhue County Recorder

Goodhue County Telspar Monument

