

ZUMBROTA T10N R15W

PINE ISLAND TOWNSHIP ROAD MAP

T109N R15W
GOODHUE COUNTY, MINNESOTA

Be it resolved by the Town Board of PINE ISLAND Township, Goodhue County, Minnesota, that the roads and roadway easements as shown on the above map are hereby determined to be duly established 66 foot roadway easements unless otherwise shown on the above map.

The above resolution was duly adopted by the PINE ISLAND Township Board at its regular town board meeting held on the 22nd day of August 19 97.

[Signature]
Township Clerk
[Signature]
Township Chairperson

It is the intent of these Township road maps to identify the easements and to label by Township Road Numbers all roads under the Township jurisdiction. The roads so identified are considered to be a full 66 foot roadway easement, 33 feet on each side of the centerline unless otherwise noted on the maps.

I hereby certify that I have prepared this map showing the PINE ISLAND Township Road locations and have generally described the easements for said roads and that said road designations are in accordance with the designated system as established by the PINE ISLAND Township Board. I further certify that I am a duly Registered Land Surveyor under the Laws of the State of Minnesota.

Vincent A. Fangman Date 9/29/1997
Vincent A. Fangman Reg. No. 14888 Pine Island, Minnesota

COUNTY RECORDER DOCUMENT NUMBER 338646

I hereby certify that this instrument was filed in the office of the County Recorder for record on this 22nd day of October 19 97 at 2:00 o'clock P.M. and was duly recorded in Goodhue County Records.

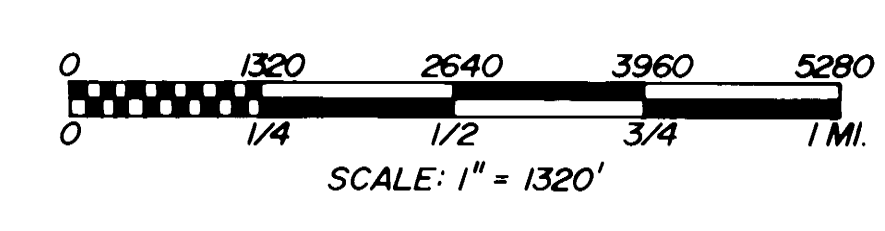
Craig J. Anderson
Goodhue County Recorder

SEE ATTACHED ROADWAY EASEMENT DESCRIPTIONS
LABELED EXHIBIT "A"

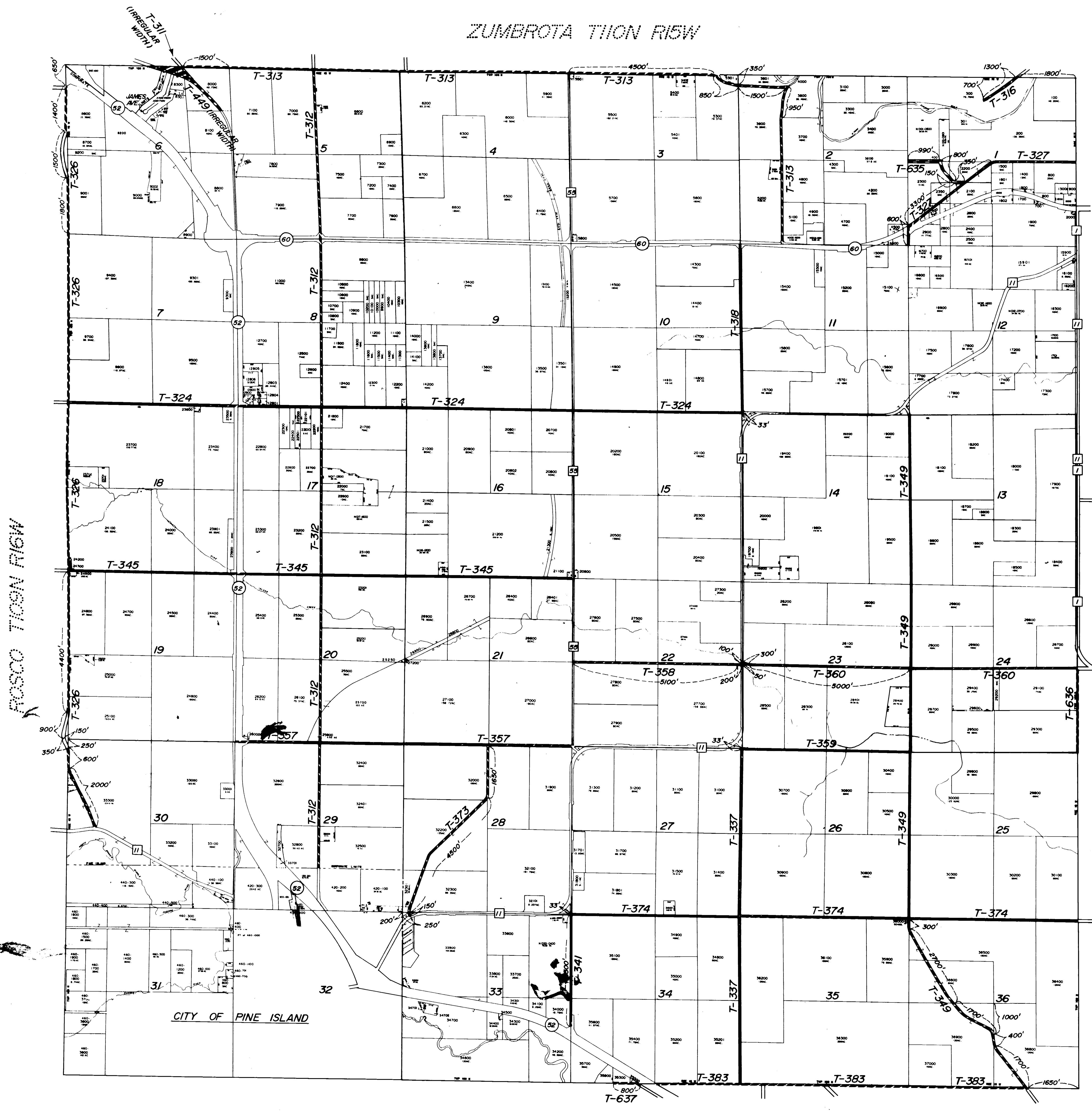


LEGEND

36	SECTION NUMBER
45	COUNTY ROAD
58	STATE HIGHWAY
T-22	TOWNSHIP ROAD



NOTE: THE DATA USED TO PREPARE THE ABOVE MAP WAS OBTAINED BY METHODS OTHER THAN FIELD SURVEY. DIMENSIONS SHOWN ARE APPROXIMATE.



OLMSTED COUNTY NEW HAVEN T109N R15W