

VASA TOWNSHIP ROAD MAP

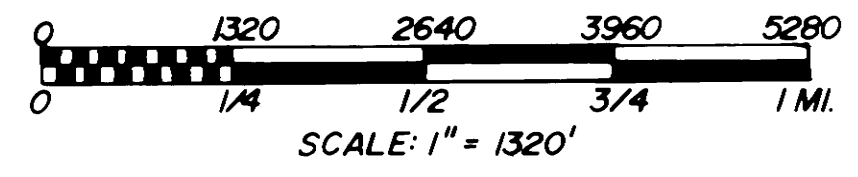
T112N R16W & T113N R16W

GOODHUE COUNTY, MINNESOTA

NOTE: THE DATA USED TO PREPARE THE ABOVE MAP WAS OBTAINED BY METHODS OTHER THAN FIELD SURVEY. DIMENSIONS SHOWN ARE APPROXIMATE.

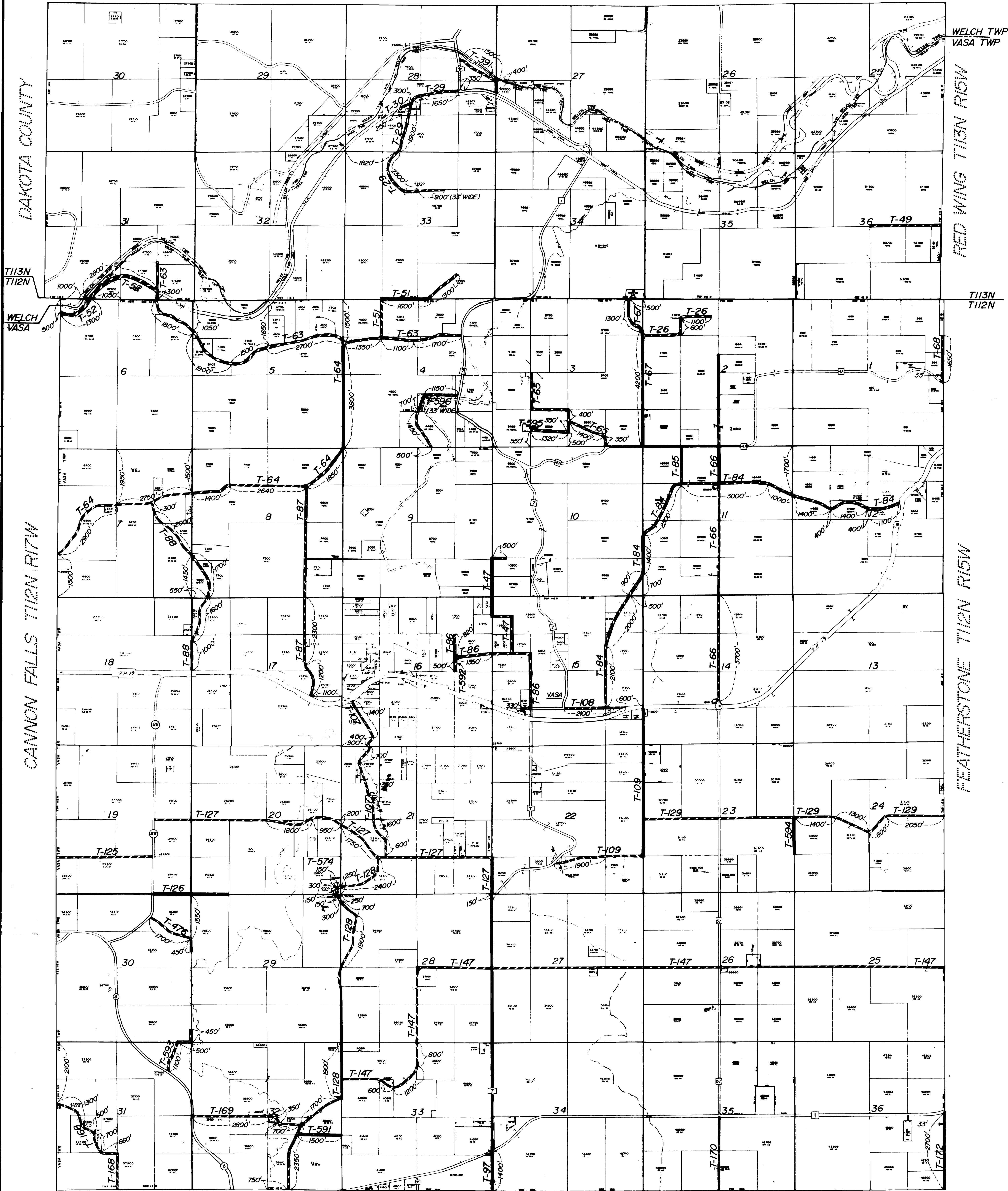
SEE ATTACHED ROADWAY EASEMENT DESCRIPTIONS. LABELED EXHIBIT "A"

NORTH



LEGEND

- 36 SECTION NUMBER
- 45 COUNTY ROAD
- 50 STATE HIGHWAY
- T-22 TOWNSHIP ROAD



It is the intent of these Township road maps to identify the segments and to label by Township Road Number all roads under the Township jurisdiction. The roads so identified are considered to be a full 66 foot roadway easement, 33 feet on each side of the existing centerline unless otherwise noted on the map.

COUNTY RECORDS DOCUMENT NUMBER 303525
 I hereby certify that this instrument was filed in the office of the County Recorder for record on this 12th day of May 1988 at 10:00 a.m. and was duly recorded in Goodhue County records.
 Vincent A. Fahgan
 County Recorder

I hereby certify that I have prepared this map showing the Vasa Township road locations and have generally described the easements for said roads and that the same are shown hereon as shown hereon are hereby determined to be duly established 66 foot roadway easements unless otherwise shown hereon.
 The above resolution was duly adopted by the Vasa Town Board at its regular Town Board meeting held on the 25th day of March 1988.
 Vincent A. Fahgan Date 3/31/1988
 Vincent A. Fahgan, Reg. No. 14888 Pine Island, Minnesota
 Township Chairperson

Be it resolved by the Town Board of Vasa Township, Goodhue County, Minnesota, that the roads and roadway easements as shown hereon are hereby determined to be duly established 66 foot roadway easements unless otherwise shown hereon.
 The above resolution was duly adopted by the Vasa Town Board at its regular Town Board meeting held on the 25th day of March 1988.
 Vincent A. Fahgan Date 3/31/1988
 Vincent A. Fahgan, Reg. No. 14888 Pine Island, Minnesota
 Township Chairperson