

# Benham Addition

## To Red Wing

This is to certify that one Samuel R. Benham and Rebecca A. Benham his wife of Red Wing Goodhue Co. Minn. are the proprietors of Benham's Addition to Red Wing Minn. This Addition embraces a piece of land beginning at the center of the north west 1/4 Section #32 Town #113 north of Range #14 West, thence North 20 feet, thence West 574 feet, thence South 1335 feet, thence East 574 feet, thence North to point of Beginning, containing 17 5/16 acres. We have caused said land surveyed by S. A. Hart and subdivided into lots and blocks as indicated in this Plat and authorize the records of the same in accordance with Law as Benham's Addition to Red Wing hereby donating for public use the streets and alleys thereon the breadth of said streets and alleys as marked in figures, the length and breadth of lots and blocks as indicated in this Plat in figures. In testimony whereof said parties have hereunto respectively set their hands and seals this 20th day of October 1877.

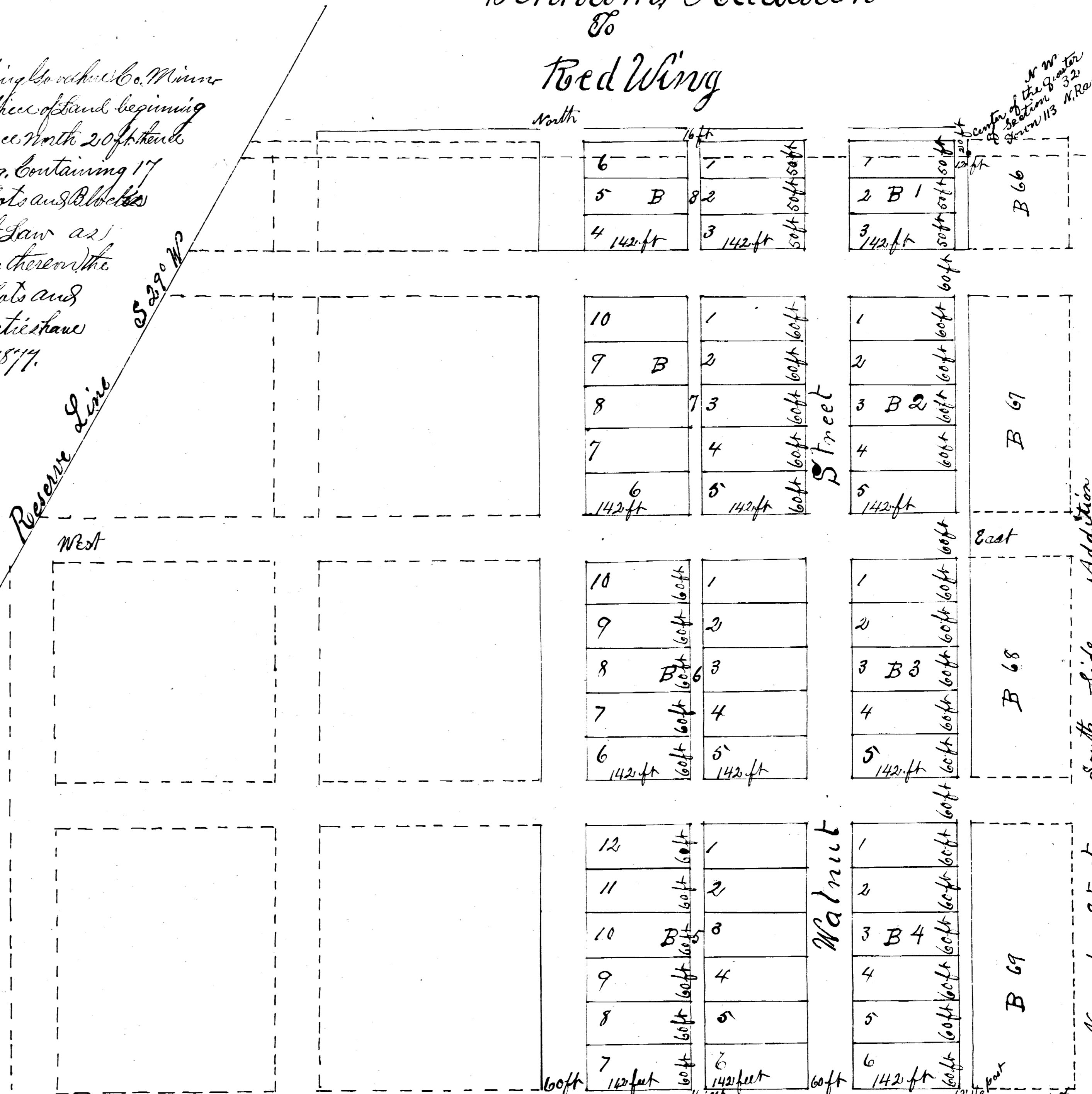
Executed in presence of Cyrus C. Benham, Samuel R. Benham, Rebecca A. Benham, State of Minnesota, County of Goodhue, ss. Be it known that on this 29 day of October 1877 personally came before me Samuel R. Benham and Rebecca A. Benham the signers and sealers of the foregoing Plat and acknowledge the same to be their own free act and deed. S. A. Hart Notary Public Goodhue County Minnesota

Office of City Recorder City of Red Wing Goodhue County State of Minnesota. I do hereby certify that at an adjourned regular meeting of the City Council of the City of Red Wing held at the Council Room in said City on the 12th day of November A.D. 1877 the plat hereunto was presented to said City Council and was by them duly accepted, and said addition was accepted as herewith platted, to be designated and known as Benham's Addition to Red Wing, according to the plat and survey herein set forth. Witness my hand and seal official at the City of Red Wing Goodhue County State of Minnesota this 12th day of November A.D. 1877.

Phil Skillman City Recorder City of Red Wing Goodhue Co. Minn.

Office of Register of Deeds Goodhue County Minn. This Plat was filed in this office for record on the 17th day of Nov 1877 at 5 P.M. & duly recorded in Book No. 2 of Plats on page 17. C. McCarty Reg. of Deeds Goodhue Co. Minn.

The land embraced in the above Plat are quit and the change noted Red Wing November 17th 1877 S. J. Williams County Auditor



Scale of Construction 100 feet to the inch

South I hereby certify that this is a true map of Benham's Addition to Red Wing as surveyed by me October 20th 1877 S. A. Hart Surveyor

North corner of NE quarter of SW quarter of Section 32 Town 113 Range 14

This Addition embraces a piece of land beginning at the center of the North West quarter of Section No. 32 Township No. 113 North Range No. 14 West, thence North 20 feet, thence West 574 feet, thence South 1335 feet, thence East 574 feet, thence North to point of beginning, containing A. 17 5/16 acres. S. A. Hart Surveyor