

State of Minnesota } ss. D. A. Stone, the register  
 County of Goodhue }  
 do hereby certify that I caused the  
 fifteen (15) West, do hereby certify that I caused the  
 addition to the Village of Pine Island  
 in said county and did also cause the  
 accompanying plat thereof to be made  
 for that purpose, that at the time of  
 the surveying and laying out of said  
 addition I did plant and fix securely  
 in the ground, at the North east corner  
 of lot number four (4) of Block number  
 five (5) of said addition, a stone of the  
 size and dimensions, and placed in  
 the manner as directed by S. A. Hart,  
 the person who surveyed said addition  
 for a corner from which to make future  
 surveys. and I do give and dedicate  
 to the general public the several streets  
 thereon indicated, the same to be opened  
 and used by the said public forever as  
 such streets.

In witness whereof I have hereunto set  
 my hand and seal this 16 day of August  
 A.D. 1878,  
 Signed, Sealed and Counted }  
 in the Presence of } A. K. Stone (Seal)  
 C. N. White  
 Notary Public

State of Minnesota } ss.  
 County of Goodhue }  
 do hereby certify that on  
 this 16th day of August A.D. 1878, came  
 personally before me the undersigned  
 a Notary Public in said State residing  
 in said County, A. K. Stone to me well  
 known to be the person named in and  
 who executed the foregoing certificate and  
 acknowledged that he executed the same  
 fully and voluntarily for the uses and  
 purposes therein expressed.

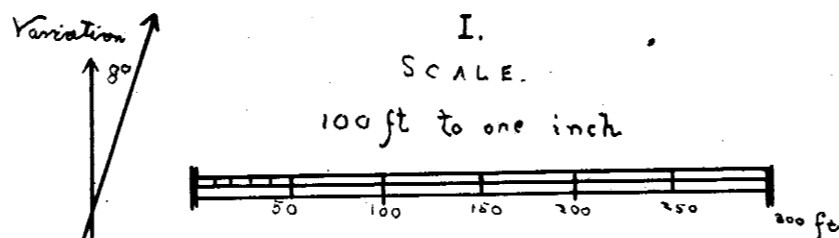
Notary Public  
 C. N. White  
 Notary Public

State of Minnesota } ss.  
 County of Goodhue }  
 do hereby certify that the accompanying plat  
 is a true and correct plat of A. K. Stone's  
 Addition in the Village of Pine Island  
 in said County, and State as the same was  
 on the 13 day of August, A.D. 1878 laid out  
 and surveyed by me. That the said plat  
 embraces a tract of land known as the  
 North West quarter of the North West  
 quarter of section number thirty-two  
 (32) in Township number one hundred  
 and nine (109) North of Range Number  
 fifteen (15) West. That the said plat  
 truly and correctly delineates the blocks,  
 lots, streets and alleys of said (Addition)  
 as laid out and surveyed by me the number  
 of the blocks is indicated by the heavy black  
 figures in the center of each of them. The  
 number of the lots is indicated by the small  
 black figures in the center of each, and the red  
 figures in each lot indicate the length  
 and width of the same. The red figures  
 found in the streets and alleys indicate  
 the width of the same. The survey to  
 commence at the North East corner of the  
 North West quarter of the North West  
 quarter of said section of aforesaid, and  
 runs thence south 1320 feet; thence west  
 406 feet; thence North 1320 feet; thence east  
 on Section line 406 feet to the place of beginning  
 Given under my hand this 13 day of August  
 A.D. 1878.

S. A. Hart  
 Surveyor

# PLAT OF A. K. STONE'S ADD. TO PINE ISLAND.

## EXPLANATIONS.



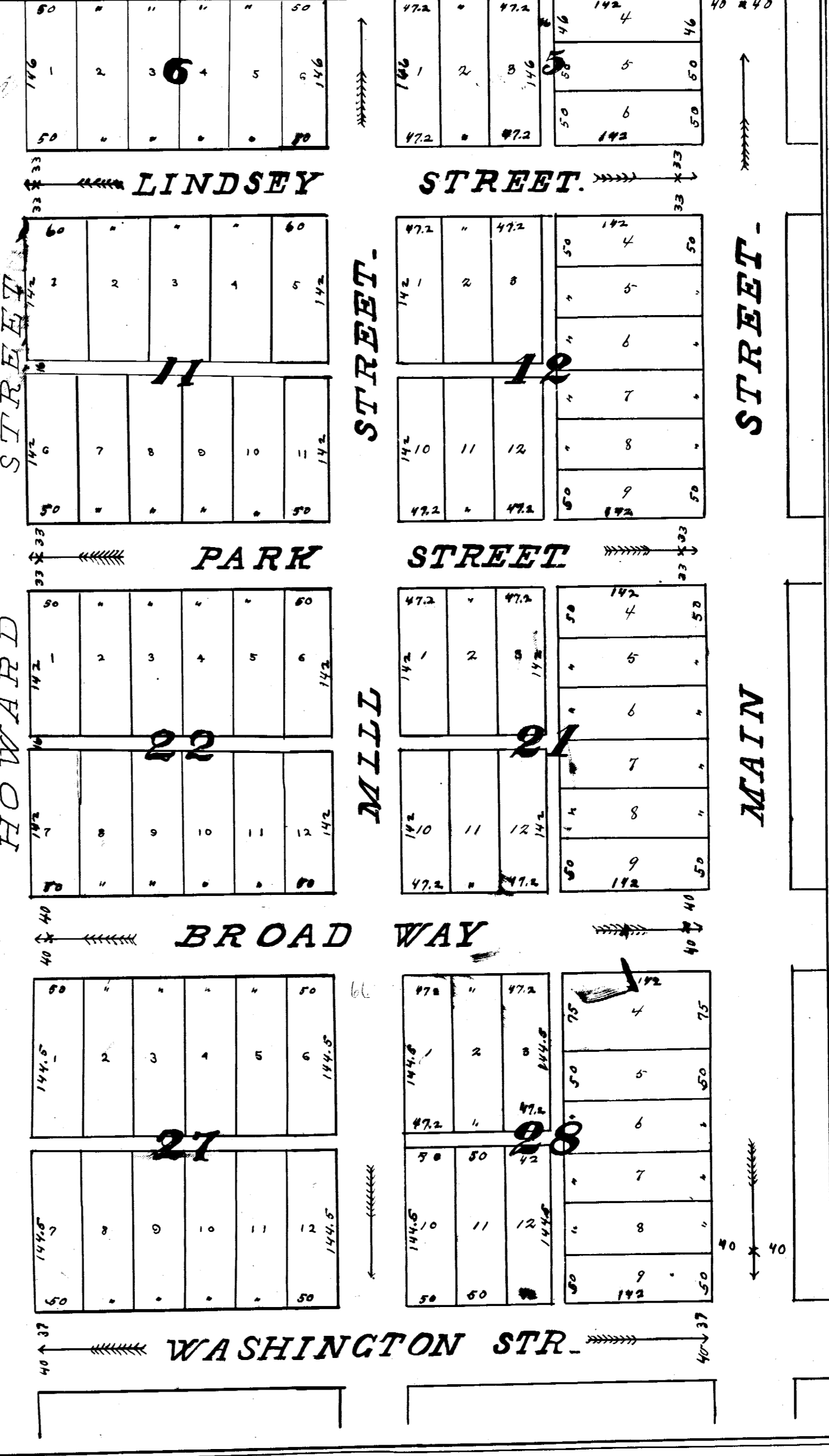
A. K. Stone's Addition to Pine Island is located on  
 the North West quarter of the North West quarter Section 32  
 (Thirty two), Township 108 North, Range 15 West from the 5th  
 principal Meridian. Survey commenced at established moni-  
 ment at North East Corner of the North West quarter of the North West  
 of Section aforesaid, and runs thence South 1320 feet, thence  
 West 406 feet, thence North 1320 feet; thence East on Section line  
 406 feet to the place of beginning.

Block numbers are marked in heavy black figures.  
 Lot numbers are marked in small black figures.  
 Measures of Streets, Alleys & Lots are marked in red figures.

This plat is made according to survey made of Me  
 S. A. Hart on the 13th day of August 1878.  
 S. J. Willard  
 Draftsman & Surveyor

All Fees are Paid on the land embraced in this Plat  
 of A. K. Stone's Add. to Pine Island and the Change  
 entered and noted.  
 Certd, Red Wing August 24<sup>th</sup> 1878.  
 S. J. Willard  
 County Auditor  
 Goodhue County  
 Minn.

In Register  
 Volume 47<sup>th</sup> pt  
 Book 186  
 Page 20



See Notice  
 of Location  
 Book 106  
 Map Records  
 Page  
 272