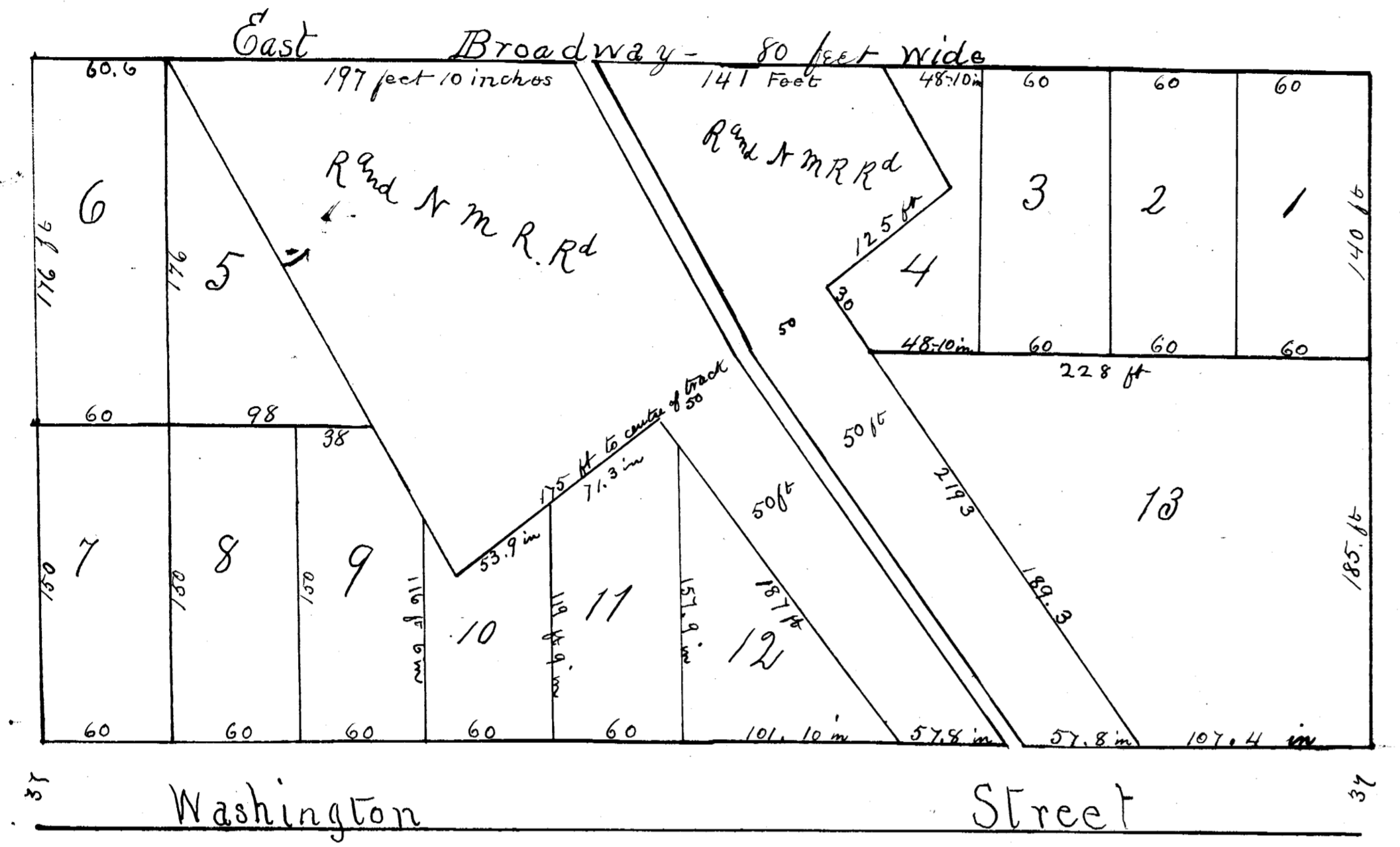


See location of Part of E. Broadway Book 79 M.R. Page 332

# PLAT OF G. GUSTIN'S ADDITION TO PINE ISLAND.

I certify that the within Plat of G. Gustin's addition to the Village of Pine Island has this 5th day of March 1879 been approved by the common Council of said Village  
Pine Island March 5th 1879  
John King Village Recorder

Register of Deeds Office  
Goodhue County Minn.  
This Plat was filed for Record in this office March 19th A.D. 1879 at 11:20 A.M.  
Chas. Ford Register of Deeds  
per him Clerk



66 ft  
First Street  
66 ft

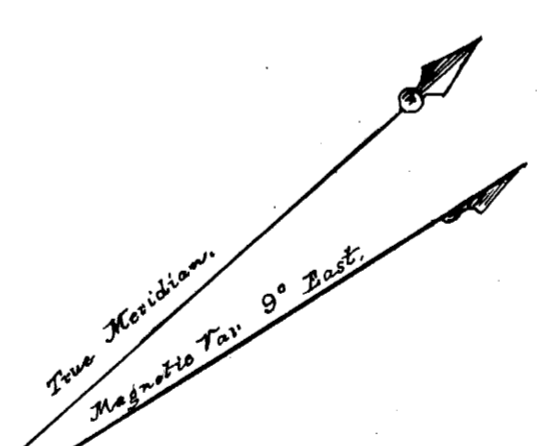
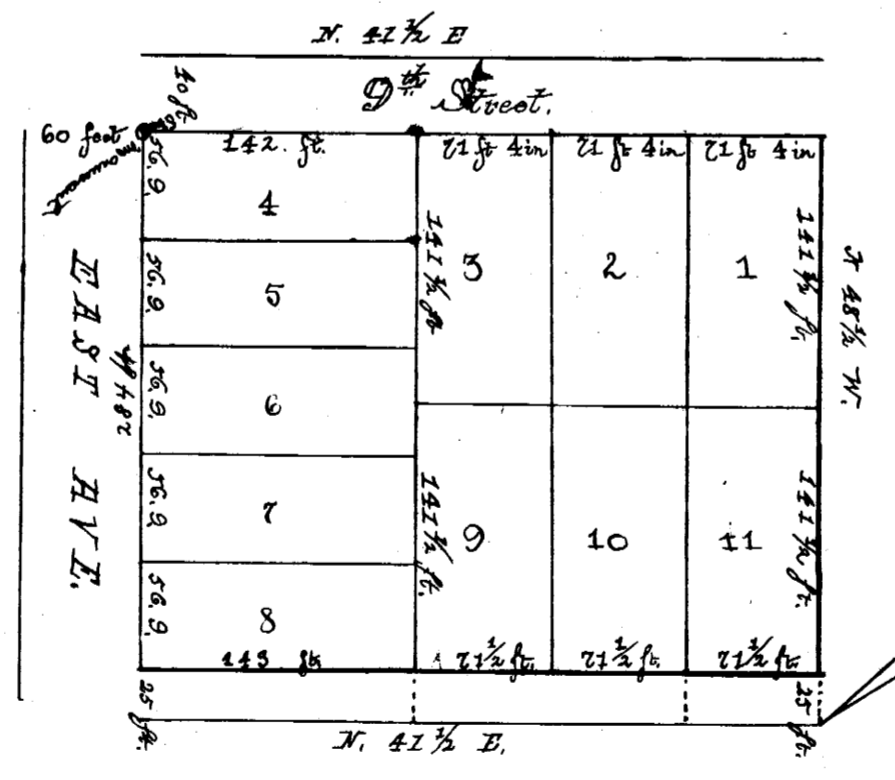
Pine Island Minn  
Dec 12 1878  
This is to certify that I have this day laid off into lots as an addition to the village of Pine Island at the request of Giles Gustin the following tract of land 5 1/2 acres described as follows Commencing at the SE corner of the NW 1/4 of the NW 1/4 of section thirty two Thence running North five and one half (5 1/2) chains Thence West Ten (10) chains Thence South five and one half (5 1/2) chains Thence East Ten chains to place of beginning The accompanying Plat gives length and breadth of lots and width of streets in feet and inches all lots are numbered in center  
Geo W Fargo Surveyor  
On this 13th day of December A.D. 1878 personally appeared before me Giles Gustin and acknowledged that he had caused the above described tract of land to be surveyed and laid out into lots and streets as described in the above Plat as an addition to the village of Pine Island Goodhue county  
C. R. White Notary Public

## J. W. PARKER'S SUBDIVISION OF THE WEST HALF OF LOT No 10 and Lots No 11 and 12 of BLOCK NO. ONE OF FREEBORN AND CO'S ADDITION TO RED WING COUNTY OF GOODHUE STATE OF MINNESOTA.

I hereby certify this is a true plat of J. W. Parker's subdivision of the West half of Lot No 10 and Lots No 11 and 12 of Block No 1 of Freeborn and Co's addition to Red Wing as surveyed by me August 31st 1871

S. A. Hart - Surveyor

Scale 100 feet to the inch



Office of Register of Deeds  
Goodhue County Minn.  
This Plat was filed for Record in this Office July 11th A.D. 1878 at 4:25 o'clock P.M.  
Charles Ward Register of Deeds  
By N.H. Brown Dep't.

Office of City Recorder of the City of Red Wing Goodhue County Minnesota

I hereby certify that the above plat of J. W. Parker's subdivision of the West half of Lot 10 and Lots 11 and 12 of Block No 1 of Freeborn and Co's addition to Red Wing Minnesota was duly presented to the City Council of said City at a regular meeting held April 7th 1879 and was duly accepted by said Council according to the description and designation above given  
Witness my hand and official seal this 7th day of April A.D. 1879  
John S. Doolittle City Recorder

State of Minnesota ss.  
County of Goodhue  
Do it know that on this 8th day of November A.D. 1877 personally appeared before the undersigned a Notary Public residing in said County, James W. Parker, the proprietor of J. W. Parker's subdivision of the west half of Lot No 10 and Lots No 11 and 12 of Block No 1 of Freeborn and Co's addition to Red Wing as designated in the foregoing plat and acknowledged the same to be his free act and deed.

John S. Doolittle Notary Public  
Goodhue County Minn.

All taxes on the lots embraced in this Plat are paid by J. W. Parker or otherwise. Certs filed July 11th 1879  
C. W. McLeod  
County Clerk