

Lewis Rearrangement of Lots 5, 6, 7, 8, 9, 10 + 11 of Siltons
Subdivision of Lots 4-5 of Block 3 of Preston Co addition to Red Wing

Know all men by these presents that I Emma H. Lewis the owner in fee simple
of Lots 5, 6, 7, 8, 9, 10 + 11 of part of Siltons Sub Division of Preston Co addition to Red Wing
and I M. B. Lewis her husband do hereby certify that we have caused the said lots
to be rearranged and plotted as shown by the accompanying plat

In presence of
C. C. Webster
S. C. Ware

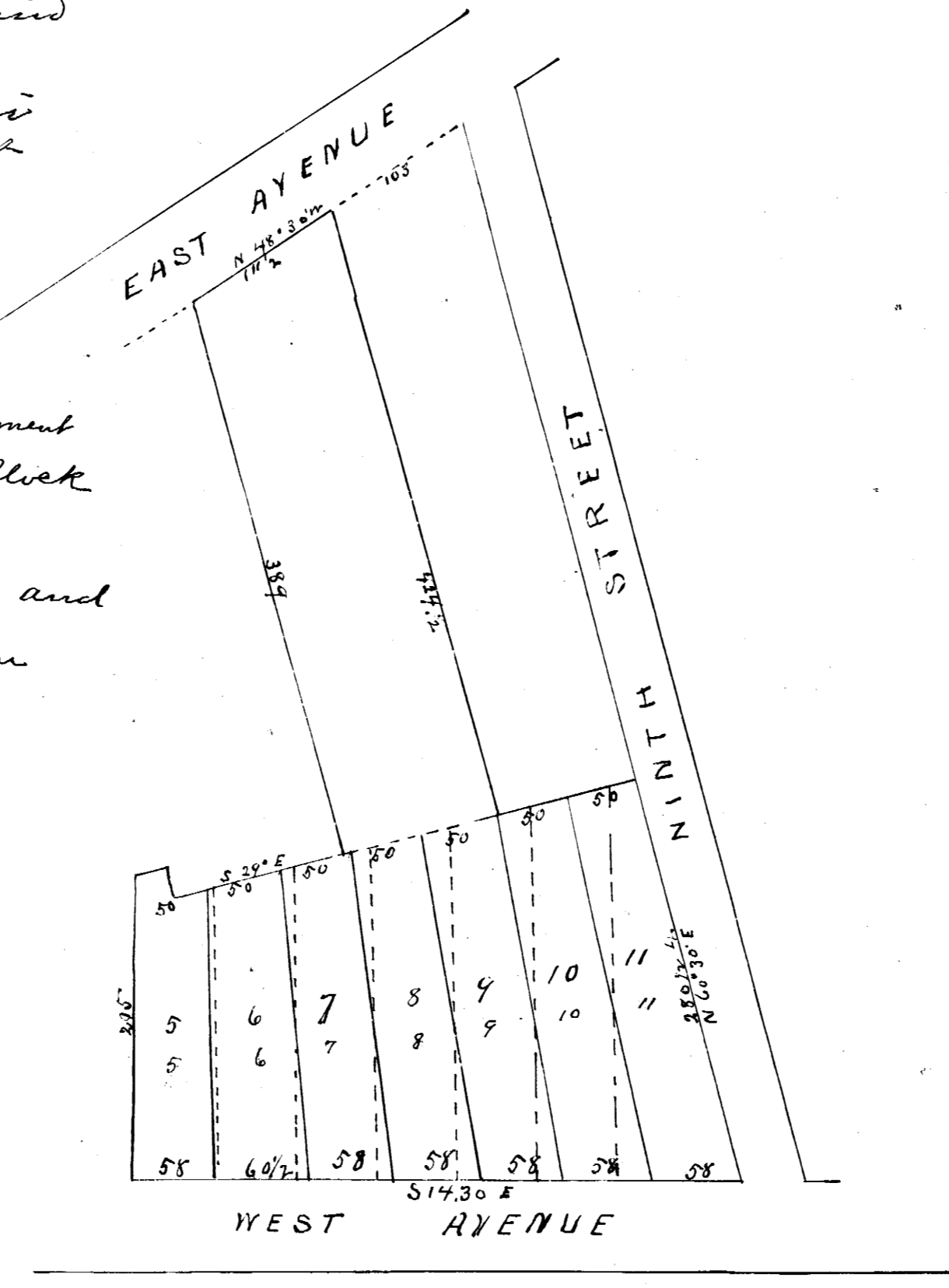
Emma H. Lewis
M. B. Lewis

State of Minnesota }
County of Goodhue } Be it known that
in this 28th day of August 1885 before me
personally came Emma H. Lewis and M. B.
Lewis her husband, to me known to be
The signers and sealers of the foregoing
Certificate and they acknowledged
the same to be their own free act and
deed

(Seal)

C. C. Webster
County Auditor
of Goodhue County

I hereby certify that the accompanying
Plat is a correct delineation of Lewis Rearrangement
of a part of Siltons subdivision of lots 3 + 4 of Block
3 of Preston Co addition to Red Wing
The black lines indicate Lewis rearrangement and
the red lines show Siltons subdivision
Wm Danforth, Surveyor
Red Wing August 4th 1885



The taxes on the Property
Covered by the above Plat are
paid by Tax Sales or otherwise
transformed
Red Wing Nov. 19th 1885
C. C. Webster
County Auditor

Filed for Record Nov. 18th 1885
at 11²⁰ O'clock A. M.

C. Johnson
Register of Deeds