

See Vacation Book 133 MR Page 637  
See Vacation Book 136 MR Page 264

State of Minnesota, ss.  
County of Goodhue, ss.  
I, C. H. Meyer, County Auditor of Goodhue County, Minnesota, hereby certify that this plat was presented to the County Board of Goodhue County, Minnesota, at its regular session held on the 22nd day of October, 1910, and duly approved by said Board on said date.  
C. H. Meyer  
County Auditor of Goodhue County, Minn.

I do hereby certify that this plat is a true representation of the survey as made by me, that all the distances are correctly shown on the plat, that the monuments for guidance of future surveys, have been correctly placed on the ground as shown, that the outside boundary lines are correctly designated on the plat, that the topography of the land is correctly shown on the plat, that there are no wet places on the plat, that the size of all lots and blocks and width of avenues, streets and alleys are as indicated on the plat.

J. M. Simmons  
County Surveyor of Goodhue County, Minn.

State of Minnesota, ss.  
County of Goodhue, ss.  
On this 22nd day of October, A.D. 1910, before me personally appeared J. M. Simmons, to me known to be the person described in and who executed the foregoing certificate, and acknowledged that he executed the same as his free act and deed.

Notary Seal  
W. M. Dickey, Jr.  
Notary Public, Goodhue County, Minn.  
My commission expires Jan'y 7, 1914  
Paper paid and transferred this 22nd day of October, 1910.  
C. H. Meyer  
County Auditor.

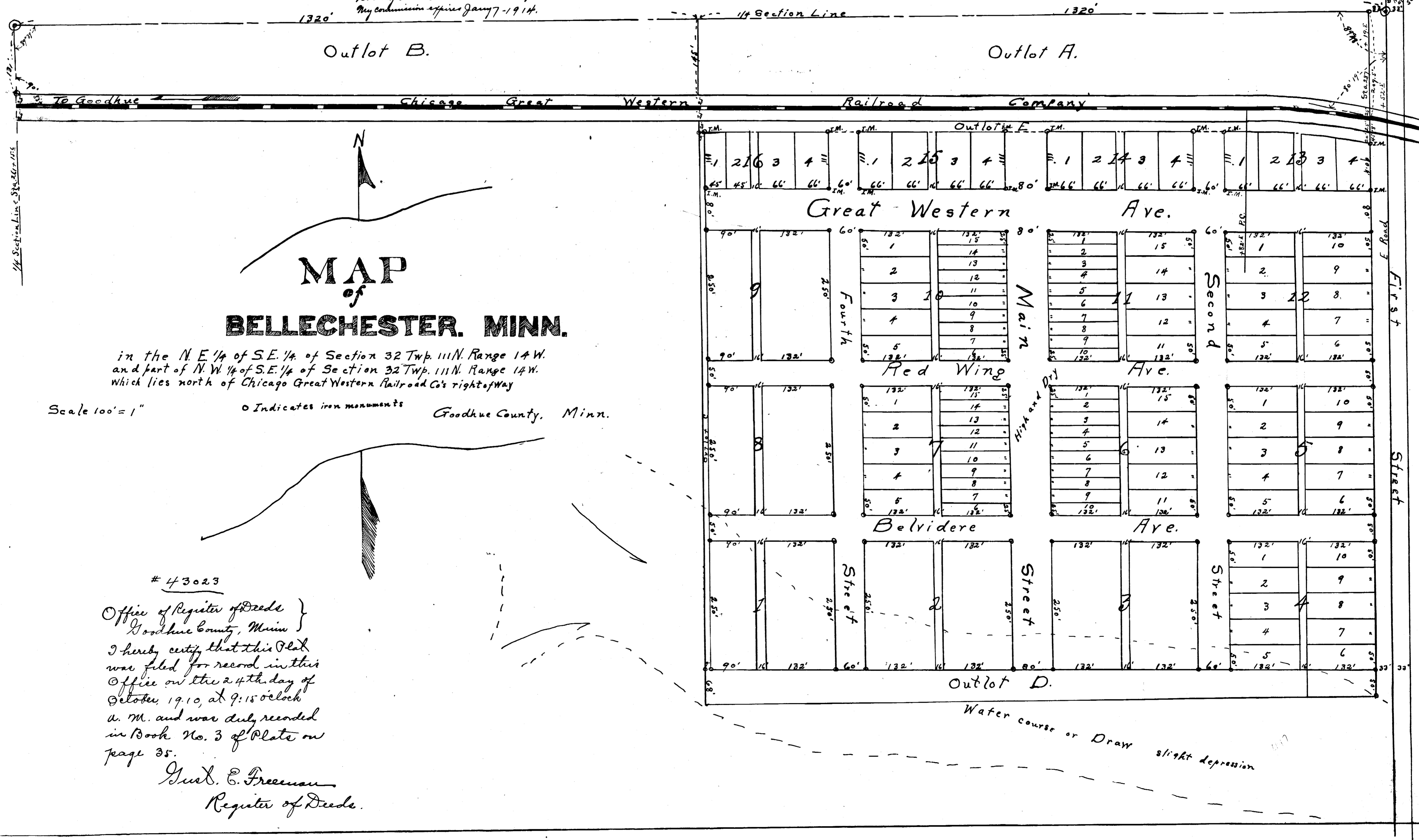
Paper for this year 1910 on the land described within paid  
Fred Beckbach  
County Treasurer

Know all men by these presents: That we the undersigned Charles A. Betelue and Carrie B. Betelue, his wife, the owner in fee simple of the following described land to-wit: - Section 32 in the North East quarter (N.E. 1/4) of the South East 1/4 (S.E. 1/4) of Section 32, Township 111 N., Range 14 W., which is the same land as described in the plat of the Chicago Great Western Railroad Company, dated and filed for record in the Office of the Registrar of Deeds, Goodhue County, Minnesota, on the 24th day of October, 1910, at 9:15 o'clock a. m. and was duly recorded in Book No. 3 of Plate on page 35.  
Do hereby certify that we have herewith set our hands and seals this 22nd day of October, A.D. 1910.

Charles A. Betelue  
Carrie B. Betelue

Signed, sealed and delivered in presence of  
W. M. Dickey, Jr.  
Chas. E. Betelue

State of Minnesota, ss.  
County of Goodhue, ss.  
On this 22nd day of October, A.D. 1910, before me a Notary Public within and for said county, personally appeared Charles A. Betelue and Carrie B. Betelue his wife, known to me to be the identical persons described in and who executed the foregoing instrument and they acknowledged to me that they executed the same for the uses and purposes therein expressed and as their free act and deed.  
W. M. Dickey, Jr.  
Notary Public, Goodhue County, Minn.  
My commission expires Jan'y 7, 1914.



# 43023  
Office of Registrar of Deeds }  
Goodhue County, Minn. }  
I hereby certify that this Plat was filed for record in this Office on the 24th day of October, 1910, at 9:15 o'clock a. m. and was duly recorded in Book No. 3 of Plate on page 35.  
Gard. E. Freeman  
Registrar of Deeds.