

PLAT

SUNNYSIDE ADDITION TO PINE ISLAND MINN.

Know ALL MEN, By these presents, that M. JOHN STUCKY, and CARRIE R. STUCKY, HIS WIFE, of PINE ISLAND Goodhue County Minnesota, OWNERS, AND PROPRIETORS, OF THE FOLLOWING DESCRIBED PROPERTY, TO WIT: THE EAST 313 1/2 FEET OF THE SOUTH 743 1/2 FEET OF AUDITORS, PLAT OF S.W. 1/4 SW 1/4 SEC 32, T. 109. N. R. 15. W. LESS THE EAST 173 1/2 FT. OF THE NORTH 66 FT. OF SAME, CONTAINING 5.08 ACRES, AND HAVE CAUSED THE SAME TO BE SURVEYED, AND PLATTED INTO LOTS, BLOCKS AND STREETS, AND TO BE KNOWN AND DESIGNATED AS SUNNYSIDE ADDITION TO PINE ISLAND MINN.

AND WE HERBY, DONATE AND DEDICATE TO THE PUBLIC USE FOREVER, ALL THE STREETS AS THEY APPEAR UPON THIS PLAT, IN WITNESS WHEREOF WE HAVE HERUNTO SET OUR HANDS AND SEALS THIS 29th DAY OF AUGUST, A.D. 1917

John Stucky
Carrie R. Stucky

STATE OF MINNESOTA } S.S.
 COUNTY OF GOODHUE }

ON THIS 29th DAY OF AUGUST, A.D. 1917, Before ME A NOTARY PUBLIC within and for said County, Personally appeared JOHN STUCKY, and CARRIE R. STUCKY HIS WIFE, TO ME KNOWN TO BE THE PERSONS DESCRIBED, WHO EXECUTED THE FOREGOING INSTRUMENT, AND ACKNOWLEDGED THAT THEY EXECUTED THE SAME AS THEIR FREE ACT, AND DEED.

L. H. Sonwell
 NOTARY PUBLIC
 My Comm. Expires Dec. 24, 1917

I, C.H. ARMSTRONG, CIVIL ENGINEER AND SURVEYOR, OF ROCHESTER MINN. DO HERBY CERTIFY THAT I, DID AT THE REQUEST OF THE PROPRIETORS, SURVEY AND PLAT, THE LAND DESCRIBED IN THE FOREGOING CERTIFICATE OF DEDICATION, INTO LOTS, BLOCKS, AND STREETS, THAT THIS PLAT IS A TRUE AND CORRECT REPRESENTATION OF SAID SURVEY AS MADE, SHOWING THE SIZE AND DIMENSIONS OF ALL LOTS AND STREETS IN FIGURES DENOTING FEET,

AT THE S.E. CORNER OF S.W. 1/4 SW 1/4 WHICH IS THE CENTER OF MAIN STREET AND COUNTY ROAD, IS A CONCRETE MONUMENT, 6" DIAM. WITH IRON BOLT IN-CENTER, THE EAST AND WEST LINES, ARE AT AN ANGLE OF 90° WITH MAIN STREET.

Witness My HAND AND SEAL THIS 23rd DAY OF AUGUST, A.D. 1917

C. H. Armstrong
 Surveyor, C.E.

Subscribed AND SWORN TO THIS 23rd DAY OF AUGUST, A.D. 1917.

George S. Harmon
 Clerk District Court
 Elmated Co. Minnesota

THIS PLAT, OF SUNNYSIDE ADDITION TO PINE ISLAND GOODHUE COUNTY, MINNESOTA, WAS ON THIS 29th DAY OF AUGUST A.D. 1917 DULY PRESENTED TO THE COUNCIL OF PINE ISLAND AND UPON RESOLUTION THE SAME WAS APPROVED.

D. C. Sheldon
 RECORDER.

Additional Certificate,
 I, C.H. Armstrong, Further certify THAT, concrete monuments, six inches square, have been placed at the following points, viz:
 SE cor. Lot No. 1,
 SW " " " 2
 NE " " " 45 AND THAT THE TOPOGRAPHY IS CORRECTLY SHOWN, AND THAT THERE ARE NO WET PLACES, PONDS, OR LAKES, UPON THIS PLAT.

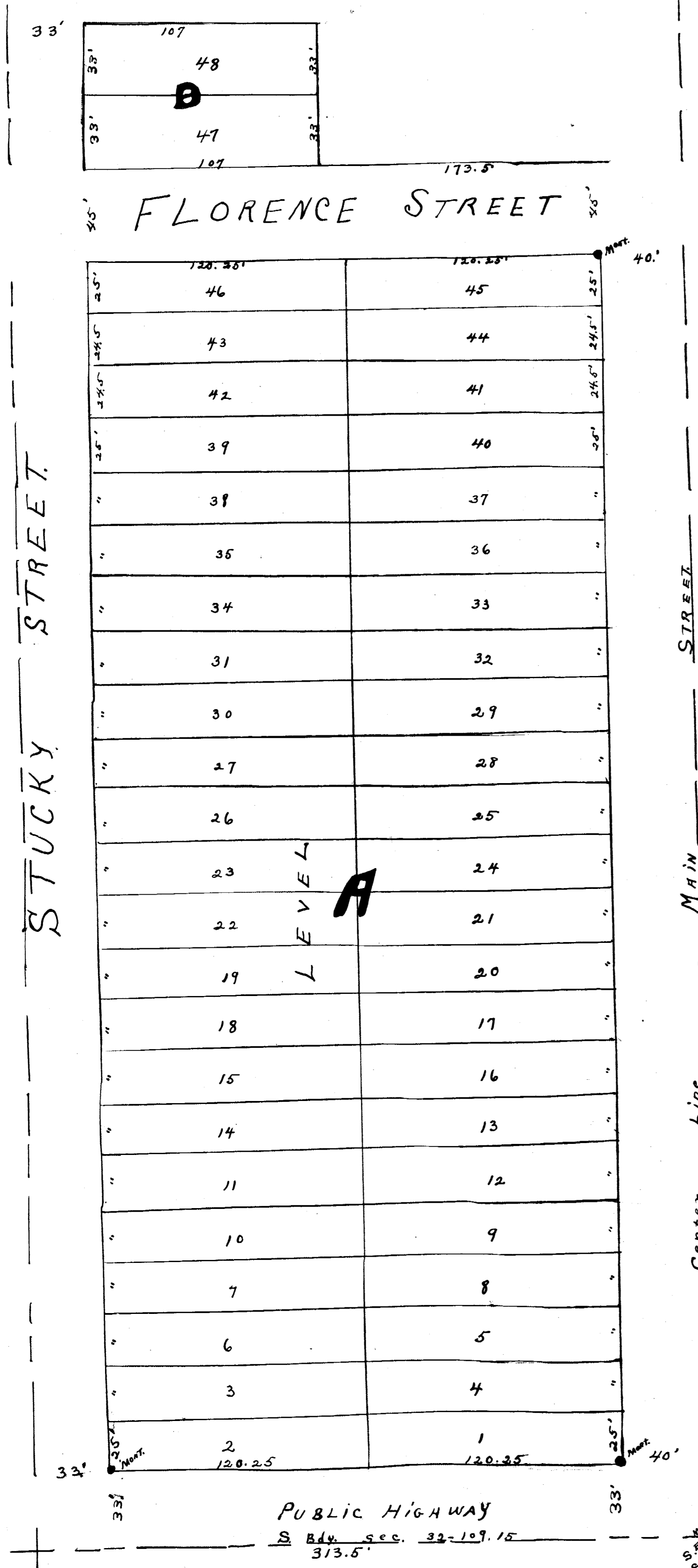
C. H. Armstrong

Taxes for the year 1917 less the landowners' within, Paid.
F. A. Scherf
 By J.H.S. County Treasurer.

Taxes paid and transfer entered this 20 day of Sept 1917
C. H. Meyer
 C.S.D. County Auditor.

57498.
 Office of Register of Deeds
 Goodhue County, Minn.
 I hereby certify that this plat was filed for record in this office September 20th, 1917 at 3 o'clock P.M. & recorded in Book No. 3 of plats on page 44.

Just. C. Freeman
 Register of Deeds.



Scale ONE INCH = 40 FEET

S. 1/4 Sec. 32, T. 109. N. R. 15. W.

