

RESOLUTION

Whereas it appears that the PLAT of Otis F. SMITH'S Subdivision of part of the NW 1/4 of NE 1/4 of Section 32, Township 113 North of Range 14 West, dated March 1, 1861, recorded May 23, 1861 in Book "1" of Plats on page 33 in the office of the Register of Deeds of Goodhue County, Minnesota, fails to identify and correctly describe the land so platted by reason of a mistake in the descriptive thereof and said plat fails to correctly show upon the face the tract of land intended or purported to be platted thereby:

NOW WHEREFORE, pursuant to the Statute in such case made and provided, The City Council of the City of Red Wing, Minnesota, does hereby resolve that the errors in said plat should be corrected and does hereby authorize the making of a new plat which shall correctly show on the face thereof and by description of the land intended to be platted, the corrected description of which is as follows, viz:

THAT PART OF THE NW 1/4 OF THE NE 1/4 OF SECTION 32, TOWNSHIP 113 NORTH OF RANGE 14 WEST IN THE CITY OF RED WING, GOODHUE COUNTY, MINNESOTA, BEGINNING AT THE NORTH EAST CORNER OF THE NW 1/4 OF NE 1/4 OF SAID SECTION 32, RUNNING THENCE WEST 7.70 CHAINS TO SPATES & CO'S OUT LOTS TO THE CITY OF RED WING THENCE SOUTH 13 DEGREES WEST TO THE SOUTH LINE OF THE NW 1/4 OF NE 1/4 OF SAID SECTION 32, THENCE EAST TO THE SOUTH EAST CORNER OF THE NW 1/4 OF NE 1/4 OF SAID SECTION, THENCE NORTH TO THE EAST AND WEST CENTER LINE OF THE NW 1/4 OF NE 1/4 OF SAID SECTION 32, THENCE WEST TO THE EASTERLY BOUNDARY LINE OF LOT 8 OF THIS PLAT, THENCE NORTH 16 DEGREES, 30 MINUTES EAST TO THE PLACE OF BEGINNING.

BE IT FURTHER RESOLVED that the City Engineer of the City of Red Wing, Minnesota, prepare such corrected plat and have the same certified by the proper officers of the City of Red Wing, and cause the same to be filed for record in the office of the Register of Deeds in the "BOOK OF PLAT PARTICIPATES" as by Statute provided.

State of Minnesota }  
County of Goodhue } SS  
City of Red Wing }

I, H.E. Nordholm, City Clerk of the City of Red Wing, Minnesota, do hereby certify that the foregoing is a true and correct copy of the resolution adopted by the City Council of the City of Red Wing, Minnesota, at their regular meeting held on May 4, 1945, as recorded on Page 105, Book 12 of Council Records. Dated at Red Wing, Minnesota June 1, 1945.

CORP. SEAL  
SEAL  
City of  
Red Wing  
Minn.

H. E. Nordholm  
H.E. NORDHOLM, City Clerk.

IN PRESENCE OF  
W. C. Christiansen  
C. H. Bentley

D. R. F. Hedlin  
Mayor City of Red Wing, Minnesota  
H. E. Nordholm  
City Clerk of Red Wing, Minnesota  
James F.ENZ  
City Engineer Red Wing, Minnesota

State of Minnesota }  
County of Goodhue }

On this 1 day of June, 1945, before me, a Notary Public, within and for said County, personally appeared R.F. HEDIN, H.E. NORDHOLM, JAMES F. ENZ, to me personally known, who being each by me duly sworn, did say that they are respectively, the MAYOR, CITY CLERK and CITY ENGINEER of Red Wing, the Municipal Corporation named in the foregoing plat and resolution, and that the seal affixed thereto is the seal of said Municipal Corporation, and that said plat was signed and sealed in behalf of said Municipal Corporation by authority of its City Council and said R.F. HEDIN, H.E. NORDHOLM, and JAMES F. ENZ, acknowledged said instrument to be the free act and deed of said Municipal Corporation.

C. H. Bentley  
C. H. BENTLEY  
Notary Public, Goodhue County, Minnesota  
My commission expires April 10th, 1949.

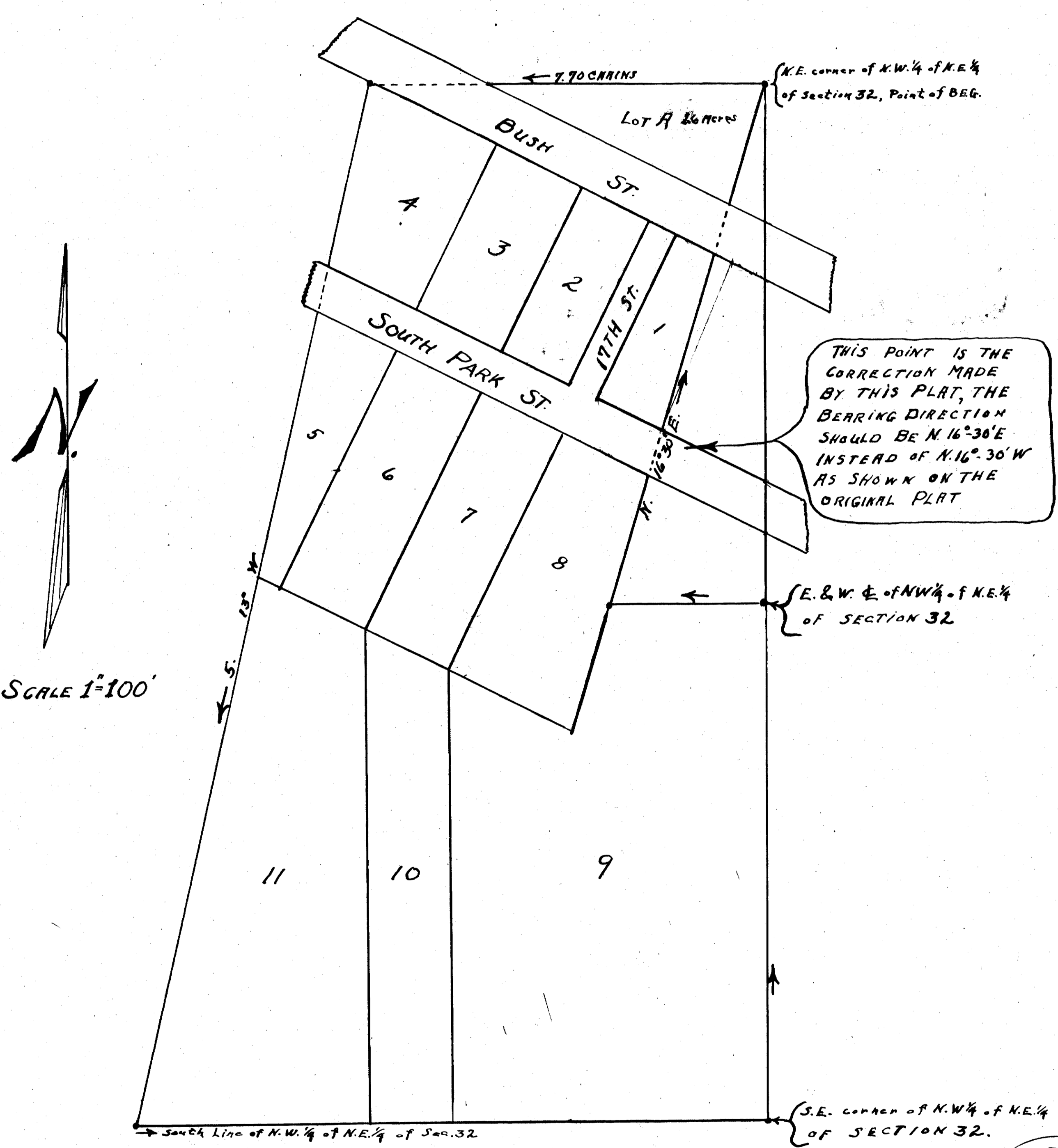
127996  
OFFICE OF REGISTER  
OF DEEDS  
Goodhue  
COUNTY, MINNESOTA

I hereby certify that the within instrument was filed in this office for record on the 5th day of June, A.D. 1945 at 4:30 o'clock P.M., and was duly recorded in Book 4 of Plats on page 10.

Ant. E. Freeman  
Register of Deeds

I hereby certify that this is a corrected replat of Otis F. Smith's Subdivision of part of the NW 1/4 of NE 1/4 of Section 32, Twp. 113 N. of R. 14 W., dated March 1, 1861, recorded May 23, 1861 in Book "1" of Plats on page 33 in the office of the Register of Deeds of Goodhue County, Minnesota. Described as follows: Beginning at the N.E. corner of the NW 1/4 of NE 1/4 of said section 32 running thence W. 7.70 chains to Spates & Co's Out lots to Red Wing, thence S. 3° W to the S. line of the NW 1/4 of NE 1/4 of said section 32, thence E. to the S.E. corner of the N.W. 1/4 of NE 1/4 of said section 32, thence N. to the E. and W. center line of the N.W. 1/4 of NE 1/4 of said section 32, thence W. to the Ely. boundary line of Lot 8 of this plat, thence N. 16°-30' E. to the place of beginning

James F.ENZ  
CITY ENGINEER



THIS REPLAT WAS REQUESTED - FRANCIS H. WATSON ATTORNEY, MAY, 4, 1945.

JAMES F. ENZ  
CITY ENGINEER  
Red Wing, Minn.

