

PINE VALLEY ADDITION
GOODHUE COUNTY, MINNESOTA

KNOW ALL MEN BY THESE PRESENTS THAT: Paul W. Lawrence Construction Company, Inc., a Minnesota corporation, owner and proprietor, Lester Longsdorf, a single man, mortgagee whose interest in the following described property is described in Document No. 221760, Book No. 147, Pages No. 180 to 182 inclusive, files of the Register of Deeds, Goodhue County, Minnesota, of the following described property situated in Goodhue County, Minnesota to wit: That part of the Northeast one-quarter (NE 1/4) of Section 6, Township 112, Range 14, described as follows: Commencing at the Northeast corner of said Northeast one-quarter (NE 1/4) of Section 6; thence South 00 degrees, 41 minutes, 45 seconds West, along the East line of said Northeast one-quarter (NE 1/4), a distance of 569.27 feet to the actual point of beginning; thence continuing South 00 degrees, 41 minutes, 45 seconds West, a distance of 732.03 feet; thence North 87 degrees, 08 minutes, 45 seconds West, a distance of 201.68 feet; thence South 01 degrees, 46 minutes, 05 seconds East, a distance of 229.14 feet; thence South 15 degrees, 01 minutes, 18 seconds East, a distance of 399.53 feet; thence South 76 degrees, 15 minutes, 59 seconds West, a distance of 150.67 feet; thence South 15 degrees, 01 minutes, 18 seconds East, a distance of 35.00 feet; thence South 74 degrees, 06 minutes, 58 seconds West, a distance of 187.88 feet; thence South 02 degrees, 33 minutes, 04 seconds West, a distance of 202.20 feet; thence South 07 degrees, 10 minutes, 50 seconds West, a distance of 128.00 feet; thence South 35 degrees, 28 minutes, 12 seconds West, a distance of 98.23 feet; thence South 81 degrees, 47 minutes, 24 seconds West, a distance of 406.16 feet; thence North 29 degrees, 51 minutes, 57 seconds West, a distance of 411.67 feet; thence North 34 degrees, 25 minutes, 24 seconds West, a distance of 173.36 feet; thence North 46 degrees, 55 minutes, 19 seconds West, a distance of 105.42 feet; thence North 60 degrees, 26 minutes, 00 seconds West, a distance of 119.57 feet; thence North 18 degrees, 53 minutes, 36 seconds East, a distance of 197.65 feet; thence North 41 degrees, 03 minutes, 07 seconds East, a distance of 482.69 feet; thence North 48 degrees, 24 minutes, 49 seconds West, a distance of 403.77 feet; thence South 41 degrees, 12 minutes, 36 seconds West, a distance of 224.64 feet; thence South 33 degrees, 59 minutes, 32 seconds West, a distance of 262.93 feet; thence South 28 degrees, 24 minutes, 19 seconds West, a distance of 111.41 feet; thence South 18 degrees, 48 minutes, 52 seconds West, a distance of 238.76 feet; thence North 68 degrees, 30 minutes, 52 seconds West, a distance of 202.04 feet; thence North 48 degrees, 15 minutes, 43 seconds West, a distance of 136.69 feet; thence North 35 degrees, 08 minutes, 37 seconds West, a distance of 557.65 feet; thence North 01 degrees, 33 minutes, 48 seconds East, a distance of 916.34 feet; thence North 31 degrees, 40 minutes, 10 seconds East, a distance of 153.31 feet; thence on a curve to the left (having a radius of 2,193.42 feet, delta angle of 09 degrees, 53 minutes, 21 seconds and a chord bearing of North 84 degrees, 54 minutes, 49 seconds West), a distance of 378.58 feet; thence North 00 degrees, 08 minutes, 30 seconds East, a distance of 50.00 feet; thence South 89 degrees, 57 minutes, 44 seconds East, a distance of 472.24 feet; thence on a curve to the right (having a radius of 2,293.42 feet, delta angle of 08 degrees, 07 minutes, 18 seconds, and a chord bearing of South 73 degrees, 54 minutes, 53 seconds East), a distance of 325.09 feet; thence North 20 degrees, 08 minutes, 46 seconds East, a distance of 95.62 feet; thence South 89 degrees, 57 minutes, 44 seconds East, a distance of 988.21 feet; thence South 00 degrees, 33 minutes, 45 seconds East, a distance of 203.96 feet; thence on a tangential curve to the left (having a radius of 351.97 feet, delta angle of 40 degrees, 48 minutes), a distance of 250.64 feet; thence South 41 degrees, 21 minutes, 45 seconds East, a distance of 30.00 feet; thence North 48 degrees, 38 minutes, 15 seconds East, a distance of 150.00 feet; thence South 41 degrees, 21 minutes, 45 seconds East, a distance of 171.96 feet; thence on a tangential curve to the left (having a radius of 201.97 feet, delta angle of 45 degrees, 47 minutes), a distance of 161.39 feet; thence South 87 degrees, 08 minutes, 45 seconds East, a distance of 332.82 feet to the point of beginning.

Have caused the same to be surveyed and platted as PINE VALLEY ADDITION, and do hereby donate and dedicate to the public for use forever the lane, road, avenue, crescent, circle, fork, public land, walkway easements, and utility and drainage easements as shown on the annexed plat.

In witness whereof, Paul W. Lawrence Construction Company, Inc., has caused these presents to be signed by its proper officer and its corporate seal to be hereunto affixed this 10 day of Sept, 1971 A.D.

In witness whereof, Lester Longsdorf, a single man, has hereunto set his hand this 13 day of Sept, 1971 A.D.

IN PRESENCE OF: SIGNED: PAUL W. LAWRENCE CONSTRUCTION COMPANY, INC.
 Witness: Charles Schultz Witness: George Blodgett Paul W. Lawrence, President
 Witness: Charles Schultz Witness: George Blodgett Lester Longsdorf, A Single Man

State of Minnesota
 County of Goodhue
 On this 10 day of Sept, 1971 A.D. before me, a notary public, within and for said county and state personally appeared Paul W. Lawrence, to me personally known, he being duly sworn did say that he is the President of Paul W. Lawrence Construction Company, Inc., a Minnesota corporation, the corporation named in the foregoing instrument; that the seal affixed to the same instrument is the corporate seal of said corporation; and that said instrument was signed and sealed in behalf of the corporation by authority of its Board of Directors; and said Paul W. Lawrence acknowledged said instrument to be the free act and deed of said corporation.

Charles Schultz
 Notary Public Goodhue County, Minnesota
 My Commission Expires Feb. 17, 1972

State of Minnesota
 County of Goodhue
 On this 13 day of Sept, 1971 A.D. before me, a notary public, within and for said county and state personally appeared Lester Longsdorf, a single man, to me personally known to be the person described herein and who executed the foregoing instrument; and he affirms and acknowledges that he executed the same as his own free act and deed.

Charles Schultz
 Notary Public Goodhue County, Minnesota
 My Commission Expires Feb. 17, 1972

I do hereby certify that I have surveyed and platted the property described on this plat as PINE VALLEY ADDITION: That this plat is a correct representation of said survey; that all distances are correctly shown on said plat in feet and decimals of a foot; that all monuments have been correctly placed in the ground as shown on this plat; that the outside boundary lines are correctly designated on the plat; and that there are no wet lands or public highways to be designated on said plat other than as shown thereon.

Surveyor C. E. Dahlgren
 C. E. Dahlgren
 Minnesota Registration No. 3073

State of Minnesota
 County of Goodhue
 Above acknowledgement subscribed and sworn to before me, a notary public, within and for said county and state on this 20 day of Sept, 1971 A.D.

Charles Schultz
 Notary Public Goodhue County, Minnesota
 My Commission Expires Jan. 18, 1977

I hereby certify that proper evidence of Title has been presented to and examined by me and I hereby approve this plat as to form and execution.

Charles Schultz
 Attorney for City of Red Wing, Minnesota

Taxes paid by tax sale or otherwise and transfer entered this 10th day of November, 1971 A.D.

County Auditor Robert Amundson

Taxes for the year _____, on this land described within are paid.

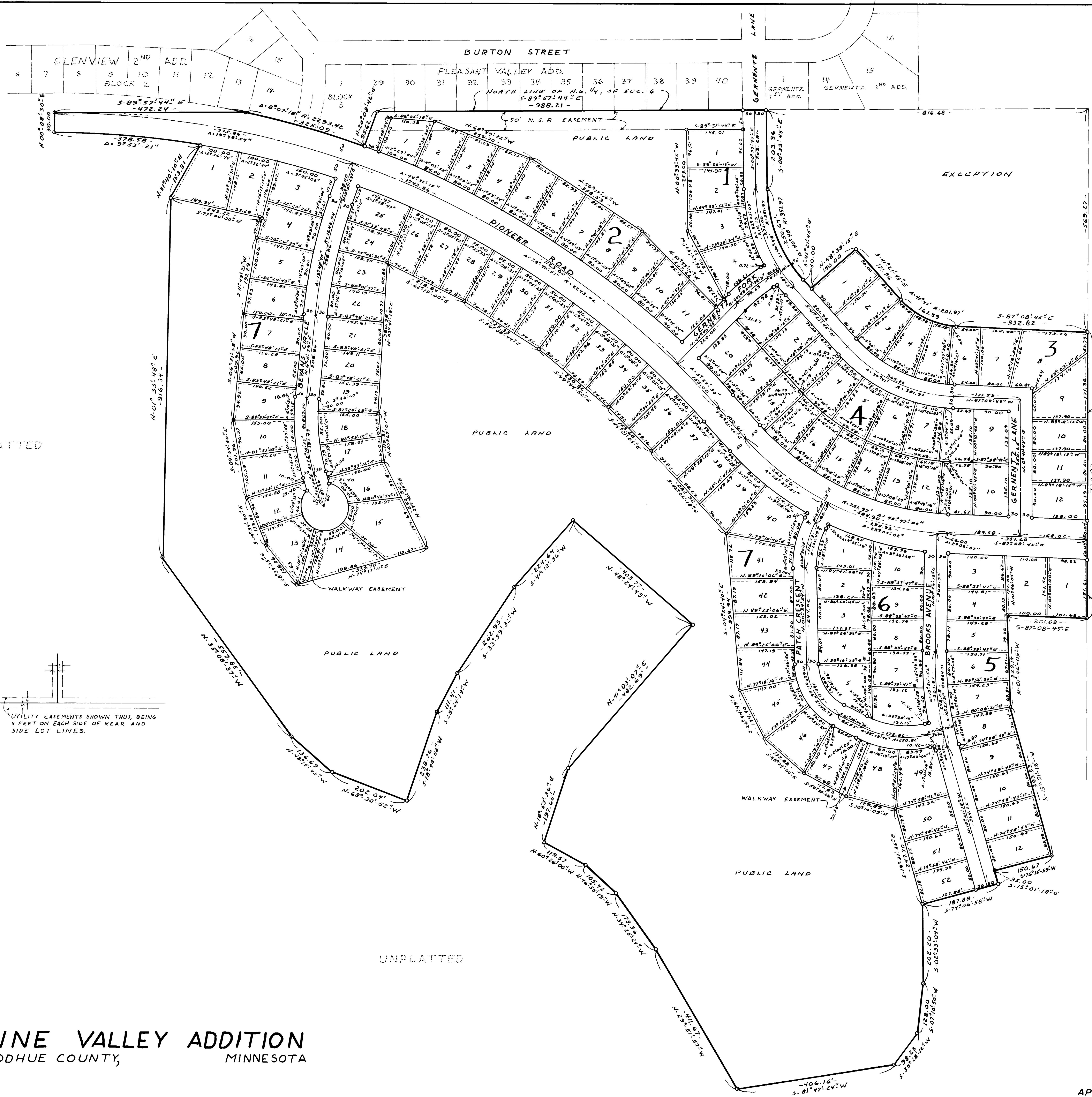
County Treasurer _____

Office of Register of Deeds
 Goodhue County, Minnesota
 I hereby certify that the within plat of Pine Valley Addition was filed in this office for record this 10th day of Sept, 1971 A.D. at 4:20 o'clock P.M. and was duly recorded in book 6 of plats, page 8.
Charles Schultz
 Register of Deeds

The plat of PINE VALLEY ADDITION was approved and accepted by the City Council of Red Wing, Minnesota at a regular meeting thereof held this 10th day of August, 1971 A.D.

CITY COUNCIL OF RED WING, MINNESOTA
Seth G. Withers
 Council President
R. B. Subasing
 City Clerk

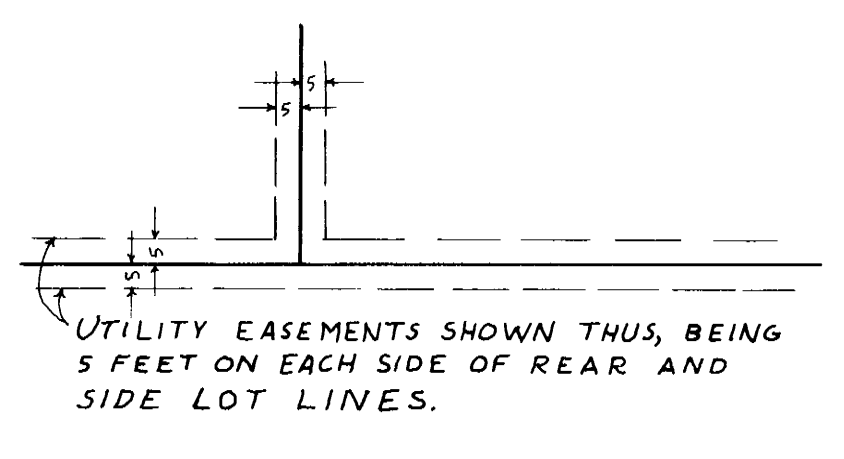
OFFICIAL



NORTH
 SCALE ONE INCH = 100 FEET
 O DENOTES IRON MONUMENT
 BEARINGS SHOWN ARE ASSUMED

UNPLATTED

UNPLATTED



PINE VALLEY ADDITION
 GOODHUE COUNTY, MINNESOTA

OFFICIAL

APACHE ENGINEERING COMPANY
 ENGINEERS & LAND SURVEYORS