

EL DORADO

KNOW ALL MEN BY THESE PRESENTS: That El Dorado Inc., a Minnesota corporation, owner and proprietor and Olmsted Federal Savings and Loan Association of Rochester, Minnesota, a United States corporation, mortgagee of the following described property situate in the County of Goodhue, State of Minnesota, to wit:

That part of the Northeast Quarter of Section 7, Township 111, Range 17, and that part of Government Lot 1, and Government Lot 6, Section 7, Township 111, Range 17, Goodhue County, Minnesota described as follows: Beginning at the northeast corner of the Northeast Quarter of said Section 7; thence South 0 degrees 08 minutes 23 seconds West, assumed bearing along the east line of said Northeast Quarter, a distance of 2604.33 feet to the south line of said Northeast Quarter; thence South 89 degrees 56 minutes 06 seconds West along said south line and the south line of said Government Lot 6, a distance of 3984.50 feet to the southwest corner of said Government Lot 6; thence North 0 degrees 03 minutes 39 seconds East along the west line of said Government Lot 6 a distance of 863.86 feet; thence North 89 degrees 42 minutes 57 seconds East a distance of 685.66 feet; thence North 0 degrees 17 minutes 30 seconds West a distance of 330.00 feet; thence South 89 degrees 42 minutes 57 seconds West a distance of 683.63 feet to said west line of said Government Lot 1; thence North 0 degrees 03 minutes 39 seconds East along said west line a distance of 770.12 feet to the northwest corner of the South Half of said Government Lot 1; thence South 89 degrees 57 minutes 27 seconds East along the north line of said South Half a distance of 1993.77 feet to the west line of the Northeast Quarter of the Northwest Quarter of the Northeast Quarter of said Section 7; thence North 0 degrees 05 minutes 07 seconds East along said west line a distance of 652.32 feet to the north line of said Northeast Quarter; thence South 89 degrees 55 minutes 18 seconds East along said north line a distance of 1994.04 feet to the point of beginning.

And First Federal Savings and Loan Association of Albert Lea, Minnesota, a United States corporation, mortgagee of the following described property situate in the County of Goodhue, Minnesota, described as follows:

Lot 23, Block 1 as shown on this plat.

Have caused the same to be surveyed and platted as EL DORADO and do hereby donate and dedicate to the public for public use forever the road, circle and easements for drainage and utility purposes as shown on the plat.

In witness whereof El Dorado Inc., a Minnesota corporation, has caused these presents to be signed by its proper officers, and its corporate seal to be hereunto affixed this 16th day of APRIL A.D., 1974.

And Olmsted Federal Savings and Loan Association of Rochester, Minnesota, a United States corporation, has caused these presents to be signed by its proper officer's and its corporate seal to be hereunto affixed this 16th day of April A.D., 1974.

And First Federal Savings and Loan Association of Albert Lea, Minnesota, a United States corporation, has caused these presents to be signed by its proper officers and its corporate seal to be hereunto affixed this 16th day of April A.D., 1974.

SIGNED: Lowell H. Tukua its President
Lowell H. Tukua

H. J. Underdahl its Secretary-Treasurer
H. J. Underdahl

Olmsted Federal Savings and Loan Association of Rochester, Minnesota

William H. Sipple its Senior Vice President
William H. Sipple

David R. Hinckley its Assistant Secretary
David R. Hinckley

First Federal Savings and Loan Association of Albert Lea, Minnesota

D. J. Foley its Pres.
John Willis its Vice Pres.

STATE OF MINNESOTA
COUNTY OF Goodhue

The foregoing instrument was acknowledged before me this 16 day of April A.D., 1974, by Lowell H. Tukua, President and H. J. Underdahl, Secretary-Treasurer of El Dorado Inc., a Minnesota corporation on behalf of said corporation.

Harold Ottum
Notary Public, Goodhue County, Minnesota
My Commission Expires May 8, 1979

STATE OF MINNESOTA
COUNTY OF Olmsted

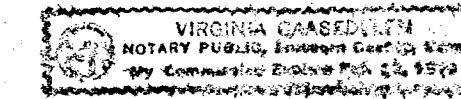
The foregoing instrument was acknowledged before me this 16th day of April A.D., 1974 by William H. Sipple, Senior Vice President and David R. Hinckley, Assistant-Secretary of Olmsted Federal Savings and Loan Association of Rochester, Minnesota, a United States corporation, on behalf of said corporation.

Gregory M. McAnis
Notary Public, Olmsted County, Minnesota
My Commission Expires December 10, 1976

STATE OF MINNESOTA
COUNTY OF Stearns

The foregoing instrument was acknowledged before me this 16th day of April A.D., 1974 by D. J. Foley, Pres. and John Willis, Vice Pres. of First Federal Savings and Loan Association of Albert Lea, Minnesota a United States corporation on behalf of said corporation.

Virginia Goodwin
Notary Public, Stearns County, Minnesota
My Commission Expires February 24, 1979



I hereby certify that I have surveyed and platted the property described on this plat as EL DORADO; that this plat is a correct representation of said survey; that all distances are correctly shown on said plat in feet and hundredths of a foot; that all monuments have been correctly placed in the ground as shown on said plat; that the outside boundary lines are designated on said plat and there are no wet lands to be designated on said plat.

Harry S. Johnson
Harry S. Johnson
Land Surveyor
Minn. Reg. No. 5065

STATE OF MINNESOTA
COUNTY OF Goodhue

The foregoing instrument was acknowledged before me this 18 day of April A.D., 1974, by Harry S. Johnson, Land Surveyor.

Harold Ottum
Notary Public, Goodhue County, Minnesota
My Commission Expires May 8, 1979

The plat of EL DORADO was approved and accepted by the Board of Commissioners, Goodhue County, Minnesota on this 3rd day of April A.D., 1974.

By: John E. Davidson Chairman
County Auditor

The plat of EL DORADO was approved and accepted by the Town Board of Leon Township, Goodhue County, Minnesota, on this 12th day of April A.D., 1974.

By: Owen A. Henke Chairman

I hereby certify that I have examined the title of this plat and hereby recommend this plat for approval.

By: Richard J. Hanna County Attorney, Goodhue County, Minnesota

I hereby certify that I have reviewed this plat and found it to be in compliance with the surveying requirements of the Sub-division Controls Ordinance of Goodhue County and Chapter 505 Minnesota Statutes.

By: Harry S. Johnson County Surveyor for Goodhue County, Minnesota

I hereby certify that all delinquent taxes or tax certificates are paid or assigned and transfer entered this 18th day of April A.D., 1974.

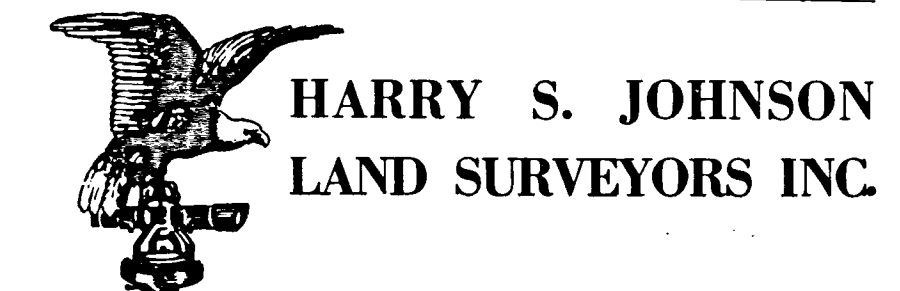
By: R. L. Tanner R. L. Tanner, Auditor, Goodhue County, Minnesota

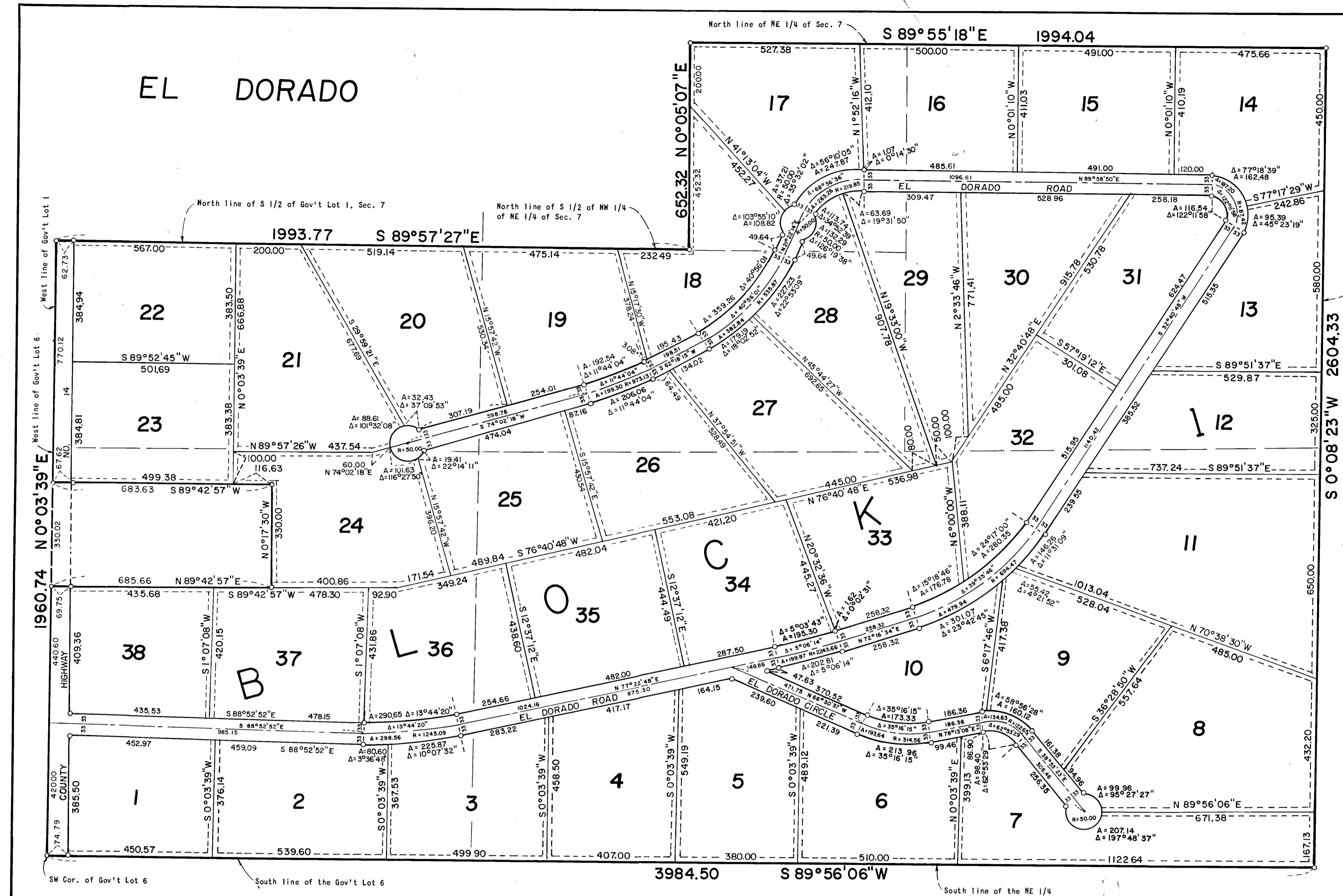
237916

I hereby certify that the within instrument was filed in this office for record this 19th day of April A.D., 1974 at 11:00 A.M. and was duly recorded in Book 7 of plats on page 2.

By: Craig A. Anderson Register of Deeds, Goodhue County, Minnesota

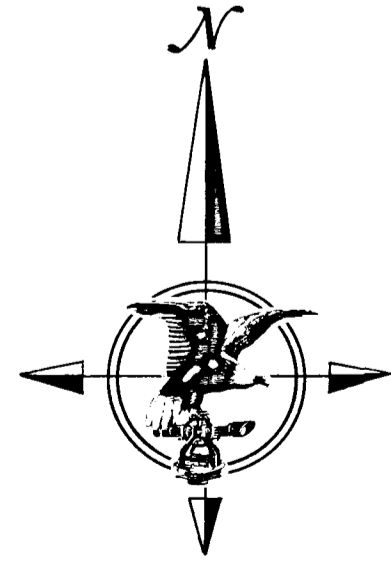
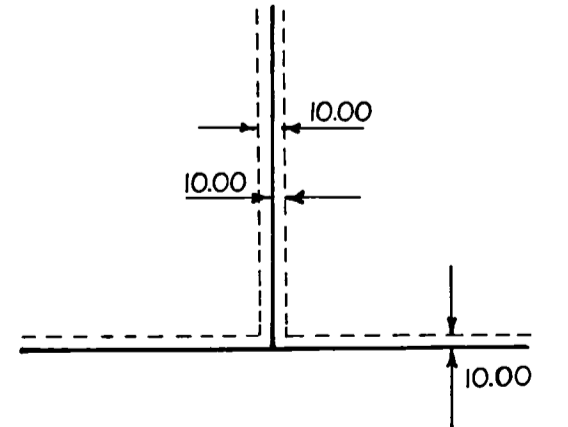
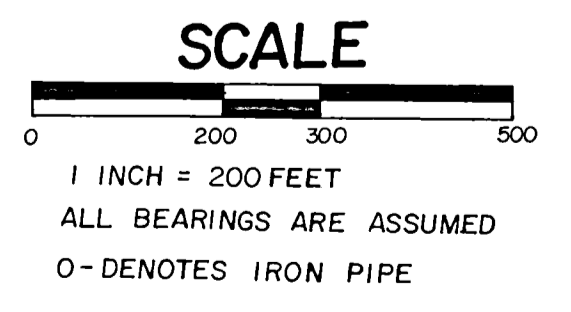
See Certificate of Correction recorded on Aug. 28, 1979 as Doc. No. 2141158





West line of Gov't Lot 6
 West line of Gov't Lot 1
 SW Cor. of Gov't Lot 6
 South line of the Gov't Lot 6

East line of NE 1/4 of Sec. 7



See Certificate of Correction recorded on Aug. 28, 1913 as Doc. No. 267158

