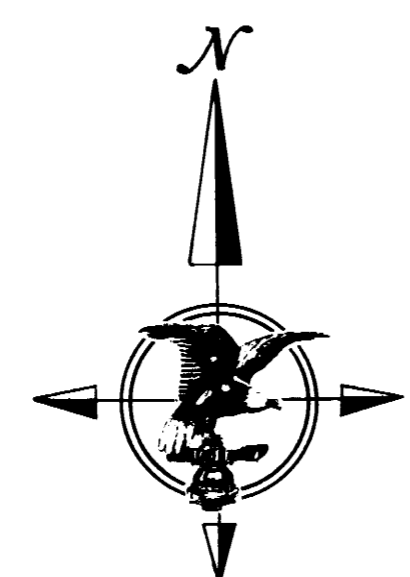
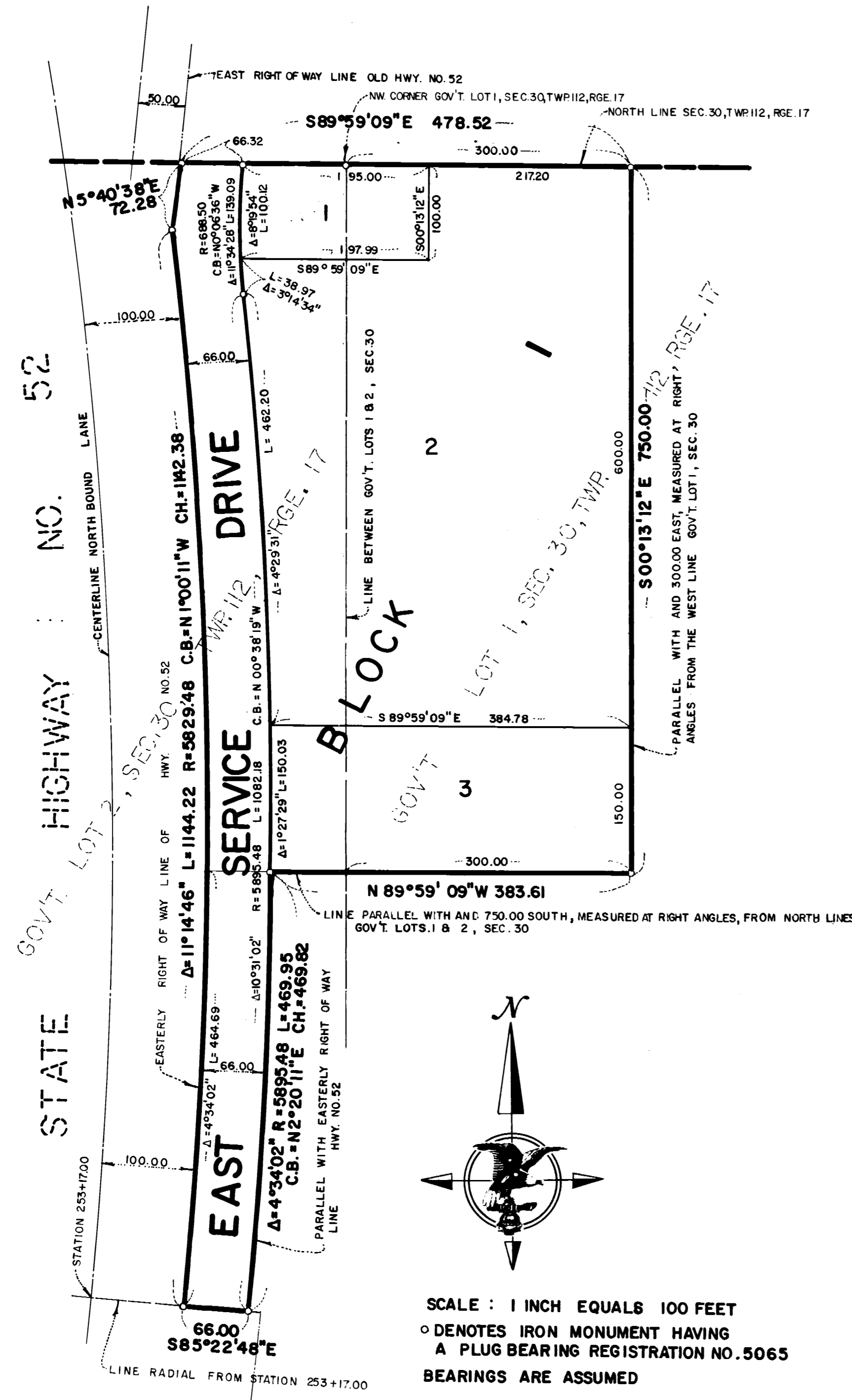


EVOLVE ADDITION



SCALE : 1 INCH EQUALS 100 FEET
 ○ DENOTES IRON MONUMENT HAVING A PLUG BEARING REGISTRATION NO. 5065
 BEARINGS ARE ASSUMED

KNOW ALL MEN BY THESE PRESENTS: That El Dorado, Incorporated, a Minnesota corporation, owner and proprietor, and Evolve, Incorporated, a Minnesota corporation, Contract for Deed purchasers, and First National Bank in Cannon Falls, a United States corporation, mortgagee, of the following described property, to wit:

The west 300.00 feet of the north 750.00 feet of Government Lot 1, Section 30, Township 112, Range 17, Goodhue County, Minnesota.

And

That part of the north 750.00 feet of Government Lot 2, Section 30, Township 112, Range 17, Goodhue County, Minnesota, which lies easterly of the easterly right of way line of State Highway Number 52.

And

That part of Government Lot 2, Section 30, Township 112, Range 17, Goodhue County, Minnesota described as follows:

Beginning at the point of intersection of the easterly right of way line of State Highway Number 52 and a line 750.00 feet south, measured at right angles and parallel with the north line of said Government Lot 2; thence southerly along said easterly right of way line a distance of 464.69 feet to a line extended radially from Station 253+17.00, according to the State Highway Stationing; thence easterly, radial to said easterly right of way line a distance of 66.00 feet; thence northerly, parallel with said easterly right of way line a distance of 469.95 feet to said line 750.00 feet south of the north line of Government Lot 2; thence west 66.00 feet to the point of beginning.

Have caused the same to be surveyed and platting as EVOLVE ADDITION and do hereby donate and dedicate to the public, for public use forever the drive as shown on the plat.

In witness thereof El Dorado, Incorporated, a Minnesota corporation, has caused these presents to be signed by its proper officers and its corporate seal to be hereunto affixed this 16 day of July 1975.

And Evolve Incorporated, a Minnesota corporation, has caused these presents to be signed by its proper officers and its corporate seal to be hereunto affixed this 16 day of July 1975.

And First National Bank of Cannon Falls, a United States corporation has caused these presents to be signed by its proper officers and its corporate seal to be hereunto affixed this 8 day of July 1975.

SIGNED:

El Dorado, Incorporated
Lowell H. Taku its President *H. J. Underdahl* its Sec. & Treas.
 Evolve, Incorporated
Charles E. Halgren its President *Lowell H. Taku* its Sec. & Treas.
 First National Bank of Cannon Falls
Paul H. Bringgald its President *Alvin M. Schwan* its Cashier

STATE OF MINNESOTA
 COUNTY OF Goodhue

The foregoing instrument was acknowledged before me this 16th day of July 1975 by Lowell H. Taku its President and H. J. Underdahl its Sec. & Treas. of El Dorado, Incorporated, a Minnesota corporation on behalf of said corporation.

Ronald Treeberg
 Notary Public, Goodhue County, Minnesota
 My Commission Expires 2-20-81

STATE OF MINNESOTA
 COUNTY OF Goodhue

The foregoing instrument was acknowledged before me this 16th day of July 1975 by Charles E. Halgren its President and Lowell H. Taku its Sec. & Treas. of Evolve, Incorporated, a Minnesota corporation on behalf of said corporation.

Ronald Treeberg
 Notary Public, Goodhue County, Minnesota
 My Commission Expires 2-20-81

STATE OF MINNESOTA
 COUNTY OF Goodhue

The foregoing instrument was acknowledged before me this 8th day of July 1975 by Paul H. Bringgald its President and Alvin M. Schwan its Cashier of First National Bank of Cannon Falls, a United States corporation, on behalf of said corporation.

Ronald Treeberg
 Notary Public, Goodhue County, Minnesota
 My Commission Expires 2-20-81

I hereby certify that I have surveyed and platted the property described on this plat as EVOLVE ADDITION, that this plat is a correct representation of said survey; that all distances are correctly shown on said plat in feet and hundredths of a foot; that all monuments have been correctly placed in the ground as shown on said plat; that the outside boundary lines are designated on said plat; and there are no wet lands to be designated on said plat.

Harry S. Johnson
 Harry S. Johnson, Land Surveyor
 Minn. Reg. No. 5065

STATE OF MINNESOTA
 COUNTY OF Goodhue

The foregoing instrument was acknowledged before me this 1 day of July 1975 by Harry S. Johnson, Land Surveyor.

W. A. Miller
 W. A. Miller, Notary Public, Goodhue County, Minn.
 My Commission Expires May 31, 1977

The plat of EVOLVE ADDITION was approved and accepted by the Town Board of Cannon Falls Township, Goodhue County, Minnesota, on this 12 day of June A.D., 1975:

By *Bruce E. Olson* its Chairman

I hereby certify that I have reviewed this plat and found it to be in compliance with the surveying requirements of Chapter 505 Minnesota Statutes.

By *Ward J. [Signature]* County Surveyor for Goodhue County

I hereby certify that all delinquent taxes or tax certificates are paid or assigned and transfer entered this 6th day of August 1975.

By *R. L. Tanner* R.L. Tanner, Auditor, Goodhue County, Minnesota

I hereby certify that the within instrument was filed in this office for record this 6th day of August 1975 at 1:45 PM and was duly recorded in Book 7 of plats on page 12; File # 148B

241000

By *Craig A. Anderson* Register of Deeds, Goodhue County, Minnesota

