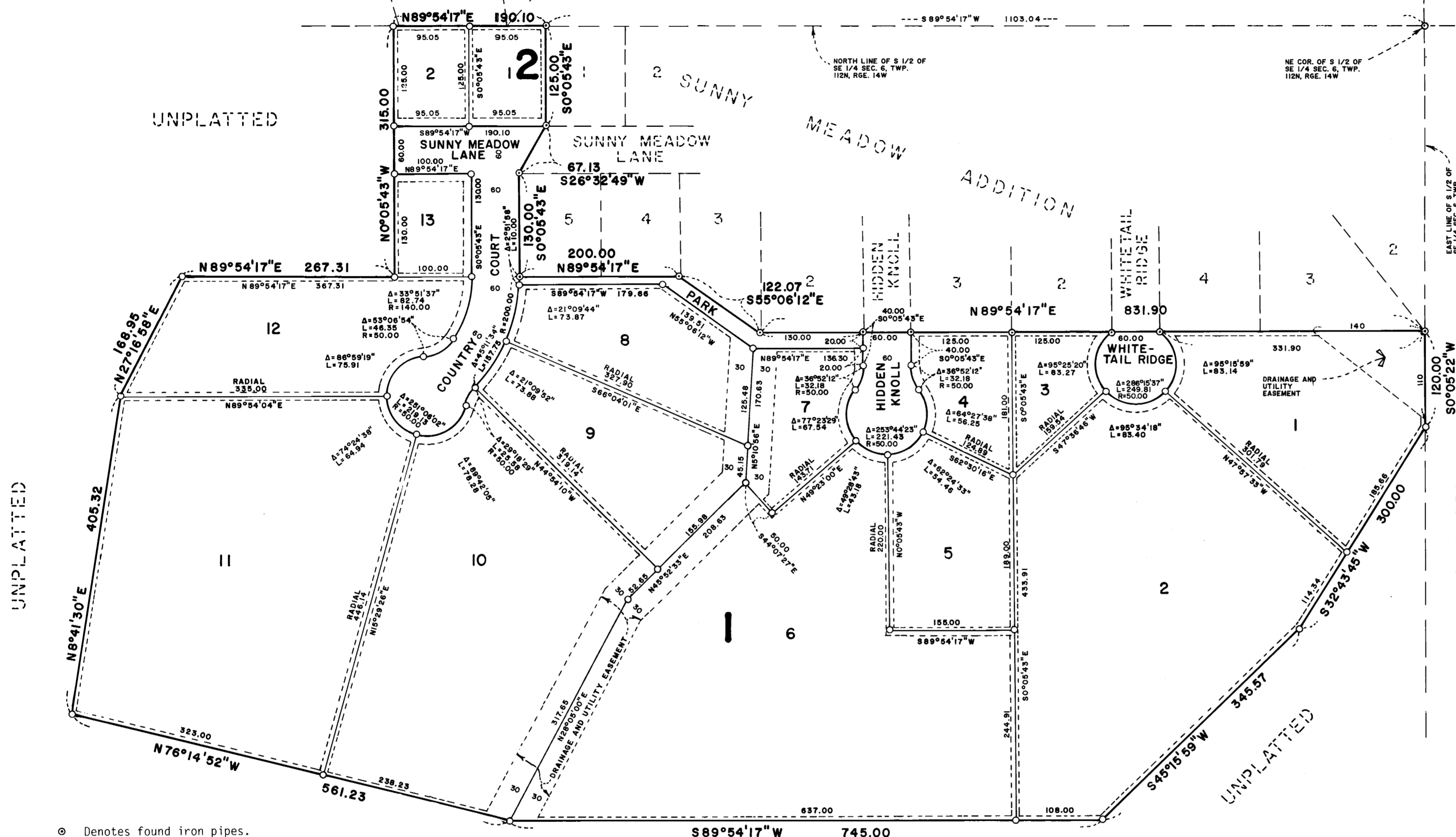


# SUNNY MEADOW SECOND ADDITION

PART OF THE SE 1/4 OF SEC. 6, TWP. 112N, RGE. 14W.

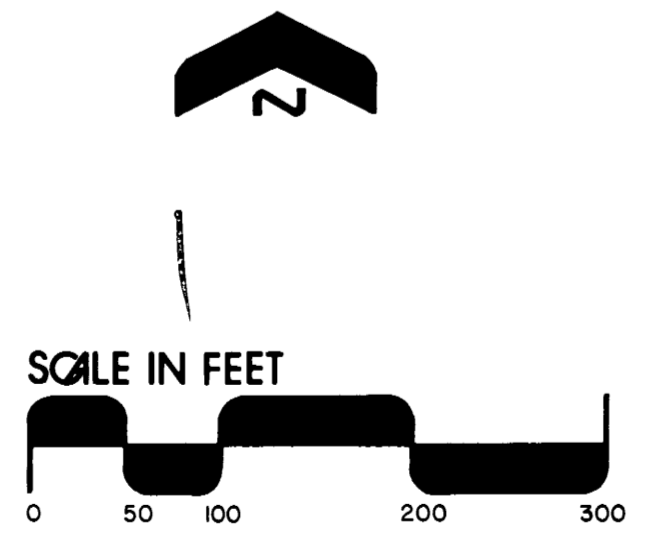
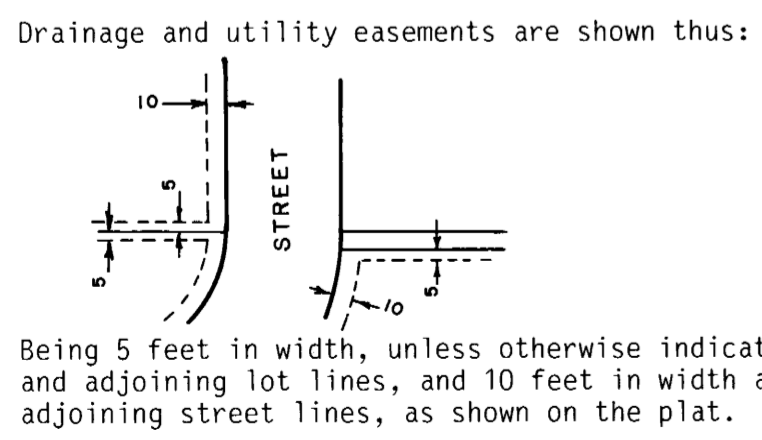
HI PARK HEIGHTS SECOND REPLAT



UNPLATTED

UNPLATTED

- Denotes found iron pipes.
  - Denotes placed 3/4" x 18" iron pipe having a plastic cap marked R.L.S. 15473, unless otherwise stated.
- Bearings are based on the assumption that the north line of the South Half of Southeast Quarter of Section 6, Township 112, Range 14, has a bearing of S89°54'17"W.



I hereby certify that all delinquent taxes and tax certificates are paid or assigned and transfer entered this 1<sup>st</sup> day of September, 1989.

By: W.A. Nulle  
County Auditor, Goodhue County, Minnesota

I hereby certify that all taxes for the year 1987 on the land described within are paid.

By: J. Allen  
County Treasurer Dated 9-18-89

I hereby certify that the within instrument was filed in this office for record this 18<sup>th</sup> day of September, 1989, at 8:00 A.M. and was duly recorded as document number 330210 file number 196 B.

By: Craig Anderson  
Craig A. Anderson  
Goodhue County Recorder

KNOW ALL MEN BY THESE PRESENTS: That Bernard F. Gadiet and Agnes G. Gadiet, husband and wife, owners and proprietors, and Gadiet Brothers Construction, a Minnesota Co-Partnership consisting of Thomas B. Gadiet, James A. Gadiet, Tracy P. Gadiet and Brian J. Gadiet, Contract for Deed Purchasers, of the following described property to wit:

That part of the South Half of the Southeast Quarter of Section 6, Township 112 North, Range 14 West, Goodhue County, Minnesota, described as follows:

Commencing at the northeast corner of said South Half of the Southeast Quarter of Section 6; thence South 89 degrees 54 minutes 17 seconds West, assumed bearing, along the north line of said South Half of the Southeast Quarter of Section 6, a distance of 1103.04 feet to the point of beginning of the land to be described; thence South 00 degrees 05 minutes 43 seconds East, a distance of 125.00 feet; thence South 26 degrees 32 minutes 49 seconds West, a distance of 67.13 feet; thence South 00 degrees 05 minutes 43 seconds East, a distance of 130.00 feet; thence North 89 degrees 54 minutes 17 seconds East, a distance of 200.00 feet; thence South 55 degrees 06 minutes 12 seconds East, a distance of 122.07 feet; thence North 89 degrees 54 minutes 17 seconds East, a distance of 831.90 feet to the east line of said South Half of the Southeast Quarter of Section 6; thence South 00 degrees 05 minutes 43 seconds West, along said east line, a distance of 120.00 feet; thence South 32 degrees 43 minutes 45 seconds West, a distance of 300.00 feet; thence South 45 degrees 15 minutes 59 seconds West, a distance of 345.57 feet; thence South 89 degrees 54 minutes 17 seconds West, a distance of 745.00 feet; thence North 76 degrees 14 minutes 52 seconds West, a distance of 561.23 feet; thence North 08 degrees 41 minutes 30 seconds East, a distance of 405.32 feet; thence North 27 degrees 16 minutes 58 seconds East, a distance of 168.95 feet; thence North 89 degrees 54 minutes 17 seconds East, a distance of 267.31 feet; thence North 00 degrees 05 minutes 43 seconds West, a distance of 315.00 feet to the north line of said South Half of the Southeast Quarter of Section 6; thence North 89 degrees 54 minutes 17 seconds East, along said north line, a distance of 190.10 feet, to the point of beginning.

Have caused the same to be surveyed and platted as SUNNY MEADOW SECOND ADDITION and do hereby donate and dedicate to the public, for public use forever the thoroughfares, cul de sacs, park and the drainage and utility easements as shown on the plat.

In witness thereof Bernard F. Gadiet and Agnes G. Gadiet, husband and wife, have hereunto set their hands and seals this 17<sup>th</sup> day of July A.D., 1989.

Also in witness thereof Gadiet Brothers Construction, a Minnesota Co-Partnership, has caused these presents to be signed by a partner of said Partnership this 17 day of July 1989 A.D., 1989.

SIGNED: Bernard F. Gadiet Bernard F. Gadiet Agnes G. Gadiet Agnes G. Gadiet  
GADIET BROTHERS CONSTRUCTION  
By Suey Gadiet a Partner

STATE OF MINNESOTA  
COUNTY OF Goodhue

The foregoing instrument was acknowledged before me this 17<sup>th</sup> day of July A.D., 1989, by Bernard F. Gadiet and Agnes G. Gadiet, husband and wife.

Kathy Seymour Johnson  
NOTARY PUBLIC - MINNESOTA  
GOODHUE COUNTY  
My Commission Expires July 16, 1991

Kathy Seymour Johnson  
Notary Public, Goodhue County, Minnesota  
My Commission Expires 7-16-91

STATE OF MINNESOTA  
COUNTY OF Goodhue

The foregoing instrument was acknowledged before me this 17<sup>th</sup> day of July A.D., 1989, by Tracy Gadiet, a partner of Gadiet Brothers Construction, a Minnesota Co-Partnership on behalf of said Partnership.

Kathy Seymour Johnson  
NOTARY PUBLIC - MINNESOTA  
GOODHUE COUNTY  
My Commission Expires July 16, 1991

Kathy Seymour Johnson  
Notary Public, Goodhue County, Minnesota  
My Commission Expires 7-16-91

I hereby certify that I have surveyed and platted the property described on this plat as SUNNY MEADOW SECOND ADDITION that this plat is a correct representation of said survey; that all distances are correctly shown on said plat in feet and hundredths of a foot; that all monuments have been correctly placed in the ground as shown on said plat; that the outside boundary lines are correctly designated, and there are no wet lands or public highways to be designated on said plat, other than as shown.

Alan K. Scofield  
Alan K. Scofield, Land Surveyor  
Minnesota Registration Number 15473

STATE OF MINNESOTA  
COUNTY OF Goodhue

The foregoing instrument was acknowledged before me this 25 day of July, 1989, by Alan K. Scofield, Minnesota Registration Number 15473.

Richard A. Olsen  
Notary Public, Goodhue County, Minnesota  
My Commission Expires April 14, 1990

Approved by the City Council of Red Wing, Minnesota, this 12<sup>th</sup> day of June, 1989.

SIGNED: B.C. Wise City Clerk Janeille M. Sigstad Mayor

I hereby certify that I have reviewed this plat and found the abstract of title or Certificate of Title and the final plat to be in compliance with the requirements of this ordinance.

By: [Signature]  
City of Red Wing Recorder Date 9/14/89

Approved by the Planning Commission of the City of Red Wing, Minnesota this 23<sup>rd</sup> day of May, 1989.

By: [Signature] Chairman

Pursuant to Chapter 389.09, laws of Minnesota, as amended in 1976, and Goodhue County Ordinance No. 2-78, this plat has been approved this 27<sup>th</sup> day of July, 1989.

[Signature]  
Goodhue County Surveyor

**JOHNSON & SCOFIELD INC.**  
LAND SURVEYORS  
1203 MAIN STREET - RED WING - MN 55066 612-388-1558  
Wabasha County Surveyors  
Wabasha County Courthouse - Wabasha - MN 55981  
612-565-3244