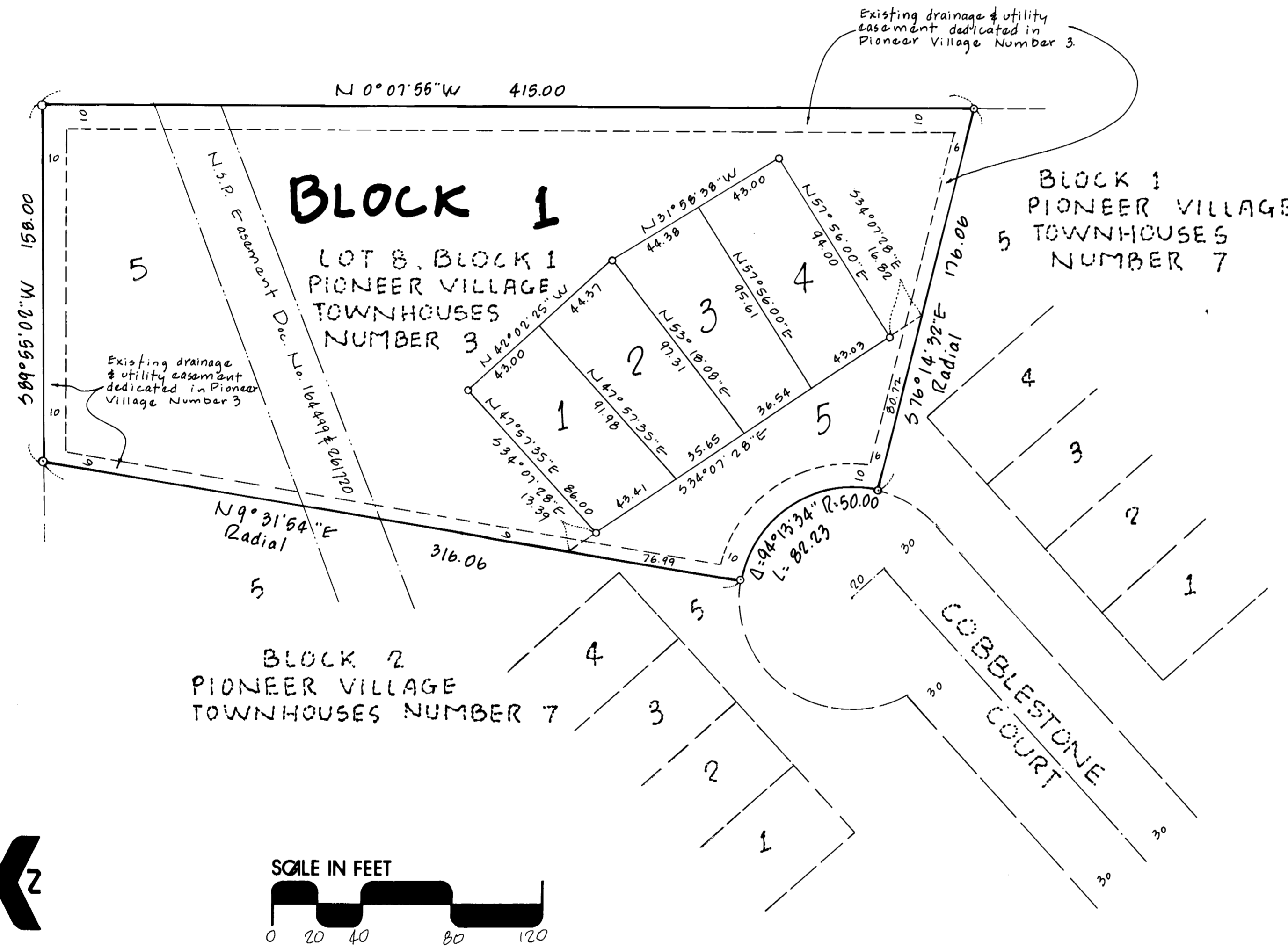


PIONEER VILLAGE TOWNHOUSES NUMBER 8

PART OF SE 1/4 OF SE 1/4 OF SEC. 36, TWP. 113N, RGE. 15W



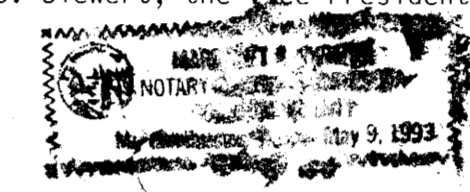
KNOW ALL MEN BY THESE PRESENTS: That Siewert Construction Company Inc., a Minnesota Corporation, owner and proprietor, of the following described property to wit:

Lot 8 in Block 1 of PIONEER VILLAGE TOWNHOUSES NUMBER 3, according to the recorded plat thereof, on file in the office of the County Recorder, Goodhue County, Minnesota.

Have caused the same to be surveyed and platted as PIONEER VILLAGE TOWNHOUSES NUMBER 8.
In witness thereof Siewert Construction Company Inc., a Minnesota Corporation, has caused these presents to be signed by its proper officers and its Corporate seal to be hereunto affixed this 7th day of MARCH A.D., 1990.

SIEWERT CONSTRUCTION COMPANY
by Neal C. Siewert Barbara J. Siewert
Neal C. Siewert, President Barbara J. Siewert, Vice President

STATE OF MINNESOTA
COUNTY OF Goodhue
The foregoing instrument was acknowledged before me this 7th day of March A.D., 1990, by Neal C. Siewert, the President and Barbara J. Siewert, the Vice President of Siewert Construction Company Inc., a Minnesota Corporation of said Corporation.



Margaret A. Lyberg
Notary Public Goodhue County, Minnesota
My Commission Expires 5/9/93

I hereby certify that I have surveyed and platted the property described on this plat as PIONEER VILLAGE TOWNHOUSES NUMBER 8; that this plat is a correct representation of said survey; that all distances are correctly shown on said plat in feet and hundredths of a foot; that all monuments have been correctly placed in the ground as shown on said plat; that the outside boundary lines are correctly designated, and there are no wet lands or public highways to be designated on said plat, other than as shown.

David A. Johnson
David A. Johnson, Land Surveyor
Minnesota Registration Number 12788

STATE OF MINNESOTA
COUNTY OF Goodhue
The foregoing instrument was acknowledged before me this 2nd day of February, 1990, by David A. Johnson, Land Surveyor.



Debra S. Scofield
Notary Public Goodhue County, Minnesota
My Commission Expires 7/2/92

Approved by the City Council of Red Wing, Minnesota, this 26th day of May, 1987
SIGNED: B. C. Will City Clerk James H. Sjogstad Mayor

I hereby certify that I have reviewed this plat and found the Abstract of Title or Certificate of Title and the final plat to be in compliance with the requirements of this ordinance.

By George C. Hoff Patricia E. Stedman
City of Red Wing 3/6/90

Approved by the Planning Commission of the City of Red Wing, Minnesota this 5th day of May, 1987
By Robyn A. Hanschildt Chairman

Pursuant to Chapter 389.09, laws of Minnesota, as amended in 1976, and Goodhue County Ordinance No. 2-78, this plat has been approved this 7th day of March, 1990

Jeffrey L. Gross
Goodhue County Surveyor

I hereby certify that all delinquent taxes and tax certificates are paid or assigned and transfer entered this 8 day of March, 1990.

By W. A. Muhl
County Auditor, Goodhue County, Minnesota

I hereby certify that all taxes for the year 1990 on the land described within are paid.

J. E. Johnson
County Treasurer Dated 2-7-90

I hereby certify that the within instrument was filed in this office for record this 8th day of MARCH, 1990, at 11:30 A.M. and was duly recorded as document number 333834 file number 199A.

Craig A. Anderson
Craig A. Anderson
Goodhue County Recorder

JOHNSON SCOFIELD INC. LAND SURVEYORS
1203 MAIN STREET-RED WING-MN 55066 612-388-1558
Wabasha County Surveyors
Wabasha County Courthouse-Wabasha-MN 55981
612-565-3244

o Denotes a placed 1 inch by 18 inch iron pipe having a plastic cap bearing Land Surveyor Registration Number 12788.
Bearings are based on the assumption that the south line of Lot 3, Block 1 of PIONEER VILLAGE has a bearing of West.