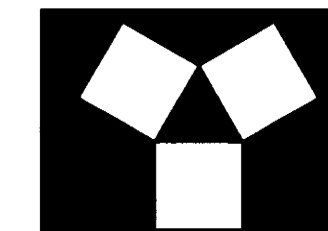


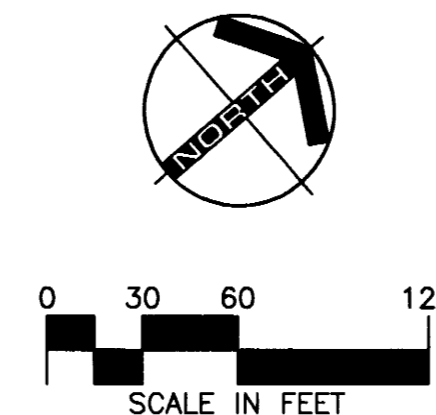
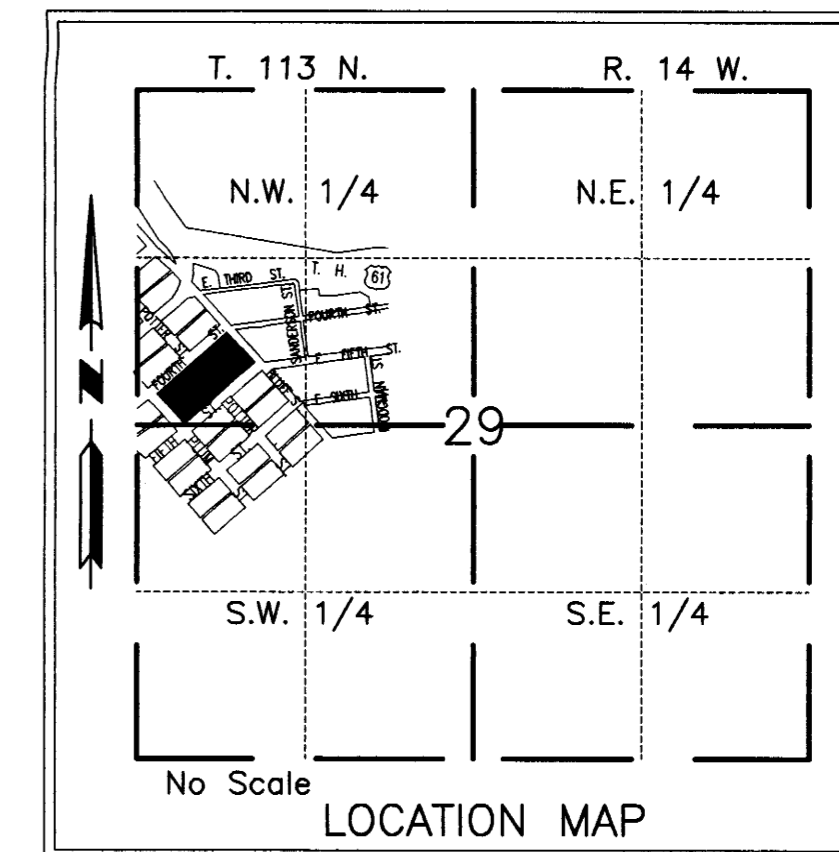
# EAST SIDE DEVELOPMENT



**YAGGY COLBY ASSOCIATES**

ENGINEERS • ARCHITECTS  
SURVEYORS • PLANNERS  
LANDSCAPE ARCHITECTS

217 THIRD AVENUE SOUTHEAST  
ROCHESTER, MINNESOTA 55904  
507-288-5464  
FAX 507-288-5059  
EMAIL INFO@YAGGY.COM



### MONUMENTS

- Set 1/2" X18" Rebars
- Set 3/4" X18" Iron Pipes
- Found Monuments (Pipe, Rod, Etc.)

All monuments set have a plastic cap stamped L.S. 22422.

### BEARINGS

Plat bearings are Minnesota State Plane Grid Azimuths measured to the right from Grid North.

U.E.=UTILITY EASEMENT

### UTILITY EASEMENT DEFINED

An unobstructed easement for the construction and maintenance of all necessary overhead, underground or surface public utilities, including rights to conduct drainage and trimming on said easement.

### COUNTY AUDITOR/TREASURER

Taxes payable in the year 1998 on the land herein described have been paid, there are no delinquent taxes and transfer has been entered this 24 day of Oct, 1998

*[Signature]*  
Goodhue County Auditor/Treasurer

### COUNTY RECORDER

Document Number 421472

I hereby certify that this instrument was filed in the Office of the County Register of Titles for record on this 27th day of October, 1998, at 2:30 o'clock P.m. and was duly recorded in Goodhue County Records. FILE No. 257A.

*[Signature]*  
Goodhue County Recorder

### COUNTY SURVEYOR

Pursuant to Chapter 389.09, Laws of Minnesota, as amended in 1976 and Goodhue County ordinance No. 2-78, this plat has been approved this 8th day of October, 1998.

*[Signature]*  
Goodhue County Surveyor

### SURVEYOR'S CERTIFICATE

I do hereby certify that I have surveyed and replatted the property described on this plat as EAST SIDE DEVELOPMENT, that this plat is a correct representation of the survey, that all distances are correctly shown on the plat in feet and hundredths of a foot, that all monuments have been correctly placed in the ground as shown, or will be correctly placed in the ground by June 1, 1999; that the outside boundary lines are correctly designated; and that there are no wetlands as defined in MS 505.02, Subd. 1, or public highways to be designated on said plat other than as shown.

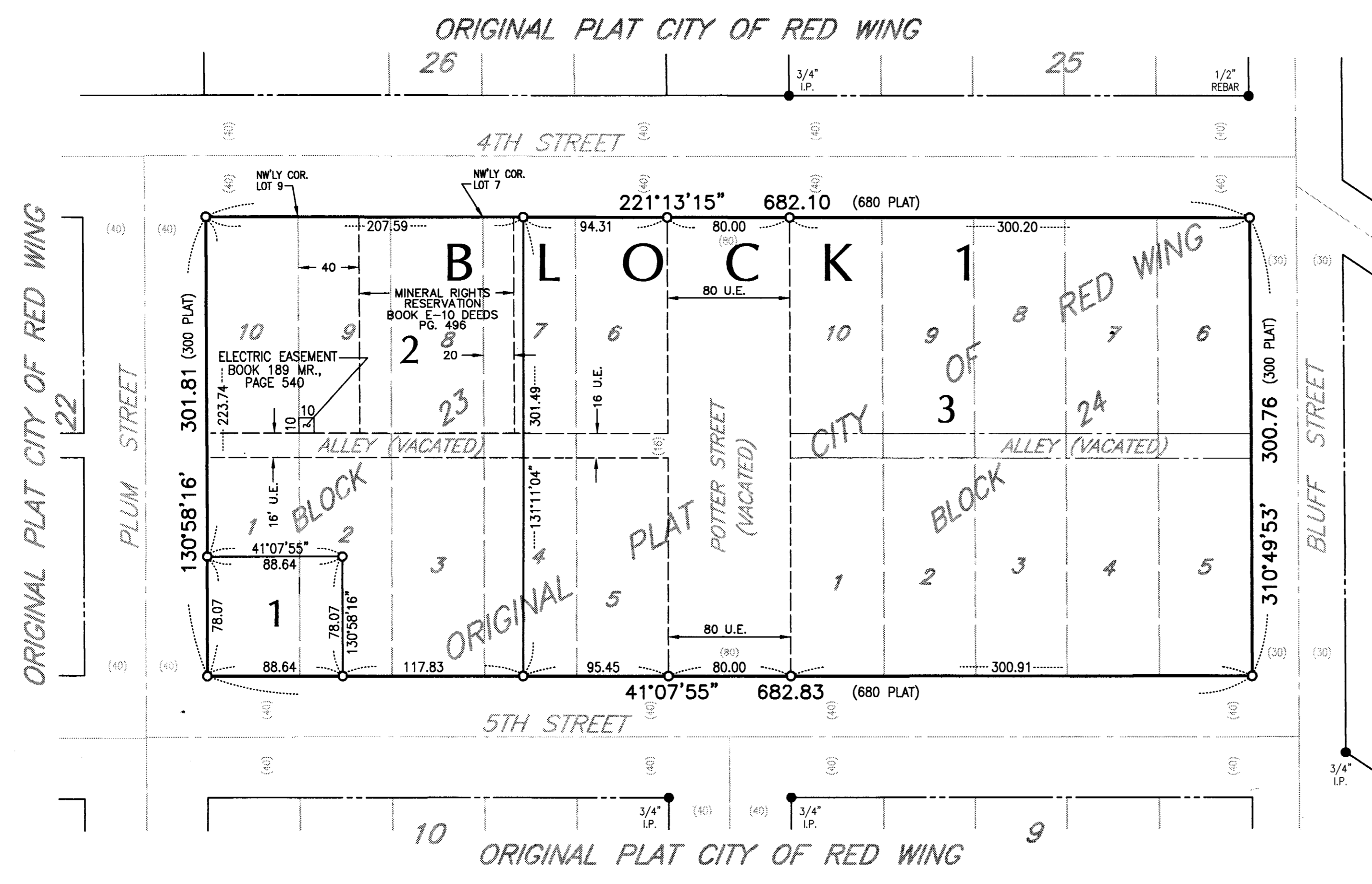
*[Signature]*  
Douglas Rude  
Minnesota L.S. No. 22422

STATE OF MINNESOTA  
COUNTY OF OLMSTED

The foregoing Surveyor's Certificate was acknowledged before me this 2nd day of October, 1998, by Douglas Rude, L.S. No. 22422.

*[Signature]*  
BARBARA S. DICKHUT  
NOTARY PUBLIC-MINNESOTA  
MY COMMISSION EXPIRES 1-31-2000

*[Signature]*  
Barbara S. Dickhut  
Notary Public, Olmsted County, MN  
My Commission Expires 1-31-2000



### INSTRUMENT OF DEDICATION

KNOW ALL MEN BY THESE PRESENTS: That Red Wing Port Authority, owners and proprietors of the following described property situated in the County of Goodhue, State of Minnesota, to wit:

### LEGAL DESCRIPTION

All of Blocks 23 and 24 of Original Plat City of Red Wing, according to the plat thereof on file in the County Recorder's Office, Goodhue County, Minnesota;  
Also, vacated Potter Street adjacent to Block 23 and 24 of said Original Plat of City of Red Wing.  
Also the vacated alley's in Blocks 23 and 24 of said Original Plat of City of Red Wing.

Have caused the same to be surveyed and replatted as EAST SIDE DEVELOPMENT and do hereby dedicate the easements, for utility and drainage purposes only, as shown on this plat.

In witness whereof said Red Wing Port Authority, has caused these presents to be signed this 5th day of October, 1998.

*[Signature]* Michael R. Tracey, President  
*[Signature]* Myron White, Executive Director

STATE OF MINNESOTA  
COUNTY OF GOODHUE

The foregoing instrument was acknowledged before me this 5th day of October, 1998 by Michael R. Tracey, President and Myron White, Executive Director, Red Wing Port Authority.

*[Signature]*  
YVONNE S. FINNEY  
NOTARY PUBLIC-MINNESOTA  
MY COMMISSION EXPIRES 1-31-2000

*[Signature]*  
Notary Public, Goodhue County, Minnesota  
My Commission Expires

### CITY APPROVAL

We do hereby certify that on the 22nd day of June, 1998, the City Council of Red Wing, Minnesota approved this plat.

*[Signature]*  
Romeo C. Cyr, Mayor

*[Signature]*  
Burton C. Will, City Clerk/Treasurer

### CITY PLANNING COMMISSION

Approved by the Planning Commission of Red Wing, Minnesota, at a meeting thereof, on the 16th day of June, 1998.

*[Signature]*  
Commission Chairman