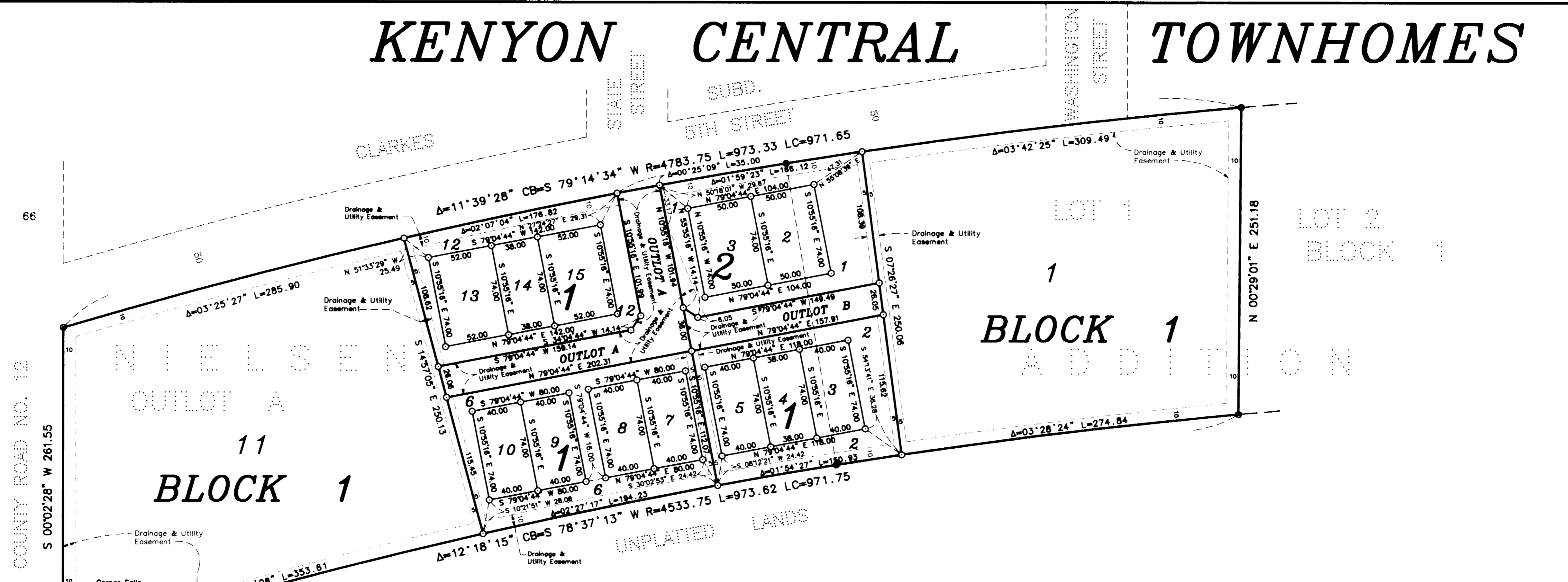


KENYON CENTRAL TOWNHOMES



KNOW ALL MEN BY THESE PRESENTS: That Southeastern Minnesota Multi-County Housing and Redevelopment Authority, a Minnesota municipal corporation, owner and proprietor, and U.S. Bank Trust National Association, a national banking association, mortgagee, of the following described property to wit:

Lot 1, Block 1 and Outlot A all in NIELSEN ADDITION, according to the plat thereof filed in the Goodhue County Recorder's Office.

Have caused the same to be surveyed and platted as KENYON CENTRAL TOWNHOMES, and do hereby dedicate to the public, for public use, the easements as shown on the plat for drainage and utility purposes only.

In witness whereof said Southeastern Minnesota Multi-County Housing and Redevelopment Authority, a Minnesota municipal corporation, has caused these presents to be signed by its proper officers this 18 day of October, 2000.

SIGNED:

SOUTHEASTERN MINNESOTA MULTI-COUNTY HOUSING AND REDEVELOPMENT AUTHORITY

Joseph P. Wheeler Joseph P. Wheeler, Executive Director
Mevin R. Brownell Mevin R. Brownell, Chair

STATE OF MINNESOTA
 COUNTY OF WABASHA

The foregoing instrument was acknowledged before me this 18 day of October, 2000, by Joseph P. Wheeler, Executive Director, and Mevin R. Brownell, Chair, of Southeastern Multi-County Housing and Redevelopment Authority.

Cheryl A. Richardson
 Cheryl A. Richardson
 Notary Public, Wabasha County, Minnesota
 My Commission Expires 01-31-2005

And in witness whereof U.S. Bank Trust National Association, a national banking association, has caused these presents to be signed by its proper officers this 18 day of October, 2000.

SIGNED:

U.S. BANK TRUST NATIONAL ASSOCIATION

Jana Mathias it's TRUST OFFICER
 and
Anita Malmgren it's TRUST OFFICER

STATE OF MINNESOTA
 COUNTY OF LANSIE

The foregoing instrument was acknowledged before me this 17th day of October, 2000, by LAURA MATHIAS it's TRUST OFFICER and ANITA MALMGREN it's TRUST OFFICER of the U.S. Bank Trust National Association, a national banking association.

Mary R. McCarthy
 Mary R. McCarthy
 Notary Public, Lansie County, Minnesota
 My Commission Expires JANUARY 31, 2005

MARY R. MCCARTHY
 Notary Public
 Minnesota
 My Commission Expires Jan. 31, 2005

I hereby certify that I have surveyed and platted the property described on this plat as KENYON CENTRAL TOWNHOMES; that this plat is a correct representation of said survey; that all distances are correctly shown on said plat in feet and hundredths of a foot; that all monuments have been correctly placed in the ground as shown on said plat; that the outside boundary lines are correctly designated on said plat; and there are no wet lands as defined in MS 505.02, Subd. 1, or public highways to be designated on said plat, other than as shown.

David A. Johnson
 David A. Johnson, Land Surveyor
 Minnesota License Number 12788

STATE OF MINNESOTA
 COUNTY OF GOODHUE

The foregoing instrument was acknowledged before me this 18th day of October, 2000, by David A. Johnson, Land Surveyor.

Beverly Lundquist
 Beverly Lundquist
 Notary Public, Goodhue County, Minnesota
 My commission expires January 31, 2005

BEVERLY LUNDOQUIST
 NOTARY PUBLIC - MINNESOTA
 My Commission Expires Jan. 31, 2005

Pursuant to Chapter 389.09, laws of Minnesota and Goodhue County Ordinance No. 2-78, this plat has been approved this 19th day of October, 2000.

By *Lisa M. Skipton*
 Lisa M. Skipton
 Goodhue County Surveyor

Approved by the Planning Commission of Kenyon, Minnesota, this 18th day of October, 2000.

Signed *Judy Furek* Chairman
 Signed *Marian Deschield* Secretary

Approved by the City Council of Kenyon, Minnesota, this 18th day of October, 2000.

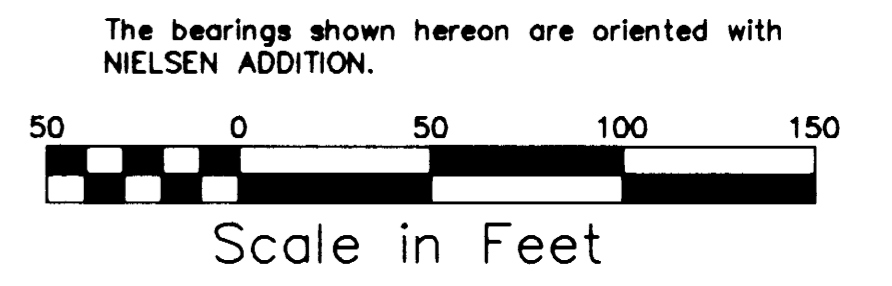
Signed *James E. Shankens* Mayor
 Signed *Tom Boyer* City Clerk

I hereby certify the taxes payable in the year 2000 on the land herein described has been paid, there are no delinquent taxes and transfer has been entered this 18th day of October, 2000.

By *Jesse*
 Jesse
 Goodhue County Auditor/Treasurer
 Deputy
 Date 10/19/00

I hereby certify that the within instrument was filed in this office for record this 19th day of October, 2000, at 11:00 o'clock A. m. and was duly recorded as document number 239 A.

By *Sandra K. Tuttle* by *S. Halen*
 Sandra K. Tuttle by S. Halen
 Goodhue County Recorder



JOHNSON & SCOFIELD INC.
LAND SURVEYORS
 1203 MAIN ST.-RED WING-MN 55066 (651) 388-1558
 WABASHA COUNTY SURVEYOR-WABASHA COUNTY COURTHOUSE
 WABASHA-MN 55981 (651) 565-3244