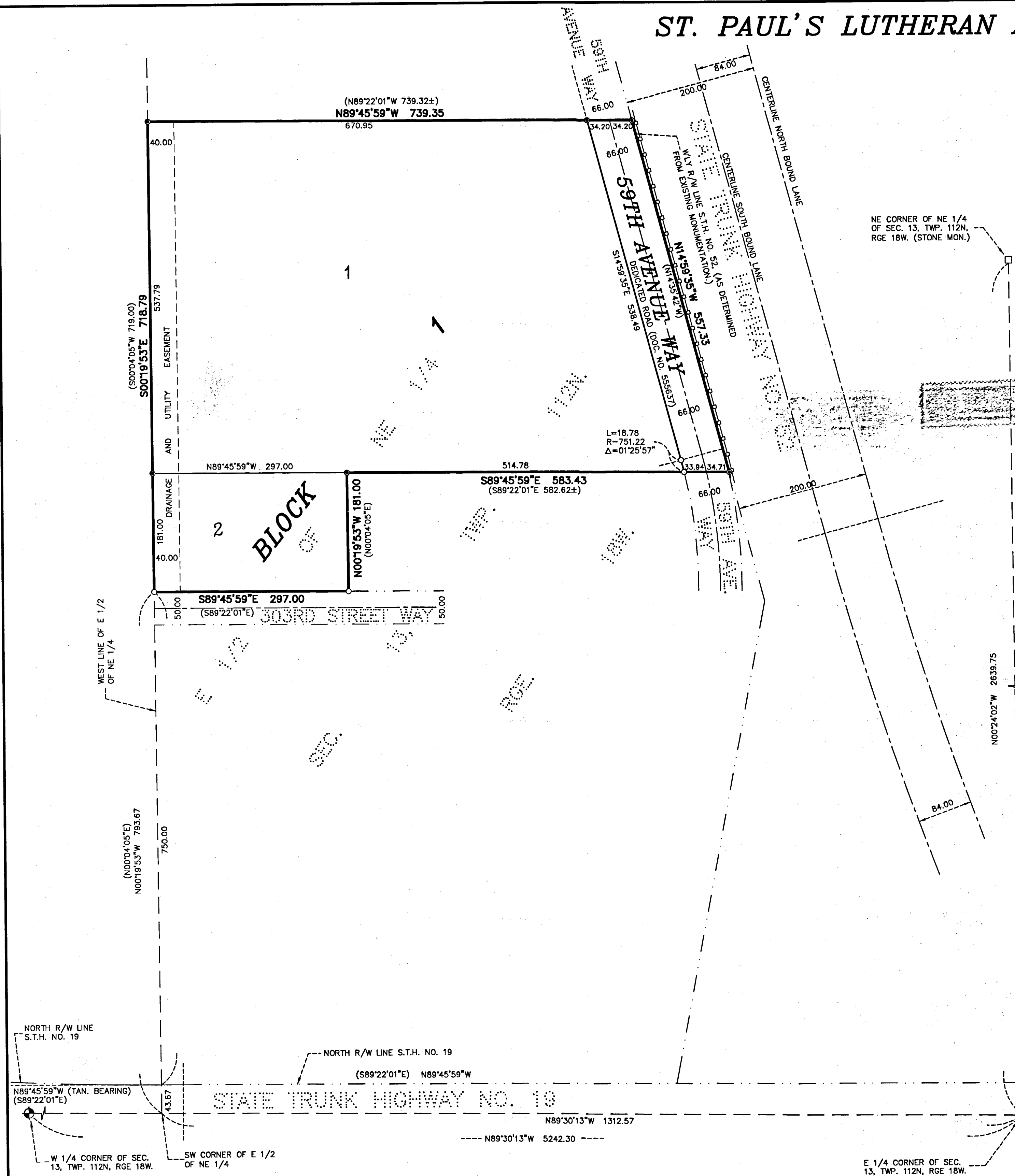


ST. PAUL'S LUTHERAN ADDITION



KNOW ALL PERSONS BY THESE PRESENTS: That ST. PAUL'S EVANGELICAL LUTHERAN CHURCH OF CANNON FALLS, a Minnesota religious corporation, owners and proprietors and THRIVENT FINANCIAL FOR LUTHERANS, a Wisconsin corporation, mortgagee of the following described property to wit:

That part of the East Half of the Northeast Quarter of Section 13, Township 112, Range 18, Goodhue County, Minnesota, described as follows: Commencing at the southwest corner of said East Half of the Northeast Quarter; thence North 0 degrees 04 minutes 05 seconds East (assumed bearing) along the west line thereof a distance of 793.67 feet to the point of beginning (said point also being 750.00 feet north of the north right-of-way of S.T.H. No. 19); thence South 89 degrees 22 minutes 01 second East, parallel with the tangent line of S.T.H. No. 19 as it goes through said East Half of the Northeast Quarter a distance of 297.00 feet; thence North 0 degrees 04 minutes 05 seconds East, parallel with said west line of the East Half of the Northeast Quarter a distance of 181.00 feet; thence South 89 degrees 22 minutes 01 second East, parallel with said tangent line of S.T.H. No. 19 a distance of 582.62 feet, more or less, to the westerly right-of-way of S.T.H. No. 52; thence North 14 degrees 35 minutes 42 seconds West along said westerly right-of-way a distance of 557.33 feet; thence North 89 degrees 22 minutes 01 second West, parallel with said tangent line of S.T.H. No. 19 a distance of 739.32 feet, more or less, to said west line of the East Half of the Northeast Quarter, thence South 0 degrees 04 minutes 05 seconds West along said west line a distance of 719.00 feet to the point of beginning.

Have caused the same to be surveyed and platted as ST. PAUL'S LUTHERAN ADDITION and do hereby dedicate to the public for public use forever the public way, and also dedicate the drainage and utility easement, as shown on the plat, for drainage and utility purposes only.

In witness whereof said ST. PAUL'S EVANGELICAL LUTHERAN CHURCH OF CANNON FALLS, a Minnesota religious corporation, has caused these presents to be signed by its proper officers this 16th day of August, 2019, by Karl M. Schmidt its President and Donna Marie Howard its Secretary.

STATE OF Minnesota
 COUNTY OF Goodhue

The foregoing instrument was acknowledged before me this 16th day of August, 2019, by Karl M. Schmidt its President and Donna Marie Howard its Secretary of ST. PAUL'S EVANGELICAL LUTHERAN CHURCH OF CANNON FALLS, a Minnesota religious corporation, on behalf of said corporation.

Donna Marie Howard
 Notary Public Goodhue County, Minnesota
 My Commission Expires June 30, 2021

In witness whereof said THRIVENT FINANCIAL FOR LUTHERANS, a Wisconsin corporation, has caused these presents to be signed by its proper officers this 29th day of August, 2019, by Mea Spangler its Assistant Vice President and Fred P. Johnson its Assistant Vice President.

STATE OF Minnesota
 COUNTY OF Goodhue

The foregoing instrument was acknowledged before me this 29th day of August, 2019, by Mea Spangler its Assistant Vice President and Fred P. Johnson its Assistant Vice President of THRIVENT FINANCIAL FOR LUTHERANS, a Wisconsin corporation, on behalf of said corporation.

Ben Wirth
 Notary Public Goodhue County, Minnesota
 My Commission Expires June 31, 2021

I hereby certify:
 That I have surveyed or directly supervised the survey of the property described on this plat; that I have prepared or directly supervised the preparation of this plat as ST. PAUL'S LUTHERAN ADDITION; that this plat is a correct representation of the boundary survey; that all mathematical data and labels are correctly designated on the plat; that all monuments depicted on the plat have been correctly set; that as of the date of this certification, all water boundaries and wetlands, as defined in Minnesota Statutes 505.01, subd. 3, are shown and labeled on the plat; and that all public ways are shown and labeled on the plat.

Dated this 5th day of August, 2019.
Alan K. Scofield
 Alan K. Scofield, Land Surveyor
 Minnesota License Number 15473.

STATE OF MINNESOTA
 COUNTY OF GOODHUE

The foregoing instrument was acknowledged before me this 5th day of August, 2019, by Alan K. Scofield, Land Surveyor.

Katie Lynn Frazer
 Notary Public Goodhue County, Minnesota
 My Commission Expires January 31, 2021.

Approved by the County Board of Commissioners of Goodhue County, Minnesota, at their August 13, 2019 County Board meeting.

SIGNED: Bob Adams Attest: Scott Olmstead
 Chairman County Administrator

Approved by the Stanton Township Board, this 20 day of August, 2019.

Signed: KRB
 Chairman

Taxes payable in the year 2019 on the land herein described have been paid, there are no delinquent taxes and transfer has been entered this 3rd day of September, 2019.

BJ Anderson
 Goodhue County Auditor/Treasurer
 By W. W. W. Deputy

Pursuant to Chapter 389.09, laws of Minnesota, and Goodhue County Ordinance No. 2-78, this plat has been approved this 3rd day of September, 2019.

Colleen
 Goodhue County Surveyor

I hereby certify that proper evidence of title has been presented to and examined by me and I hereby approve this plat as to form and execution.

Stephanie
 Attorney for Goodhue County

I hereby certify that the within instrument was filed in this office for record this 3rd day of September, 2019 at 4:15 o'clock P.M. and was duly recorded as document number 657614 file number _____.

Colleen
 Goodhue County Recorder

JOHNSON & SCOFIELD INC.
 SURVEYING AND ENGINEERING
 1205 MAIN ST. - RED WING - MN 55066 (651) 888-1568
 626 JEFFERSON AVENUE
 WABASHA - MN 55981 (651) 685-3244

SECTION 13, TOWNSHIP 112, RANGE 18

SITE MAP (NO SCALE)

- DENOTES RESTRICTED ACCESS CONTROLLED BY THE STATE OF MINNESOTA. DOC. NO. 210779.
- DENOTES A PLACED 1" BY 18" IRON PIPE HAVING A PLASTIC CAP BEARING LAND SURVEYOR LICENSE NO. 15473.
- ⊙ DENOTES FOUND IRON MONUMENT.
- ⊙ DENOTES FOUND COUNTY MONUMENT.
- ⊙ DENOTES RECORD BEARING AND DISTANCE.