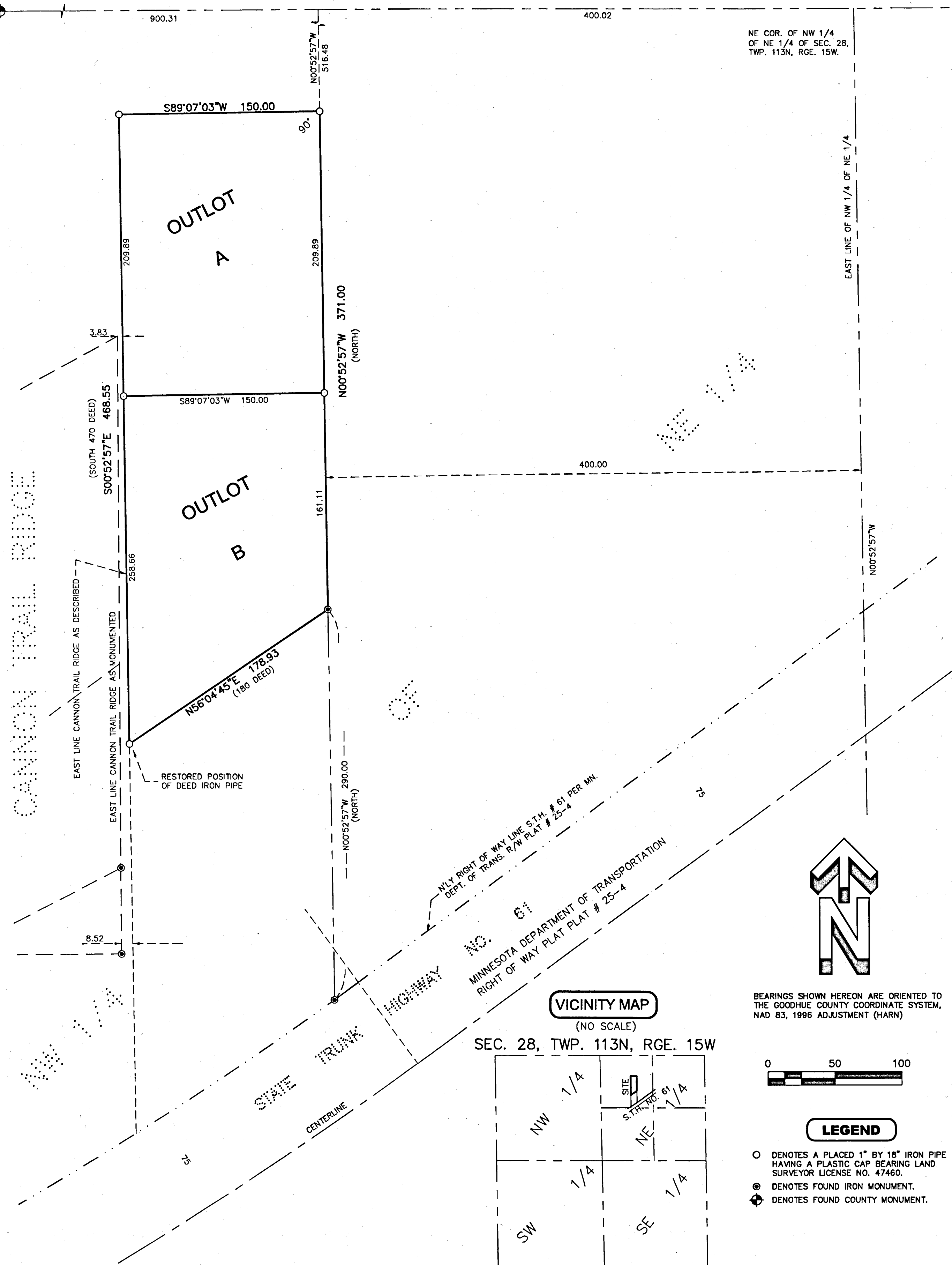


# WOLPERS ADDITION

NW COR. OF NE 1/4 OF SEC. 28, TWP. 113N, RGE. 15W.

N89°45'01"E 2600.67

NE COR. OF NE 1/4 OF SEC. 28, TWP. 113N, RGE. 15W.



KNOW ALL PERSONS BY THESE PRESENTS: That Goodhue County Guardian and Conservator Services, Inc., a Minnesota Corporation, as Conservator of the Arliss Wolpers Estate, owner of the following described property.

Abstract property:

All that part of the Northwest quarter of the Northeast quarter (NW1/4 of NE1/4) of Section 28, Township 113 North, Range 15 West in Goodhue County, and State of Minnesota described as follows: From the intersection of a line run parallel with and distant 400 feet west of the east line of said Northwest quarter of Northeast quarter (NW1/4 of NE1/4) with the Northerly right of way line of State Trunk Highway No. 61, run North 290 feet to an iron pipe for the place of beginning of tract here to be conveyed, thence run north 371 feet to an iron pipe, thence run West at right angles to said last described course for 150 feet, thence South 470 feet to an iron pipe, thence run northeasterly 180 feet to the place of beginning.

Have caused the same to be surveyed and platted as WOLPERS ADDITION.

In witness whereof said Goodhue County Guardian and Conservator Services, Inc., a Minnesota Corporation has caused these presents to be signed by its proper officer this 26<sup>th</sup> day of November, 2019

Signed: Goodhue County Guardian and Conservator Services, Inc., a Minnesota Corporation.

by Richard D. Gorman its President.

STATE OF MINNESOTA  
COUNTY OF GOODHUE

This instrument was acknowledge before me on this 26<sup>th</sup> day of November, 2019, by Richard D. Gorman President of Goodhue County Guardian and Conservator Services, Inc., a Minnesota Corporation.

Julian N. Kriger  
Notary Public Goodhue County, Minnesota  
My commission expires January 31, 2025

I hereby certify that I have surveyed or directly supervised the survey of the property described on this plat; that I prepared or directly supervised the preparation of this plat as WOLPERS ADDITION; that this plat is a correct representation of the boundary survey; that all mathematical data and labels are correctly designated on the plat; that all monuments depicted on the plat have been correctly set; that as of the date of this certificate, all water boundaries and wetlands, as defined in Minnesota Statutes 505.01, Subd. 3, are shown and labeled on the plat; and that all public ways are shown and labeled on the plat.

Dated this 26<sup>th</sup> day of November, 2019  
Marcus S. Johnson  
Marcus S. Johnson, Professional Land Surveyor  
Minnesota License Number 47460

STATE OF MINNESOTA  
COUNTY OF GOODHUE

This instrument was acknowledged before me on this 27<sup>th</sup> day of November, 2019, by Marcus S. Johnson, Professional Land Surveyor.

Moti Fajin  
Notary Public Goodhue County, Minnesota  
My Commission Expires January 31, 2021

This plat of WOLPERS ADDITION was approved and accepted by the City Council of the City of Red Wing, Minnesota at a regular meeting thereof held this 25<sup>th</sup> day of November, 2019, and said plat is in compliance with the provisions of Minnesota Statutes, Section 505.03, Subd. 2.

City Council, City of Red Wing, Minnesota  
By: Jeri Swanson  
City Clerk

By: Sean Mc...  
Mayor

Taxes payable in the year 2019 on the land herein described have been paid, there are no delinquent taxes and transfer has been entered this 2<sup>nd</sup> day of December, 2019.

By: BT Anderson  
Goodhue County Auditor/Treasurer

By: ...  
Deputy

Pursuant to Chapter 389.09, laws of Minnesota, and Goodhue County Ordinance No. 2-78, this plat has been approved this 2<sup>nd</sup> day of December, 2019.

By: Lisa M. Hanni  
Lisa M. Hanni, Goodhue County Surveyor

I hereby certify that the within instrument was filed in this office for record this 2<sup>nd</sup> day of December, 2019 at 3:31p and was duly recorded as document number 160008.

By: Lisa M. Hanni  
Goodhue County Recorder

**JOHNSON & SCOFIELD INC.**  
**SURVEYING AND ENGINEERING**  
 1203 MAIN ST.-RED WING-MN 55066 (651) 388-1558  
 628 JEFFERSON AVENUE  
 WABASHA-MN 55981 (651) 665-3244