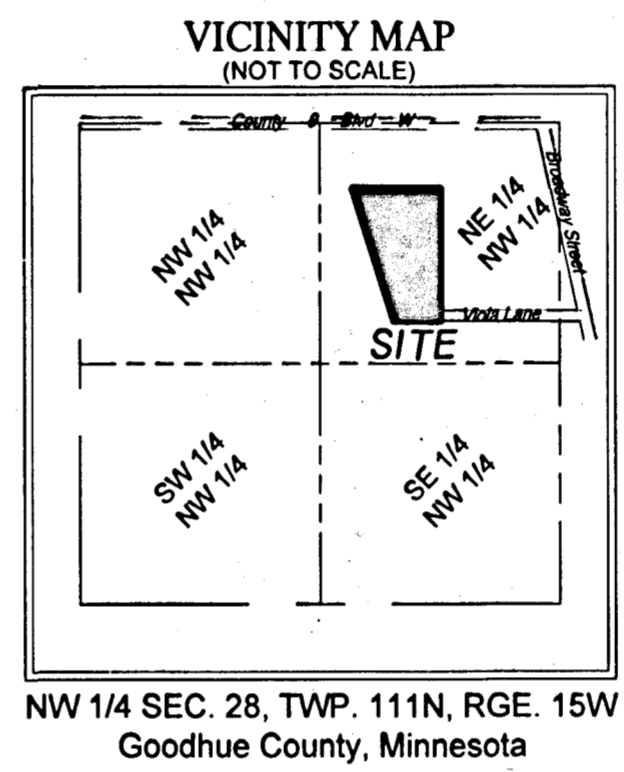
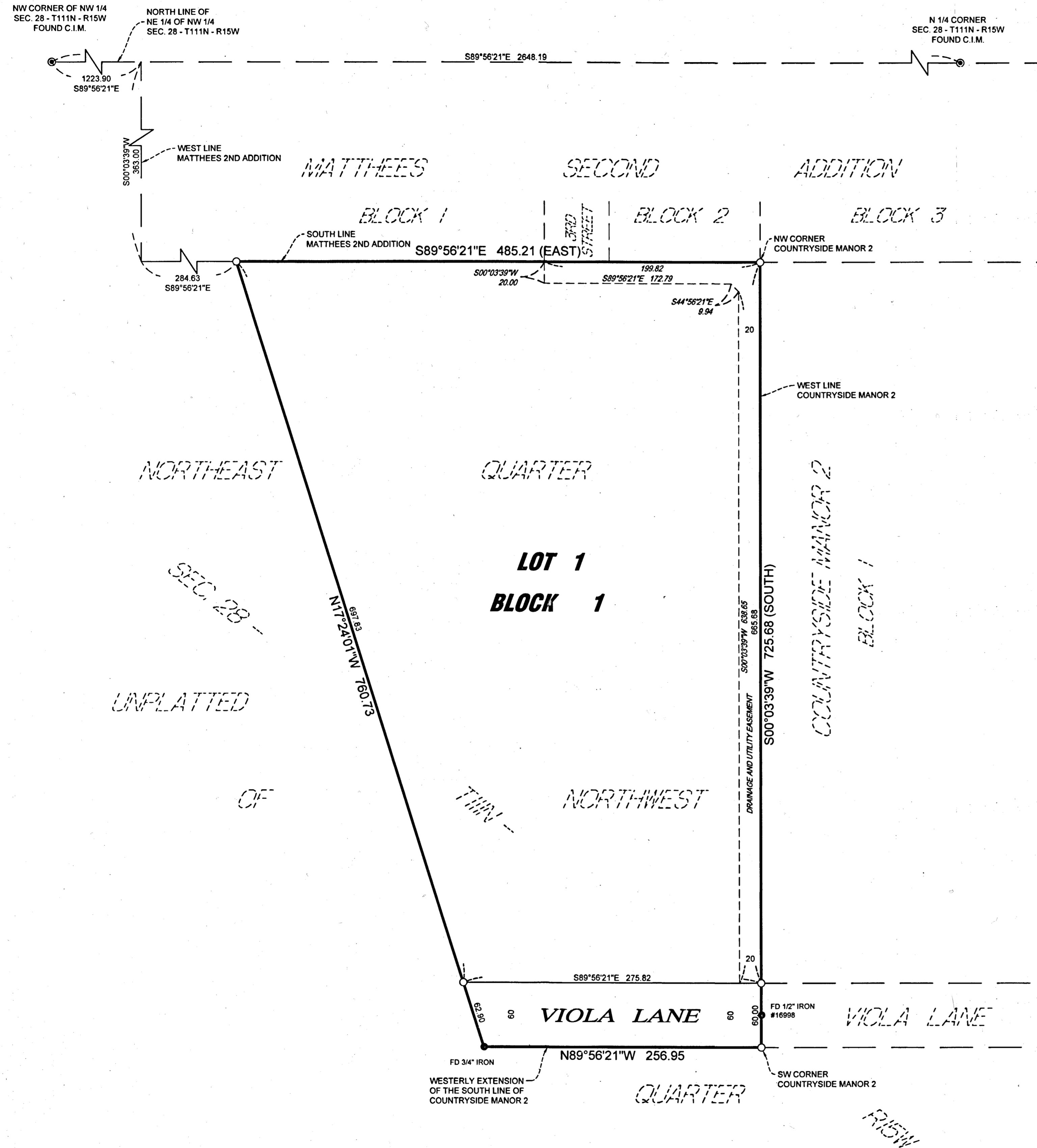
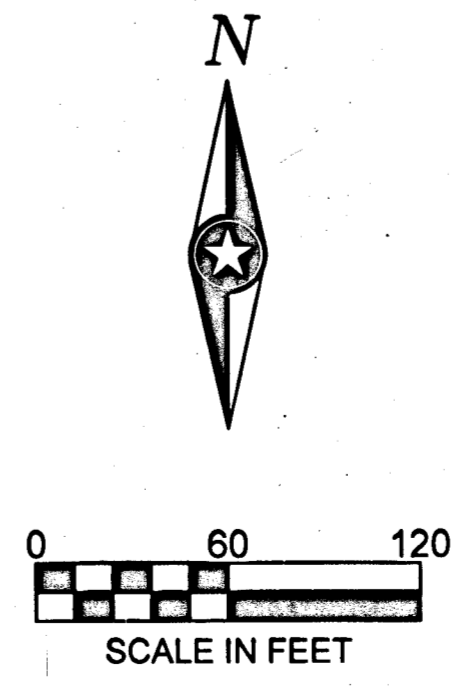


AG PARTNERS ADDITION



- LEGEND**
- Iron Monument Found
 - Indicates 1/2" Dia. x 18" Long Solid Iron Pipe Set With Plastic Cap Marked By ISG, License No. 45817

BEARING NOTE:
For the purposes of this plat the north line of the Northeast Quarter of the Northwest Quarter of Section 28, Township 111N, Range 15W is assumed to bear South 89 degrees 56 minutes 21 seconds East.



INSTRUMENT OF DEDICATION
KNOW ALL PERSONS BY THESE PRESENTS: That Ag Partners, a Minnesota cooperative corporation, owner of the following described property:
That part of the Northeast Quarter of the Northwest Quarter of Section 28, Township 111 North, Range 15 West, Goodhue County, Minnesota, described as follows:
Beginning at the northwest corner of COUNTRYSIDE MANOR 2, according to the plat thereof on file at the County Recorder's Office; thence South 00 degrees 03 minutes 39 seconds West, along the west line of said COUNTRYSIDE MANOR 2 for a distance of 725.68 feet to the southwest corner of said COUNTRYSIDE MANOR 2; thence North 89 degrees 56 minutes 21 seconds West, along the westerly extension of the south line of said COUNTRYSIDE MANOR 2 for a distance of 256.95 feet; thence North 17 degrees 24 minutes 01 seconds West a distance of 760.73 feet to the south line of MATTHEES 2ND ADDITION, according to the plat thereof on file at the County Recorder's Office; thence South 89 degrees 56 minutes 21 seconds East, along said south line 485.22 feet to the point of beginning.

Has caused the same to be surveyed and platted as AG PARTNERS ADDITION and does hereby dedicate to the public, for public use, the public ways and the drainage and utility easements as created by this plat.
In witness whereof said Ag Partners, a Minnesota cooperative corporation, has caused these presents to be signed by its proper officer this 20 day of December, 2019
William Philbrecht
Chief Executive Officer
State of MN
County of Goodhue
This instrument was acknowledged before me on December 20, 2019 by William Philbrecht, Chief Executive Officer, of Ag Partners, a Minnesota cooperative corporation, on behalf of the corporation.
Rebecca Franz (sign)
Rebecca Franz (print)
Notary Public
My Commission Expires Jan 31, 2021

SURVEYOR'S CERTIFICATE
I, Mark A. Schwanz, do hereby certify that this plat was prepared by me or under my direct supervision; that I am a duly Licensed Land Surveyor in the State of Minnesota, that this plat is a correct representation of the boundary survey; that all mathematical data and labels are correctly designated on this plat; that all outside boundary monuments of the plat have been correctly set and that all other required monuments will be correctly set within one year of the recording of this plat; that as of the date of this certificate, all water boundaries and wet lands, as defined in Minnesota Statutes, Section 505.01, Subd. 3, are shown and labeled on this plat; and all public ways are shown and labeled on this plat.
Dated this 16th day of December, 2019
Mark A. Schwanz
Mark A. Schwanz, Licensed Land Surveyor
Minnesota License No. 45817

State of Minnesota
County of Goodhue
This instrument was acknowledged before me on December 16th, 2019, by Mark A. Schwanz, Licensed Land Surveyor.
Jennifer R. Chiodo
Jennifer R. Chiodo
Notary Public, Minnesota
My Commission Expires 11/31/2020

CITY COUNCIL, CITY OF GOODHUE, MINNESOTA
This plat of AG PARTNERS ADDITION, was approved and accepted by the City Council of the City of Goodhue, Minnesota at a regular meeting thereof held this 20th day of December, 2019, and said plat is in compliance with the provisions of Minnesota Statutes, Section 505.03, Subd. 2.
Kerry D. Bin
Mayor
Abri Agre
City Clerk

COUNTY SURVEYOR
Pursuant to Chapter 389.09, laws of Minnesota, and Goodhue County Ordinance No. 2-78, this plat has been approved this 26th day of December, 2019.
Lisa M. Hanni
Lisa M. Hanni, L.S., Goodhue County Surveyor

COUNTY AUDITOR/TREASURER, GOODHUE COUNTY, MINNESOTA
Pursuant to Minnesota Statutes, Chapter 505.021, Subd. 9, taxes payable for the year 2019 on the land hereinbefore described have been paid. Also pursuant to Minnesota Statutes, Section 272.12, there are no delinquent taxes and transfer entered this 26th day of December, 2019.
D.J. Anderson
Goodhue County Auditor/Treasurer
By: DDW Deputy

COUNTY RECORDER, GOODHUE COUNTY, MINNESOTA
I hereby certify that this plat of AG PARTNERS ADDITION was filed in the office of the County Recorder for public record on this 30th day of December, 2019, at 1:52 o'clock P.M. and was duly filed as Document No. 660722
Cuthbert
Goodhue County Recorder

