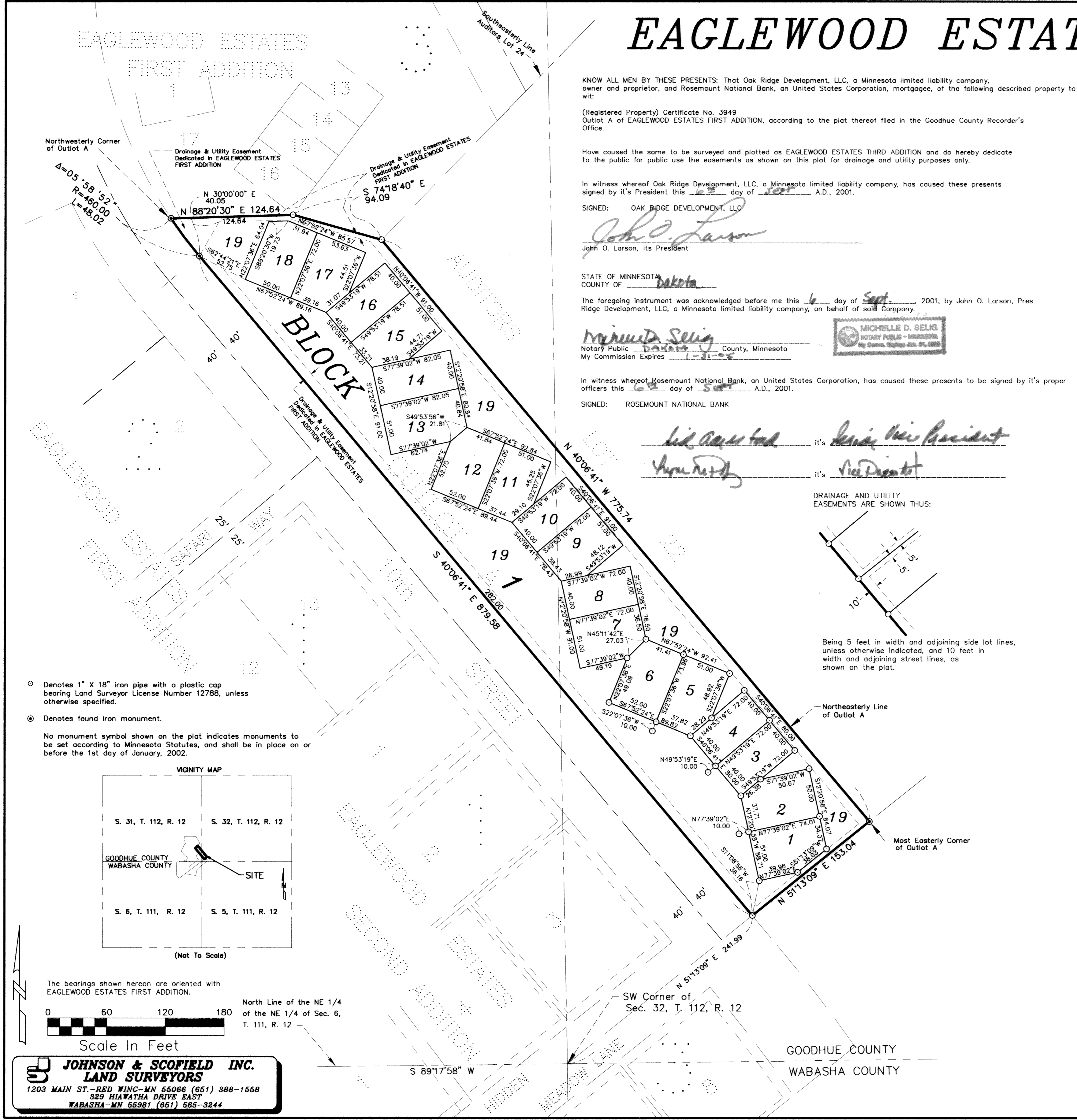


EAGLEWOOD ESTATES THIRD ADDITION



KNOW ALL MEN BY THESE PRESENTS: That Oak Ridge Development, LLC, a Minnesota limited liability company, owner and proprietor, and Rosemount National Bank, an United States Corporation, mortgagee, of the following described property to wit:

(Registered Property) Certificate No. 3949
 Outlot A of EAGLEWOOD ESTATES FIRST ADDITION, according to the plat thereof filed in the Goodhue County Recorder's Office.

Have caused the same to be surveyed and platted as EAGLEWOOD ESTATES THIRD ADDITION and do hereby dedicate to the public for public use the easements as shown on this plat for drainage and utility purposes only.

In witness whereof Oak Ridge Development, LLC, a Minnesota limited liability company, has caused these presents signed by it's President this 12th day of Sept A.D., 2001.

SIGNED: OAK RIDGE DEVELOPMENT, LLC
John O. Larson
 John O. Larson, its President

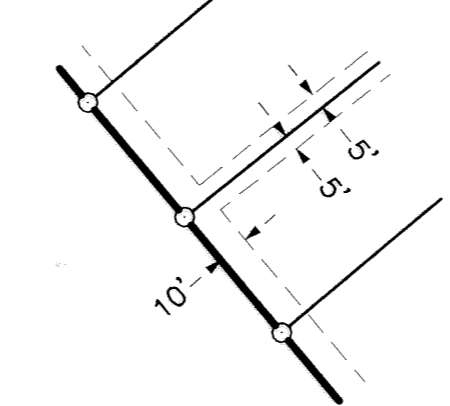
STATE OF MINNESOTA
 COUNTY OF Dakota
 The foregoing instrument was acknowledged before me this 6 day of Sept, 2001, by John O. Larson, Pres Ridge Development, LLC, a Minnesota limited liability company, on behalf of said Company.

Michelle D. Selig
 Notary Public Dakota County, Minnesota
 My Commission Expires 1-21-05

In witness whereof Rosemount National Bank, an United States Corporation, has caused these presents to be signed by it's proper officers this 12th day of Sept A.D., 2001.

SIGNED: ROSEMOUNT NATIONAL BANK
Sid Aarestad it's Senior Vice President
Ann Reddy it's Vice President

DRAINAGE AND UTILITY EASEMENTS ARE SHOWN THUS:



Being 5 feet in width and adjoining side lot lines, unless otherwise indicated, and 10 feet in width and adjoining street lines, as shown on the plat.

STATE OF MINNESOTA
 COUNTY OF Dakota
 The foregoing instrument was acknowledged before me this 12th day of Sept, 2001.
 By Sid Aarestad it's Senior Vice President

and Lynn M. Pauly it's Vice President of Rosemount National Bank, a United States Corporation, on behalf of said corporation.

Michelle D. Selig
 Notary Public Dakota County, Minnesota
 My Commission expires 1-21-05

I hereby certify that I have surveyed and platted the property described on this plat as EAGLEWOOD ESTATES THIRD ADDITION that this plat is a correct representation of said survey, that all distances are correctly shown on said plat in feet and hundredths of a foot; that all monuments have been, or will be, correctly placed in the ground as shown; that the outside boundary lines are correctly designated, and there are no wet lands, as defined in Minnesota Statutes, Section 505.02, subd. 1, or public highways to be designated on said plat, other than as shown.

David A. Johnson
 David A. Johnson, Land Surveyor
 Minnesota License Number 12788

STATE OF MINNESOTA
 COUNTY OF GOODHUE
 The foregoing instrument was acknowledged before me this 10th day of January, 2001, by David A. Johnson, La

Beverly Lundquist
 Notary Public, Goodhue County, Minnesota
 My Commission Expires January 31, 2005

Checked and approved as in compliance with the Lake City Zoning Ordinance and Subdivision Regulations.

Alan J. Orthaus
 Chairperson, Lake City Planning Commission
 Approved by Lake City Council on this 11th day of December, 2001.

Hilmar Bremer
 Mayor, Lake City
 Attest:
Bruce Schumacher
 City Clerk

I hereby certify that proper evidence of title has been presented to and examined by me, and I hereby approve this plat as to form and execution.
 Dated this 20th day of December, 2001.

Philip Gartner
 Philip Gartner, Lake City Attorney

Taxes payable in the year 2000 on the land herein described have been paid, there are no delinquent taxes and transfer has been entered this 16 day of Jan, 2001.

Brad Johnson
 Goodhue County Auditor/Treasurer
 By T. Bohner Deputy

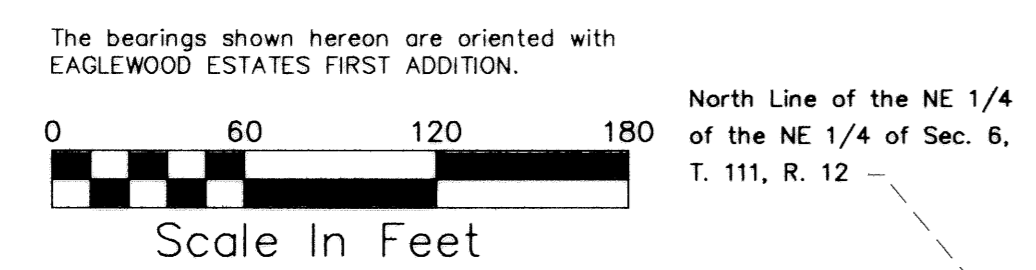
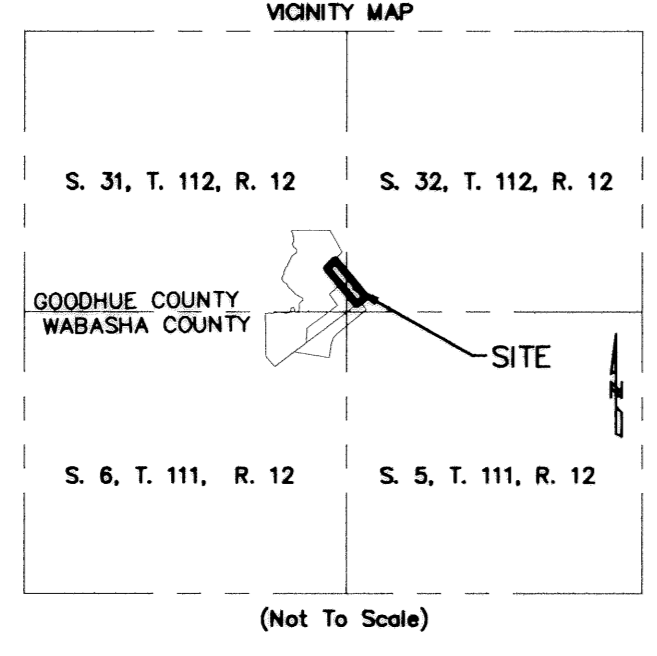
Pursuant to Chapter 389.09, laws of Minnesota and Goodhue County Ordinance No. 2-78, this plat has been approved this 1st day of January, 2001.

Lisa M. Skipton
 Lisa M. Skipton, LS
 Goodhue County Surveyor

I hereby certify that the within instrument was filed in this office for record this 18th day of Jan, 2001 at 8:00 o'clock A m and was duly recorded as document number 15927 file number 3028 cert. # 4335

Jean M. Dankers
 Goodhue County Registrar of Titles

○ Denotes 1" X 18" iron pipe with a plastic cap bearing Land Surveyor License Number 12788, unless otherwise specified.
 ● Denotes found iron monument.
 No monument symbol shown on the plat indicates monuments to be set according to Minnesota Statutes, and shall be in place on or before the 1st day of January, 2002.



JOHNSON & SCOFIELD INC.
 LAND SURVEYORS
 1203 MAIN ST - RED WING - MN 55066 (651) 388-1558
 329 HIWATHA DRIVE EAST
 WABASHA - MN 55981 (651) 565-3244