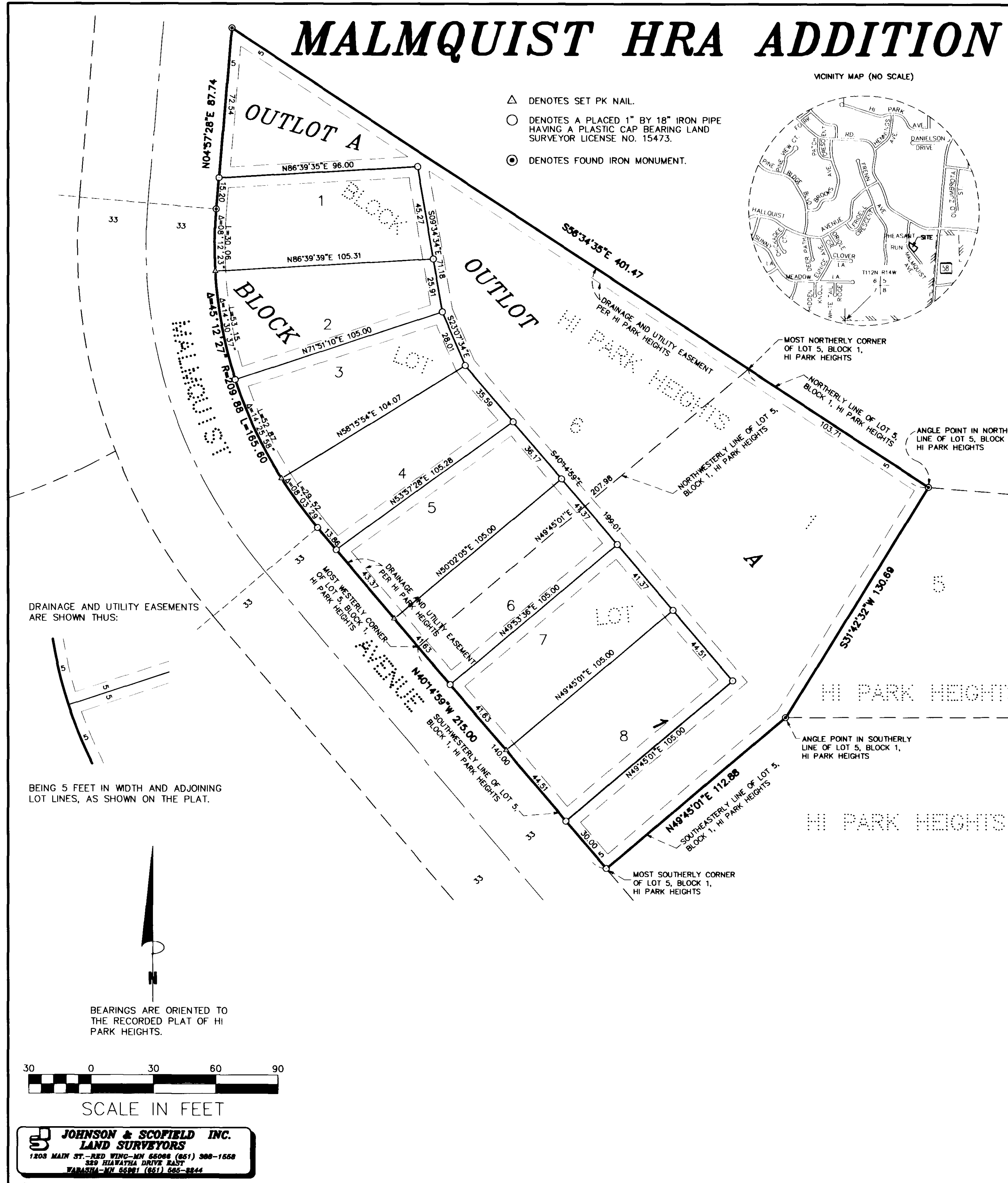


MALMQUIST HRA ADDITION



KNOW ALL MEN BY THESE PRESENTS: That Red Wing Housing and Redevelopment Authority, a public body Corporate and Politic under the laws of the State of Minnesota, owners and proprietors, and Associated Bank Minnesota, National Association, mortgagees, of the following described property to wit:

That part of Lot 5, Block 1 of HI PARK HEIGHTS, according to the recorded plat thereof filed in the Goodhue County Recorders Office, described as following:

Commencing at the most southerly corner of said Lot 5; thence North 49 degrees 45 minutes 01 second East, assumed bearing, along the southeasterly line of said Lot 5, a distance of 112.88 feet to an angle point in the southerly line of said Lot 5, being the point of beginning of the land to be described; thence South 49 degrees 45 minutes 01 second West, along said southeasterly line of Lot 5, a distance of 112.88 feet to the most southerly corner of said Lot 5; thence North 40 degrees 14 minutes 59 seconds West, along the westerly line of said Lot 5, a distance of 140.00 feet to the most westerly corner of said Lot 5; thence North 49 degrees 45 minutes 01 second East, along the northwesterly line of said Lot 5, a distance of 207.98 feet to the most northerly corner of said Lot 5; thence south 56 degrees 34 minutes 35 seconds East, along the northerly line of said Lot 5, a distance of 103.71 feet to an angle point in the northerly line of said Lot 5; thence South 31 degrees 42 minutes 32 seconds West, a distance of 130.69 feet to the point of beginning.

AND

Lot 6 in Block 1 of HI PARK HEIGHTS, according to the plat thereof on file and of record in the office of the County Recorder for the County of Goodhue and State of Minnesota.

Have caused the same to be surveyed and platted as MALMQUIST HRA ADDITION, and hereby dedicate to the public, for public use forever, the easements as shown on this plat for drainage and utility purposes only.

In witness whereof said Red Wing Housing and Redevelopment Authority, has caused these presents to be signed by its proper officers this 16th day of May, 2003

By Nancy E Miketta its Board Chairperson and
Marty Smat its Executive Director

STATE OF MINNESOTA
 COUNTY OF Goodhue

The foregoing instrument was acknowledged before me this 16th day of May, 2003

by Marty Smat its Executive Director and
Nancy E Miketta its Board Chairperson of Red Wing Housing and Redevelopment Authority, a public body Corporate and Politic under the laws of the State of Minnesota, on behalf of said Corporation.

Notary Public Goodhue County, Minnesota
 My Commission Expires 01-31-07

And in witness whereof said Associated Bank Minnesota, National Association, has caused these presents to be signed by its proper officers this 12th day of May, 2003

SIGNED:
 ASSOCIATED BANK MINNESOTA, NATIONAL ASSOCIATION

By P. Munt its Vice President and
Mate Benson its Vice President

STATE OF MINNESOTA
 COUNTY OF Goodhue

The foregoing instrument was acknowledged before me this 12th day of May, 2003

by Don Massett its Vice President and
Martin Benson its Vice President of Associated Bank Minnesota, National Association.

Cheri L. Smith
 Notary Public Goodhue County, Minnesota
 My Commission Expires 1-31-05

I hereby certify that I have surveyed and platted the property described on this plat as MALMQUIST HRA ADDITION; that this plat is a correct representation of said survey; that all distances are correctly shown on said plat in feet and hundredths of a foot; that all monuments have been correctly placed in the ground as shown on said plat; that the outside boundary lines are correctly designated, and there are no wet lands, as defined in Minnesota Statutes, Chapter 505.02, subd. 1, or public highways to be designated on said plat, other than as shown.

Alan K. Scofield
 Alan K. Scofield, Land Surveyor
 Minnesota License Number 15473

STATE OF MINNESOTA
 COUNTY OF GOODHUE

The foregoing instrument was acknowledged before me this 2nd day of April, 2003 by Alan K. Scofield, Licensed Land Surveyor, Minnesota License Number 15473.

Beverly Lundquist
 Notary Public, Goodhue County, Minnesota
 My Commission Expires January 31, 2005

Approved by the City Council of Red Wing, Minnesota, this 24th day of FEBRUARY, 2003

SIGNED: Bradford Johnson City Clerk Vern Stuppelberg Mayor

Approved by the Planning Commission of the City of Red Wing, Minnesota, this 18th day of FEBRUARY, 2003

By George R. Johnson Chairperson

Taxes payable in the year 2003 on the land herein described have been paid, there are no delinquent taxes and transfer has been entered this 2nd day of June, 2003.

Bradford Johnson
 Goodhue County Auditor/Treasurer

By T. Bohrer Deputy

Pursuant to Chapter 389.09, laws of Minnesota and Goodhue County Ordinance No. 2-78, this plat has been approved this 2nd day of June, 2003

By Lisa Skipton
 Goodhue County Surveyor
 Lisa M. Skipton, LS

I hereby certify that the within instrument was filed in this office for record this 3rd day of June, 2003, at 9:00 AM and was duly recorded as document number 486670, file number 316B

Jean M. Dankers
 Goodhue County Recorder