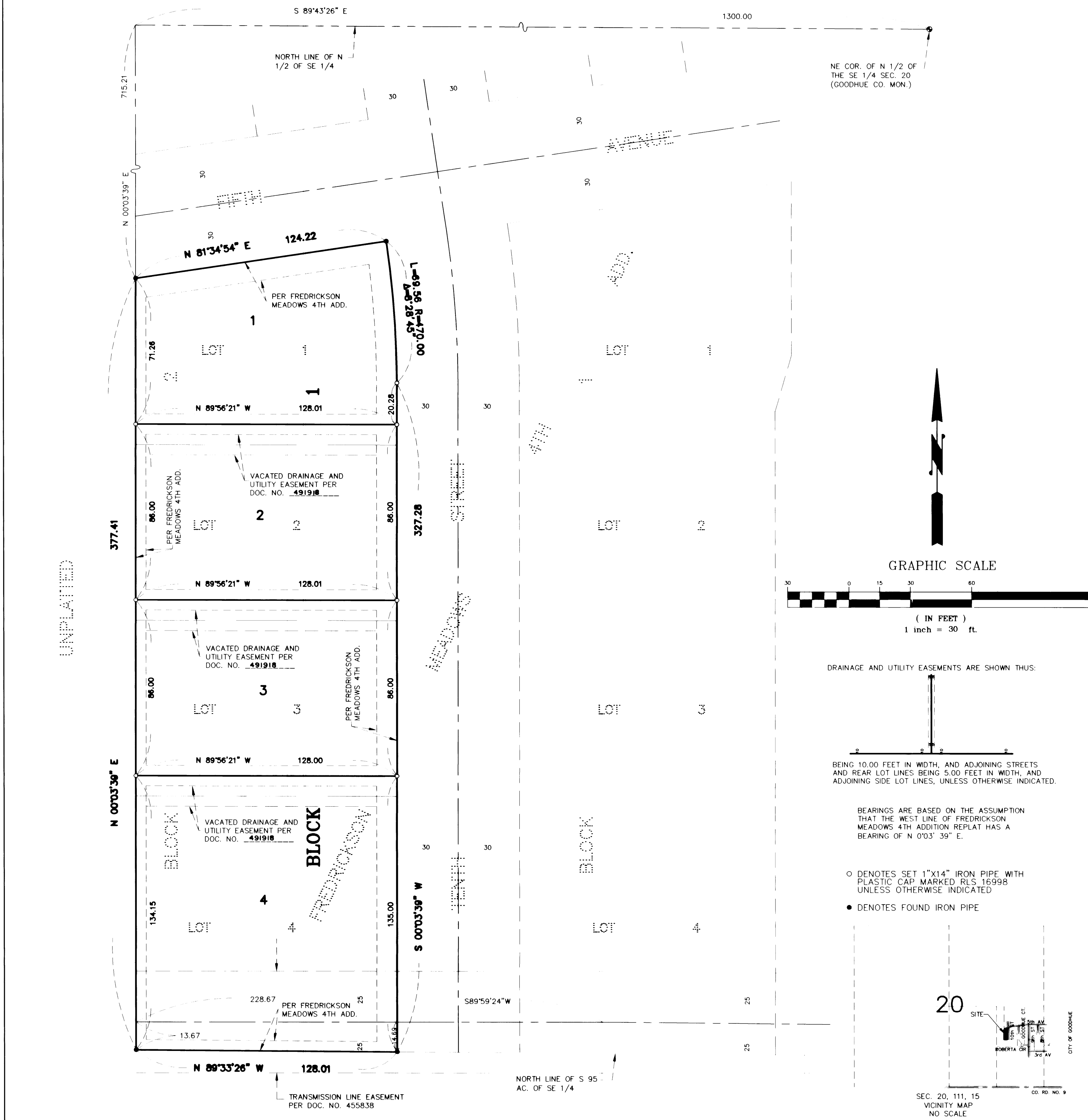
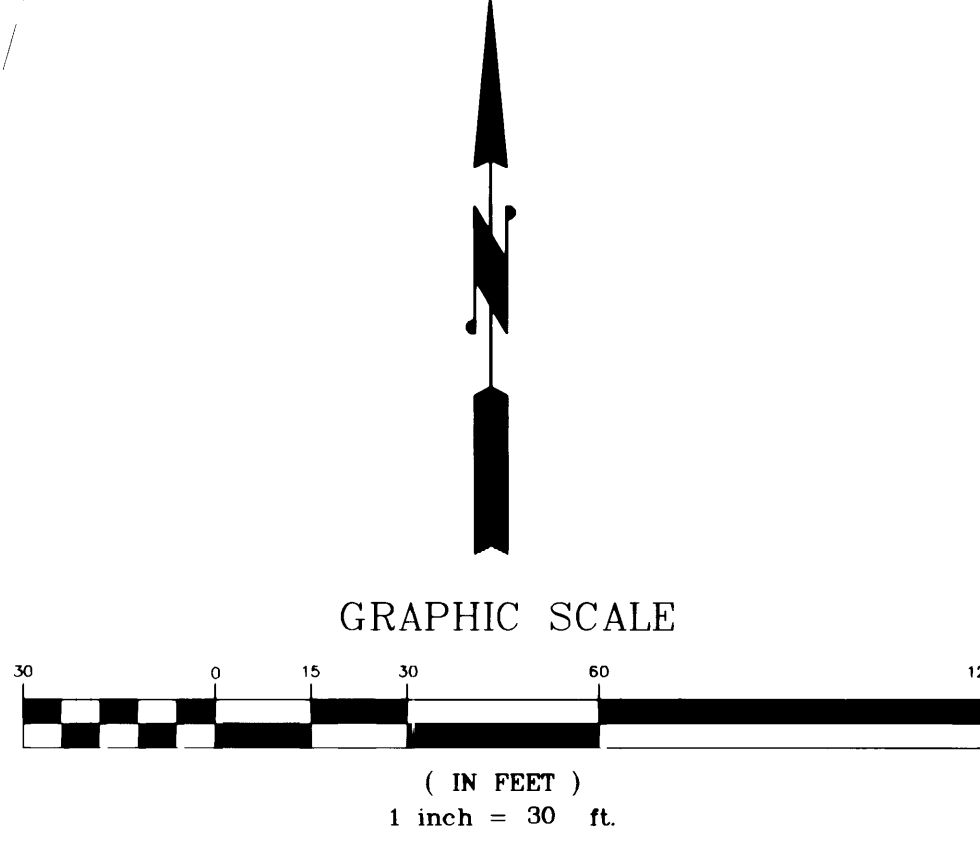


# FREDRICKSON MEADOWS 4TH ADDITION REPLAT

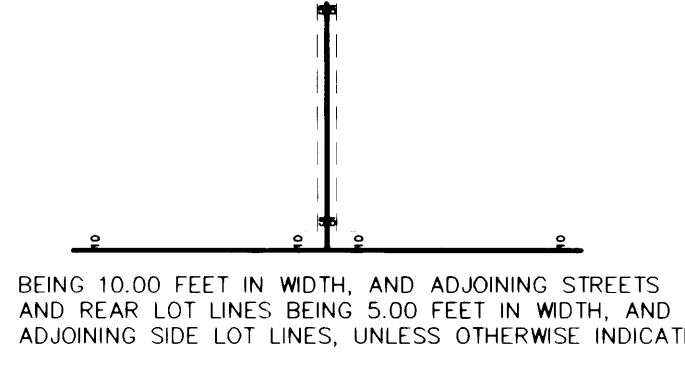


UNPLATTED

NE COR. OF N 1/2 OF THE SE 1/4 SEC. 20 (GOODHUE CO. MN.)

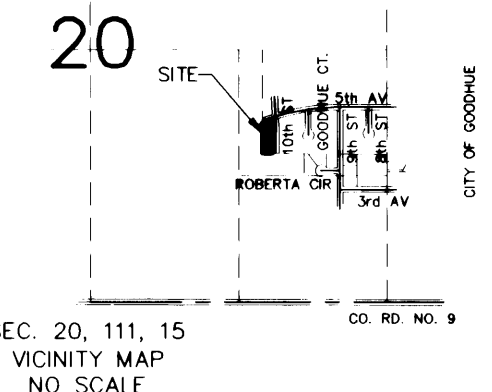


DRAINAGE AND UTILITY EASEMENTS ARE SHOWN THUS:



BEARINGS ARE BASED ON THE ASSUMPTION THAT THE WEST LINE OF FREDRICKSON MEADOWS 4TH ADDITION REPLAT HAS A BEARING OF N 0°03'39\"/>

- DENOTES SET 1"x14" IRON PIPE WITH PLASTIC CAP MARKED RLS 16998 UNLESS OTHERWISE INDICATED
- DENOTES FOUND IRON PIPE



KNOW ALL MEN BY THESE PRESENTS: That The City of Goodhue, a municipal corporation, fee owner, of the following described property situated in the County of Goodhue, State of Minnesota, to wit:

Lots 1 and 2, Block 2, FREDRICKSON MEADOWS 4TH ADDITION, according to the recorded plat thereof, on file in the office of the County Recorder, Goodhue County, Minnesota.

And Nilan M. Buck and Ellen T. Anderson Buck, husband and wife, fee owner, of the following described property situated in the County of Goodhue, State of Minnesota, to wit:

Lot 3, Block 2, FREDRICKSON MEADOWS 4TH ADDITION, according to the recorded plat thereof, on file in the office of the County Recorder, Goodhue County, Minnesota.

And Joseph F. Benda and Bonnie K. Benda, husband and wife, fee owner, of the following described property situated in the County of Goodhue, State of Minnesota, to wit:

Lot 4, Block 2, FREDRICKSON MEADOWS 4TH ADDITION, according to the recorded plat thereof, on file in the office of the County Recorder, Goodhue County, Minnesota.

Have caused the same to be surveyed and platted as FREDRICKSON MEADOWS 4TH ADDITION REPLAT and do hereby dedicate to the public, for public use forever the drainage and utility easements as shown on the plat.

In witness whereof the City of Goodhue, a municipal corporation, has caused these presents to be signed by its proper officers this 5<sup>th</sup> day of Sept, 2003.

Signed: Arland Voth Mayor  
Joe M. Zignego Clerk

State of Minnesota  
County of Goodhue

The foregoing instrument was acknowledged before me this 5<sup>th</sup> day of September, 2003, by Arland Voth, Mayor and Joe M. Zignego, Clerk of the City of Goodhue, a municipal corporation, on behalf of said corporation.

Beth S. Madsen  
Notary Public, Goodhue County, Minnesota  
My Commission Expires 1-31-05

In witness whereof Joseph F. Benda and Bonnie K. Benda, husband and wife, have caused these presents to be signed this 5<sup>th</sup> day of Sept, 2003.

Signed: Joseph F. Benda  
Bonnie K. Benda

State of Minnesota  
County of Goodhue

The foregoing instrument was acknowledged before me this 5<sup>th</sup> day of September, 2003, by Joseph F. Benda and Bonnie K. Benda, husband and wife.

Beth S. Madsen  
Notary Public, Goodhue County, Minnesota  
My Commission Expires 1-31-05

In witness whereof Nilan M. Buck and Ellen T. Anderson Buck, husband and wife, have caused these presents to be signed this 5<sup>th</sup> day of Sept, 2003.

Signed: Nilan M. Buck  
Ellen T. Anderson Buck

State of Minnesota  
County of Goodhue

The foregoing instrument was acknowledged before me this 5<sup>th</sup> day of September, 2003, by Nilan M. Buck and Ellen T. Anderson Buck, husband and wife.

Beth S. Madsen  
Notary Public, Goodhue County, Minnesota  
My Commission Expires 1-31-05

I hereby certify that I have surveyed and platted the property described on this plat as FREDRICKSON MEADOWS 4TH ADDITION REPLAT that this plat is a correct representation of said survey, that all distances are correctly shown on said plat in feet and hundredths of a foot; that all monuments have been correctly placed in the ground as shown on said plat; that the outside boundary lines are correctly designated on said plat; and there are no wetlands as defined in MS 505.02 Subd 1, or Public Highways to be designated on said plat, other than shown.

V. Richard Samuelson  
V. Richard Samuelson, Land Surveyor  
Minnesota License Number 16998

State of Minnesota  
County of Goodhue

The foregoing instrument was acknowledged before me this 4<sup>th</sup> day of September, 2003, by V. Richard Samuelson, Land Surveyor.

Connie R. Frandrup  
Notary Public, Goodhue County, Minnesota  
My Commission Expires 11/31/2005

Reviewed by the Planning Commission of the City of Goodhue, Minnesota this 5<sup>th</sup> day of Sept, 2003.

SIGNED: Arland Voth Chairman ATTEST: Joe Zignego Secretary

Approved by the City of Goodhue, Minnesota this 5<sup>th</sup> day of Sept, 2003.

SIGNED: Arland Voth Mayor ATTEST: Joe Zignego City Clerk

Taxes payable in the year 2003 on the land herein described have been paid, there are no delinquent taxes and transfer has been entered this 5<sup>th</sup> day of Sept, 2003.

Bradford Johnson By: Baker Deputy  
Goodhue County Auditor / Treasurer

Pursuant to Chapter 389.09, laws of Minnesota, and Goodhue County Ordinance No. 2-78, this plat has been approved this 10<sup>th</sup> day of September, 2003.

Lisa M. Skipton  
Lisa M. Skipton, Goodhue County Surveyor

I hereby certify that the within instrument was filed in this office for record this 11<sup>th</sup> day of Sept, 2003 at 8:00 o'clock A.M. and was duly recorded as document number 492575, file number 319A.

Jean M. Dankers  
Goodhue County Recorder

PHONE: (507) 263-3274  
SAMUELSON SURVEYING INC.  
1103 West Main Street  
Cannon Falls, MN, 55009  
V. Richard Samuelson  
Registered Land Surveyor