

WYATTS VALLEY VIEW

KNOW ALL MEN BY THESE PRESENTS: That Gary R. George and Margery C. George, husband and wife, and Flower Valley Orchards, Inc., a Minnesota Corporation, owners and proprietors, and Associated Bank Minnesota, N. A., an United States Corporation, mortgagees, of the following described land to wit:

That part of the North Half of the Southeast Quarter of Section 35, Township 113 North, Range 14 West, Goodhue County, Minnesota described as follows:

Commencing at the northeast corner of the Southeast Quarter of said Section 35; thence on an assumed bearing of South 0 degrees, 21 minutes, 00 seconds East, along the east line of the Southeast Quarter of said Section 35, a distance of 480.86 feet; thence South 89 degrees, 39 minutes, 00 seconds West, a distance of 683.38 feet to the most easterly corner of the Gary R. George Property, as described in Goodhue County Document No. 224078 as recorded in book B-11 of deeds, page 497, being the point of beginning of the land to be described; South 22 degrees, 22 minutes, 55 seconds West, along the southeasterly line of said Gary R. George property, a distance of 316.36 feet to the northeasterly right of way line of State Highway No. 61; thence North 67 degrees, 37 minutes, 05 seconds West, along the northeasterly right of way line of said State Highway No. 61, a distance of 792.08 feet to the easterly right of way line of the Minnesota Highway water right of way, thence North 12 degrees, 07 minutes, 05 seconds West, along said easterly right of way line, a distance of 276.74 feet; thence North 27 degrees, 52 minutes, 55 seconds East, along said easterly right of way line, and its northerly extension, a distance of 209.54 feet to the centerline of the abandoned Red Wing - Lake City Road; thence South 62 degrees, 36 minutes, 23 seconds East, along said centerline, a distance of 242.47 feet; thence South 59 degrees, 31 minutes, 28 seconds East, along said centerline of the abandoned Red Wing - Lake City Road, a distance of 583.43 feet to the most northerly corner of said Gary R. George property; thence South 58 degrees, 49 minutes, 20 seconds East, along said centerline, a distance of 110.88 feet to the point of beginning.

Have caused the same to be surveyed and platted as WYATTS VALLEY VIEW.

In witness whereof said Gary R. George and Margery C. George, husband and wife, have hereunto set their hands this 2 day of May, 2005.

Gary R. George Margery C. George
Gary R. George Margery C. George

STATE OF MINNESOTA
COUNTY OF Goodhue

The foregoing instrument was acknowledged before me this 2 day of May, 2005, by Gary R. George and Margery C. George, husband and wife.

Lyndette Plarom
Notary Public Goodhue County, Minnesota
My Commission Expires 1-31-2010

In witness whereof Associated Bank Minnesota, N. A., an United States Corporation, has caused these presents to be signed by its proper officers this 2 day of May, 2005.

Associated Bank Minnesota, N. A., an United States Corporation

Sandra L. Nelson its Bank Manager - Red Wing, MN

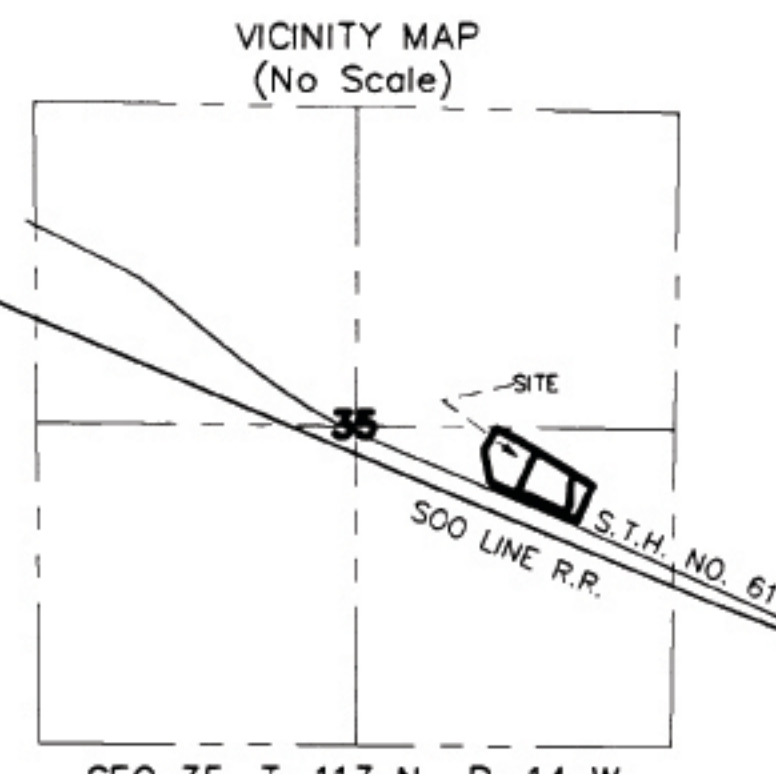
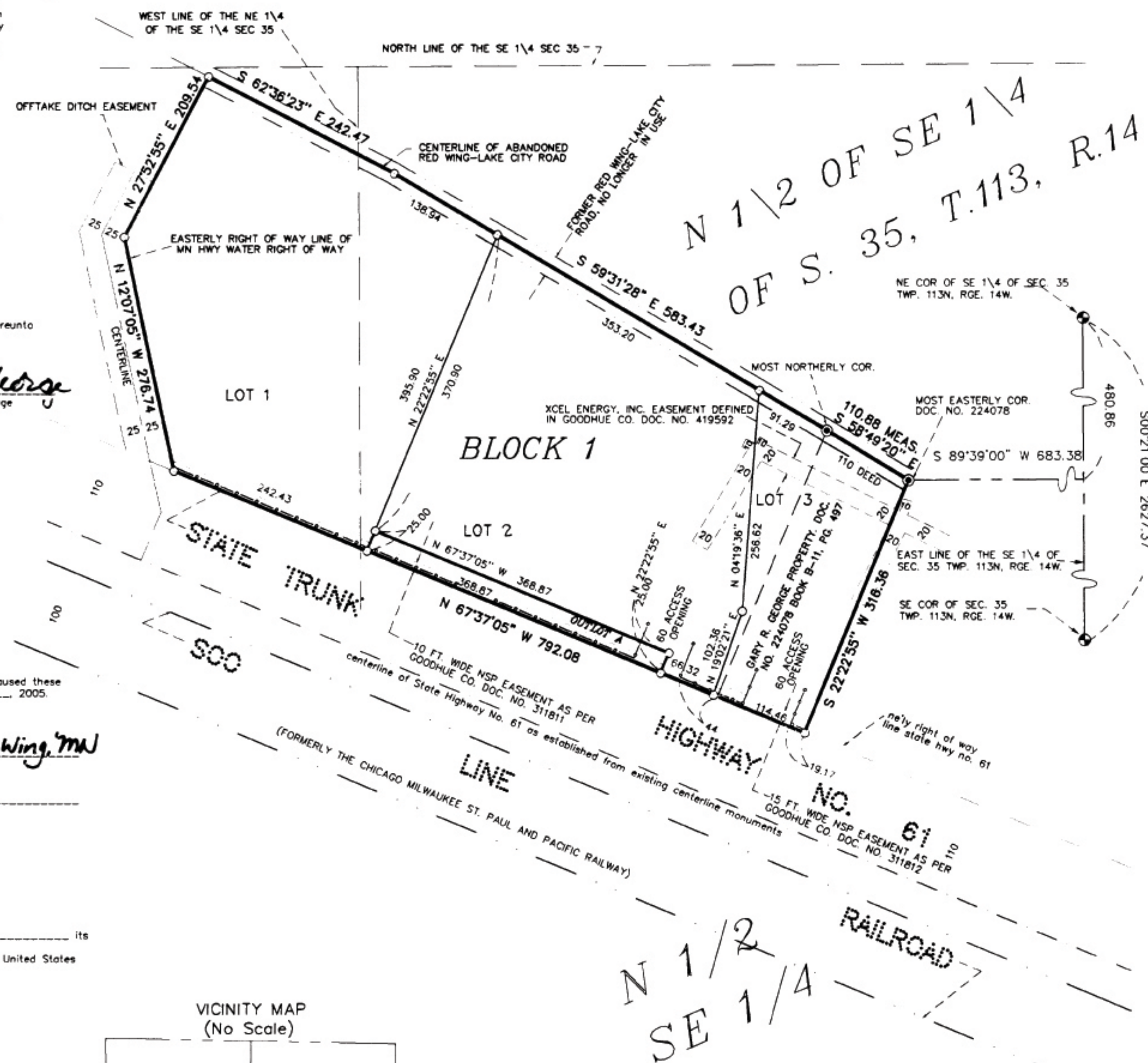
STATE OF MINNESOTA
COUNTY OF Goodhue

The foregoing instrument was acknowledged before me this 2 day of May, 2005, by Sandra L. Nelson its

Bank Manager and its of Associated Bank Minnesota, N. A., an United States Corporation, on behalf of said corporation.

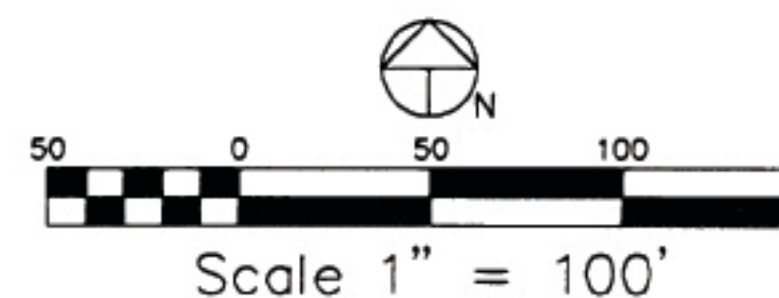
Lyndette Plarom
Notary Public Goodhue County, Minnesota
My Commission Expires 1-31-2010

JOHNSON & SCOFIELD INC.
LAND SURVEYORS
1203 MAIN ST. - RED WING - MN 55066 (651) 388-1558
626 JEFFERSON AVENUE
WABASHA - MN 55091 (651) 666-3244



- DENOTES RESTRICTED ACCESS PREVIOUSLY ACQUIRED BY THE STATE OF MINNESOTA.
- DENOTES A PLACED 1 INCH BY 1/8 INCH IRON PIPE HAVING A PLASTIC CAP BEARING LAND SURVEYOR LICENSE NO. 12788.
- DENOTES FOUND IRON MONUMENT.
- DENOTES FOUND GOODHUE COUNTY MONUMENT.

The bearings shown hereon are based on the 1996 adjustment of the Goodhue Co. coordinate system NAD 83 (HARN).



In witness whereof Flower Valley Orchards, Inc., a Minnesota Corporation, has caused these presents to be signed by its proper officers this 2 day of May, 2005.

Flower Valley Orchards, Inc., a Minnesota Corporation

Samuel E. Blue its President
Sarah K. Blue its Secretary

STATE OF MINNESOTA
COUNTY OF Goodhue

The foregoing instrument was acknowledged before me this 2 day of May, 2005, by Samuel E. Blue its President and Sarah K. Blue its Secretary of Flower Valley Orchards, Inc., a Minnesota Corporation, on behalf of said corporation.

Lyndette Plarom
Notary Public Goodhue County, Minnesota

My Commission Expires 1-31-2010

Approved by the County Board of Commissioners of Goodhue County, Minnesota, this 19 day of April, 2005.

Signed: Samuel E. Blue Attest: Sarah K. Blue
Chairman County Administrator

Approved by the Wabasha Township Board this 5 day of May, 2005.

Signed: Lyndette Plarom
Chairperson Wabasha Township Board

Taxes payable in the year 2005 on the land herein described have been paid, there are no delinquent taxes and transfer has been entered this 3 day of May, 2005.

B. Johnson
Goodhue County Auditor/Treasurer
By Sandra L. Nelson Deputy

I hereby certify that I have surveyed and platted the property described on this plat as WYATTS VALLEY VIEW; that this plat is a correct representation of said survey, that all distances are correctly shown on said plat in feet and hundredths of a foot; that all monuments have been correctly placed in the ground as shown on said plat; that the outside boundary lines are correctly designated, and there are no wet lands, as defined in Minnesota Statutes, Section 505.02, Subd. 1, or public highways to be designated on said plat other than as shown.

David A. Johnson
David A. Johnson, Land Surveyor
Minnesota Licensed Number 12788

STATE OF MINNESOTA
COUNTY OF GOODHUE

The foregoing instrument was acknowledged before me this 2 day of May, 2005, by David A. Johnson, Land Surveyor.

Notary Public Goodhue County, Minnesota
My Commission Expires January 31, 2009.

STACY BYSTROM
NOTARY PUBLIC - MINNESOTA
My Commission Expires Jan. 31, 2009

Pursuant to Chapter 389.09, laws of Minnesota and Goodhue County Ordinance No. 2-78, this plat has been approved this 5 day of April, 2005.

Lyndette Plarom
Lisa M. Hanni, Goodhue County Surveyor

I hereby certify that proper evidence of title has been presented to and examined by me and I hereby approve this plat as to form and execution.

Stephen H. Betts
Attorney for Goodhue County

I hereby certify that the within instrument was filed in this office for record this 6 day of May, 2005, at 1:00 PM and was duly recorded as document number 518126 file number 321B.

Joan M. Donkers by S. H. Betts
Goodhue County Recorder