

# CANNON RIVER BLUFFS THIRD ADDITION

KNOW ALL MEN BY THESE PRESENTS: That Red Wing II Partnership, LLC, a Minnesota Limited Liability Company, owner and proprietor, and Community Bank Corporation, a Minnesota Corporation, mortgagee of the following described property situated in the County of Goodhue and State of Minnesota, to wit:

Block 2, Cannon River Bluffs Second Addition, City of Red Wing, Goodhue County, Minnesota.

Have caused the same to be surveyed and platted as CANNON RIVER BLUFFS THIRD ADDITION and do hereby dedicate to the public for public use forever the easements as shown on the plat for drainage and utility purposes only.

In witness whereof said Red Wing II Partnership, LLC, a Minnesota Limited Liability Company, has caused these presents to be signed by its proper officers this 17<sup>th</sup> day of June, 2007.

Red Wing II Partnership, LLC  
By Mark M. Gergen, President  
By Lynn M. Giovannelli, Secretary

STATE OF MINNESOTA  
COUNTY OF Hennepin  
The foregoing instrument was acknowledged before me this 17<sup>th</sup> day of June, 2007, by Mark M. Gergen, Chief Manager of Red Wing II Partnership, LLC, and Lynn M. Giovannelli, Secretary of Red Wing II Partnership, LLC.

By Jackie Dee Larson  
Notary Public, Hennepin County, Minnesota  
My Commission Expires January 31, 2011

In witness whereof said Community Bank Corporation, a Minnesota Corporation has caused these presents to be signed by its proper officer this 17<sup>th</sup> day of June, 2007.

By William A. Traxler, President, Chanhassen Office  
Community Bank Corporation

STATE OF MINNESOTA  
COUNTY OF Sibley  
The foregoing instrument was acknowledged before me this 17<sup>th</sup> day of June, 2007, by William A. Traxler, President of Community Bank Corporation, Chanhassen Office.

By Jean Savage  
Notary Public, Sibley County, Minnesota  
My Commission Expires 1-31-2010

I hereby certify that I have surveyed and platted the property described on this plat as CANNON RIVER BLUFFS THIRD ADDITION; that this plat was prepared by me or under my direct supervision and that I am a duly Licensed Land Surveyor under the laws of the State of Minnesota; that this plat is a correct representation of the survey; that all distances are correctly shown on the plat in feet and hundredths of a foot; that all monuments have been correctly placed in the ground as shown or will be correctly placed in the ground as designated; that the outside boundary lines are correctly designated on the plat; and that there are no wet lands as defined in MS 505.02, Subd. 1, or public highways to be designated other than as shown.

By Larry R. Couture  
Larry R. Couture, Land Surveyor  
Minnesota License No. 9018

STATE OF MINNESOTA  
COUNTY OF Dakota  
The foregoing Surveyor's Certificate was acknowledged before me this 17<sup>th</sup> day of June, 2007, by Larry R. Couture, Minnesota License No. 9018.

By Jeffrey L. Bohlen  
Notary Public, Dakota County, Minnesota  
My commission expires January 31, 2012

Pursuant to Chapter 389.09, laws of Minnesota and Goodhue County Ordinance No. 2-78, this plat has been approved this 20<sup>th</sup> day of June, 2007.

By Lisa M. Hanni  
Lisa M. Hanni  
Goodhue County Surveyor

Approved by the Planning Commission of the City of Red Wing, Minnesota, at a regular meeting thereof, on the 20<sup>th</sup> day of June, 2007.  
Chairman

We do hereby certify that on the 14<sup>th</sup> day of May, 2007, the City Council of Red Wing, Minnesota approved this plat by resolution and is in compliance with the provisions of Minnesota Statutes Section 505.03, Subdivision 2.

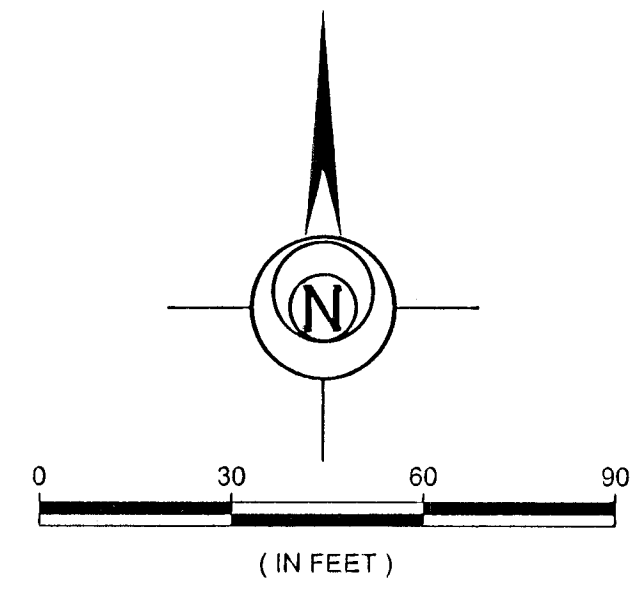
By Ronna Sumner, Mayor  
By Mrs. [Signature], Clerk

I do hereby certify that the taxes for the year 2007 for the land described on this plat as CANNON RIVER BLUFFS THIRD ADDITION have been paid and no delinquent taxes due and transfer entered on this 18<sup>th</sup> day of June, 2007.

By Candice Hinester  
County Treasurer-Auditor, Goodhue County, Minnesota

I hereby certify that this instrument was filed in the office of the County Recorder for record this 21 day of June, 2007, at 3:30 o'clock P.M., and was duly recorded as Document No. 546088.

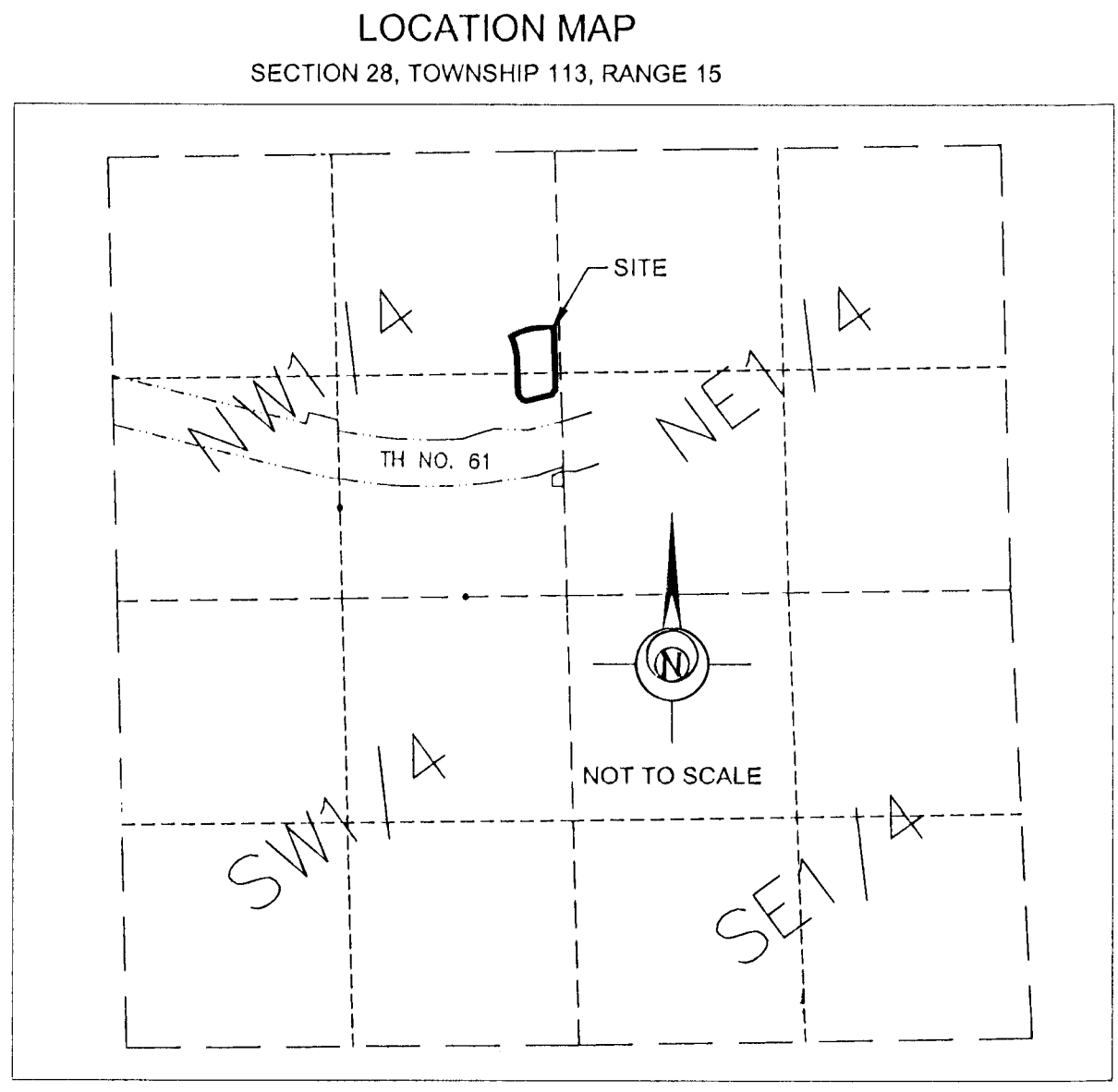
By [Signature]  
County Recorder, Goodhue County, Minnesota



THE EAST LINE OF BLOCK 2, CANNON RIVER BLUFFS SECOND ADDITION IS ASSUMED TO BEAR S01°39'29"E.

• DENOTES IRON PIPE MONUMENT FOUND.

NO MONUMENT SYMBOL AT ANY STATUTE REQUIRED LOCATION WILL BE SET WITH A 1/2 INCH x 14 INCH IRON PIPE, WITHIN ONE YEAR OF THE RECORDING OF THIS PLAT BY LICENSE NUMBER 9018.



Bohlen Surveying & Associates

31432 Follage Avenue Northfield, MN 55057  
1584 Cliff Road E. Burnsville, MN 55337  
Phone: (507) 645-7768 Fax: (507) 645-7799  
Phone: (952) 895-9212 Fax: (952) 895-9259

