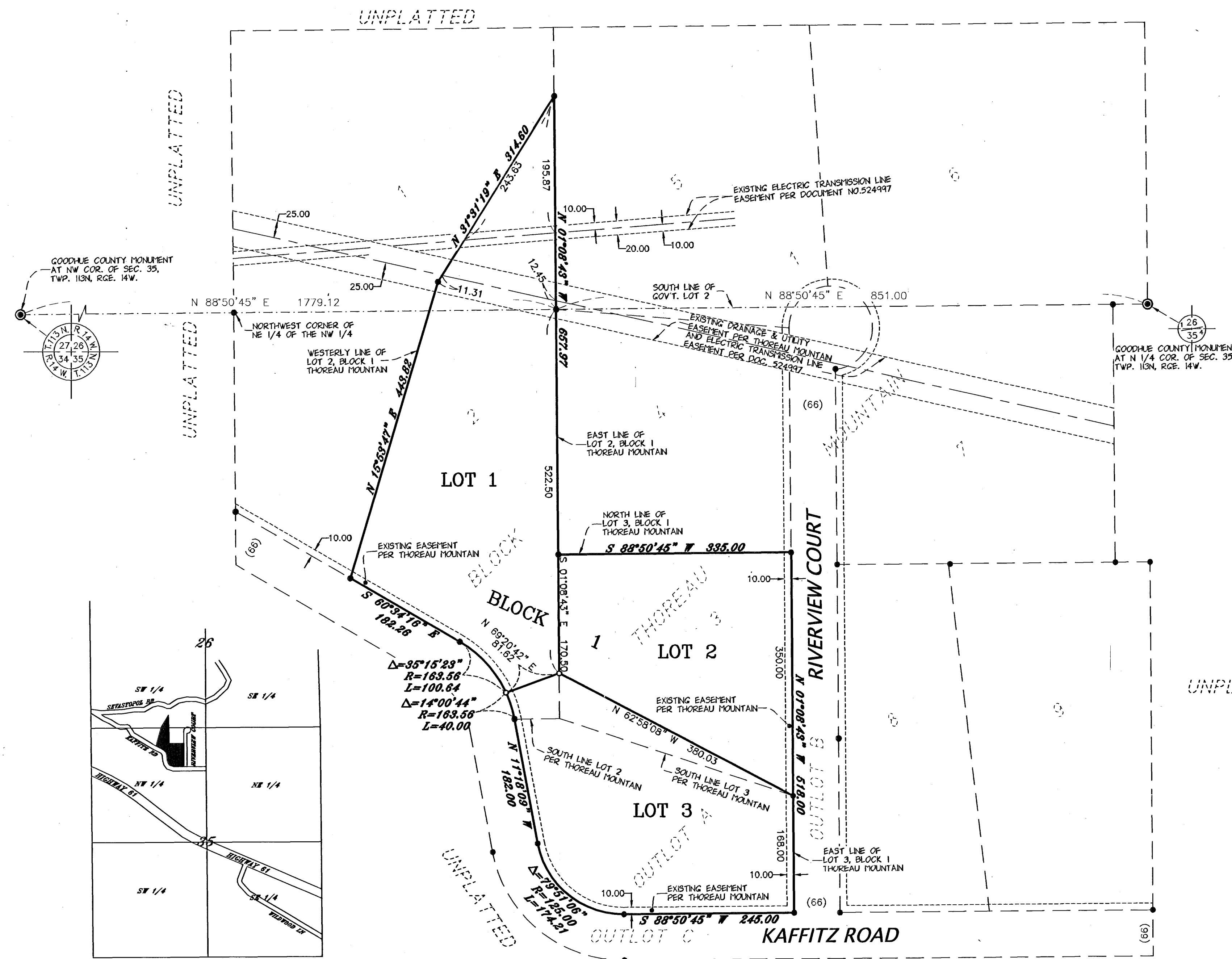


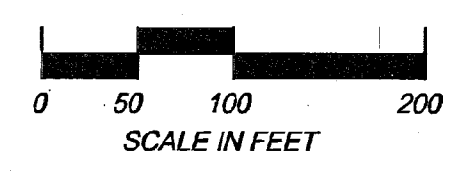
THOREAU MOUNTAIN SECOND SUBDIVISION



VICINITY MAP
"NOT TO SCALE"
Sections 26 & 35, Township 113 North,
Range 14 West

LEGEND

- Denotes a 3/4 inch x 15 inch Iron Pipe set with a Plastic Cap Stamped 42302 to be set within one year of recording
- Denotes an Iron Monument Found
- ⊙ Denotes a Found Cast Iron Monument



Bearings are Referenced to the East Line of Lot 3, Block 1, THOREAU MOUNTAIN which is assumed to bear N 01°08'43" W.

INSTRUMENT OF DEDICATION

KNOW ALL PERSONS BY THESE PRESENTS: That Gadient Brothers Construction LLC, a Minnesota Limited Liability Company, owner and proprietor of the following described property situated in the County of Goodhue, State of Minnesota, to wit:
Lots 2 and 3, Block 1, and Outlot A, THOREAU MOUNTAIN, according to the recorded plat on file and of record in the Office of the County Recorder, Goodhue County, Minnesota.
Containing 7.70 acres, more or less.

Has caused the same to be surveyed and platted as THOREAU MOUNTAIN SECOND SUBDIVISION and does hereby dedicate to the public for public use the public ways and easements as shown on the plat.

In witness whereof said Gadient Brothers Construction, LLC, a Minnesota Limited Liability Company, has caused these presents to be signed by its proper officer this 11th day of June, 2008.

Tracy Gadient
Gadient Brothers Construction, LLC
Tracy Gadient, Chief Manager

STATE OF MINNESOTA
COUNTY OF GOODHUE

This foregoing instrument was acknowledged before me this 11th day of June, 2008, by Tracy Gadient, chief manager of Gadient Brothers Construction, LLC, a Minnesota Limited Liability Company on behalf of the company.

Bruno Rindquist
Notary Public, Goodhue County, Minnesota
My commission expires Jan 31, 2010

SURVEYORS CERTIFICATION

I hereby certify that I have surveyed or directly supervised the survey of the property described on this plat; that I have prepared or directly supervised the preparation of this plat as THOREAU MOUNTAIN SECOND SUBDIVISION; that this plat is a correct representation of the boundary survey; that all mathematical data and labels are correctly designated on the plat; that all outside boundary monuments of the plat have been correctly set and that all other required monuments will be correctly set within one year of the recording of this plat; that as of the date of this certificate, all water boundaries and wet lands, as defined in Minnesota Statute 505.01, Subd. 3, are shown and labeled on the plat; and that all public ways are shown and labeled on the plat.

Dated this 11th day of June, 2008.

Mark A. Schoenfelder
Mark A. Schoenfelder, Land Surveyor
Minnesota License No. 42302

STATE OF MINNESOTA
COUNTY OF GOODHUE

The foregoing surveyor's certificate was acknowledged before me this 11th day of June, 2008 by Mark A. Schoenfelder, Land Surveyor

Bruno Rindquist
Notary Public, Goodhue County, Minnesota
My commission expires Jan 31, 2010

BOARD OF COMMISSIONERS FOR GOODHUE COUNTY, MINNESOTA

Approved by the County Board of Commissioners of Goodhue County, Minnesota, at their May 6th, 2008 County Board Meeting.

Mike McKey
Chair
Administrator

TOWNSHIP BOARD OF WACOUTA TOWNSHIP, MINNESOTA

Approved by the Wacouta Township Board on this 13th day of May, 2008.

Mike McKey
Mike McKey, Chairman, Township Board

GOODHUE COUNTY SURVEYOR

Pursuant to Chapter 389.09, laws of Minnesota, and Goodhue County Ordinance No. 2-78, this plat has been approved this 11th day of June, 2008.

Lisa M. Hanni
Lisa M. Hanni, Goodhue County Surveyor

GOODHUE COUNTY AUDITOR/TREASURER

I hereby certify that the taxes for the year 2008 on the land described on this plat as THOREAU MOUNTAIN SECOND SUBDIVISION have been paid and that no delinquent taxes are due and transfer entered this 11th day of June, 2008.

Carolyn Holmsten
Carolyn Holmsten, County Auditor/Treasurer

COUNTY RECORDER

Document Number 556727
File Number 355A

I hereby certify that this instrument was filed in the Office of the County Recorder for record on this 13th day of June, 2008, at 1:35 o'clock P.M. and was duly recorded in Goodhue County records.

Lisa M. Hanni
Lisa M. Hanni, County Recorder

GOODHUE COUNTY ATTORNEY

I hereby certify that proper evidence of title has been presented to and examined by me and I hereby approve this as to form and substance.

Carolyn Holmsten
Attorney for Goodhue County

QED
ENGINEERING, INC.
CIVIL ENGINEERS & LAND SURVEYORS

8301 BANDEL ROAD NW, SUITE 301
ROCHESTER, MN 55901
PH. 507-292-8743 FAX 507-292-8748
rochester@qedengineering.net

240 HARRISON ST
RED WING, MN 55066
PH. 651-388-2443 FAX 651-388-2225
redwing@qedengineering.net