

CANNON RIVER BLUFFS FIFTH ADDITION

KNOW ALL MEN BY THESE PRESENTS: That Red Wing II Partnership, LLC, a Minnesota Limited Liability Company, owner and proprietor, and Community Bank Corporation, a Minnesota Corporation, mortgagee of the following described property situated in the County of Goodhue and State of Minnesota, to wit:

Lots 6 - 9, and Lot 17, all in Block 3, Cannon River Bluffs Second Addition, City of Red Wing, Goodhue County, Minnesota.

Have caused the same to be surveyed and platted as CANNON RIVER BLUFFS FIFTH ADDITION and do hereby donate and dedicate to the public for public use forever the easements as shown on the plat for drainage and utility purposes only.

In witness whereof said Red Wing II Partnership, LLC, a Minnesota Limited Liability Company, has caused these presents to be signed by its proper officers this 9th day of September, 2008.

Red Wing II Partnership, LLC
By Mark M. Gergen
Mark M. Gergen, President
By Lynn M. Giovannelli
Lynn M. Giovannelli, Secretary

STATE OF MINNESOTA
COUNTY OF Hennepin
The foregoing instrument was acknowledged before me this 9th day of September, 2008, by Mark M. Gergen, Chief Manager of Red Wing II Partnership, LLC, and Lynn M. Giovannelli, Secretary of Red Wing II Partnership, LLC.

Jackie De Larson
Notary Public, Hennepin County, Minnesota
My Commission Expires JAN. 31, 2011

In witness whereof said Community Bank Corporation, a Minnesota Corporation has caused these presents to be signed by its proper officer this 9th day of September, 2008.

Community Bank Corporation
By William A. Traxler
William A. Traxler, President, Chanhassen Office

STATE OF MINNESOTA
COUNTY OF Hennepin
The foregoing instrument was acknowledged before me this 9th day of September, 2008, by William A. Traxler, President of Community Bank Corporation, Chanhassen Office.

Thomas J. Hughes IV
Notary Public, Hennepin County, Minnesota
My Commission Expires 1.31.2010

I hereby certify that I have surveyed and platted the property described on this plat as CANNON RIVER BLUFFS FIFTH ADDITION; that this plat is a correct representation of the boundary survey; that all mathematical data and labels are correctly designated on the plat; that all monuments depicted on the plat have been correctly set, that all water boundaries and wetlands as defined in MS section 505.01, Subd. 3 existing as of the date of this certification are shown and labeled on the plat; and that all public ways are shown and labeled on the plat.

Thomas J. O'Meara
Thomas J. O'Meara, Land Surveyor
Minnesota License No. 46167

STATE OF MINNESOTA
COUNTY OF DAKOTA
The foregoing Surveyor's Certificate was acknowledged before me this 8th day of SEPTEMBER, 2008, by Thomas J. O'Meara, Minnesota License No. 46167.

Jeffrey L. Bohlen
Notary Public, DAKOTA County, Minnesota.
My commission expires JANUARY 31, 2012

Pursuant to Chapter 389.09, laws of Minnesota and Goodhue County Ordinance No. 2-78, this plat has been approved this 9 day of September, 2008.

Lisa M. Hanni
Lisa M. Hanni
Goodhue County Surveyor

Approved by the Planning Commission of the City of Red Wing, Minnesota, at a regular meeting thereof, on the 19th day of August, 2008.

Roseanne Shood Chairman

We do hereby certify that on the 8th day of September, 2008, the City Council of Red Wing, Minnesota approved this plat by resolution and is in compliance with the provisions of Minnesota Statutes Section 505.03, Subdivision 2.

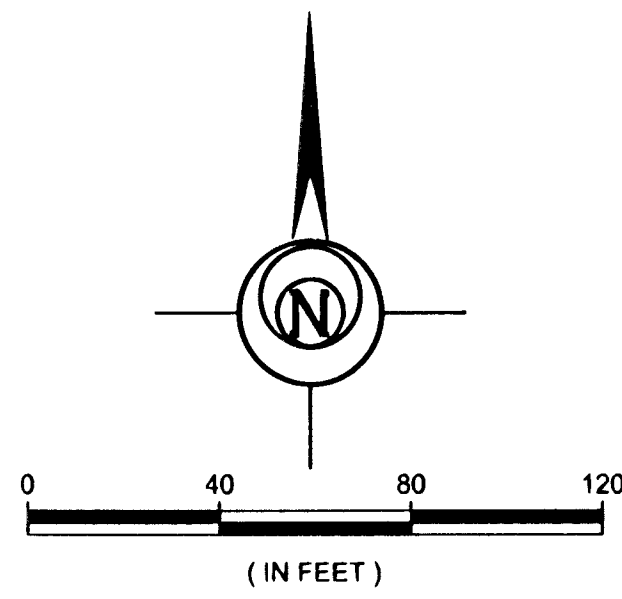
Donna Deppa Mayor
Walter Deppa Clerk

I do hereby certify that the taxes for the year 2008 for the land described on this plat as CANNON RIVER BLUFFS FIFTH ADDITION have been paid and no delinquent taxes due and transfer entered on this 9th day of September, 2008.

By Carolyn Holmsten
Carolyn Holmsten
County Treasurer-Auditor, Goodhue County, Minnesota

I hereby certify that this instrument was filed in the office of the County Recorder for record this 10th day of September, 2008, at 8:00 o'clock A.M., and was duly recorded as Document No. 559103. File # 356B

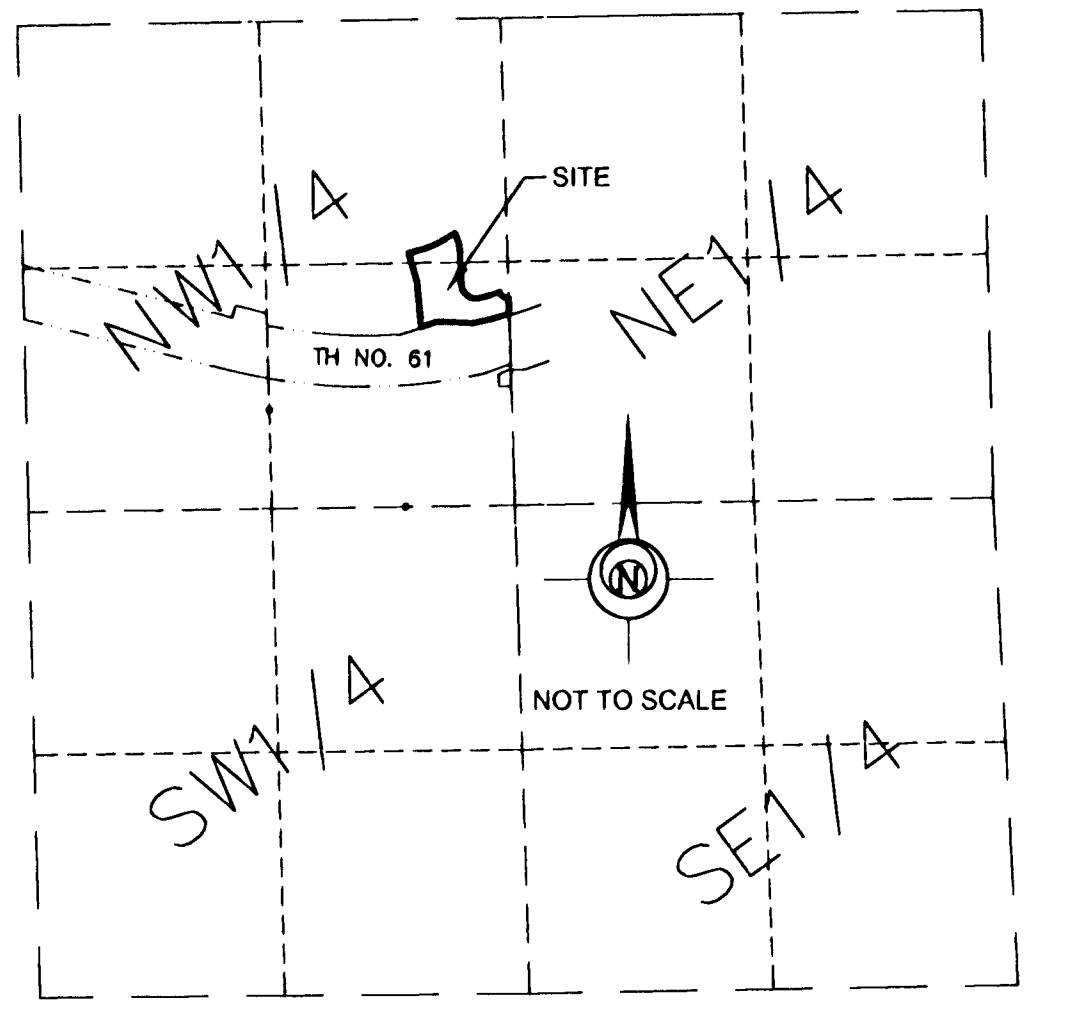
Ed Heine
County Recorder, Goodhue County, Minnesota



THE NORTH LINE OF LOT 6, BLOCK 3, CANNON RIVER BLUFFS SECOND ADDITION IS ASSUMED TO BEAR S88°20'31"W.

- DENOTES IRON PIPE MONUMENT FOUND.
- DENOTES IRON PIPE MONUMENT SET.

LOCATION MAP
SECTION 28, TOWNSHIP 113, RANGE 15



Bohlen
Surveying & Associates

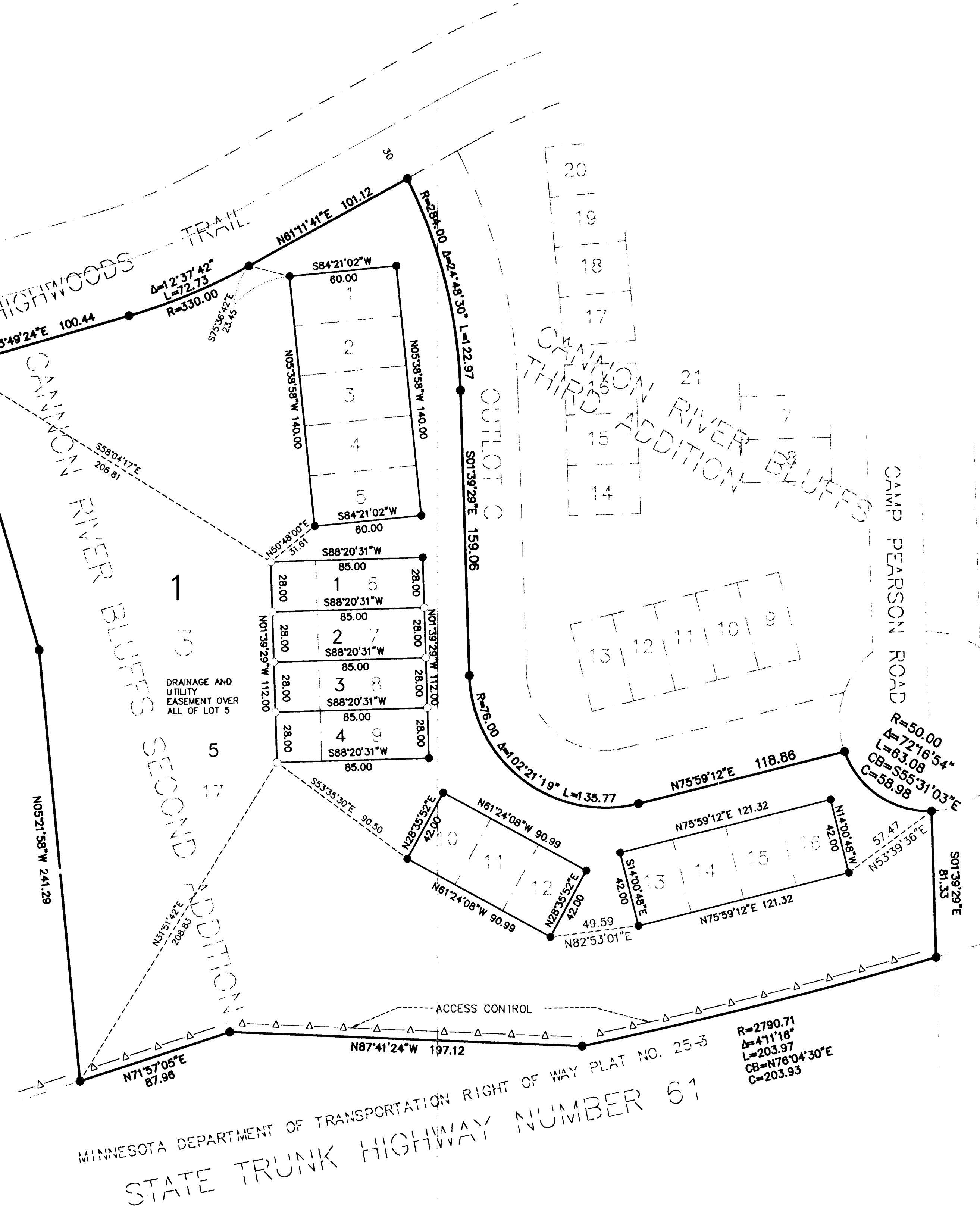
31432 Foliage Avenue
Northfield, MN 55057
Phone: (507) 645-7708
Fax: (507) 645-7709

1584 Cliff Road E
Burnsville, MN 55337
Phone: (952) 895-3212
Fax: (952) 895-3209



BSA

357A



MINNESOTA DEPARTMENT OF TRANSPORTATION RIGHT OF WAY PLAT NO. 25-3
STATE TRUNK HIGHWAY NUMBER 61

356B 357A