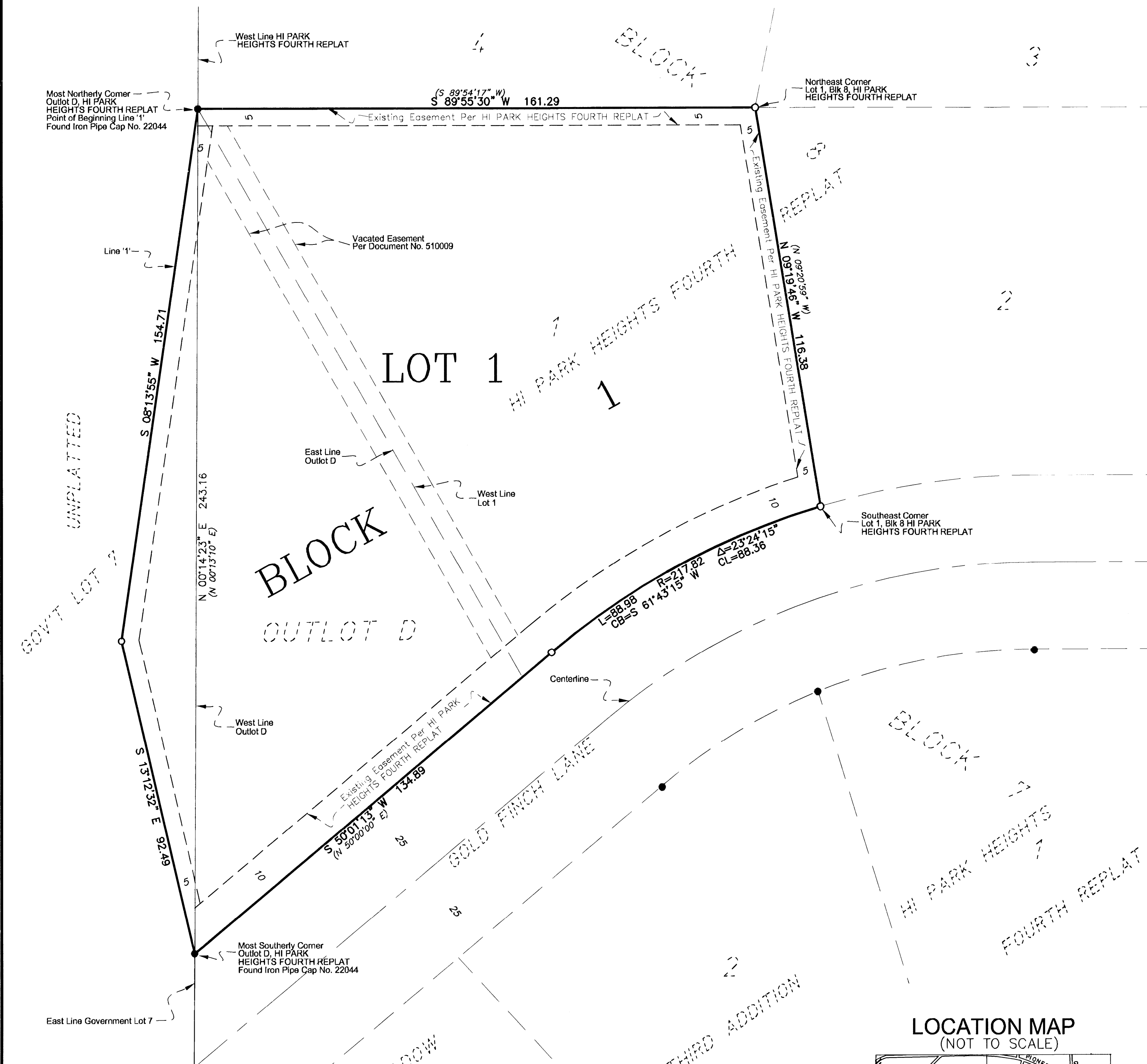
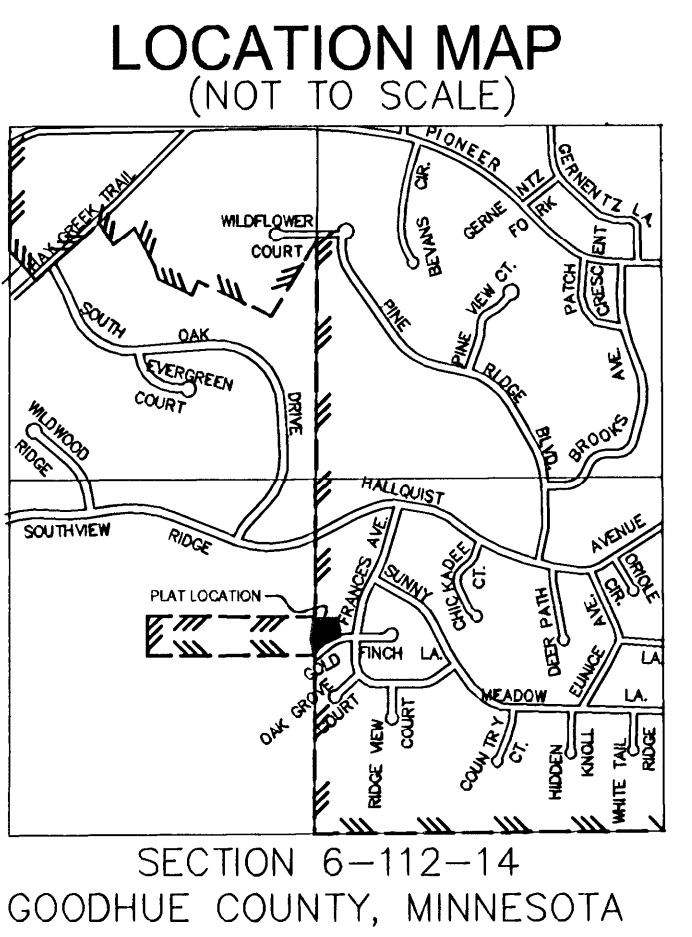
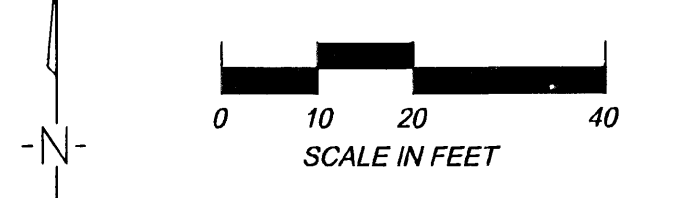


DIETZ FIRST SUBDIVISION



LEGEND

- Denotes a 1/2 Inch x 15 Inch Iron Pipe set with a Plastic Cap Stamped 42302 (Unless Otherwise Described)
- Denotes an Iron Monument Found with a Plastic Cap Stamped 22044 (Unless Otherwise Described)
- (East) Denotes Bearing as Shown on HI PARK HEIGHTS FOURTH REPLAT



INSTRUMENT OF DEDICATION

KNOW ALL PERSONS BY THESE PRESENTS: That Brian J Gadient, Kevin Dietz and Linda Dietz, owners and proprietors, White Rock Bank, a Minnesota Corporation and Merchants Bank, a National Association, Winona, mortgagees, of the following described property situated in the County of Goodhue, State of Minnesota, to wit:

That part of Government Lot 7, Section 6, Township 112 North, Range 14 West, Goodhue County, Minnesota, described as follows:

Beginning at the most southerly corner of Outlot D, HI PARK HEIGHTS FOURTH REPLAT, according to the recorded plat on file and of record in the Office the County Recorder, Goodhue County, Minnesota; thence North 00 degrees 14 minutes 23 seconds East, on an assumed bearing along the west line of said Outlot D, a distance of 243.16 feet to the most northerly corner of said Outlot D; thence South 08 degrees 13 minutes 55 seconds West a distance of 154.71 feet; thence South 13 degrees 12 minutes 32 seconds East a distance of 92.49 feet to the point of beginning.

AND

Lot 1 and Outlot D, Block 8, HI PARK HEIGHTS FOURTH REPLAT, according to the recorded plat thereof, on file and of record in the Office of the County Recorder, Goodhue County, Minnesota.

Has caused the same to be surveyed and platted as DIETZ FIRST SUBDIVISION and does hereby dedicate to the public for public use forever the public ways and also dedicates the easements for drainage and utility purposes only.

In witness whereof Kevin Dietz has hereunto set his hand this 19th day of DECEMBER, 2008

By Kevin Dietz
Kevin L Dietz

In witness whereof Linda Dietz has hereunto set her hand this 19th day of DECEMBER, 2008

By Linda Dietz
Linda Dietz

STATE OF MINNESOTA
COUNTY OF Goodhue

This foregoing instrument was acknowledged before me this 19th day of December, 2008, by Kevin L Dietz and Linda Dietz.

Kay Meltzer
Notary Public, Goodhue County, Minnesota
My commission expires 1-31-2013

In witness whereof Brian J Gadient has hereunto set his hand this 19th day of DECEMBER, 2008

By Brian J Gadient
Brian J Gadient

STATE OF MINNESOTA
COUNTY OF Goodhue

This foregoing instrument was acknowledged before me this 19th day of December, 2008, by Brian J Gadient.

Julie Lynn Eckstrom
Notary Public, Goodhue County, Minnesota
My commission expires January 31, 2009

In witness whereof said White Rock Bank, a Minnesota Corporation, has caused these present to be signed by its proper officer this 19th day of December, 2008

By Brett Elford
Brett Elford, President

STATE OF MINNESOTA
COUNTY OF Goodhue

This foregoing instrument was acknowledged before me this 19th day of December, 2008, by Brett Elford, President of White Rock Bank, a Minnesota Corporation, on behalf of the bank.

Julie Lynn Eckstrom
Notary Public, Goodhue County, Minnesota
My commission expires January 31, 2009

In witness whereof said Merchants Bank, a National Association, Winona, has caused these present to be signed by its proper officer this 19th day of DECEMBER, 2008

By Michael Grove
Michael Grove, Market President

STATE OF MINNESOTA
COUNTY OF Goodhue

This foregoing instrument was acknowledged before me this 19th day of December, 2008, by Michael Grove, Market President of Merchants Bank, a National Association, Winona, on behalf of the bank.

Kay Meltzer
Notary Public, Goodhue County, Minnesota
My commission expires 1-31-2013

SURVEYORS CERTIFICATION

I hereby certify that I have surveyed or directly supervised the survey of the property described on this plat; that I have prepared or directly supervised the preparation of this plat as DIETZ FIRST SUBDIVISION; that this plat is a correct representation of the boundary survey; that all mathematical data and labels are correctly designated on the plat; that all outside boundary monuments of the plat have been correctly set and that all other required monuments will be correctly set within one year of the recording of this plat; that as of the date of this certificate, all water boundaries and wet lands, as defined in Minnesota Statute 505.01, Subd. 3, are shown and labeled on the plat; and that all public ways are shown and labeled on the plat.

Dated this 19th day of Dec, 2008.

Mark A. Schoenfelder
Mark A. Schoenfelder, Land Surveyor
Minnesota License No. 42302

STATE OF MINNESOTA
COUNTY OF GOODHUE

The foregoing surveyor's certificate was acknowledged before me this 19th day of Dec, 2008 by Mark A. Schoenfelder, Land Surveyor

Beverly Sundquist
Notary Public, Goodhue County, Minnesota
My commission expires Jan 31 2010

PLANNING COMMISSION OF THE CITY OF RED WING, MINNESOTA

Approved by the Planning Commission of the City of Red Wing, Minnesota, at a regular meeting thereof, on the 18th day of November, 2008

Roseanna Grosso
Roseanna Grosso, Chair

CITY COUNCIL OF THE CITY OF RED WING, MINNESOTA

We do hereby certify that on the 22 day of December, 2008 the City Council of Red Wing, Minnesota, approved this plat

Dorina Dumroer
Dorina Dumroer, Mayor
Kathy Johnson
Kathy Johnson, City Clerk

GOODHUE COUNTY SURVEYOR

Pursuant to Chapter 389.09, laws of Minnesota, and Goodhue County Ordinance No. 2-78, this plat has been approved this 24 day of December, 2008

Lisa M. Hanni
Lisa M. Hanni, Goodhue County Surveyor

GOODHUE COUNTY AUDITOR/TREASURER

I hereby certify that the taxes for the year 2007 on the land described on this plat as DIETZ FIRST SUBDIVISION have been paid and that no delinquent taxes are due and transfer entered this 23 day of December, 2008

Carolyn Holmsted
Carolyn Holmsted, County Auditor/Treasurer

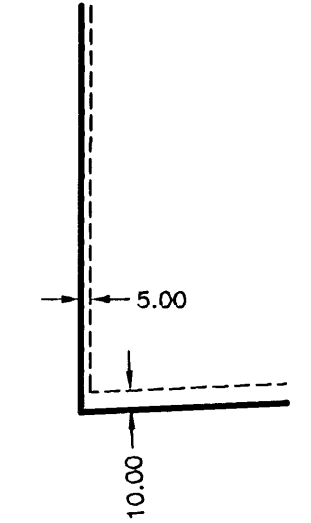
COUNTY RECORDER

Document Number 561785
File Number 359A

I hereby certify that this instrument was filed in the Office of the County Recorder for record on this 27th day of Dec, 2008 at 10:00 o'clock A.M. and was duly recorded in Goodhue County records.

Lisa M. Hanni
Lisa M. Hanni, County Recorder

DRAINAGE AND UTILITY EASEMENTS ARE SHOWN THUS:



BEING 5 FEET IN WIDTH ADJOINING BLOCK LINES, AND 10 FEET IN WIDTH, ADJOINING STREET LINES AS SHOWN ON THE PLAT, UNLESS OTHERWISE INDICATED.

QED ENGINEERING, INC.
CIVIL ENGINEERS & LAND SURVEYORS

6301 BANDEL ROAD NW, SUITE 301
ROCHESTER, MN 55901
PH. 507-292-8743 FAX 507-292-8746
rochester@qedengineering.net

240 HARRISON STREET
RED WING, MN 55969
PH. 651-388-2443 FAX 651-388-5236
redwing@qedengineering.net