

# BUSINESS PARK NORTH FOURTH REPLAT

KNOW ALL MEN BY THESE PRESENTS: That the Cannon Falls Economic Development Authority, a public body corporate and politic of the State of Minnesota, fee owner, of the following described property situated in the County of Goodhue, State of Minnesota, to wit:

Lot 1, Block 1, BUSINESS PARK NORTH THIRD REPLAT, according to the recorded plat thereof, Goodhue County, Minnesota.

AND

That part of Outlot A, BUSINESS PARK NORTH THIRD REPLAT, according to the recorded plat thereof, Goodhue County, Minnesota, lying east of the following described line: Beginning at the northwest corner of Lot 1, Block 1, said BUSINESS PARK NORTH THIRD REPLAT; thence North 07 degrees 27 minutes 29 seconds West along the east line of the northern natural gas company pipeline easement per document number 334349 a distance of 330.77 feet; thence North 01 degree 21 minutes 53 seconds West along said east line of pipeline easement 278.27 feet to the north line of said Outlot A and said line there terminating.

AND

That part of Outlot A, BUSINESS PARK NORTH THIRD REPLAT, according to the recorded plat thereof, Goodhue County, Minnesota, described as follows: Beginning at the southwest corner of Lot 1, Block 1, BUSINESS PARK NORTH THIRD REPLAT, according to the recorded plat thereof, Goodhue County, Minnesota; thence South 89 degrees 26 minutes 11 seconds West along the south line of said Outlot A a distance of 183.82 feet; thence westerly 209.14 feet along said south line of Outlot A along a tangential curve concave to the south, radius of 540.00 feet and a central angle of 22 degrees 11 minutes 26 seconds; thence easterly 178.62 feet along a nontangential curve concave to the south, radius of 372.00 feet, central angle of 27 degrees 30 minutes 44 seconds and a chord that bears North 70 degrees 13 minutes 32 seconds East; thence North 00 degrees 56 minutes 53 seconds West 401.70 feet; thence North 89 degrees 27 minutes 23 seconds East 216.41 feet to the west line of said Lot 1, Block 1, BUSINESS PARK NORTH THIRD REPLAT; thence South 07 degrees 27 minutes 29 seconds East along said west line 31.10 feet; thence South 01 degree 46 minutes 40 seconds East along said west line 184.08 feet; thence South 00 degrees 23 minutes 15 seconds East along said west line 204.93 feet to the point of beginning.

Has caused the same to be surveyed and platted as BUSINESS PARK NORTH FOURTH REPLAT and does hereby donate and dedicate to the public, for public use forever the avenue, drive and also dedicate the drainage and utility easements as shown on the plat.

In witness whereof the Cannon Falls Economic Development Authority, a public body corporate and politic of the State of Minnesota, has caused these presents to be signed by its proper officers this 4<sup>th</sup> day of December, 2009.

CANNON FALLS ECONOMIC DEVELOPMENT AUTHORITY

*John D. Anderson*  
John D. Anderson, President

*Aaron S. Reeves*  
Aaron S. Reeves, Secretary and City Administrator

State of Minnesota  
County of Goodhue

The foregoing instrument was acknowledged before me this 4<sup>th</sup> day of December, 2009, by John D. Anderson, President and Aaron S. Reeves, Secretary and City Administrator of the Cannon Falls Economic Development Authority, a public body corporate and politic of the State of Minnesota, on behalf of said Authority.

*Saram Peer*  
Notary Public, Goodhue County, Minnesota  
My Commission Expires January 31, 2010



I hereby certify: That I have surveyed or directly supervised the survey of the property described on this plat; that I have prepared or directly supervised the preparation of this plat as BUSINESS PARK NORTH FOURTH REPLAT; that this plat is a correct representation of the boundary survey; that all mathematical data and labels are correctly designated on the plat; that all monuments depicted on the plat have been correctly set; that as of the date of this certificate, all water boundaries and wetlands, as defined in Minnesota Statutes 505.01, Subd. 3, are shown and labeled on the plat; and that all public ways are shown and labeled on the plat.

Dated this 30<sup>th</sup> day of NOVEMBER, 2009.

*V. Richard Samuelson*  
V. Richard Samuelson  
Minnesota License No. 16998

State of Minnesota  
County of Goodhue

The foregoing instrument was acknowledged before me this 30<sup>th</sup> day of November, 2009, by V. Richard Samuelson, Land Surveyor.

*Connie K. Frandrup*  
Notary Public, Goodhue County, Minnesota  
My Commission Expires 1-31-2010



Reviewed by the Planning Commission of the City of Cannon Falls, Minnesota this 12<sup>th</sup> day of October, 2009.

SIGNED: *Michael Rapp*, Chairman ATTEST: *Aaron S. Reeves*, Secretary

Approved by the City of Cannon Falls, Minnesota this 15<sup>th</sup> day of October, 2009.

SIGNED: *Tom Kelly*, Mayor ATTEST: *Aaron S. Reeves*, City Clerk

Taxes payable in the year 2009 on the land herein described have been paid, there are no delinquent taxes and transfer has been entered this 9<sup>th</sup> day of December, 2009.

*Candice Johnson* By: *Da Silva*  
Goodhue County Auditor/ Treasurer Deputy

Pursuant to Chapter 389.09, laws of Minnesota, and Goodhue County Ordinance No. 2-78, this plat has been approved this 10<sup>th</sup> day of December, 2009.

*Emilia*  
Goodhue County Surveyor

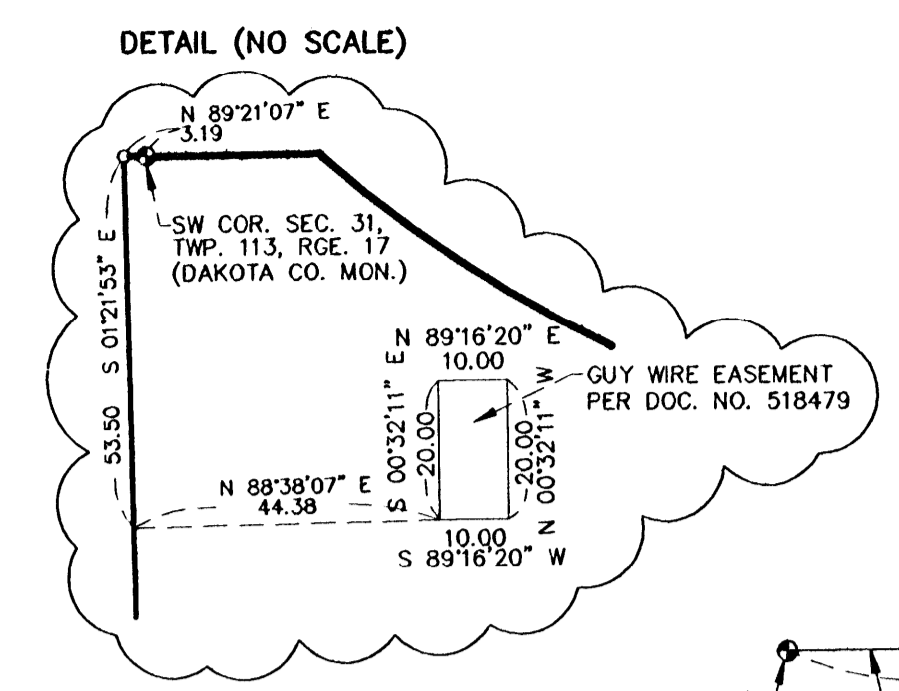
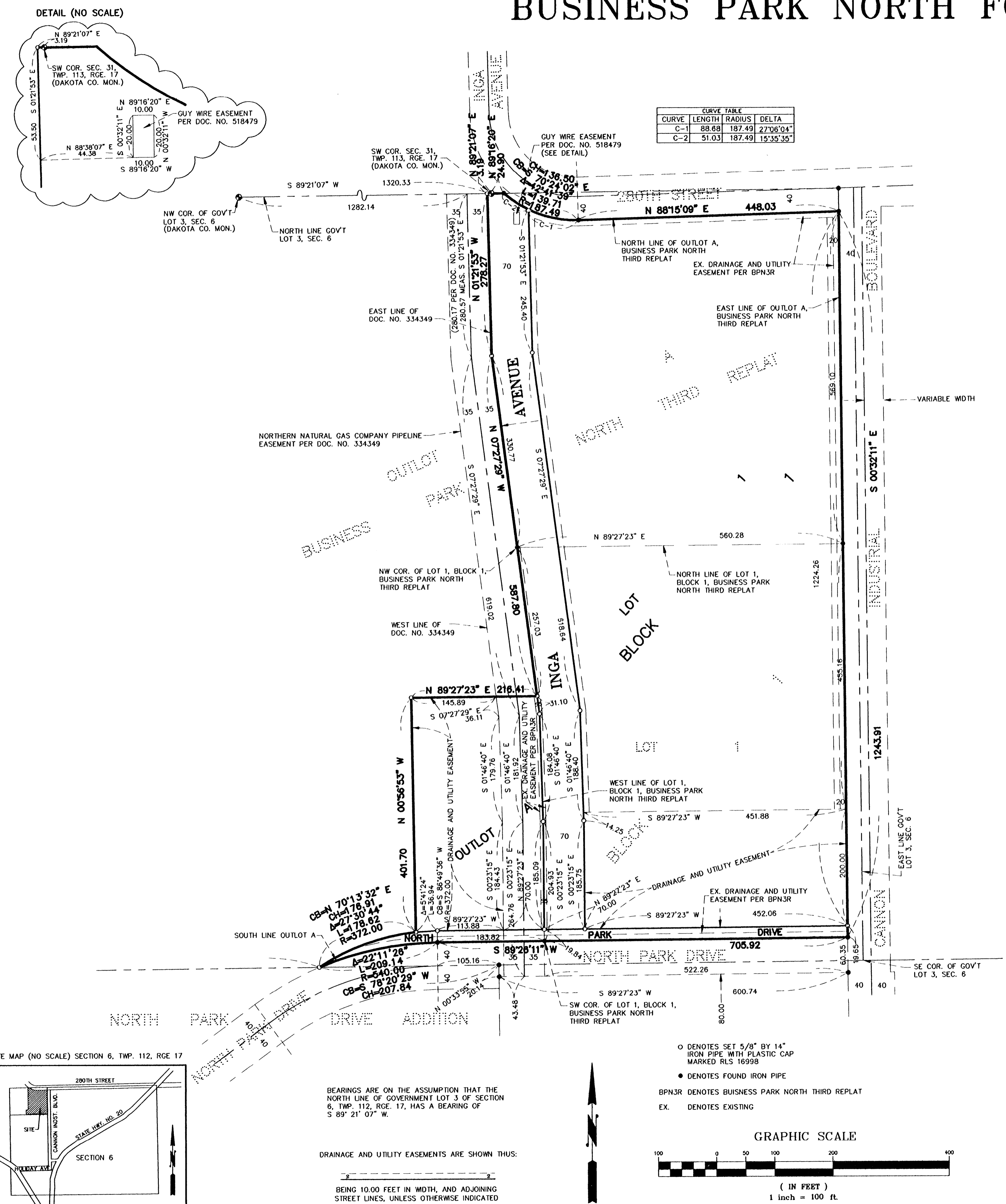
I hereby certify that the within instrument was filed in this office for record this 10<sup>th</sup> day of December, 2009 at 9:00 o'clock Am and was duly recorded as document number 573,128, file number 361 B.

*Emilia*  
Goodhue County Recorder

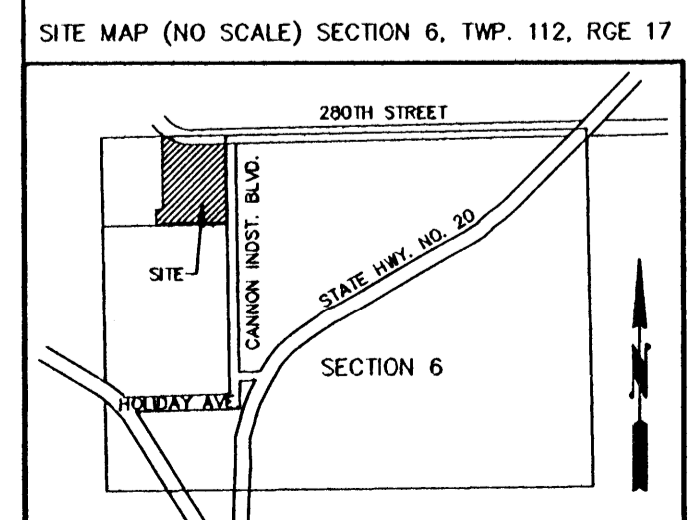
PHONE: (507) 263-3274

**SAMUELSON SURVEYING INC.**

1103 West Main Street Cannon Falls, MN. 55009 V. Richard Samuelson Registered Land Surveyor



CURVE TABLE			
CURVE	LENGTH	RADIUS	DELTA
C-1	88.88	187.49	27°06'04"
C-2	51.03	187.49	15°35'35"



BEARINGS ARE ON THE ASSUMPTION THAT THE NORTH LINE OF GOVERNMENT LOT 3 OF SECTION 6, TWP. 112, RCE. 17, HAS A BEARING OF S 89° 21' 07" W.

DRAINAGE AND UTILITY EASEMENTS ARE SHOWN THUS: BEING 10.00 FEET IN WIDTH, AND ADJOINING STREET LINES, UNLESS OTHERWISE INDICATED

- DENOTES SET 5/8" BY 14" IRON PIPE WITH PLASTIC CAP MARKED RLS 16998
- DENOTES FOUND IRON PIPE
- BPN3R DENOTES BUSINESS PARK NORTH THIRD REPLAT
- EX. DENOTES EXISTING

