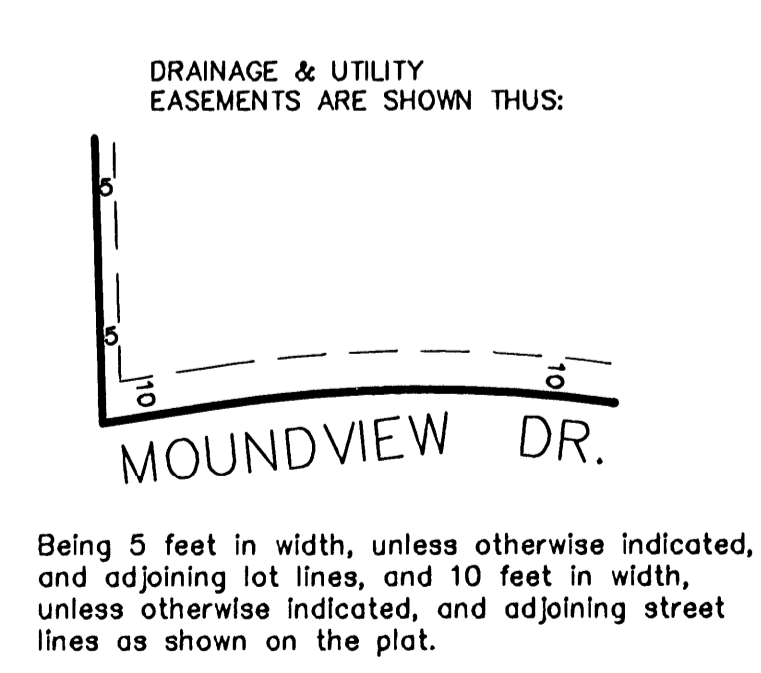
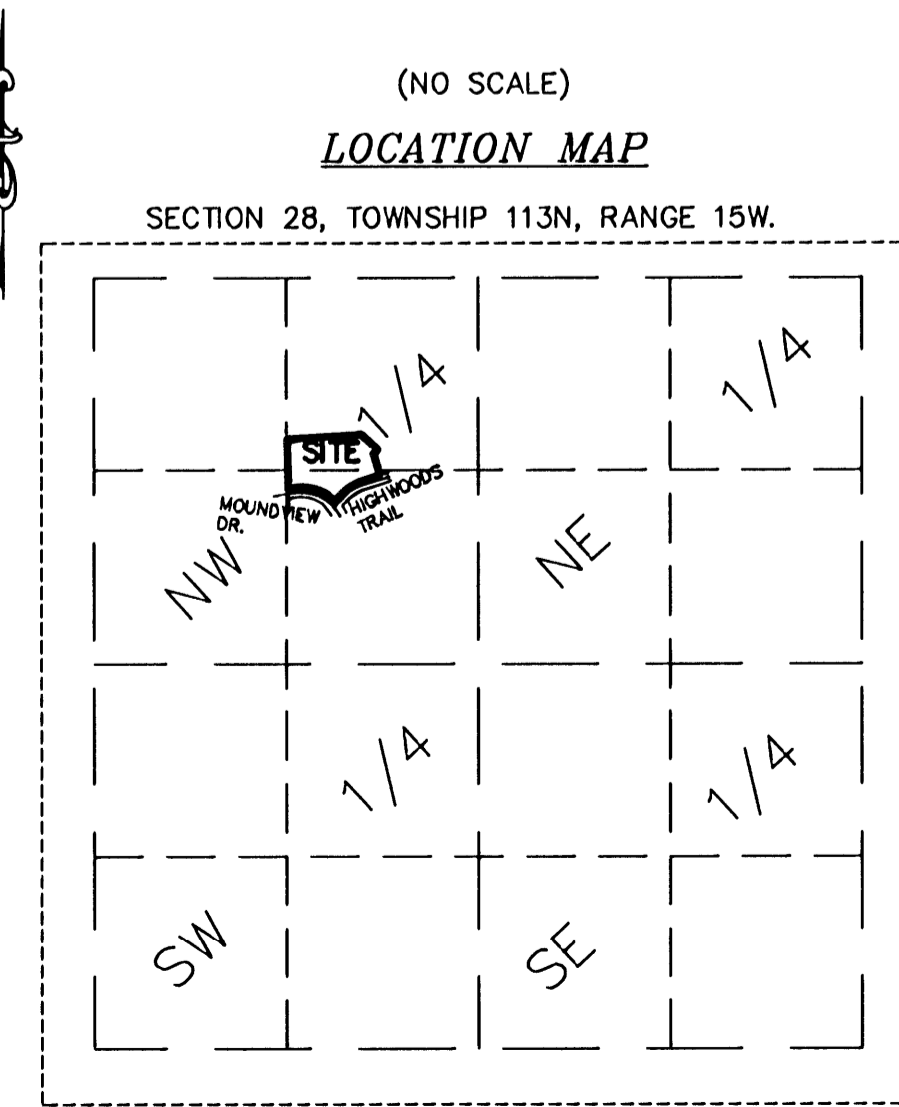
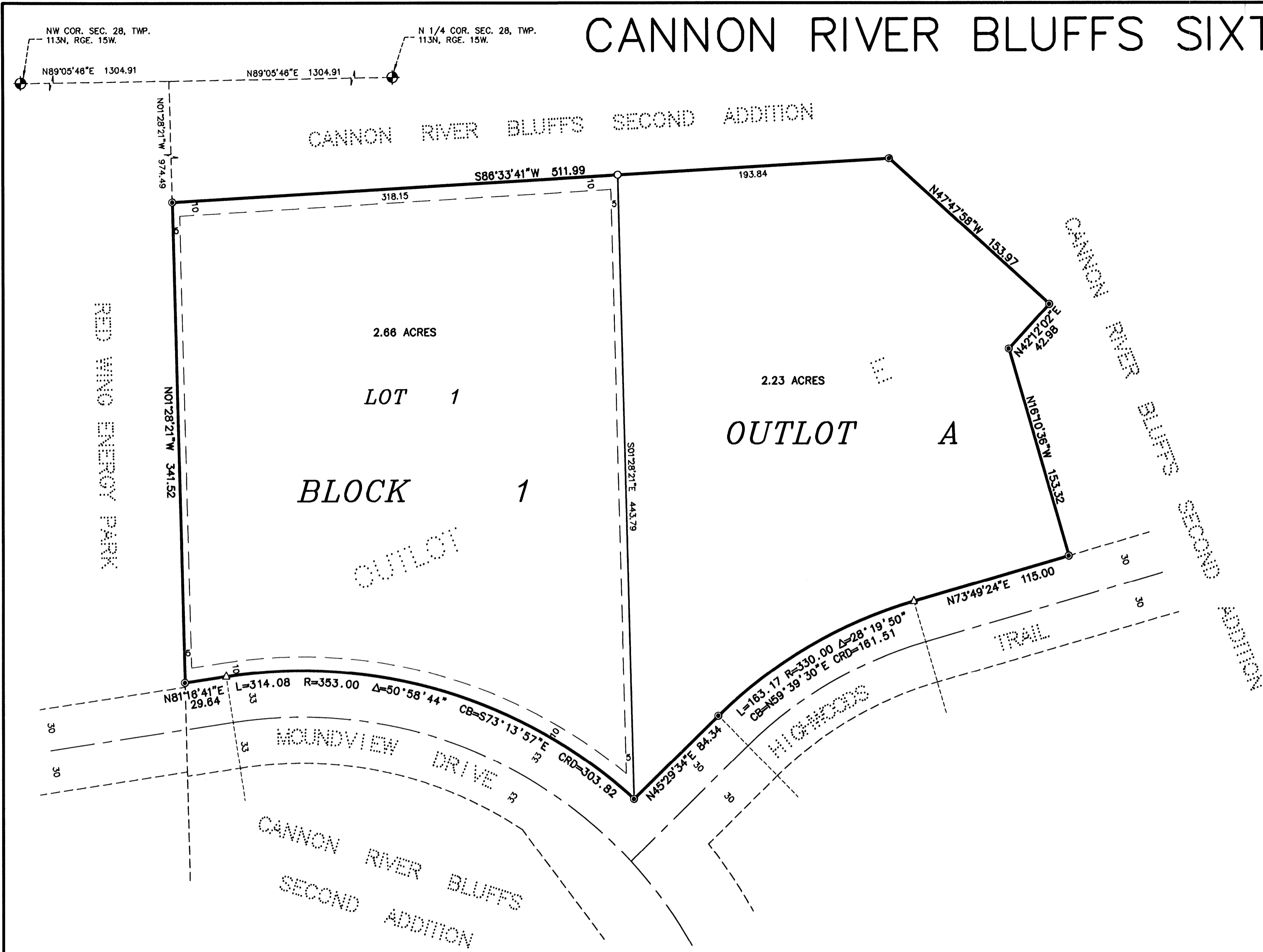
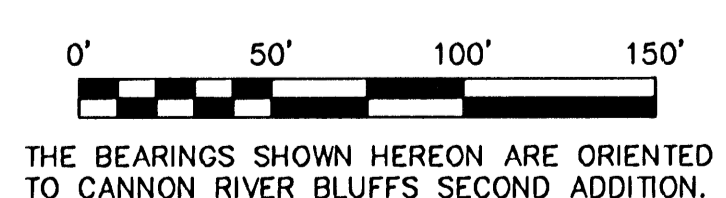


CANNON RIVER BLUFFS SIXTH ADDITION



- ◆ DENOTES A GOODHUE COUNTY MONUMENT.
- DENOTES A PLACED 1" BY 18" IRON PIPE HAVING A PLASTIC CAP BEARING LAND SURVEYOR LICENSE NO. 15473.
- DENOTES FOUND IRON MONUMENT.
- △ DENOTES FOUND PK NAIL.



KNOW ALL PERSONS BY THESE PRESENTS: That Community Bank Corporation, a Minnesota banking corporation, owner and proprietor of the following described property to wit:

Outlot E, CANNON RIVER BLUFFS SECOND ADDITION, according to the recorded plat thereof, on file in the office of the County Recorder, Goodhue County, Minnesota.

Has caused the same to be surveyed and platted as CANNON RIVER BLUFFS SIXTH ADDITION and does hereby dedicate to the public for public use forever the easements as shown on this plat for drainage and utility purposes only.

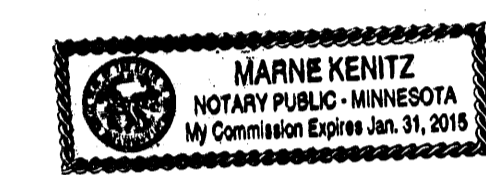
In witness whereof said Community Bank Corporation, a Minnesota banking corporation, has caused these presents to be signed by its proper officers this 15 day of June, 2010.

Jean Savage its Personal Banker and [Signature] its Pres. Chen

STATE OF MINNESOTA Goodhue
COUNTY OF Goodhue

The foregoing instrument was acknowledged before me this 15 day of June, 2010, by Jean Savage its Personal Banker and William A. Traylor its Pres. Chen of Community Bank Corporation, a Minnesota banking corporation, on behalf of said corporation.

Marne Kenitz
Notary Public Goodhue County, Minnesota
My Commission Expires 1-31-2015



I hereby certify: That I have surveyed or directly supervised the survey of the property described on this plat; that I have prepared or directly supervised the preparation of this plat as CANNON RIVER BLUFFS SIXTH ADDITION; that this plat is a correct representation of the boundary survey; that all mathematical data and labels are correctly designated on the plat; that all monuments depicted on the plat have been correctly set; that as of the date of this certification, all water boundaries and wetlands, as defined in Minnesota Statutes 505.01, subd. 3, are shown and labeled on the plat; and that all public ways are shown and labeled on the plat.

Alan K. Scofield
Alan K. Scofield, Land Surveyor
Minnesota License Number 15473

STATE OF MINNESOTA
COUNTY OF GOODHUE

The foregoing instrument was acknowledged before me this 13th day of May, 2010, by Alan K. Scofield, Land Surveyor.

Teresa Lee Vossen
Notary Public Goodhue County, Minnesota
My Commission Expires January 31, 2015



Approved by the City Council of Red Wing, Minnesota, this 26th day of April, 2010.
SIGNED: [Signature] City Clerk [Signature] Mayor

Approved by the Planning Commission of the City of Red Wing, Minnesota, this 20th day of April, 2010.
Signed: [Signature] Chairman

Taxes payable in the year 2010 on the land herein described have been paid, there are no delinquent taxes and transfer has been entered this 15th day of June, 2010.

Carolyn Holmsten
Goodhue County Auditor/Treasurer
By [Signature] Deputy

Pursuant to Chapter 389.09, laws of Minnesota, and Goodhue County Ordinance No. 2-78, this plat has been approved this 16th day of June, 2010.
[Signature]
Goodhue County Surveyor

I hereby certify that the within instrument was filed in this office for record this 16th day of June, 2010, at 11:00am and was duly recorded as document number 576840 file number 362B.
[Signature]
Goodhue County Recorder

JOHNSON & SCOFIELD INC.
SURVEYING AND ENGINEERING
1203 MAIN ST. - RED WING - MN 55066 (651) 388-1558
626 JEFFERSON AVENUE
WABASHA - MN 55981 (651) 686-3244