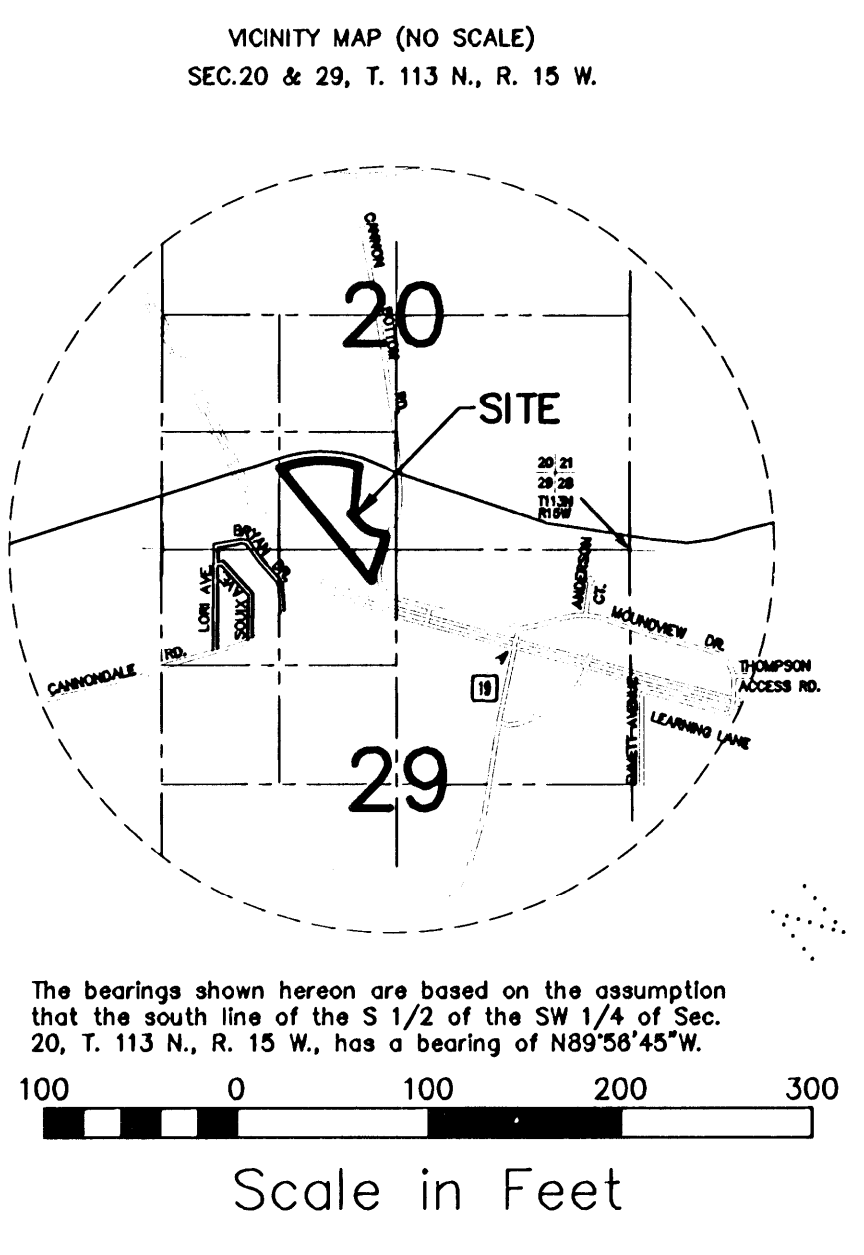
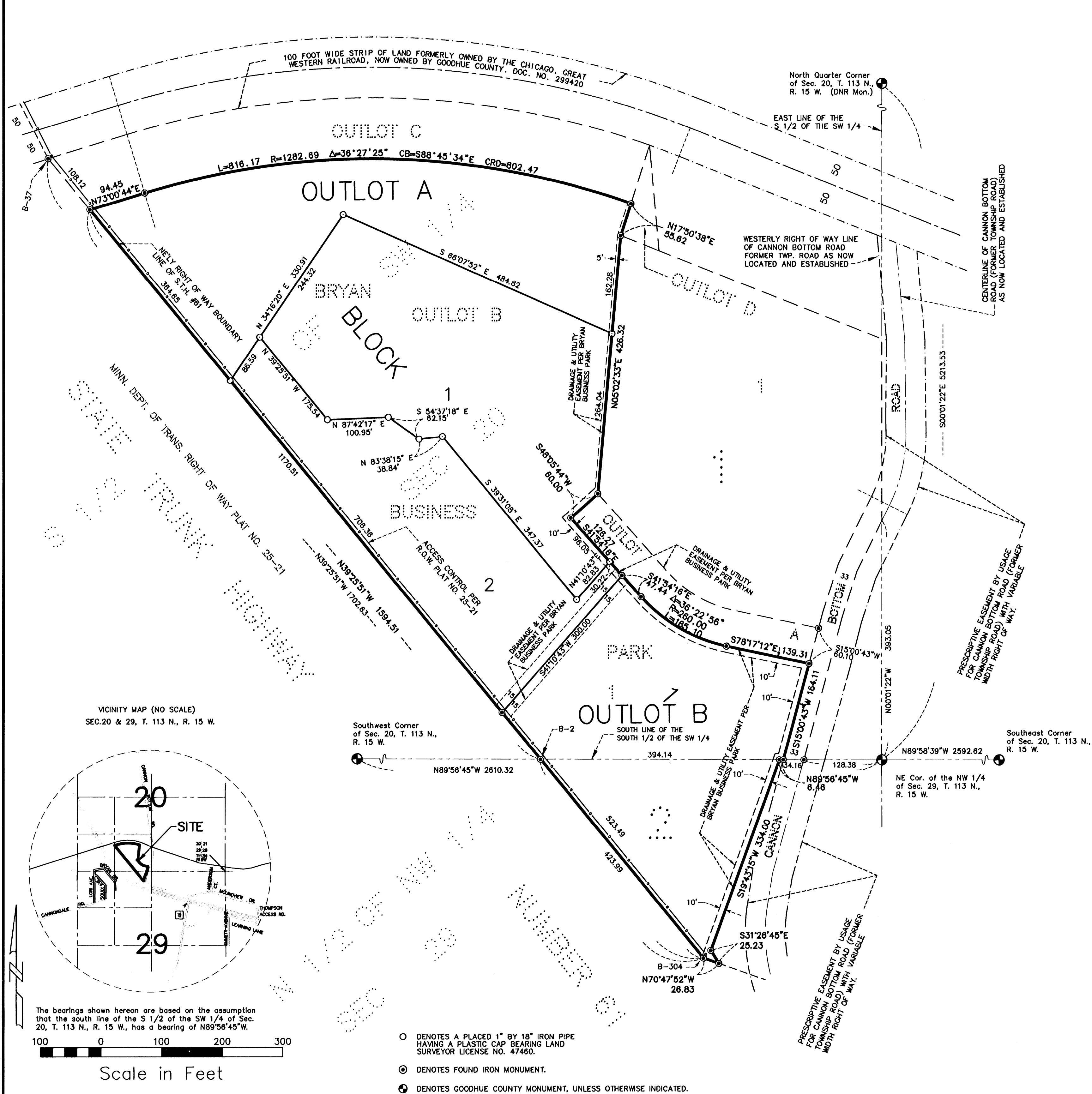


BRYAN BUSINESS PARK SECOND ADDITION



KNOW ALL PERSONS BY THESE PRESENTS: That Red Wing Grain, LLC, a Minnesota Limited Liability Company, owner and proprietor of the following described property to wit:

Lot 1, Block 2 and Outlot B, BRYAN BUSINESS PARK, according to the recorded plat thereof, on file in the office of the County Recorder, Goodhue County, Minnesota.

Has caused the same to be surveyed and platted as BRYAN BUSINESS PARK SECOND ADDITION.

In witness whereof said Red Wing Grain, LLC, a Minnesota Limited Liability Company, has caused these presents to be signed by its proper officers this 25th day of April, 2011.

Signed: Red Wing Grain, LLC
By Jim Larson its General Manager and _____ its _____

STATE OF MINNESOTA
COUNTY OF Goodhue
The foregoing instrument was acknowledged before me this 25th day of April, 2011, by Jim Larson its General Manager and _____ its _____ of Red Wing Grain, LLC, a Limited Liability Company, on behalf of said company.

Kay Meltzer
Notary Public Goodhue County, Minnesota
My Commission Expires January 31, 2013

I hereby certify:
That I have surveyed or directly supervised the survey of the property described on this plat; that I have prepared or directly supervised the preparation of this plat as BRYAN BUSINESS PARK SECOND ADDITION; that this plat is a correct representation of the boundary survey; that all mathematical data and labels are correctly designated on the plat; that all monuments depicted on the plat have been correctly set; that as of the date of this certification, all water boundaries and wetlands, as defined in Minnesota Statutes 505.01, subd. 3, are shown and labeled on the plat; and that all public ways are shown and labeled on the plat.

Marcus S. Johnson
Land Surveyor
Minnesota License Number 47460

STATE OF MINNESOTA
COUNTY OF GOODHUE
The foregoing instrument was acknowledged before me this 25th day of April, 2011, by Marcus S. Johnson, Land Surveyor.

Mitch Schofield
Notary Public Goodhue County, Minnesota
My Commission Expires January 31, 2016.

Approved by the City Council of Red Wing, Minnesota, this 13th day of December 20 10
SIGNED: Mark G. Johnson City Clerk John J. Johnson Mayor

Approved by the Planning Commission of the City of Red Wing, Minnesota, this 16th day of November 20 10
SIGNED: _____ Chairman

Taxes payable in the year 2011 on the land herein described have been paid, there are no delinquent taxes and transfer has been entered this 4th day of May 2011.

Cathy Johnson
Goodhue County Auditor/Treasurer
By David Witt Deputy

Pursuant to Chapter 389.09, laws of Minnesota, and Goodhue County Ordinance No. 2-78, this plat has been approved this 6th day of May, 2011.
Erin H. Erickson
Goodhue County Surveyor

I hereby certify that the within instrument was filed in this office for record this 10th day of May, 2011, at 2:30pm and was duly recorded as document number 585560 file number 367A
Erin H. Erickson
Goodhue County Recorder