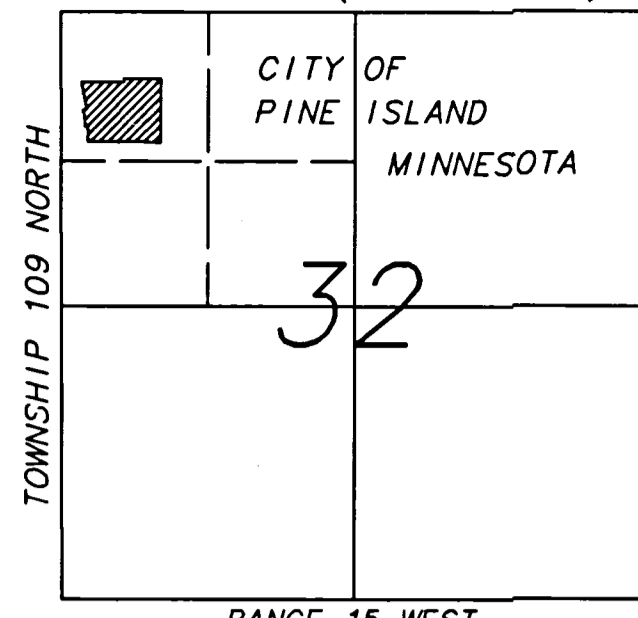


PINE HAVEN COMMUNITY

VICINITY MAP (NOT TO SCALE)



Drainage and Utility easement defined: D.U.E.
Utility easement defined: U.E.
An unobstructed easement for the construction and maintenance of all necessary overhead, underground, or surface public utilities including the rights to conduct drainage and trimming on said easement.



All bearings are in relation to the north line of the Northwest Quarter of Section 32, Township 109 North, Range 15 West, which has an assumed bearing of N89°51'49"E.

Monuments shown thus: ○ are set 1/2" galvanized rods with plastic cap bearing license no. 14888
Monuments shown thus: ● are found 1/2" pipes unless indicated otherwise.

I hereby certify that I have surveyed and platted the property described on this plat as PINE HAVEN COMMUNITY; that this is a correct representation of the survey; that all distances are correctly shown on the plat in feet and hundredths of a foot; that all monuments have been correctly placed in the ground as shown; that the outside boundary lines are correctly designated on the plat and that there are no wet lands as defined in Minnesota Statute 505.02, Subdivision 1, or public highways to be designated other than as shown.

Vincent A. Fangman
Vincent A. Fangman Minnesota License No. 14888

State of Minnesota
County of Goodhue

The surveyor's certificate was subscribed and sworn to before me a Notary Public, this 20 day of April, 2012, by Vincent A. Fangman, licensed Land Surveyor, Minnesota License No. 14888.

Jeanette M. McNeely
Notary Public, Goodhue County, Minnesota
My commission expires January 31, 2015

We do hereby certify that on the 20th day of March, 2012, the City Council of Pine Island, Minnesota, approved this plat.

Paul Perry, Mayor
Abraham Algodi, City Administrator
Approved by the Planning Commission of the City of Pine Island, Minnesota, at a meeting thereof, on the 13th day of March, 2012.

Commission Chairman, *Abraham Algodi*, City Administrator

Taxes payable in the year 2012 on the land herein described have been paid, there are no delinquent taxes and transfer has been entered this 20 day of May, 2012.

Goodhue County Auditor/Treasurer
By *Deputy*
Pursuant to Chapter 389.09, Minnesota Statutes and Goodhue County Ordinance No. 2-78, this plat has been approved this 20 day of May, 2012.

Goodhue County Surveyor

Reviewed by: *Neil Britte*, Date *4/12/12*
Pine Island City Engineer

I hereby certify that proper evidence of title has been presented to and examined by me, and I hereby approve this Plat as to form and execution.

Dated this 30th day of April, 2012.
Robert J. Damsky
Pine Island City Attorney

In witness whereof said Merchants Bank, National Association, mortgagee, has caused these present to be signed by its proper officer this 20 day of April, 2012.

By *Robert J. Damsky*, its U.D. & M. S. Mgr.

State of Minnesota
County of Winona

The foregoing instrument was acknowledged before me this 20 day of April, 2012, by *Robert J. Damsky*, its U.D. & M. S. Mgr. on behalf of the association.

Elizabeth M. Geldernick
Notary Public, Winona County, Minnesota
My commission expires Jan 31, 2014

In witness whereof said Pine Island Bank, 1/4-a Security State Bank of Pine Island, a Minnesota Corporation, mortgagee, has caused these present to be signed by its proper officer this 20 day of April, 2012.

By *James E. Hahn*, its President

State of Minnesota
County of Goodhue

The foregoing instrument was acknowledged before me this 20 day of April, 2012, by *James E. Hahn*, its President on behalf of the corporation.

Jeanette M. McNeely
Notary Public, Goodhue County, Minnesota
My commission expires January 31, 2015

In witness whereof said Rebecca A. Bjugan, 1/4-a Rebecca A. Archer, and Britt L. Bjugan, wife and husband, have hereunto set their hands this 20 day of April, 2012.

Rebecca A. Bjugan, *Britt L. Bjugan*
Rebecca A. Bjugan
Britt L. Bjugan

State of Minnesota
County of Goodhue

The foregoing instrument was acknowledged before me this 20 day of April, 2012, by *Rebecca A. Bjugan*, *1/4-a Rebecca A. Archer*, and *Britt L. Bjugan*, wife and husband.

Jeanette M. McNeely
Notary Public, Goodhue County, Minnesota
My commission expires January 31, 2015

In witness whereof said Pine Haven Kids Korner, Inc., a Non-Profit Minnesota Corporation, has caused these present to be signed by its proper officer this 20 day of April, 2012.

Charles Andrew Aho
Board Chairman

State of Minnesota
County of Goodhue

The foregoing instrument was acknowledged before me this 20 day of April, 2012, by *Charles Andrew Aho*, its Board Chairman on behalf of the corporation.

Charles Andrew Aho
Notary Public, Goodhue County, Minnesota
My commission expires 1/31/2015

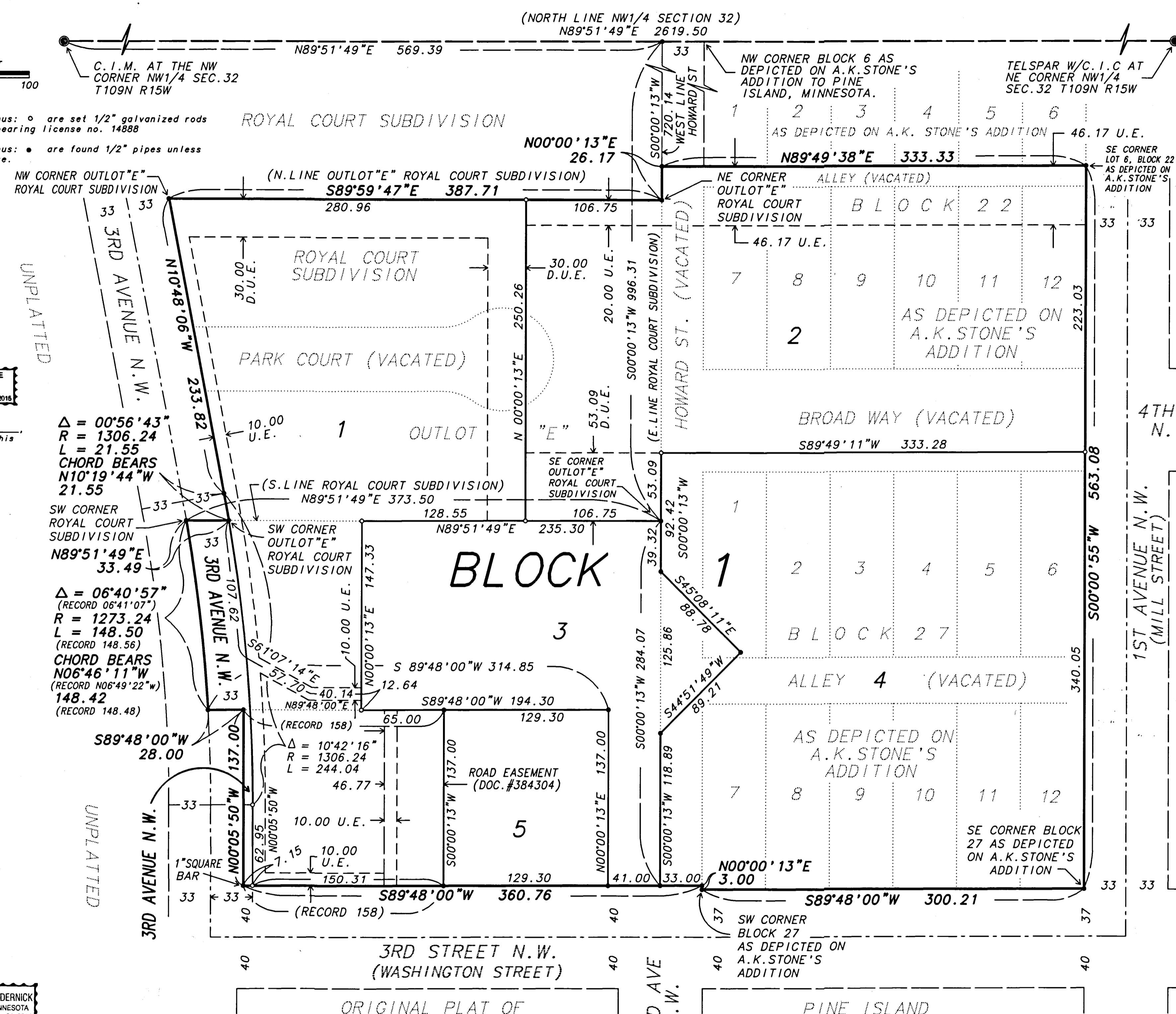
In witness whereof said City of Pine Island, a Minnesota Municipal Corporation, has caused these present to be signed by its proper officer this 20 day of April, 2012.

Paul Perry, Mayor
Abraham Algodi, City Administrator

State of Minnesota
County of Goodhue

The foregoing instrument was acknowledged before me this 20 day of April, 2012, by *Paul Perry*, Mayor, and *Abraham Algodi*, its City Administrator, City of Pine Island, on behalf of the corporation.

Charles Andrew Aho
Notary Public, Goodhue County, Minnesota
My commission expires 1/31/2015



KNOW ALL MEN BY THESE PRESENT: Pine Haven, Inc., 1/4-a Pine Haven Care Center, Inc., a Minnesota Non-Profit Corporation, the City of Pine Island, a Minnesota Municipal Corporation, Pine Haven Kids Korner, Inc., a Minnesota Non-Profit Corporation, and Rebecca A. Bjugan, 1/4-a Rebecca A. Archer, and Britt L. Bjugan, wife and husband, Merchants Bank, National Association, mortgagee, and Pine Island Bank, 1/4-a Security State Bank of Pine Island, a Minnesota Corporation, mortgagee, owners and proprietors of the following described property situated in the City of Pine Island, State of Minnesota, to wit:

All of Block 27, as depicted on A.K. STONE'S ADDITION, Pine Island, Minnesota, County of Goodhue and the vacated alley running east and west through said Block 27.

All of Lots 7, 8, 9, 10, 11, and 12, Block 22, as depicted on A.K. STONE'S ADDITION, Pine Island, Minnesota, County of Goodhue and all of the vacated alley running east and west through said Block 22.

All of vacated Broad Way, as depicted on A.K. STONE'S ADDITION, Pine Island, Minnesota from the westerly line of 1st Avenue N.W. (formerly platted as Mill Street) and the easterly line of Howard Street (now vacated), all as depicted on A.K. STONE'S ADDITION, City of Pine Island, Minnesota, County of Goodhue.

All of vacated Howard Street bounded on the north by the westerly extension of the north line of the alley running east and west through Block 22 and on the south by the westerly extension of the south line of Block 27, all as depicted on A.K. STONE'S ADDITION, Pine Island, Minnesota, County of Goodhue.

All of Outlot "E", ROYAL COURT SUBDIVISION, and all of the vacated Park Court N.W., as platted in said ROYAL COURT SUBDIVISION, Pine Island, Minnesota, County of Goodhue.

That part of the Northwest Quarter of the Northwest Quarter of Section 32, Township 109 North, Range 15 West, Goodhue County, Minnesota being described as follows:

Commencing at the northwest corner of the Northwest Quarter of said Section 32; thence N89°51'49"E, assumed bearing, along the north line of said Northwest Quarter, 569.39 feet to a point being 33.00 feet west of the northwest corner of Block 6, as depicted on A.K. STONE'S ADDITION; thence S00°00'13"W, along the west line of Howard Street, as depicted on A.K. STONE'S ADDITION, 996.31 feet to the southeast corner of Outlot "E", ROYAL COURT SUBDIVISION for a point of beginning; thence continue S00°00'13"W, along the west line of said Howard Street, 284.07 feet to the north line of 3rd Street N.W. (formerly depicted as Washington Street, on said A.K. STONE'S ADDITION); thence S89°48'00"W, along said north line, 41.00 feet; thence N00°00'13"E, parallel with the east line of said Howard Street, 137.00 feet; thence S89°48'00"W, parallel with the north line of said 3rd Street N.W., 314.85 feet to the centerline of 3rd Avenue N.W. (formerly County Road No. 11); thence northwesterly, 148.56 feet along a curve, not tangent to the last described course, concave to the southwest, central angle of 06°41'07", radius of 1273.24 feet, and chord of said curve bears N06°49'22"W, 148.48 feet to the southwest corner of said ROYAL COURT SUBDIVISION; thence N89°51'49"E, along the south line of said ROYAL COURT SUBDIVISION, 373.50 feet to the point of beginning.

And:
That part of the Northwest Quarter of the Northwest Quarter of Section 32, Township 109 North, Range 15 West, Goodhue County, Minnesota being described as follows:

Commencing at the southwest corner of Block 27 as depicted on A.K. STONE'S ADDITION to the Village of Pine Island, Minnesota; thence west along the north property line of 3rd Street N.W. (formerly Washington Street) for a distance of 203.30 feet to the point of beginning; thence north and parallel to the west boundary of said Block 27 for a distance of 137.00 feet; thence west on a line parallel with the north property line of 3rd Street N.W. (formerly Washington Street) for a distance of 108.00 feet; thence south along the east property line of 3rd Avenue N.W. (formerly Pine Street) for a distance of 137.00 feet; thence east along the north property line of 3rd Avenue N.W. (formerly Washington Street) for a distance of 158.00 feet to the point of beginning.

And:
That part of the Northwest Quarter of the Northwest Quarter of Section 32, Township 109 North, Range 15 West, Goodhue County, Minnesota, described as follows:

Commencing at the southwest corner of Block 27 as depicted on A.K. STONE'S ADDITION to the City of Pine Island (being the point of intersection of the east line of Howard Street, as depicted on said A.K. STONE'S ADDITION, and the north line of 3rd Street N.W., formerly Washington Street in the Original Town of Pine Island; thence S89°48'00"W, assumed bearing, along the north line of said 3rd Street N.W., 74.00 feet for a point of beginning; thence N00°00'13"E, parallel with the east line of said Howard Street, 137.00 feet; thence S89°48'00"W, parallel with the north line of 3rd Street N.W., 129.30 feet; thence S00°00'13"W, parallel with the east line of said Howard Street, 137.00 feet to the north line of 3rd Street N.W.; thence N89°48'00"E, along said north line, 129.30 feet to the point of beginning.

Have caused the same to be surveyed and platted as PINE HAVEN COMMUNITY, and do hereby dedicate to the public, for the public use forever the thoroughfare and dedicate the easements, for drainage and utility purposes only, as shown on this plat.

In witness whereof said Pine Haven, Inc., 1/4-a Pine Haven Care Center, Inc., a Non-Profit Minnesota Corporation, has caused these present to be signed by its proper officer this 20 day of April, 2012.

Charles Andrew Aho
Board Chairman

State of Minnesota
County of Goodhue

The foregoing instrument was acknowledged before me this 20 day of April, 2012, by *Charles Andrew Aho*, its Board Chairman on behalf of the corporation.

Charles Andrew Aho
Notary Public, Goodhue County, Minnesota
My commission expires 1/31/2015

Document Number **594505**

I hereby certify that this instrument was filed in the office of the County Recorder for record this 20 day of April, 2012, at 2:00 o'clock P.M.

File Number **3688**
Paul Perry
County Recorder
Goodhue County, Minnesota

