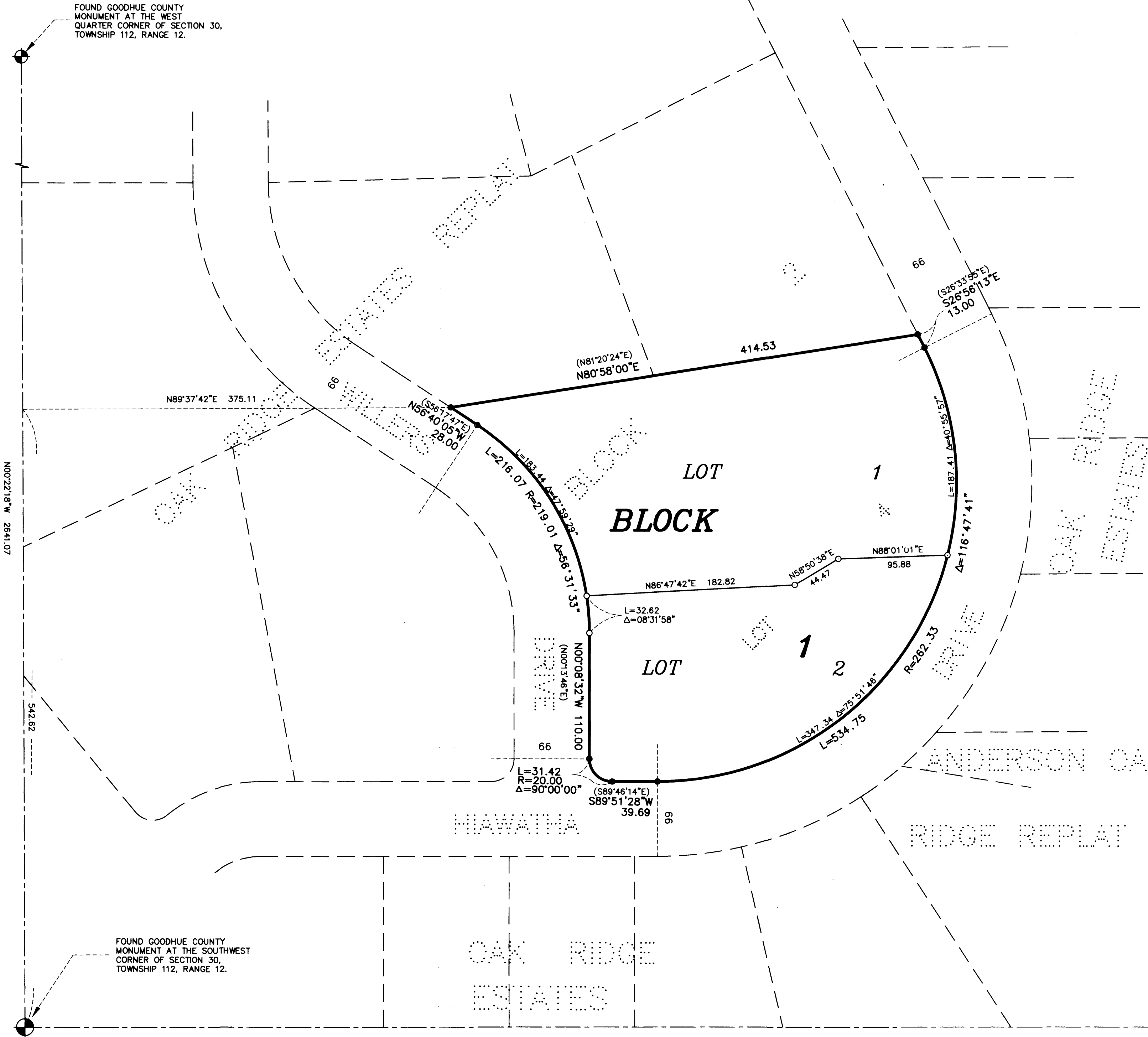


# WHITE OAK RIDGE REPLAT



KNOW ALL PERSONS BY THESE PRESENTS: That Myron D. White and Deborah J. White, husband and wife owners and proprietors and Lake City Federal Bank, an United States Corporation, mortgagee of the following described property to wit:

Lot 4 in Block 2, of OAK RIDGE ESTATES REPLAT, according to the plat thereof on file and of record in the office of the County Recorder for Goodhue County, State of Minnesota.

Have caused the same to be surveyed and platted as WHITE OAK RIDGE REPLAT.  
 In witness whereof said Myron D. White and Deborah J. White, husband and wife, have hereunto set their hands this 13<sup>th</sup> day of November 2012  
 Myron D. White Deborah J. White

STATE OF MINNESOTA  
 COUNTY OF Goodhue  
 The foregoing instrument was acknowledged before me this 13 day of November 2012 by Myron D. White and Deborah J. White husband and wife.

Kelly A. Haeska  
 Notary Public Goodhue County, Minnesota  
 My Commission Expires 1-31-2015

KELLY A. HAESKA  
 Notary Public - Minnesota  
 My Commission Expires Jan 31, 2015

In witness whereof said Lake City Federal Bank, an United States Corporation, has caused these presents to be signed by it's proper officers this 13<sup>th</sup> day of November 2012 by Bruce A. Carlstrom it's President and Amanda J. Beltz it's Corporate Secretary

STATE OF Minnesota  
 COUNTY OF Wabasha  
 The foregoing instrument was acknowledged before me this 13<sup>th</sup> day of November 2012 by Bruce A. Carlstrom it's President and Amanda J. Beltz it's Corp. Secretary of Lake City Federal Bank, an United States Corporation, on behalf of said Organization.

Lucinda M. Boie  
 Notary Public Wabasha County, Minnesota  
 My Commission Expires 1-31-2015

LUCINDA M. BOIE  
 NOTARY PUBLIC - MINNESOTA  
 My Commission Expires Jan 31, 2015

I hereby certify:  
 That I have surveyed or directly supervised the survey of the property described on this plat; that I have prepared or directly supervised the preparation of this plat as WHITE OAK RIDGE REPLAT; that this plat is a correct representation of the boundary survey; that all mathematical data and labels are correctly designated on the plat; that all monuments depicted on the plat have been correctly set; that as of the date of this certification, all water boundaries and wetlands, as defined in Minnesota Statutes 505.01, subd. 3, are shown and labeled on the plat; and that all public ways are shown and labeled on the plat.

Dated this 13<sup>th</sup> day of November 2012  
Alan K. Scofield  
 Alan K. Scofield, Land Surveyor  
 Minnesota License Number 15473.

STATE OF MINNESOTA  
 COUNTY OF GOODHUE  
 The foregoing instrument was acknowledged before me this 13<sup>th</sup> day of November 2012 by Alan K. Scofield, Land Surveyor.  
Alan K. Scofield  
 Notary Public Goodhue County, Minnesota  
 My Commission Expires January 31, 2014.

KATIE LYNN FRAZIER  
 NOTARY PUBLIC - MINNESOTA  
 My Commission Expires Jan. 31, 2014

Approved by the County Board of Commissioners of Goodhue County, Minnesota, at their November 6th, 2012 County Board meeting.  
 SIGNED: Richard Samulson Test: Scott Olson  
 Chairman County Administrator

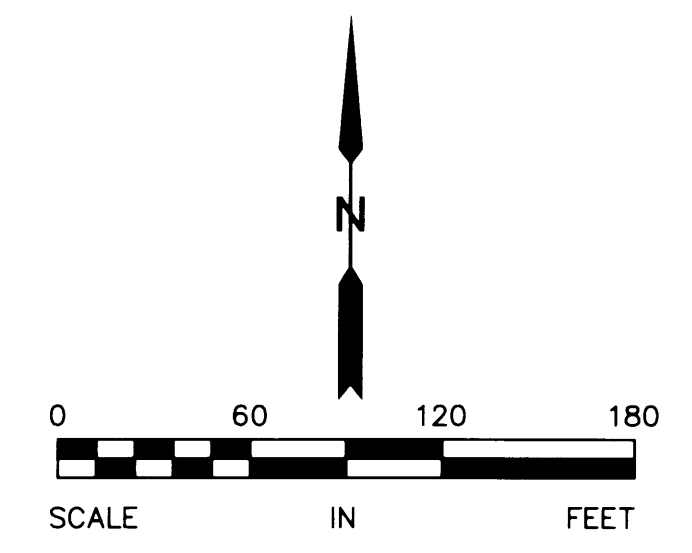
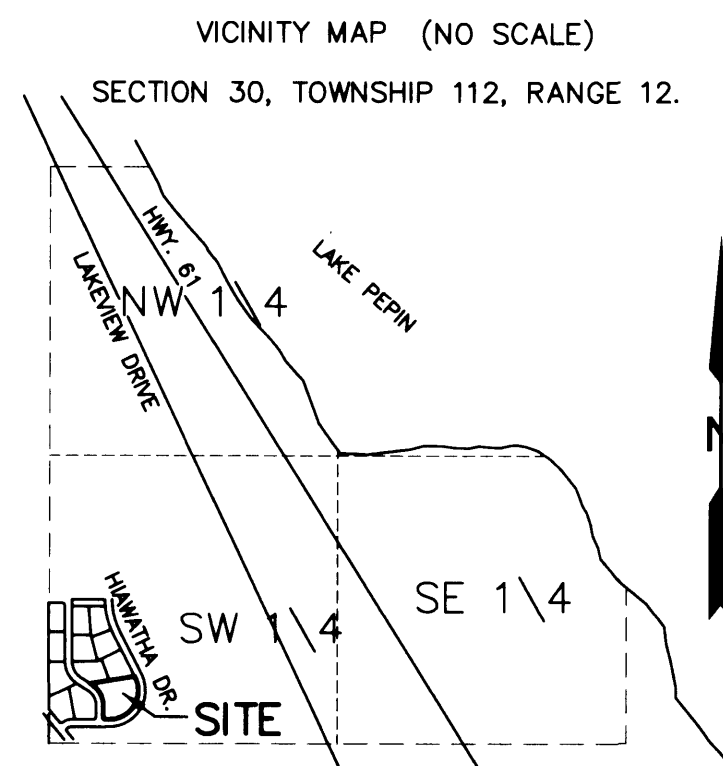
Approved by the Florence Township Board, this 14 day of Nov, 2012  
 Signed: [Signature]  
 Chairman

Taxes payable in the year 2012 on the land herein described have been paid, there are no delinquent taxes and transfer has been entered this 15<sup>th</sup> day of November 2012  
Cathryn Wilbur  
 Goodhue County Auditor/Treasurer  
 By [Signature] Deputy

Pursuant to Chapter 389.09, laws of Minnesota, and Goodhue County Ordinance No. 2-78, this plat has been approved this 15<sup>th</sup> day of November, 2012  
[Signature]  
 Goodhue County Surveyor

I hereby certify that proper evidence of title has been presented to and examined by me and I hereby approve this plat as to form and execution.  
Stephen H. Butcher  
 Attorney for Goodhue County

I hereby certify that the within instrument was filed in this office for record this 16<sup>th</sup> day of November 2012 at 10:05 o'clock Am and was duly recorded as document number 600211 file number 310A  
[Signature]  
 Goodhue County Recorder



- DENOTES FOUND IRON MONUMENT
- DENOTES PLACED 1"x18" IRON PIPE HAVING A PLASTIC CAP BEARING LAND SURVEYOR LICENSE NO. 15473.
- (S68°36'31"W) DENOTES BEARING BASED ON RECORD PLAT OF OAK RIDGE ESTATES REPLAT.

THE BEARINGS SHOWN HEREON ARE ORIENTED WITH THE GOODHUE COUNTY COORDINATE SYSTEM NAD 1983, 1996 ADJUSTMENT HARN.

**JOHNSON & SCOFIELD INC.**  
**SURVEYING AND ENGINEERING**  
 1203 MAIN ST.-RED WING-MN 55066 (651) 388-1558  
 626 JEFFERSON AVENUE  
 WABASHA-MN 55981 (651) 565-3244