

THE HIGHLANDS OF ZUMBROTA FOURTH

KNOW ALL PERSONS BY THESE PRESENTS: That Allan L. Schumacher and Carol M. Schumacher, husband and wife, and Zumbrota Golf Course Properties, LLC, a Minnesota limited liability company, owners, and Bank of Zumbrota, a Minnesota corporation, mortgagee, of the following described property:

That part of the Southeast Quarter of Section 24, Township 110 North, Range 16 West, Goodhue County, Minnesota, described as follows:

Commencing at the southwest corner of the Southeast Quarter of said Section 24; thence North 00 degrees 22 minutes 26 seconds East (bearings are based on the Goodhue County Coordinate System NAD83 1996 Adjustment) along the west line of said Southeast Quarter, 1192.70 feet to the northwest corner of Block 3, THE HIGHLANDS OF ZUMBROTA THIRD for the point of beginning; thence continue North 00 degrees 22 minutes 26 seconds East along said west line, 1443.04 feet to the northwest corner of said Southeast Quarter; thence North 89 degrees 41 minutes 12 seconds East along the north line of said Southeast Quarter, 723.42 feet to the northwest corner of THE HIGHLANDS OF ZUMBROTA (the next eight courses are along the westerly line of said THE HIGHLANDS OF ZUMBROTA); thence South 00 degrees 08 minutes 54 seconds West, 329.36 feet; thence South 15 degrees 04 minutes 29 seconds West, 103.87 feet; thence South 38 degrees 59 minutes 40 seconds West, 804.15 feet; thence South 89 degrees 23 minutes 41 seconds West, 134.99 feet; thence southerly 30.42 feet along a nontangential curve concave to the east, radius of 167.00 feet, central angle of 10 degrees 26 minutes 18 seconds and the chord of said curve bears South 08 degrees 29 minutes 41 seconds West, 30.38 feet; thence North 89 degrees 23 minutes 41 seconds East, not tangent to said curve, 139.03 feet; thence South 02 degrees 34 minutes 15 seconds East, 83.55 feet; thence South 19 degrees 57 minutes 04 seconds East, 250.30 feet to the northeast corner of Lot 1, Block 1, THE HIGHLANDS OF ZUMBROTA THIRD; thence South 89 degrees 23 minutes 41 seconds West along the north line of said Lot 1, a distance of 127.15 feet; thence South 41 degrees 09 minutes 19 seconds West, 57.15 feet to the northeast corner of Lot 1, Block 3, THE HIGHLANDS OF ZUMBROTA THIRD; thence North 89 degrees 37 minutes 34 seconds West along the north line of said Lot 1, a distance of 122.91 feet to the point of beginning.

TOGETHER WITH:

Lot 1, Block 1, THE HIGHLANDS OF ZUMBROTA THIRD, Goodhue County, Minnesota.

Containing in all 15.78 acres.

Have caused the same to be surveyed and platted as THE HIGHLANDS OF ZUMBROTA FOURTH and do hereby dedicate to the public for public use the public ways and the drainage and utility easements as created by this plat.

In witness whereof said Allan L. Schumacher and Carol M. Schumacher, husband and wife, have hereunto set their hands this 18 day of March, 2013.

Allan L. Schumacher
Allan L. Schumacher

Carol M. Schumacher
Carol M. Schumacher

STATE OF MINNESOTA
COUNTY OF Goodhue

This instrument was acknowledged before me on 3-18-2013 by Allan L. Schumacher and Carol M. Schumacher, husband and wife.

Cynthia J. Thompson
Notary Public, Goodhue County, Minnesota

Cynthia J. Thompson
Notary Printed Name

My commission expires 1-31-2015

In witness whereof said Zumbrota Golf Course Properties, LLC, a Minnesota limited liability company, has caused these presents to be signed by its proper officer this 18 day of March, 2013.

SIGNED: ZUMBROTA GOLF COURSE PROPERTIES, LLC

Joel O. Bigelow
Joel O. Bigelow, Chief Manager

STATE OF MINNESOTA
COUNTY OF Olmsted

This instrument was acknowledged before me on March 18, 2013 by Joel O. Bigelow, Chief Manager of Zumbrota Golf Course Properties, LLC, a Minnesota limited liability company.

Anthony Bigelow
Notary Public, Olmsted County, Minnesota

Anthony Bigelow
Notary Printed Name

My commission expires Jan 31, 2017

In witness whereof said Bank of Zumbrota, a Minnesota corporation has caused these presents to be signed by its proper officer this 18th day of March, 2013.

SIGNED: BANK OF ZUMBROTA

By Jeff Perra
Jeff Perra, President

STATE OF MINNESOTA
COUNTY OF Goodhue

The foregoing instrument was acknowledged before me this 18 day of March, 2013, by Jeff Perra, President of Bank of Zumbrota, a Minnesota corporation,

Cynthia J. Thompson
Notary Public, Goodhue County, Minnesota

Cynthia J. Thompson
Notary Printed Name

My commission expires 1-31-2015

SURVEYOR'S CERTIFICATE

I hereby certify:
That I have surveyed or directly supervised the survey of the property described on this plat; that I have prepared or directly supervised the preparation of this plat as THE HIGHLANDS OF ZUMBROTA FOURTH; that this plat is a correct representation of the boundary survey; that all mathematical data and labels are correctly designated on the plat; that all outside boundary monuments of the plat have been correctly set and that all other required monuments will be correctly set within one year of the recording of this plat; that as of the date of this certificate, all water boundaries and wetlands, as defined in Minnesota Statutes 505.01, Subd. 3, are shown and labeled on the plat; and that all public ways are shown and labeled on the plat.

Dated this 15 day of March, 2013.

Mark E. Severson
Mark E. Severson, Professional Surveyor
Minnesota License No. 18887

STATE OF MINNESOTA
COUNTY OF OLMSTED

The instrument was acknowledged before me on March 15, 2013 by Mark E. Severson.

Beverly E. Delisle
Notary Public, Olmsted County, Minnesota

Beverly E. Delisle
Notary Printed Name

My commission expires Jan 31, 2015

GOODHUE COUNTY SURVEYOR

Pursuant to Chapter 389.09, laws of Minnesota, and Goodhue County Ordinance No. 2-78, this plat has been approved this 19th day of March, 2013.

Lisa M. Hanni
Lisa M. Hanni, Goodhue County Surveyor

CITY APPROVAL

State of Minnesota
County of Goodhue
City of Zumbrota

We, Richard Bauer, Mayor; Neil Jensen, City Administrator; Lowell Olson, Planning Commission Chair and Daniel King, Planning Commission Secretary, in and for the City of Zumbrota, do hereby certify that on the 18 day of February, 2013, the accompanying plat was duly approved by the Common Council of the City of Zumbrota. In testimony thereof we have hereunto signed our names this 18 day of March, 2013.

Richard K. Bauer
Mayor

Neil Jensen
City Administrator

Lowell Olson
Planning Commission Chair

Daniel King
Planning Commission Secretary

TAX STATEMENT

Taxes payable in the year 2013 on the land herein described have been paid; there are no delinquent taxes and transfer has been entered this 18th day of March, 2013.

Cynthia J. Thompson
Goodhue County Auditor / Treasurer

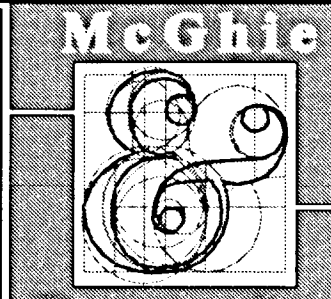
[Signature]
Deputy

COUNTY RECORDER

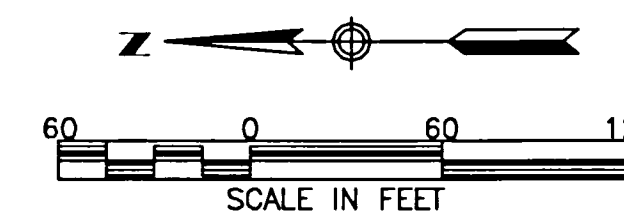
DOCUMENT NUMBER _____

I hereby certify that this instrument was filed in the office of the County Recorder for record on this 21st day of March, 2013, at 12:12 o'clock P.m., and was duly recorded as document number 603857.

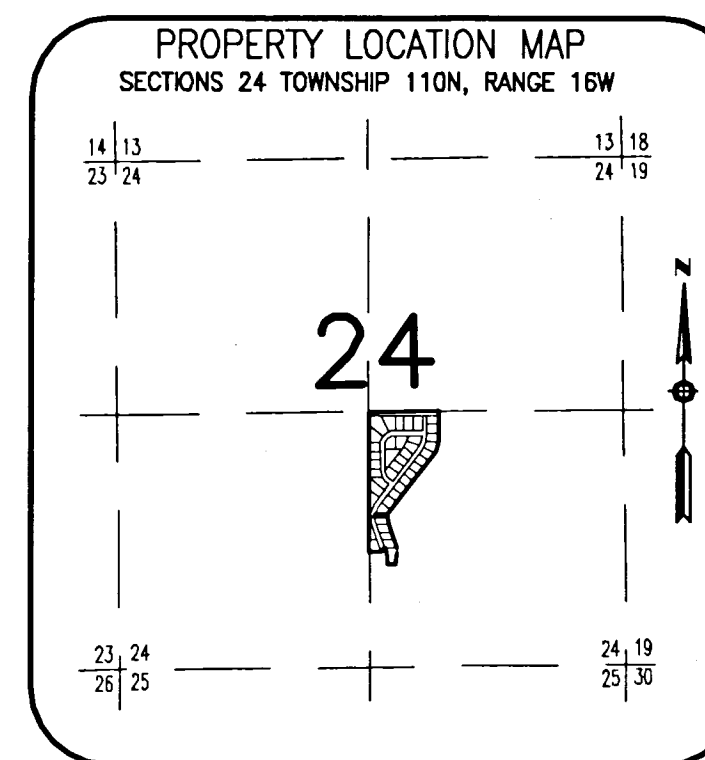
By [Signature]
Goodhue County Recorder

<p>McGhie & Betts, Inc. 1648 Third Avenue S.E. Rochester, MN 55904</p> <p>Telephone: 507-289-3919 Fax: 507-289-7333 mbi@mcghiebetts.com</p>	 <p>McGhie Betts, Inc.</p>	<p>Land Surveying Civil Engineering Consulting Land Planning Geotechnical Engineering Construction Material Testing Landscape Architecture</p>
---	---	--

THE HIGHLANDS OF ZUMBROTA FOURTH

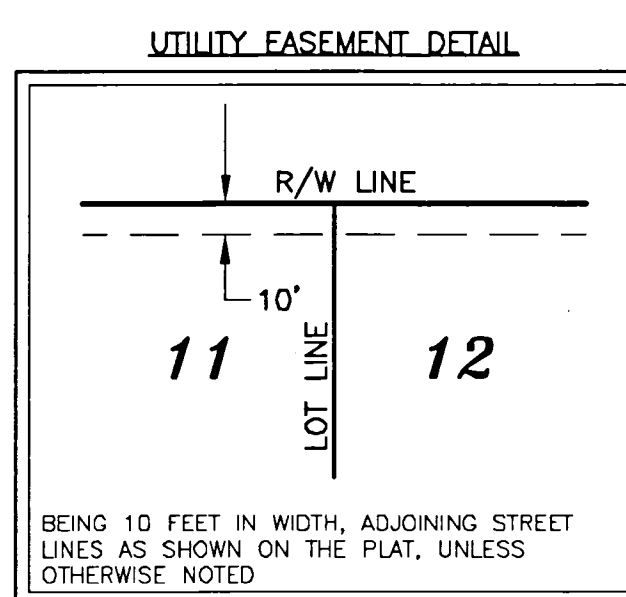
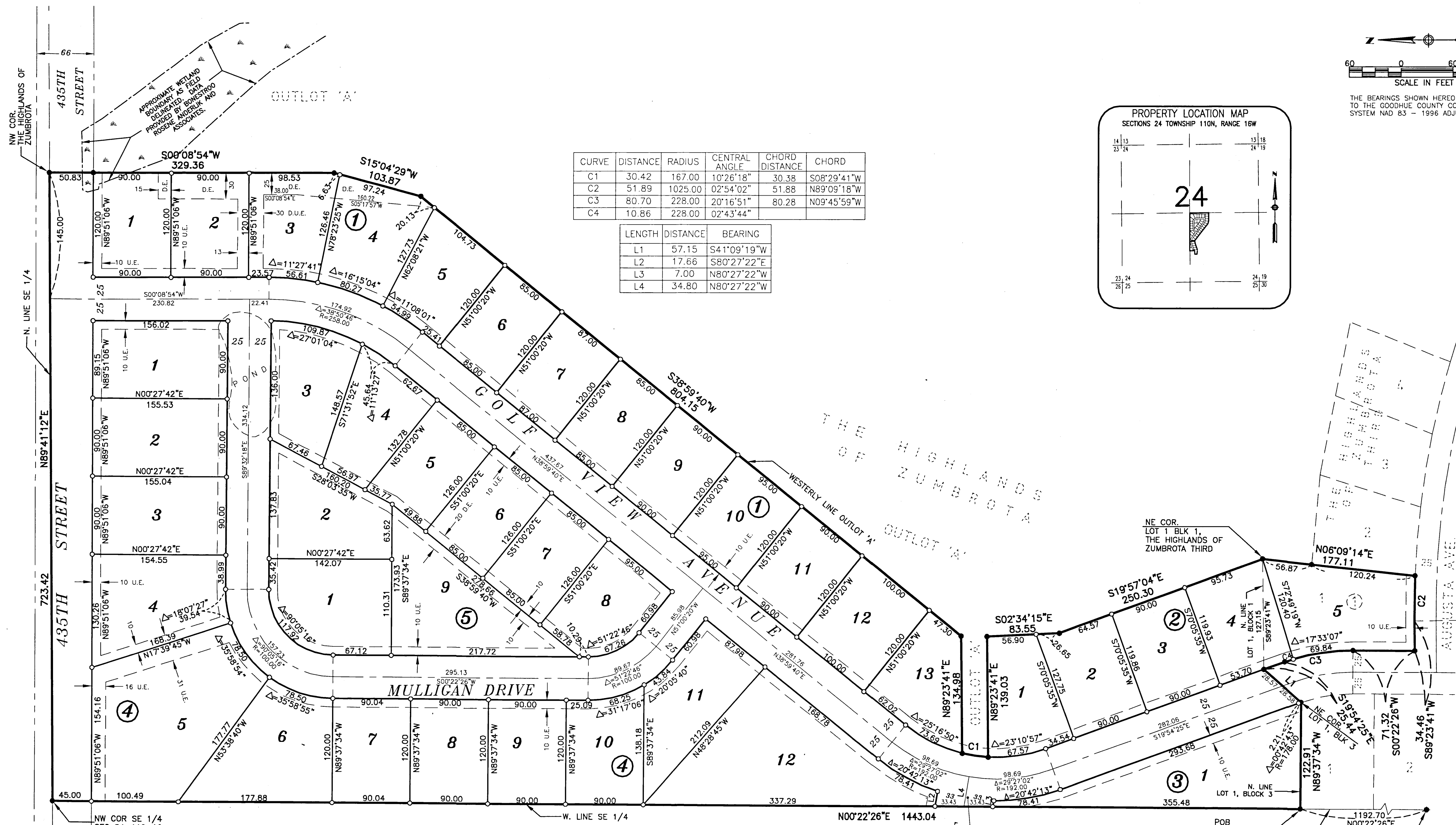


THE BEARINGS SHOWN HEREON ARE ORIENTED TO THE GOODHUE COUNTY COORDINATE SYSTEM NAD 83 - 1996 ADJUSTMENT



CURVE	DISTANCE	RADIUS	CENTRAL ANGLE	CHORD DISTANCE	CHORD
C1	30.42	167.00	10°26'18"	30.38	S08°29'41"W
C2	51.89	1025.00	02°54'02"	51.88	N89°09'18"W
C3	80.70	228.00	20°16'51"	80.28	N09°45'59"W
C4	10.86	228.00	02°43'44"		

LENGTH	DISTANCE	BEARING
L1	57.15	S41°09'19"W
L2	17.66	S80°27'22"E
L3	7.00	N80°27'22"W
L4	34.80	N80°27'22"W



UTILITY EASEMENT (U.E.) DEFINED:
 AN UNOBSTRUCTED EASEMENT FOR THE CONSTRUCTION AND MAINTENANCE OF ALL NECESSARY UNDERGROUND OR SURFACE PUBLIC UTILITIES, INCLUDING RIGHTS TO CONDUCT DRAINAGE AND TRIMMING ON SAID EASEMENT.

DRAINAGE EASEMENT (D.E.) DEFINED:
 AN UNOBSTRUCTED EASEMENT FOR THE OPERATION AND MAINTENANCE OF WATERWAYS, BOTH SURFACE AND UNDERGROUND, RUNNING OVER, ACROSS, AND UNDER SAID EASEMENT.

DRAINAGE AND UTILITY EASEMENT (D.U.E.)

NOTE:
 ALL MONUMENTS SHOWN THUS: ○
 ARE 5/8" I.D. CAPPED PIPES WITH LICENSE NO. 18887 WHICH WILL BE SET WITHIN 1 YEAR AFTER RECORDING OF THIS PLAT.

ALL MONUMENTS SHOWN THUS: ●
 ARE FOUND IRON MONUMENTS UNLESS OTHERWISE NOTED.

McGhie & Betts, Inc.
 1648 Third Avenue S.E.
 Rochester, MN 55904

Telephone: 507-289-3919
 Fax: 507-289-7333
 mbi@mcgchiebetts.com

McGhie

Betts, Inc.

Land Surveying
 Civil Engineering
 Consulting
 Land Planning
 Geotechnical Engineering
 Construction Material Testing
 Landscape Architecture