

# RED WING HIGH SCHOOL ADDITION REPLAT

KNOW ALL PERSONS BY THESE PRESENTS: That Independent School District No. 256, formed under the laws of the State of Minnesota, owner and proprietor of the following described land, situated in the County of Goodhue, State of Minnesota, to wit:

The south 68.53 feet of Outlot E, RED WING HIGH SCHOOL ADDITION, according to the recorded plat thereof, on file in the office of the Goodhue County Recorder.

AND

Outlot B of said RED WING HIGH SCHOOL ADDITION. Except that part that lies within the boundaries of GOODHUE COUNTY RIGHT OF WAY PLAT NO. 110, according to the recorded plat thereof, on file in the office of the Goodhue County Recorder.

AND

Outlot D of said RED WING HIGH SCHOOL ADDITION.

Except that part of said Outlot D that lies within the boundaries of MINNESOTA DEPARTMENT OF TRANSPORTATION RIGHT OF WAY PLAT NO. 25-55, according to the recorded plat thereof, on file in the office of the Goodhue County Recorder.

And Except that part of the North 100.00 feet of said Outlot D, that lies easterly of the easterly right of way boundary line of Minnesota Department of Transportation Right of Way Plat Number 25-55, according to the recorded plat thereof, on file in the County Recorder's Office, Goodhue County, Minnesota.

Has caused the same to be surveyed and platted as RED WING HIGH SCHOOL ADDITION REPLAT and does hereby dedicate to the public for public use the public way and the drainage and utility easements as created by this plat.

In witness where of said Independent School District No. 256, a Minnesota School District, has caused these presents to be signed by its President this 3<sup>rd</sup> day of Sept. 2014

*Heidi L. Jones*  
President

STATE OF MINNESOTA  
COUNTY OF GOODHUE

The foregoing instrument was acknowledged before me this 3<sup>rd</sup> day of September 2014 by School Board President of said Independent School District No. 256, a Minnesota School District, on behalf of said School District.

*Deborah Johnson-Lundberg*  
Notary Public  
Notary Public Goodhue County, Minnesota  
My Commission Expires January 31, 2015

I hereby certify:  
That I have surveyed or directly supervised the survey of the property described on this plat; that I have prepared or directly supervised the preparation of this plat as RED WING HIGH SCHOOL ADDITION REPLAT; that this plat is a correct representation of the boundary survey; that all mathematical data and labels are correctly designated on the plat; that all monuments depicted on the plat have been correctly set; that as of the date of this certification, all water boundaries and wetlands, as defined in Minnesota Statutes 505.01, subd. 3, are shown and labeled on the plat; and that all public ways are shown and labeled on the plat.

Dated this 28<sup>th</sup> day of August 2014

*Marcus S. Johnson*  
Marcus S. Johnson, Land Surveyor  
Minnesota License Number 47460

STATE OF MINNESOTA  
COUNTY OF GOODHUE

The foregoing instrument was acknowledged before me this 28<sup>th</sup> day of August 2014, by Marcus S. Johnson, Land Surveyor.

*Katie Lynn Frazier*  
Notary Public Goodhue County, Minnesota  
My Commission Expires January 31, 2016

Approved by the City Council of Red Wing, Minnesota, this 28<sup>th</sup> day of July 2014

SIGNED: *Michael J. Harty* City Clerk *Daniel D. Bender* Mayor

Taxes payable in the year 2014 on the land herein described have been paid, there are no delinquent taxes and transfer has been entered this 4<sup>th</sup> day of Sept. 2014

*Laraine Hilaster*  
Goodhue County Auditor/Treasurer

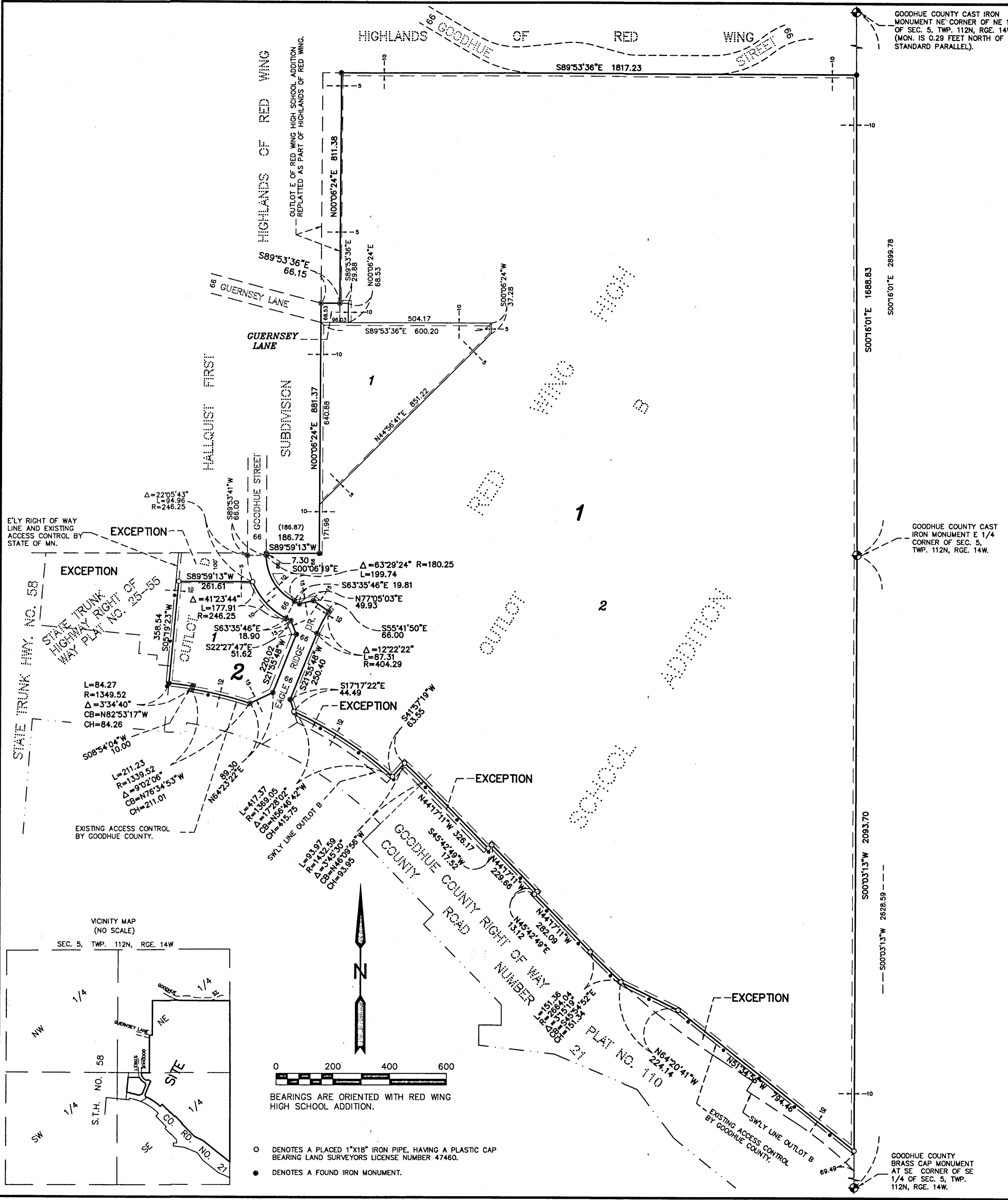
By *A. J. [Signature]* Deputy

Pursuant to Chapter 389.09, laws of Minnesota, and Goodhue County Ordinance No. 2-78, this plat has been approved this 4 day of September 2014

*[Signature]*  
Goodhue County Surveyor

I hereby certify that the within instrument was filed in this office for record this 9<sup>th</sup> day of September 2014 at 2:22 p.m. and was duly recorded as document number 6116570

*[Signature]*  
Goodhue County Recorder



**JOHNSON & SCOFIELD INC.**  
SURVEYING AND ENGINEERING  
1203 MAIN STREET RED WING, MN 55066  
(651)388-1558, (800)736-0585