

CENEX ADDITION 4

INSTRUMENT OF DEDICATION

KNOW ALL PERSONS BY THESE PRESENTS: That Wanamingo Economic Development Authority, a political subdivision, fee owner of the following described property situated in the County of Goodhue, State of Minnesota, to wit:

Outlot A, CENEX ADDITION 3, according to the recorded plat thereof, Goodhue County, Minnesota.

Has caused the same to be surveyed and platted as CENEX ADDITION 4 and does hereby dedicate to the public for public use the street and avenue, and dedicates the easements as shown on this plat for drainage and utility purposes only.

In witness whereof the Wanamingo Economic Development Authority, a political subdivision, has caused these presents to be signed by its proper officer this 14th day of Oct, 2014.

James Kittelson
James Kittelson, President

Michael Boulton
Michael Boulton, Director

STATE OF MINNESOTA
COUNTY OF Goodhue

The foregoing instrument was acknowledged before me this 14th day of Oct, 2014, by James Kittelson, President, and Michael Boulton, Director of the Wanamingo Economic Development Authority, a political subdivision, on behalf of the corporation.

Jean C. Rugg
Notary Public, Goodhue County, Minnesota
My Commission Expires 1-31-18

SURVEYOR'S CERTIFICATE

I hereby certify that I have surveyed and platted the property described on this plat as CENEX ADDITION 4; that this plat is a correct representation of the boundary survey, that all mathematical data and labels are correctly designated on the plat; that all monuments depicted on the plat have or will be correctly set within one year as indicated on the plat; that all water boundaries and wet lands as defined in MS 505.01, Subd. 3, existing as of the date of this certification are shown and labeled on the plat; and that all public ways are shown and labeled on the plat.

Dated this 7th day of October, 2014

Richard J. Massey
Richard J. Massey, Land Surveyor
Minnesota License No. 41814

STATE OF MINNESOTA
COUNTY OF _____

The foregoing Surveyor's Certificate was acknowledged before me this 7th day of October, 2014 by Richard J. Massey, Minnesota License No. 41814.

Richard J. Massey
Notary Public, Goodhue County, Minnesota
My Commission Expires Jan. 31, 2020

CITY APPROVAL

We do hereby certify that on the 28th day of July, 2014, the City Council of Wanamingo, Minnesota, approved this plat.

Michael Boulton
Mayor
Administrator-Clerk

COUNTY SURVEYOR

Pursuant to Chapter 389.09, laws of Minnesota, and Goodhue County Ordinance 2-78, this plat has been approved this 22nd day of Oct, 2014.

Lisa M. Hanni
Lisa M. Hanni, LS
Goodhue County Surveyor

GOODHUE COUNTY, AUDITOR/TREASURER

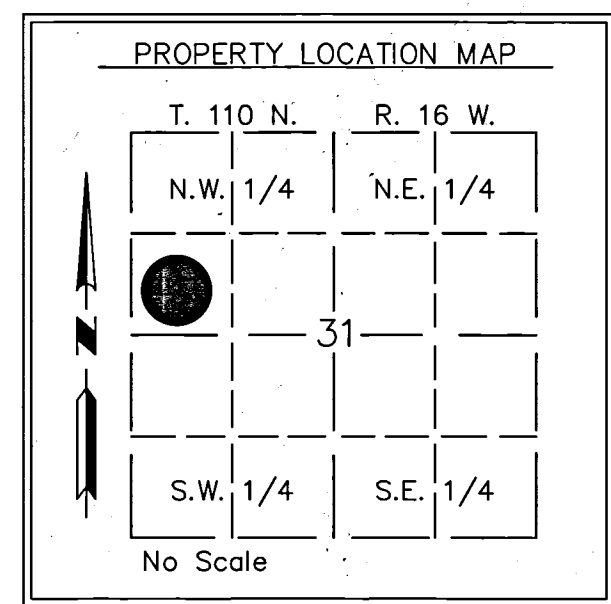
Taxes payable in the year 2014, on the land herein described, have been paid; there are no delinquent taxes and transfer has been entered on this 22nd day of October, 2014.

Carolyn Hinmeyer
Goodhue County Auditor/Treasurer

GOODHUE COUNTY, RECORDER

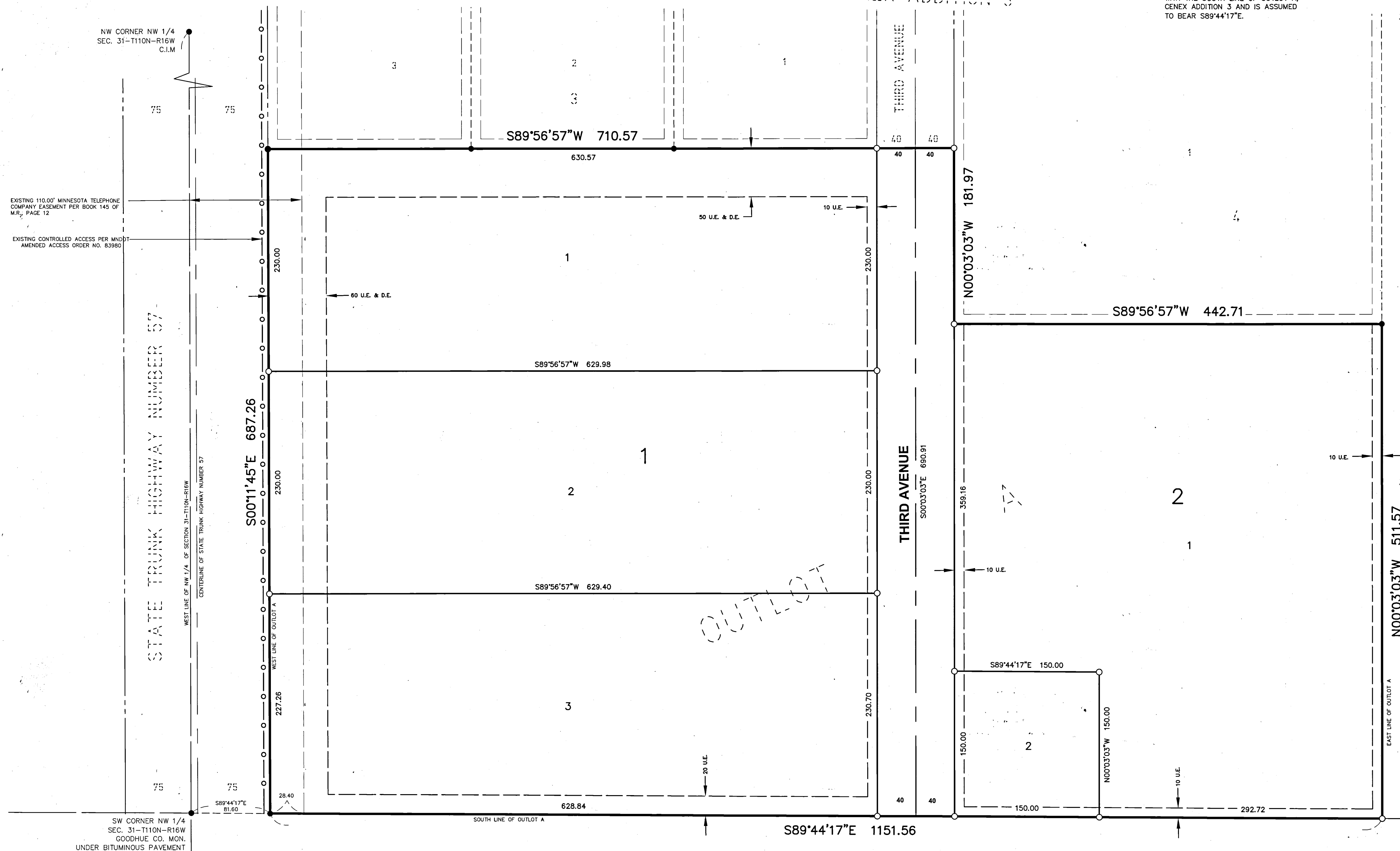
I hereby certify that this within instrument was filed in this office for record this 22nd day of October, 2014, at 1:31 P.M., and was duly recorded as document number 617593, file number 379A.

Lisa M. Hanni
Lisa M. Hanni, LS
Goodhue County Recorder



LEGEND

- - FOUND IRON PIPE UNLESS OTHERWISE NOTED
- - DENOTES 1" Ø IRON PIPE WITH CAP #41814
- EASEMENT
- CENTERLINE
- RIGHT-OF-WAY
- EXISTING BOUNDARY
- CONTROLLED ACCESS



UTILITY EASEMENT DEFINED

An unobstructed easement for the construction and maintenance of all necessary overhead, underground or surface public utilities, including rights to conduct drainage and trimming on said easement.

DRAINAGE EASEMENT DEFINED

An unobstructed easement for the construction and maintenance of underground and surface drainage facilities and utility easement.

U.E. = UTILITY EASEMENT

D.E. = DRAINAGE EASEMENT

BEARING SYSTEM USED:

ALL BEARINGS ARE IN RELATIONSHIP WITH THE SOUTH LINE OF OUTLOT A, CENEX ADDITION 3 AND IS ASSUMED TO BEAR S89°44'17"E.

