

# OAK STREET SENIOR HOUSING

KNOW ALL PERSONS BY THESE PRESENTS: That Lake City Partners MN, LLC, a Minnesota limited liability company, owner of the following described property situated in the County of Goodhue, State of Minnesota, to wit:

Lots 1, 2, 3 and 4, Block 2 of FROJD'S REPLAT, according to the recorded plat thereof, on file in the County Records office Goodhue County, State of Minnesota.

AND

Lots 1 and 2, Block 1 of RE-SUBDIVISION OF FROJD'S REPLAT, according to the the recorded plat thereof, on file in the County Records office Goodhue County, State of Minnesota.

Have caused the same to be surveyed and platted as OAK STREET SENIOR HOUSING and do hereby dedicate to the public, for public use the drainage and utility easements as shown on this plat.

In witness whereof said Lake City Partners MN, LLC, a Minnesota limited liability company, has caused these presents to be signed by its proper officer this 23<sup>rd</sup> day of October, 2014.

LAKE CITY PARTNERS MN, LLC

Theodore Jokerst  
Theodore Jokerst, President

STATE OF MINNESOTA  
COUNTY OF Hennepin

The foregoing instrument was acknowledged before me this 27<sup>th</sup> day of October, 2014, by Theodore Jokerst, President of Lake City Partners MN, LLC, a Minnesota limited liability company owner on behalf of the company.

Jennifer L. Levine  
Notary Public, Hennepin County, Minnesota  
My Commission Expires January 21st, 2017

### SURVEYORS CERTIFICATE

I hereby certify that I have surveyed or directly supervised the survey of the property described on this plat; that I have prepared or directly supervised the preparation of this plat as OAK STREET SENIOR HOUSING; that this plat is a correct representation of the boundary survey; that all mathematical data and labels are correctly designated on this plat; that all monuments depicted on this plat have been correctly set; that as of the date of this certificate, all water boundaries and wetlands, as defined in Minnesota Statutes 505.01, Subd. 3, are shown and labeled on the plat; and that all public ways are shown and labeled on the plat.

Dated this 23<sup>rd</sup> day of October, 2014.

Mark R. Salo  
Mark R. Salo, Land Surveyor  
Minnesota License No. 43933

STATE OF MINNESOTA  
COUNTY OF Hennepin

The foregoing instrument was acknowledged before me this 23<sup>rd</sup> day of October, 2014, by Mark R. Salo, Land Surveyor.

Shannon Sinnen  
Notary Public, Hennepin County, Minnesota  
My Commission Expires January 31, 2018

### LAKE CITY, MINNESOTA

This plat of OAK STREET SENIOR HOUSING was approved and accepted by the City Council of Lake City, Minnesota, at a regular meeting thereof held this 14<sup>th</sup> day of July, 2014.

By Joe P. Pank  
Mayor

By Kari Jernick  
City Clerk

### GOODHUE COUNTY SURVEYOR

Pursuant to Minnesota Statutes, Chapter 389.09, laws of Minnesota, and Goodhue County Ordinance No. 2-78, this plat has been approved this 13<sup>th</sup> day of NOVEMBER, 2014.

Ed Miller  
Goodhue County Surveyor

### GOODHUE COUNTY TREASURER-AUDITOR

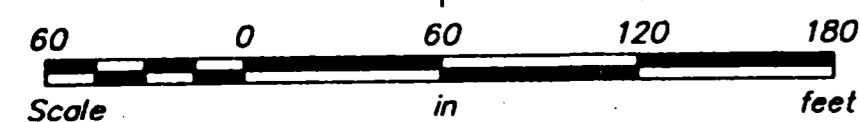
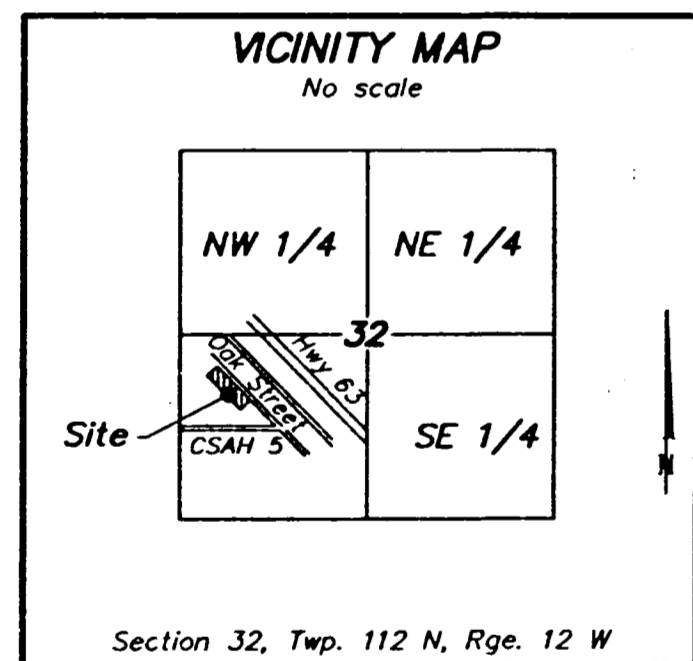
Taxes payable in the year 2014 on the lands herein described have been paid; there are no delinquent taxes and the transfer has been entered this 2<sup>nd</sup> day of November, 2014.

Carolyn Halverson  
Goodhue County Treasurer-Auditor

### GOODHUE COUNTY RECORDER

I hereby certify that the within instrument was filed in this office for record on this 13<sup>th</sup> day of November, 2014, at 8:46 o'clock P.M., as Document No. 618073

Ed Miller  
Goodhue County Recorder



The west line of the Southwest quarter of Section 32, Township 112, Range 12 is assumed to bear N 00°35'33" W.

- Denotes as iron monument found and marked as shown.
- Denotes Set Iron Monument LS Number 43933

