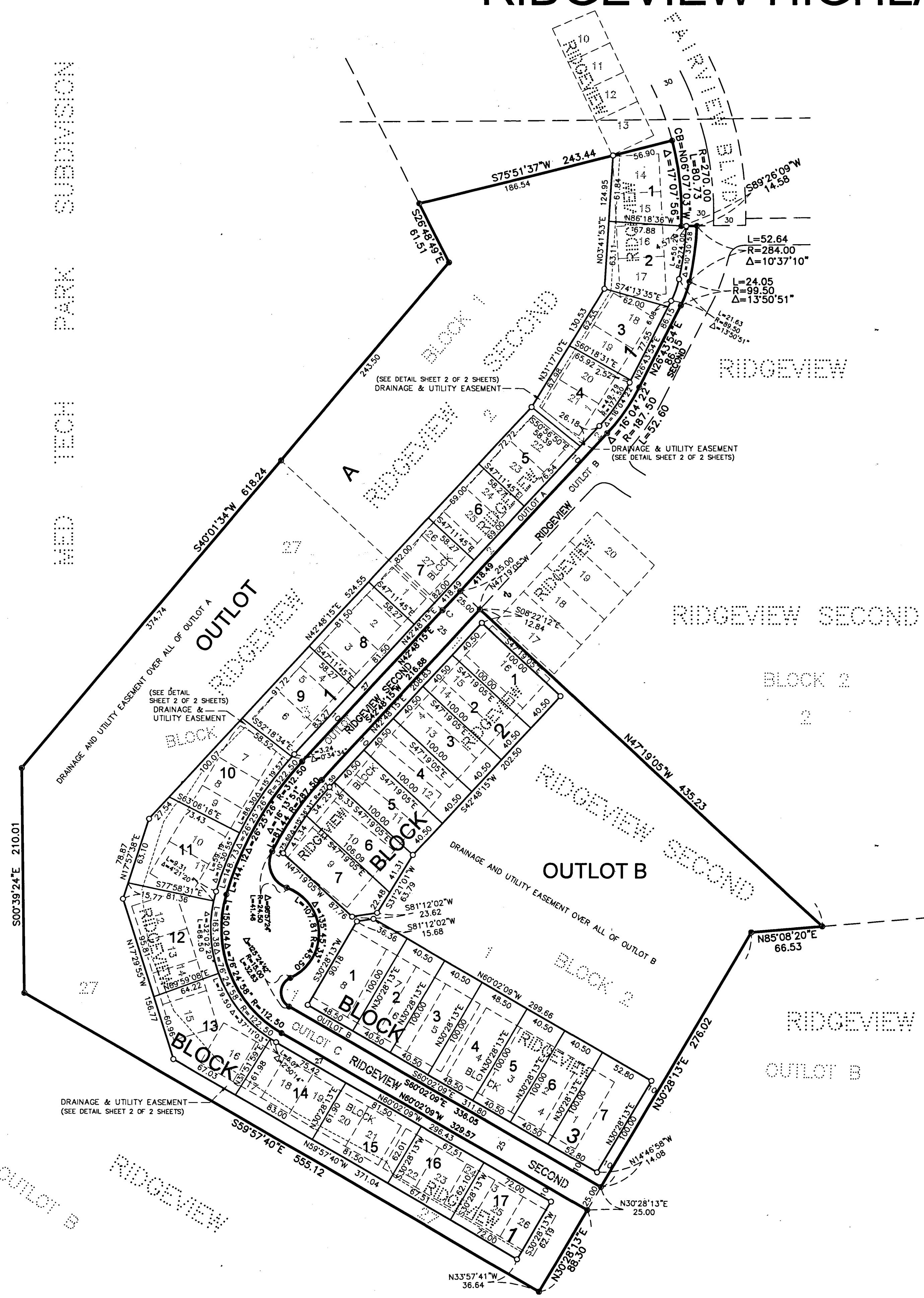


RIDGEVIEW HIGHLANDS SECOND



KNOW ALL PERSONS BY THESE PRESENTS: That Ridgeview Highlands LLC, a Minnesota Limited Liability Company, owner of the following described property:

Lots 14, 15, 16, 17, 18, 19, 20, 21, 22, 23, 24, 25, 26, 27, Block 1, Lots 1, 2, 3, 4, 5, 6, 7, 8, 9, 10, 11, 12, 13, 14, 15, 16, 17, 18, 19, 20, 21, 22, 23, 24, 25, 26, 27, Block 3, and Lots 1, 2, 3, 4, 5, 6, 7, 8, 9, 10, 11, 12, 13, 14, 15, 16, Block 4 all in RIDGEVIEW, according to the recorded plat thereof, on file in the office of the County Recorder, Goodhue County, Minnesota.

AND
Lot 2, Block 1 and Lot 1, Block 2, RIDGEVIEW SECOND, according to the recorded plat thereof, on file in the office of the County Recorder, Goodhue County, Minnesota.

Has caused the same to be surveyed and platted as RIDGEVIEW HIGHLANDS SECOND and does hereby dedicate to the public for public use the drainage and utility easements as created by this plat.

In witness whereof said Ridgeview Highlands LLC, a Minnesota Limited Liability Company, has caused these presents to be signed by its proper officers this 7 day of September, 2018

By Debra J. Anderson, Chief Manager and _____ its _____

STATE OF MINNESOTA
COUNTY OF GOODHUE

The foregoing instrument was acknowledged before me this 7 day of September, 2018 by Debra J. Anderson

its Chief Manager and _____ its _____ of said Ridgeview Highlands LLC, a Minnesota Limited Liability Company

Debra J. Anderson
Notary Public Goodhue County, Minnesota
My Commission Expires Jan 31, 2022

I, Marcus S. Johnson, hereby certify:
That I have surveyed or directly supervised the survey of the property described on this plat; that I have prepared or directly supervised the preparation of this plat as RIDGEVIEW HIGHLANDS SECOND; that this plat is a correct representation of the boundary survey; that all mathematical data and labels are correctly designated on the plat; that all monuments depicted on the plat have been or will be correctly set within one year; that as of the date of this certification all water boundaries and wet lands, as defined in Minnesota Statutes 505.01, Subd. 3, are shown and labeled on the plat; and that all public ways are shown and labeled on the plat.

Dated this 4th day of September, 2018

Marcus S. Johnson
Marcus S. Johnson, Land Surveyor
Minnesota License Number 47460

STATE OF MINNESOTA
COUNTY OF GOODHUE

This instrument was acknowledged before me on this 4th day of September, 2018 by Marcus S. Johnson, Land Surveyor.

Marcus S. Johnson
Notary Public Goodhue County, Minnesota
My Commission Expires January 31, 2022



This plat of RIDGEVIEW HIGHLANDS SECOND was approved and accepted by the City Council of the City of Red Wing, Minnesota at a regular meeting thereof held this 23rd day of July, 2018, and said plat is in compliance with the provisions of Minnesota Statutes, Section 505.03, Subd. 2.

City Council, City of Red Wing, Minnesota
By: Debra J. Anderson
City Clerk
By: Sean M. Johnson
Mayor

Taxes payable in the year 2018 on the land herein described have been paid, there are no delinquent taxes and transfer has been entered this 2nd day of September, 2018

By: B.J. Anderson
Goodhue County Auditor/Treasurer

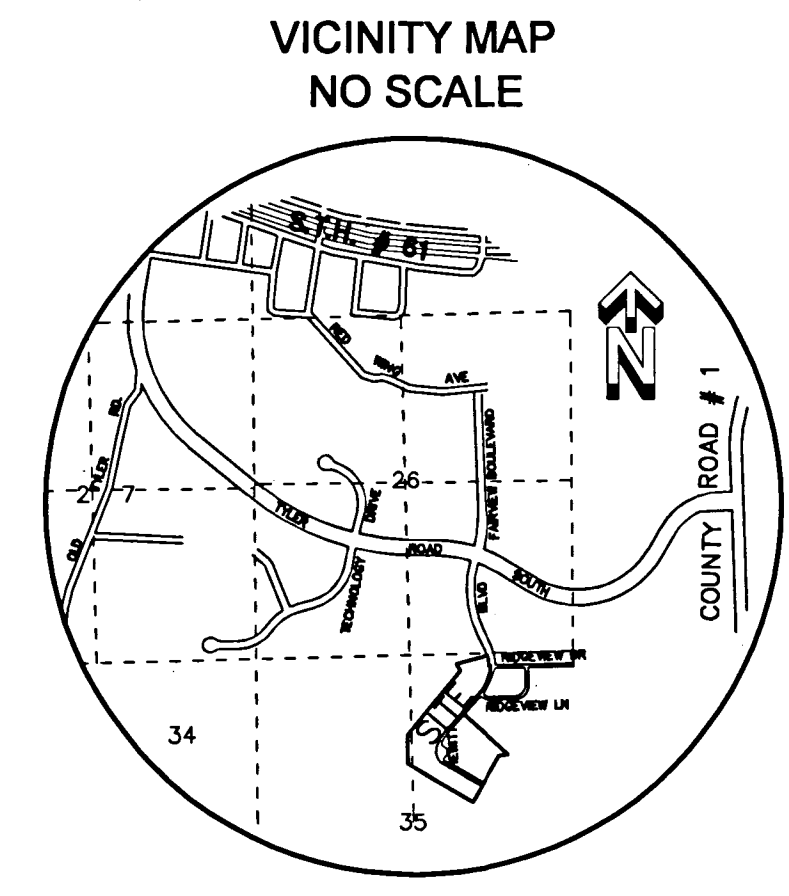
By: [Signature]
Deputy

Pursuant to Chapter 389.09, laws of Minnesota, and Goodhue County Ordinance No. 2-78, this plat has been approved this 10th day of September, 2018

By: [Signature]
Lisa M. Hanni, Goodhue County Surveyor

I hereby certify that the within instrument was filed in this office for record this 10th day of September, 2018, at 1:57 p.m. and was duly recorded as document number 1641153, file number _____

By: [Signature]
Goodhue County Recorder



THE BEARINGS SHOWN HEREON ARE BASED ON THE RECORDED PLAT OF RIDGEVIEW.
0 60 120 180

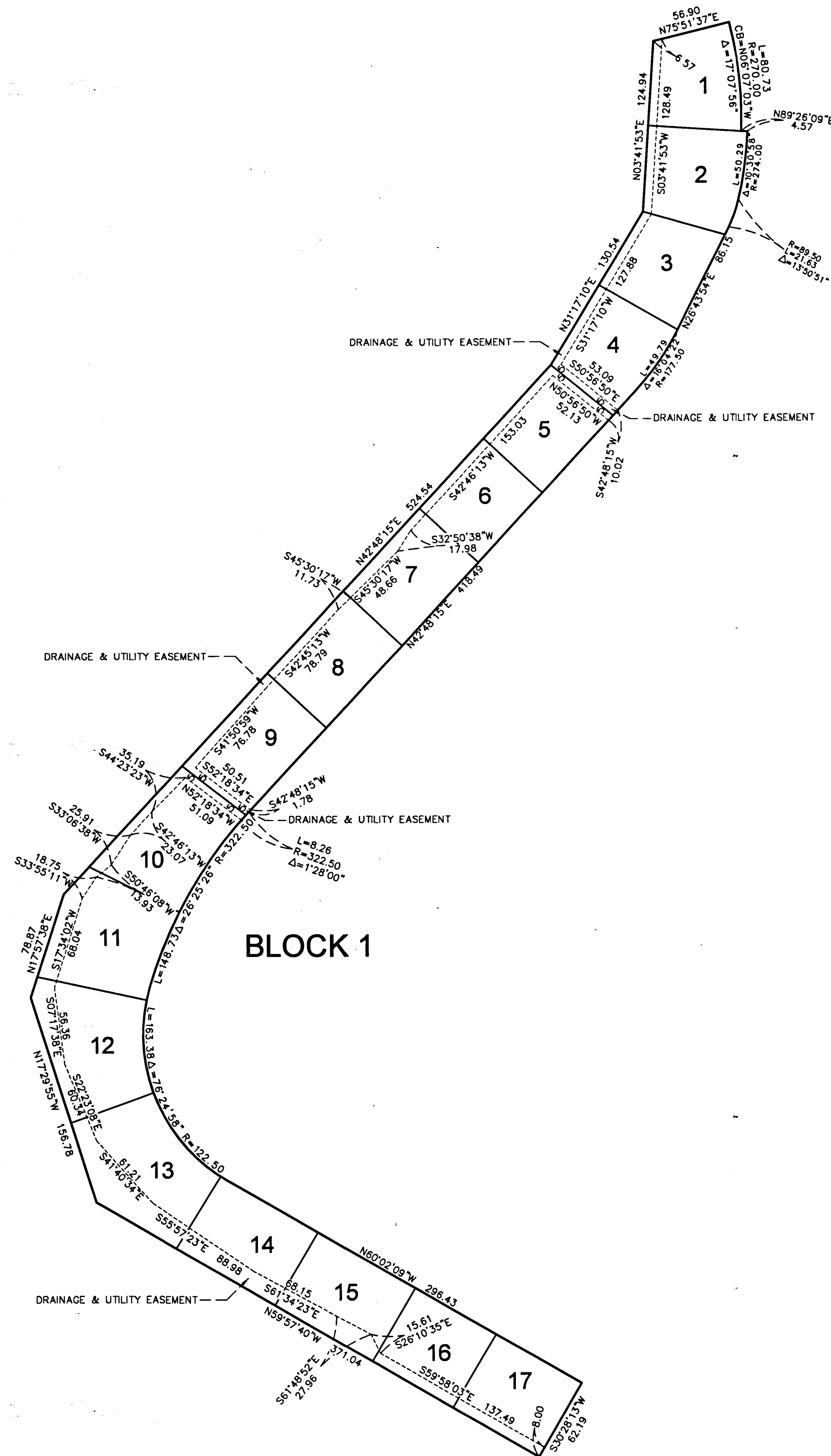
LEGEND

- DENOTES A PLACED 1" BY 18" IRON PIPE HAVING A PLASTIC CAP BEARING LAND SURVEYOR LICENSE NO. 47460.
- DENOTES FOUND IRON MONUMENT.

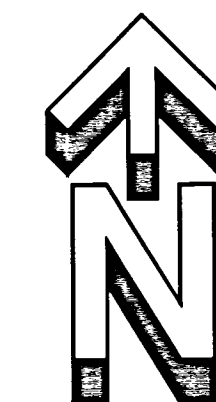
JOHNSON & SCOFIELD INC.
SURVEYING AND ENGINEERING
1203 MAIN STREET, RED WING, MN 55066
(651)388-1558

RIDGEVIEW HIGHLANDS SECOND

DRAINAGE AND UTILITY EASEMENT DETAIL



THE BEARINGS SHOWN HEREON ARE BASED ON THE RECORDED PLAT OF RIDGEVIEW.
0 60 120 180



JOHNSON & SCOFIELD INC.
SURVEYING AND ENGINEERING
1203 MAIN STREET, RED WING, MN 55066
(651)3881558