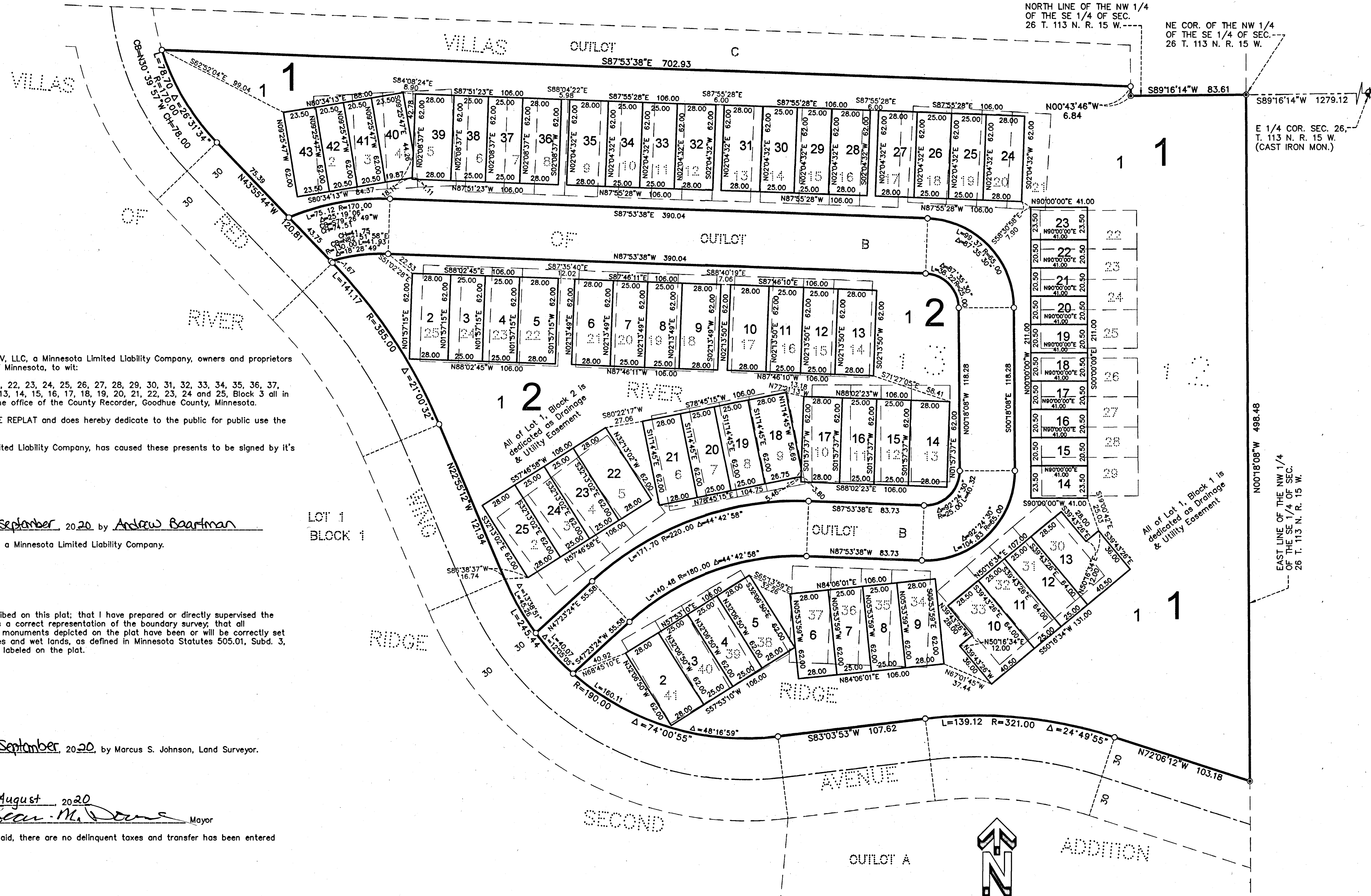
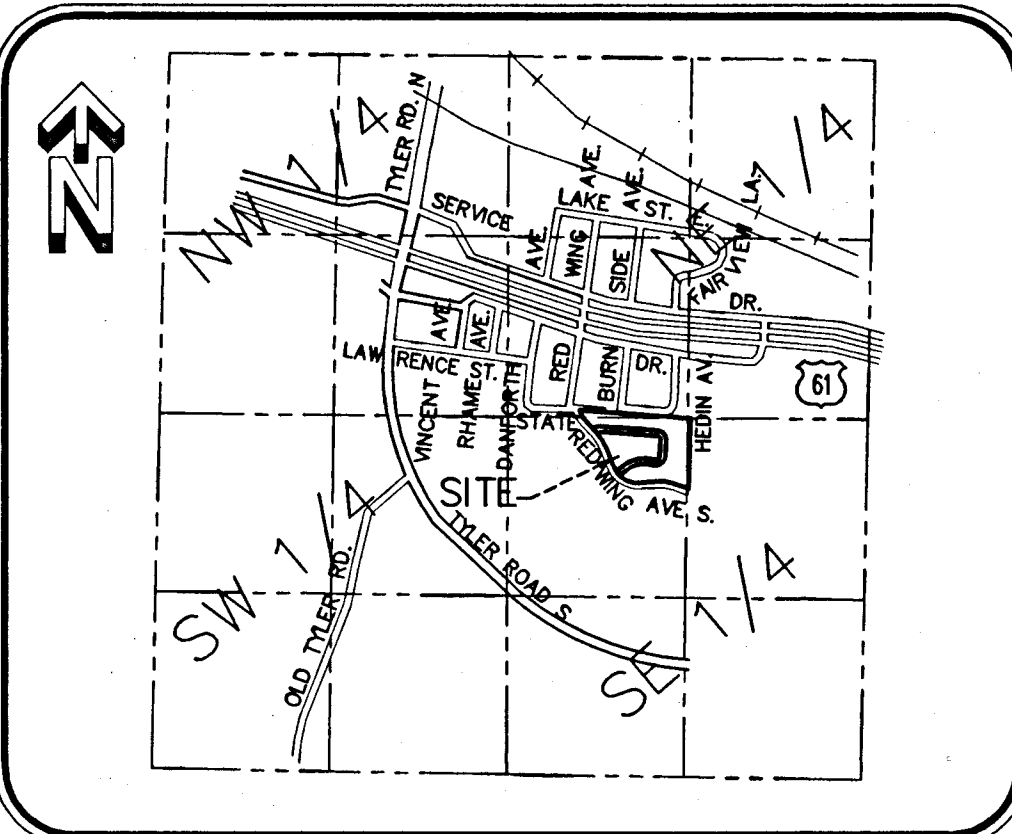


# VILLAS OF RIVER RIDGE REPLAT

VICINITY MAP

SEC 26, T 113 N, R 15 W  
NO SCALE



KNOW ALL PERSONS BY THESE PRESENTS: That Keller-Baartman Properties V, LLC, a Minnesota Limited Liability Company, owners and proprietors of the following described land, situated in the County of Goodhue, State of Minnesota, to wit:

Lots 1, 2, 3, 4, 5, 6, 7, 8, 9, 10, 11, 12, 13, 14, 15, 16, 17, 18, 19, 20, 21, 22, 23, 24, 25, 26, 27, 28, 29, 30, 31, 32, 33, 34, 35, 36, 37, 38, 39, 40 and 41, Block 2 and Lots 1, 2, 3, 4, 5, 6, 7, 8, 9, 10, 11, 12, 13, 14, 15, 16, 17, 18, 19, 20, 21, 22, 23, 24 and 25, Block 3 all in VILLAS OF RIVER RIDGE, according to the recorded plat thereof, on file in the office of the County Recorder, Goodhue County, Minnesota.

Has caused the same to be surveyed and platted as VILLAS OF RIVER RIDGE REPLAT and does hereby dedicate to the public for public use the drainage and utility easements as created by this plat.

In witness whereof said Keller-Baartman Properties V, LLC, a Minnesota Limited Liability Company, has caused these presents to be signed by its proper officers this 24th day of September, 2020.

By Andrew Baartman its Chief Manager

STATE OF MINNESOTA  
COUNTY OF Goodhue

The foregoing instrument was acknowledged before me this 24th day of September, 2020, by Andrew Baartman its Chief Manager of said Keller-Baartman Properties V, LLC, a Minnesota Limited Liability Company.

Nata Stagn  
Notary Public Goodhue County, Minnesota  
My Commission Expires January 31, 2026

I hereby certify:  
That I have surveyed or directly supervised the survey of the property described on this plat; that I have prepared or directly supervised the preparation of this plat as VILLAS OF RIVER RIDGE REPLAT; that this plat is a correct representation of the boundary survey; that all mathematical data and labels are correctly designated on the plat; that all monuments depicted on the plat have been or will be correctly set within one year; that as of the date of this certification all water boundaries and wet lands, as defined in Minnesota Statutes 505.01, Subd. 3, are shown and labeled on the plat; and that all public ways are shown and labeled on the plat.

Marcus S. Johnson 9228220  
Marcus S. Johnson, Land Surveyor  
Minnesota License Number 47460

STATE OF MINNESOTA  
COUNTY OF GOODHUE

The foregoing instrument was acknowledged before me this 24th day of September, 2020, by Marcus S. Johnson, Land Surveyor.

Nata Stagn  
Notary Public Goodhue County, Minnesota  
My commission expires January 31, 2026

Approved by the City Council of Red Wing, Minnesota, this 24th day of August, 2020  
SIGNED Dei & Swanson City Clerk Sean M. Doms Mayor

Taxes payable in the year 2020 on the land herein described have been paid, there are no delinquent taxes and transfer has been entered this 16 day of October, 2020

By B. J. Anderson  
Goodhue County Auditor/Treasurer  
By ADW Deputy

Pursuant to Chapter 389.09, laws of Minnesota, and Goodhue County Ordinance No. 2-78, this plat has been approved this 5th day of October, 2020

By Lisa M. Hanni  
Lisa M. Hanni, Goodhue County Surveyor

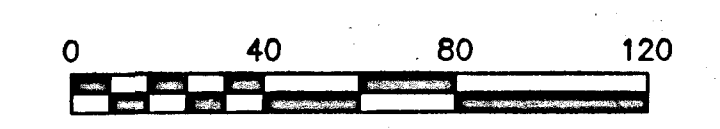
I hereby certify that the within instrument was filed in this office for record this 14th day of October, 2020, at 2:10 p.m. and was duly recorded as document number 660350

By Lisa M. Hanni  
Goodhue County Recorder

LEGEND

- DENOTES A FOUND 1" IRON PIPE.
- DENOTES A PLACED 1" BY 18" IRON PIPE, HAVING A PLASTIC CAP BEARING LAND SURVEYOR LICENSE NO. 47460.

BEARINGS ARE ORIENTED WITH THE PLAT OF VILLAS OF RIVER RIDGE



**JOHNSON & SCOFIELD INC.**  
**SURVEYING AND ENGINEERING**  
1203 MAIN STREET RED WING MN 55066  
651.388.1558 johnsonscotland.com