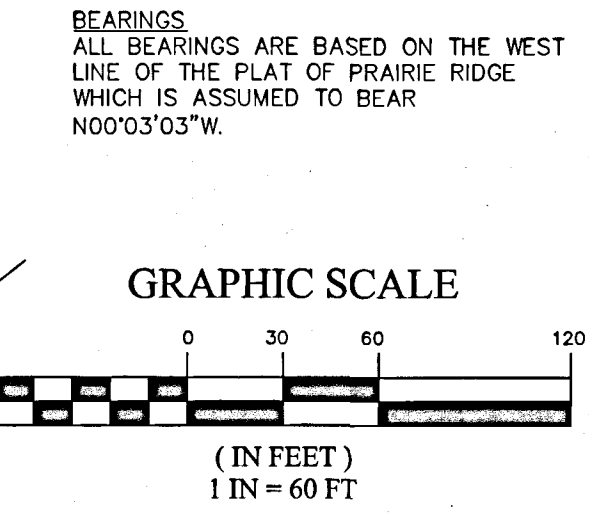
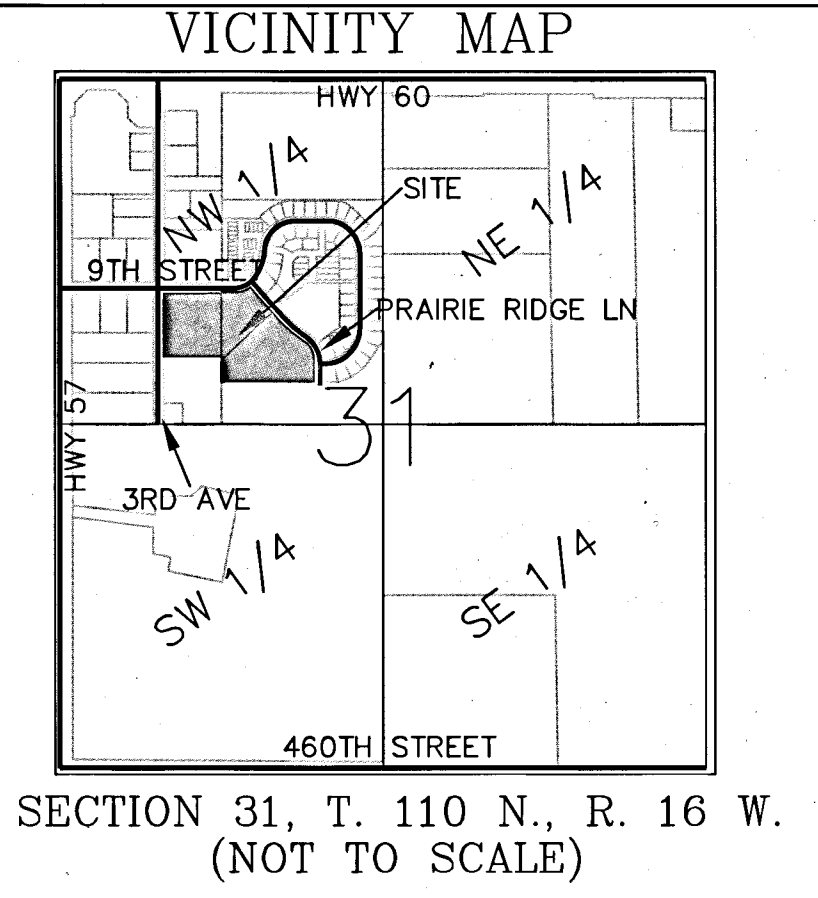
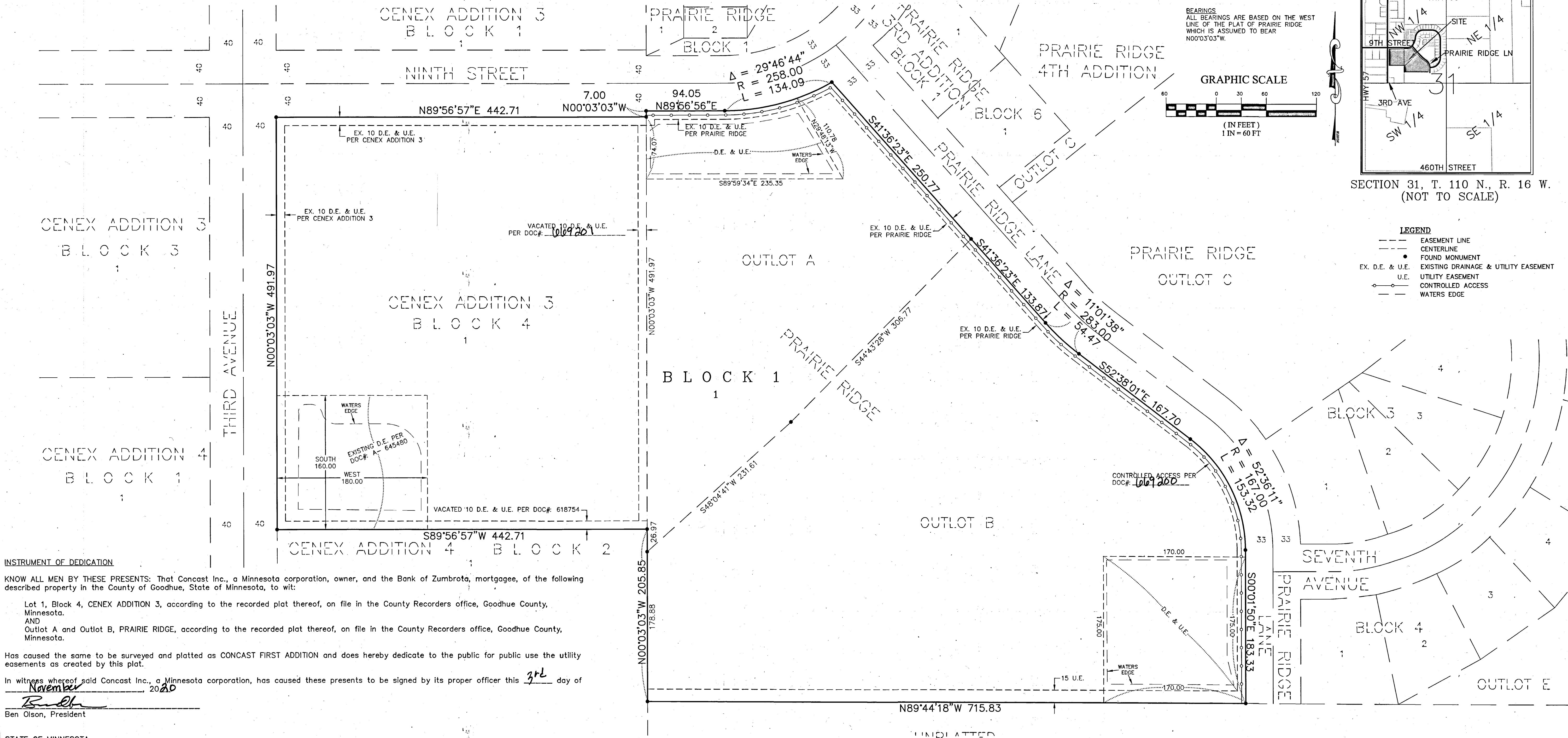


**"OFFICIAL PLAT"**  
**CONCAST FIRST ADDITION**



- LEGEND**
- EASEMENT LINE
  - CENTERLINE
  - FOUND MONUMENT
  - EX. D.E. & U.E.
  - U.E.
  - UTILITY EASEMENT
  - CONTROLLED ACCESS
  - WATERS EDGE



**INSTRUMENT OF DEDICATION**

KNOW ALL MEN BY THESE PRESENTS: That Concast Inc., a Minnesota corporation, owner, and the Bank of Zumbrota, mortgagee, of the following described property in the County of Goodhue, State of Minnesota, to wit:

Lot 1, Block 4, CENEX ADDITION 3, according to the recorded plat thereof, on file in the County Recorders office, Goodhue County, Minnesota.  
AND  
Outlot A and Outlot B, PRAIRIE RIDGE, according to the recorded plat thereof, on file in the County Recorders office, Goodhue County, Minnesota.

Has caused the same to be surveyed and platted as CONCAST FIRST ADDITION and does hereby dedicate to the public for public use the utility easements as created by this plat.

In witness whereof said Concast Inc., a Minnesota corporation, has caused these presents to be signed by its proper officer this 3rd day of November 2020

Ben Olson  
Ben Olson, President

STATE OF MINNESOTA  
COUNTY OF GOODHUE

This instrument was acknowledged before me this 3rd day of November 2020 by Ben Olson, President of Concast Inc., a Minnesota corporation.

Signed: Concast Inc.

Ben Olson  
Ben Olson, President

Jennifer L. Lappegaard  
Notary Public, Goodhue County, Minnesota  
My commission expires: Jan. 31, 2025

Jennifer L. Lappegaard  
Printed Name

In witness whereof said the Bank of Zumbrota, a Minnesota corporation, has caused these presents to be signed by its proper officer this \_\_\_\_\_ day of \_\_\_\_\_ 2020

Dan Kingsley  
Dan Kingsley, Vice President

STATE OF MINNESOTA  
COUNTY OF GOODHUE

This instrument was acknowledged before me this 3rd day of November 2020 by Dan Kingsley, Vice President, Bank of Zumbrota, a Minnesota corporation.

Mark King  
Notary Public, Goodhue County, Minnesota  
My commission expires: 11/25/25

Mark King  
Printed Name

**SURVEYOR'S CERTIFICATE**

I, Geoffrey G. Griffin do hereby certify that this plat was prepared by me or under my direct supervision; that I am a duly Licensed Land Surveyor in the State of Minnesota; that this plat is a correct representation of the boundary survey; that all mathematical data and labels are correctly designated on this plat; that all monuments depicted on this plat have been correctly set; that all water boundaries and wet lands, as defined in Minnesota Statutes, Section 505.01, Subd. 3, as of the date of this certificate are shown and labeled on this plat; and all public ways are shown and labeled on this plat.

Dated this 2 day of November, 2020

Geoffrey G. Griffin  
Geoffrey G. Griffin, Land Surveyor  
Minnesota License No. 21940

STATE OF MINNESOTA  
COUNTY OF OLMSTED  
The foregoing Surveyor's Certificate was acknowledged before me this 2 day of November 2020, by Geoffrey G. Griffin, Minnesota License No. 21940

Andrew Buck  
Notary Public, Olmsted County, Minnesota  
My commission expires: 01/31/2023

Andrew Buck  
Printed Name

**COUNTY SURVEYOR**

Pursuant to Chapter 389.09, laws of Minnesota, and Goodhue County Ordinance 2-78, this plat has been approved this 2nd day of November 2020.

Lisa M. Hanni  
Lisa M. Hanni, LS  
Goodhue County Surveyor

**CITY APPROVAL**

We do hereby certify that on the 3rd day of November 2020, the City Council of Wamamingo, Minnesota, approved this plat.

Mayor  
Administrator - Clerk

**GOODHUE COUNTY AUDITOR/TREASURER**

Taxes payable in the year 2020 on the land herein described have been paid; there are no delinquent taxes and transfer entered this 4 day of November 2020.

BT Anderson  
Goodhue County Auditor/Treasurer

**GOODHUE COUNTY RECORDER**

I hereby certify that this within instrument was filed in this office for record this 4th day of November 2020, at 8:00 AM, and was duly recorded as document number 169202

Lisa M. Hanni  
Lisa M. Hanni, LS  
Goodhue County Recorder

**G-Cubed** ENGINEERING SURVEYING PLANNING  
14070 Hwy 52 S.E.  
Chatfield, MN 55923  
Ph: 507-867-1666  
Fax: 507-867-1666  
www.gcto.com