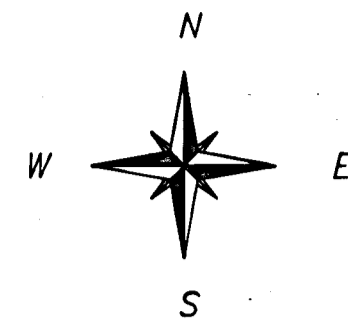
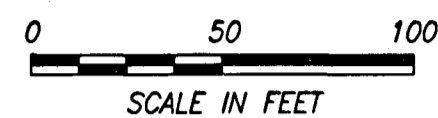
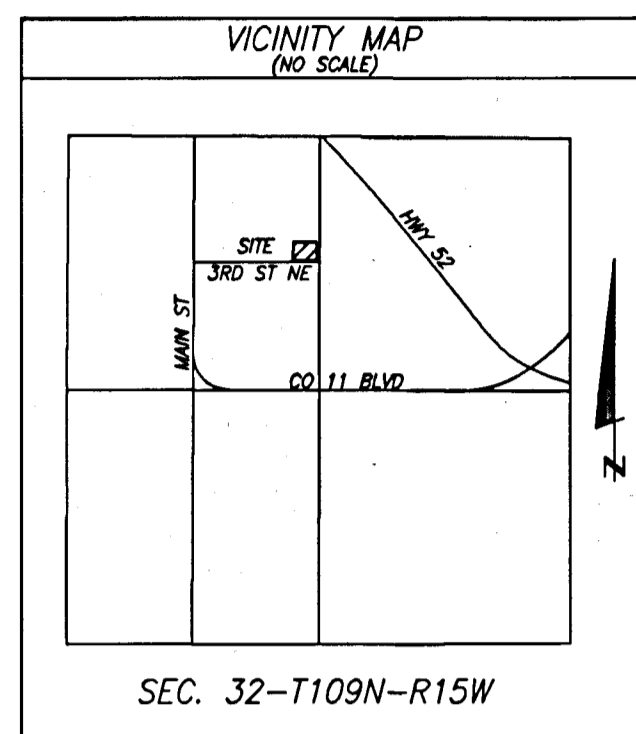


# GUSTIN SECOND ADDITION

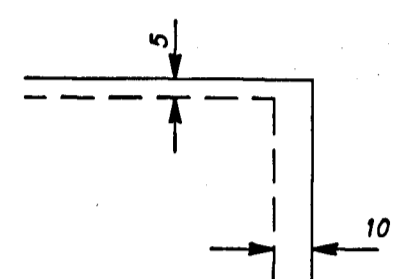


- DENOTES FOUND IRON MONUMENT
- DENOTES SET 1/2" X 15 INCH IRON REBAR MONUMENT WITH PLASTIC CAP MARKED RLS 22044

THE EAST LINE OF LOT 13  
G. GUSTIN'S ADDITION TO PINE ISLAND  
ASSUMES A BEARING OF N 00°11'36" E



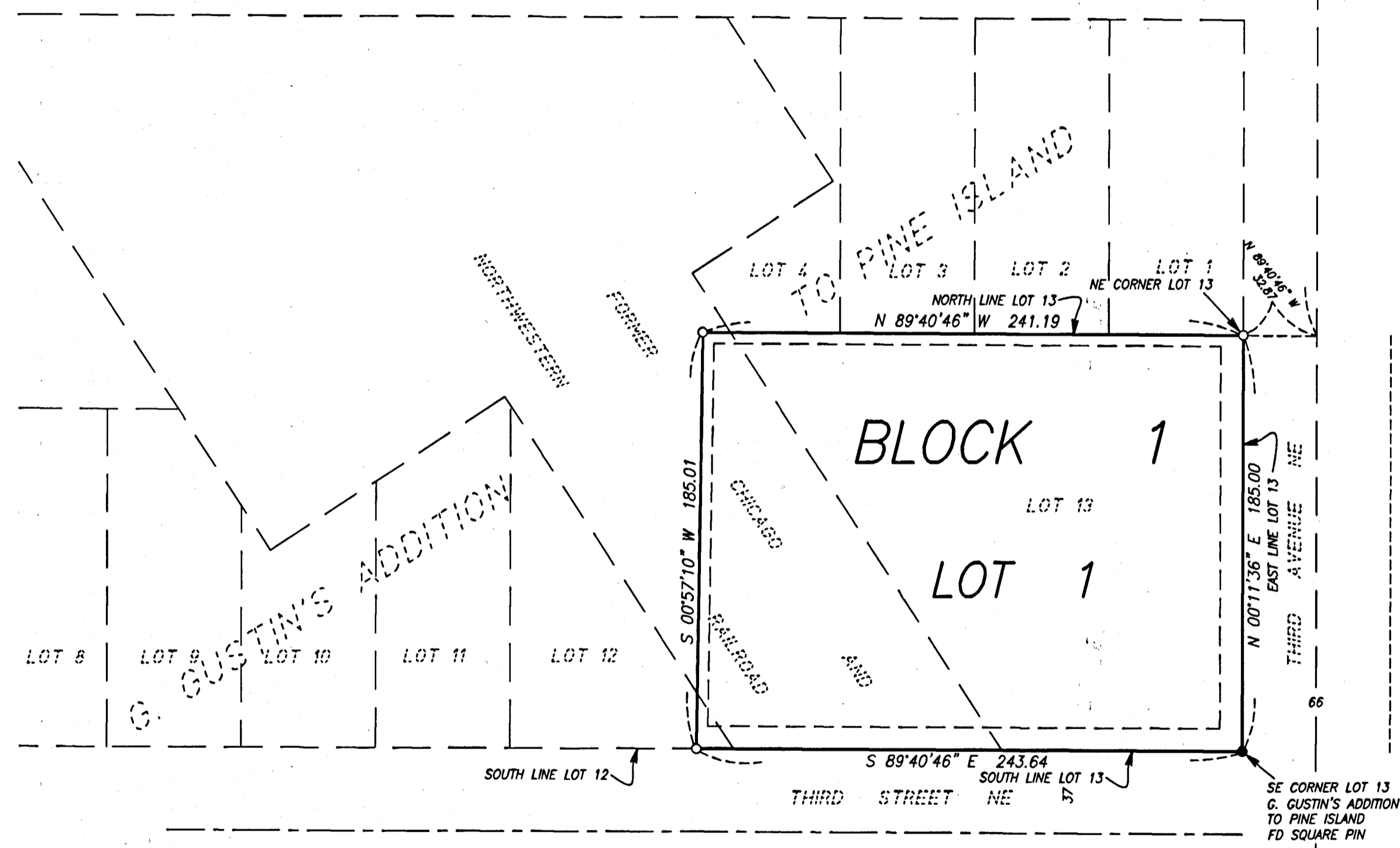
DRAINAGE AND UTILITY EASEMENTS ARE SHOWN THUS:



BEING 5 FEET IN WIDTH AND ADJOINING SIDE LOT LINES  
AND BEING 10 FEET IN WIDTH AND ADJOINING STREET  
LINES AS SHOWN ON THE PLAT

NE CORNER OF NW 1/4  
SEC. 32-T109N-R15W  
GOODHUE COUNTY MONUMENT

EAST LINE OF NW 1/4  
S 00°17'03" W 1096.15



Approved by the City Council of Pine Island, Minnesota, this 13<sup>th</sup> day of June, 2021.

Signed [Signature] Mayor  
[Signature] City Clerk

Taxes payable in the year 2021 on the land herein described have been paid, there are no delinquent taxes and transfer has been entered this 8<sup>th</sup> day of July, 2021.

B. J. Anderson  
Goodhue County Auditor/Treasurer  
By [Signature], Deputy

Pursuant to Chapter 389.09, laws of Minnesota, and Goodhue County Ordinance No. 2-78, this plat has been approved this 8<sup>th</sup> day of July, 2021.

[Signature]  
Goodhue County Surveyor

I hereby certify that the within instrument was filed in this office for record this 8<sup>th</sup> day of July, 2021, at 10 o'clock A.M. and was duly recorded as document number 676950, file number.

[Signature]  
Goodhue County Recorder

KNOW ALL PERSONS BY THESE PRESENTS: That Swangrist Properties, LLC, a Minnesota limited liability company, owner, Pine Island Bank, a Minnesota corporation, mortgagee, Pine Island Economic Development Authority, a political subdivision, mortgagee, and Ag Partners Services Cooperative, a Minnesota cooperative, owner, of the following described property situated in the County of Goodhue, State of Minnesota:

That part of Lot 12 and Lot 13, G. Gustin's Addition to Pine Island, according to the recorded plat thereof and part of the Northeast Quarter of the Northwest Quarter of Section 32, Township 109 North, Range 15 West, Goodhue County, Minnesota, described as follows: Beginning at the southeast corner of said Lot 13; thence North 00 degrees 11 minutes 36 seconds East (assumed bearing) along the east line of said Lot 13, a distance of 185.00 feet to the northeast corner of said Lot 13; thence North 89 degrees 40 minutes 46 seconds West, along the north line of said Lot 13 and its westerly extension, 241.19 feet; thence South 00 degrees 57 minutes 10 seconds West 185.01 feet to the south line of said Lot 12; thence South 89 degrees 40 minutes 46 seconds East, along said south line of Lot 12 and the south line of said Lot 13 and its westerly extension, 243.64 feet to the point of beginning.

Have caused the same to be surveyed and platted as GUSTIN SECOND ADDITION and do hereby dedicate to the public for public use the drainage and utility easements as created by this plat.

In witness whereof said Swangrist Properties, LLC, a Minnesota limited liability company, has caused these presents to be signed by its proper officer this 6<sup>th</sup> day of July, 2021.

Swangrist Properties, LLC  
[Signature]  
Marshall Lee Swanson, Chief Executive Officer

State of Minnesota  
County of Goodhue

This instrument was acknowledged before me on 7/6/2021 by Marshall Lee Swanson, Chief Executive Officer of Swangrist Properties, LLC, a Minnesota limited liability company.

[Signature]  
Notary Public, Goodhue County, Minnesota  
My commission expires 1/31/2024

In witness whereof said Pine Island Bank, a Minnesota corporation, has caused these presents to be signed by its proper officer this 7 day of July, 2021.

Signed: Pine Island Bank  
[Signature]  
Christopher Nelson, President

State of Minnesota  
County of Goodhue

This instrument was acknowledged before me on 7/7/2021 by Christopher Nelson, President of Pine Island Bank, a Minnesota corporation.

[Signature]  
Notary Public, Goodhue County, Minnesota  
My commission expires 2/31/2025

In witness whereof said Pine Island Economic Development Authority, a political subdivision, has caused these presents to be signed by its proper officer this 6<sup>th</sup> day of July, 2021.

Pine Island Economic Development Authority  
By [Signature]  
Director

State of Minnesota  
County of Goodhue

The foregoing instrument was acknowledged by me this 6<sup>th</sup> day of July, 2021, by Mitch Massman, Director of the Pine Island Economic Development Authority, a political subdivision, on behalf of the association.

[Signature]  
Notary Public, Goodhue County, Minnesota  
My commission expires 1/31/2024

In witness whereof said Ag Partners Services Cooperative, a Minnesota cooperative, has caused these presents to be signed by its proper officer this 7<sup>th</sup> day of July, 2021.

Ag Partners Services Cooperative  
[Signature]  
William T. Ahlbrecht, Chief Executive Officer

State of Minnesota  
County of Goodhue

This instrument was acknowledged before me on July 7, 2021 by William T. Ahlbrecht, Chief Executive Officer of Ag Partners Services Cooperative, a Minnesota cooperative.

[Signature]  
Notary Public, Goodhue County, Minnesota  
My commission expires 1/31/2023

I hereby certify that I have surveyed or directly supervised the survey of the property described on this plat; that I prepared or directly supervised the preparation of this plat of GUSTIN SECOND ADDITION; that this plat is a correct representation of the boundary survey; that all mathematical data and labels are correctly designated on the plat; that all monuments depicted on the plat have been correctly set; that as of the date of this certificate, all water boundaries and wetlands, as defined in Minnesota Statutes 505.01, Subd. 3, are correctly shown and labeled on the plat; and that all public ways are shown and labeled on the plat.

[Signature]  
David G. Rapp, Land Surveyor  
Minnesota License Number 22044

STATE OF MINNESOTA  
COUNTY OF GOODHUE

The foregoing Surveyor's Certificate was acknowledged before me this 20<sup>th</sup> day of June, 2021 by David G. Rapp, Land Surveyor.

[Signature]  
Notary Public, Goodhue County, Minnesota  
My commission expires 1-31-2025