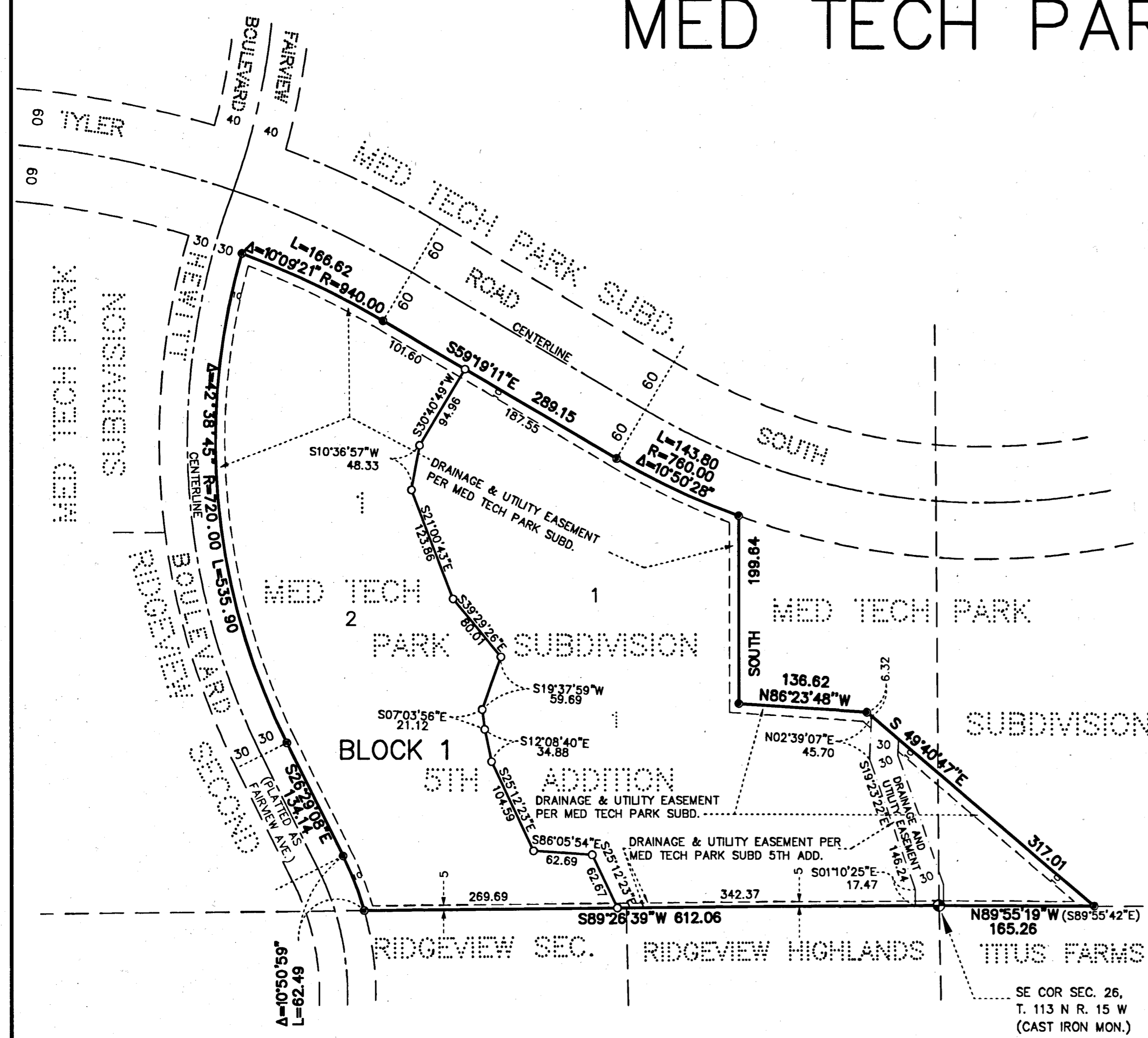
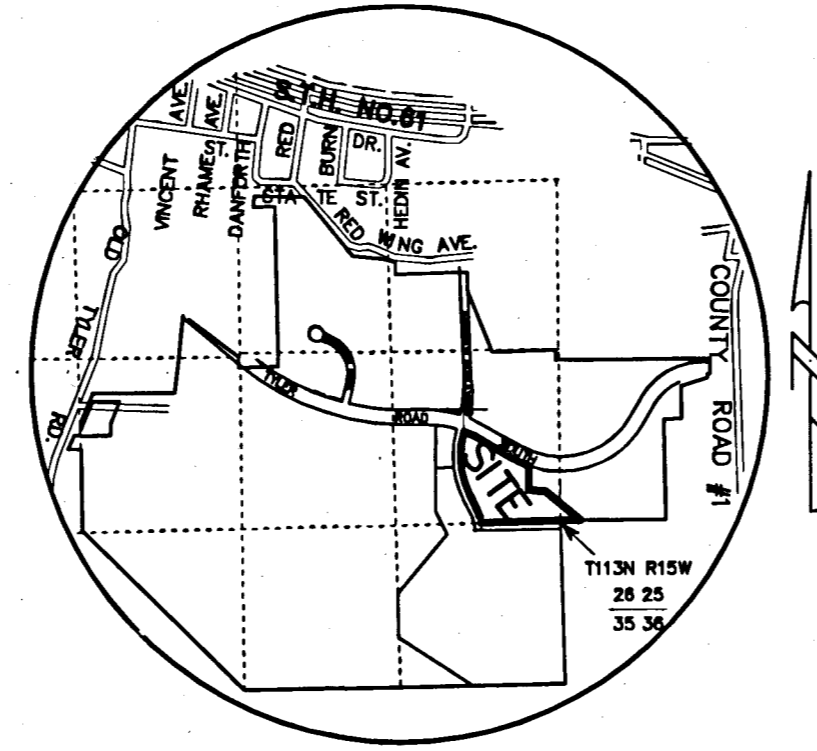


# MED TECH PARK SUBDIVISION 7TH ADDITION



VICINITY MAP  
NO SCALE



- DENOTES A PLACED 1" BY 18" IRON PIPE HAVING A PLASTIC CAP BEARING LAND SURVEYOR LICENSE NO. 15473.
- DENOTES FOUND IRON MONUMENT.
- ⊙ DENOTES FOUND COUNTY MONUMENT.
- (S89°55'42"E) DENOTES BEARING OF RECORD.

BEARINGS ARE ORIENTED TO THE PLAT OF MED TECH PARK SUBDIVISION 5TH ADDITION

KNOW ALL PERSONS BY THESE PRESENTS: That Keller-Bartman Properties <sup>VE</sup> LLC, a Minnesota Limited Liability Company, owners and proprietors and Minnwest Bank, a Minnesota banking corporation, Mortgagee of the following described land, situated in the County of Goodhue, State of Minnesota, to wit:

Lot 1, Block 1, MED TECH PARK SUBDIVISION 5TH ADDITION, according to the recorded plat thereof, on file in the office of the County Recorder, Goodhue County, Minnesota.

Has caused the same to be surveyed and platted as MED TECH PARK SUBDIVISION 7TH ADDITION.

In witness whereof said Keller-Bartman Properties <sup>VE</sup> LLC, a Minnesota Limited Liability Company, has caused these presents to be signed by it's proper officers this 10<sup>th</sup> day of May, 2021.

By [Signature] Its member

STATE OF MINNESOTA  
COUNTY OF Goodhue

The foregoing instrument was acknowledged before me this 10<sup>th</sup> day of May, 2021 by Andy Baartman  
Its member of said Keller-Bartman Properties <sup>VE</sup> LLC, a Minnesota Limited Liability Company.

[Signature]  
Notary Public Goodhue County, Minnesota  
My Commission Expires January 31, 2026

In witness whereof said Minnwest Bank, a Minnesota banking corporation, has caused these presents to be signed by it's proper officers this 23<sup>rd</sup> day of July, 2021.

By [Signature] Its SVP

STATE OF MINNESOTA  
COUNTY OF Goodhue

The foregoing instrument was acknowledged before me this 23<sup>rd</sup> day of July, 2021 by Greg Hohlen  
Its SVP of said Minnwest Bank, a Minnesota banking corporation.

[Signature]  
Notary Public Goodhue County, Minnesota  
My Commission Expires January 31, 2026

I hereby certify:  
That I have surveyed or directly supervised the survey of the property described on this plat; that I have prepared or directly supervised the preparation of this plat as MED TECH PARK SUBDIVISION 7TH ADDITION; that this plat is a correct representation of the boundary survey; that all mathematical data and labels are correctly designated on the plat; that all monuments depicted on the plat have been or will be correctly set within one year; that as of the date of this certification all water boundaries and wet lands, as defined in Minnesota Statutes 505.01, Subd. 3, are shown and labeled on the plat; and that all public ways are shown and labeled on the plat.

[Signature] 2/30/2021  
Marcus S. Johnson, Land Surveyor  
Minnesota License Number 47460

STATE OF MINNESOTA  
COUNTY OF GOODHUE

The foregoing instrument was acknowledged before me this 30<sup>th</sup> day of April, 2021, by Marcus S. Johnson, Land Surveyor.

[Signature]  
Notary Public Goodhue County, Minnesota  
My commission expires January 31, 2026

Approved by the City Council of Red Wing, Minnesota, this 22<sup>ND</sup> day of FEBRUARY, 2021.

SIGNED [Signature] City Clerk [Signature] Mayor

Taxes payable in the year 2022 on the land herein described have been paid, there are no delinquent taxes and transfer has been entered this 23<sup>rd</sup> day of February, 2022.


By [Signature] Deputy  
Goodhue County Auditor/Treasurer

Pursuant to Chapter 389.09, laws of Minnesota, and Goodhue County Ordinance No. 2-78, this plat has been approved this 3<sup>rd</sup> day of March, 2022.

By [Signature]  
Lisa M. Hanni, Goodhue County Surveyor

I hereby certify that the within instrument was filed in this office for record this 3<sup>rd</sup> day of March, 2022 at 9:56am and was duly recorded as document number 683537.

By [Signature]  
Goodhue County Recorder



**JOHNSON & SCOFIELD INC.**  
SURVEYING AND ENGINEERING

1203 MAIN STREET RED WING MN 55066  
651.388.1558 johnsonscfield.com