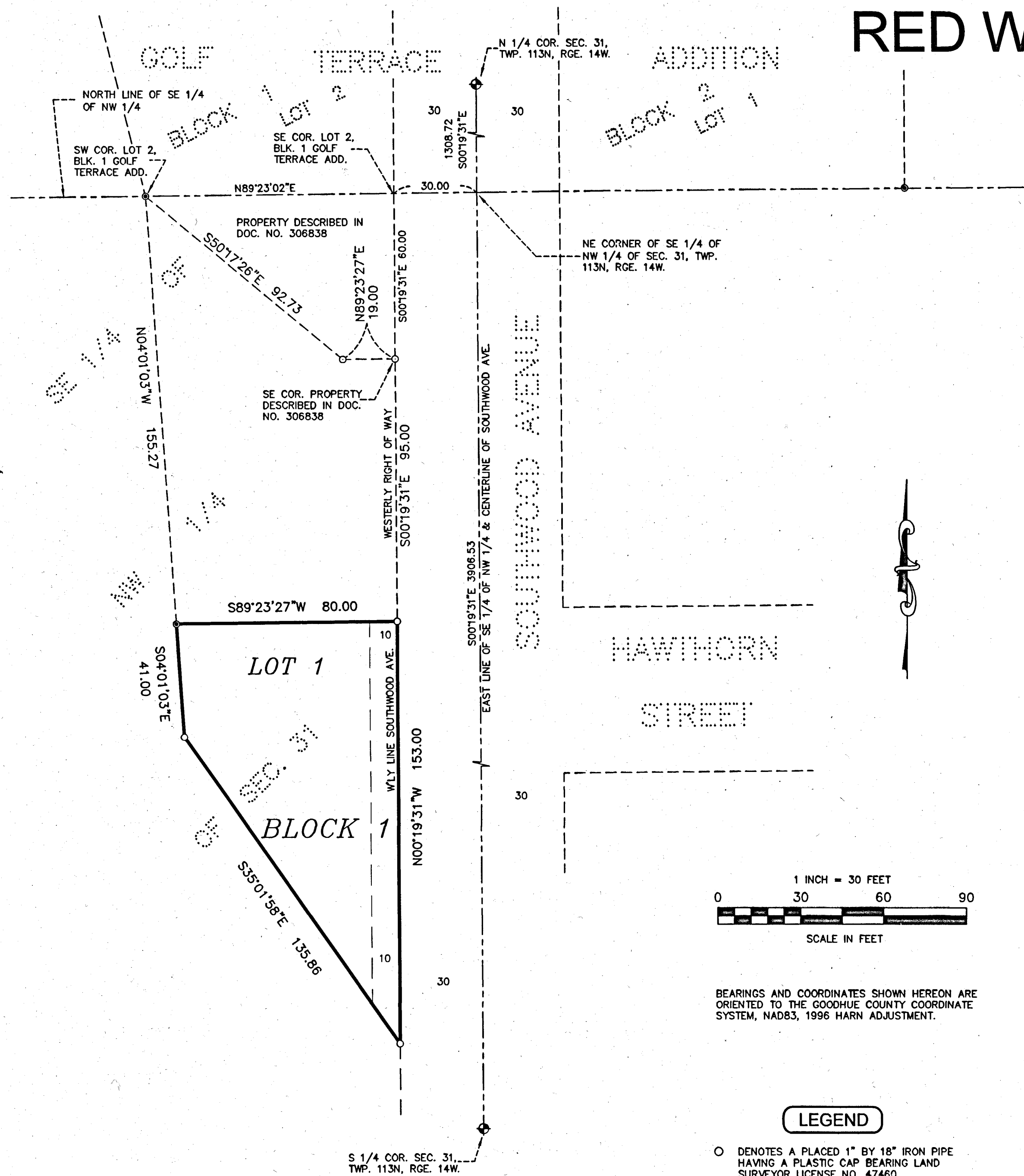
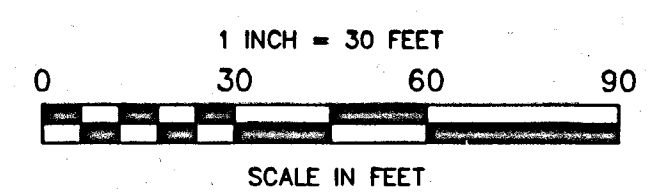
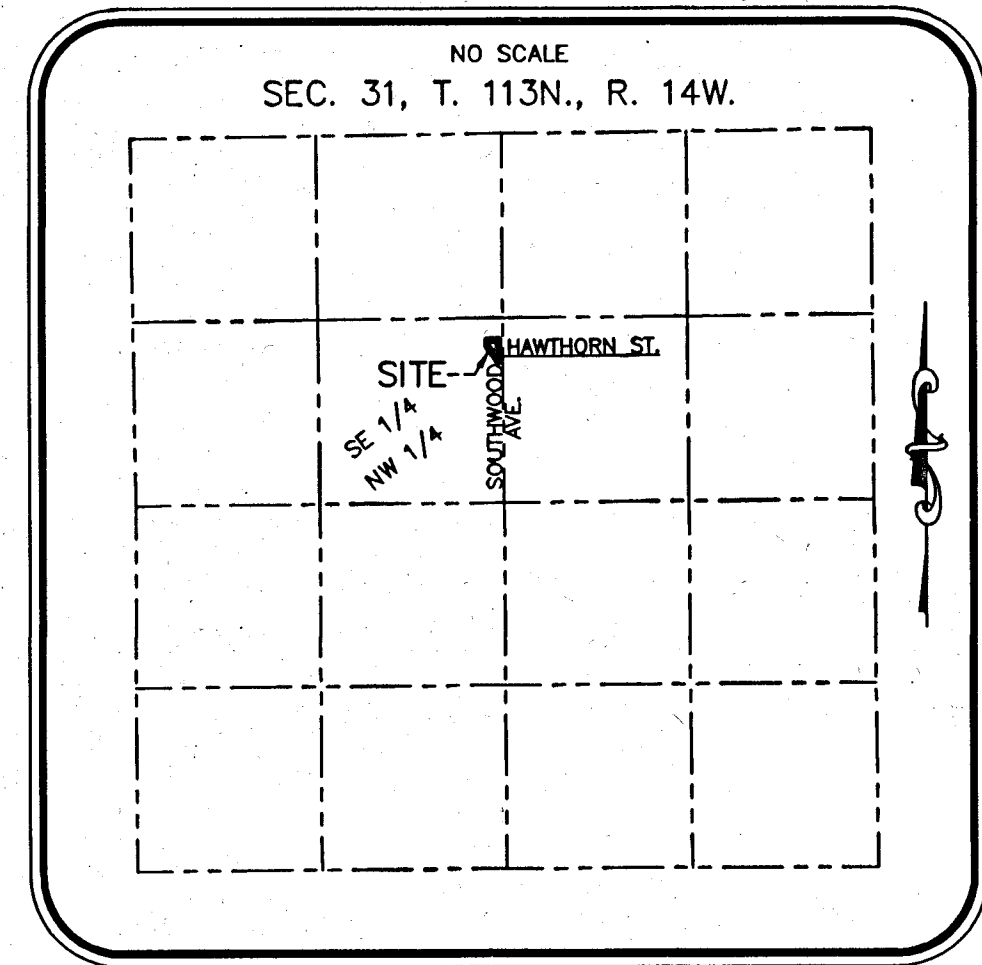


RED WING GOLF CLUB ADDITION



VICINITY MAP



BEARINGS AND COORDINATES SHOWN HEREON ARE ORIENTED TO THE GOODHUE COUNTY COORDINATE SYSTEM, NAD83, 1996 HARN ADJUSTMENT.

LEGEND

- DENOTES A PLACED 1" BY 18" IRON PIPE HAVING A PLACED PLASTIC CAP BEARING LAND SURVEYOR LICENSE NO. 47460.
- DENOTES FOUND IRON MONUMENT.
- ⊕ DENOTES GOODHUE CO. SECTION CORNER.

DRAINAGE AND UTILITY EASEMENTS ARE SHOWN THUS:



BEING 10 FEET IN WIDTH AND ADJOINING SOUTHWOOD AVENUE, AS SHOWN ON THE PLAT.

KNOW ALL PERSONS BY THESE PRESENTS: That Red Wing Golf Course, LLC, a Minnesota Limited Liability Company, and Community Resource Bank, a Minnesota Chartered Corporation, mortgagee of the following described property:

That part of the Southeast Quarter of the Northwest Quarter of Section 31, Township 113 North, Range 14 West, Goodhue County, Minnesota, described as follows:

Commencing at the southeast corner of Lot 2, Block 1, GOLF TERRACE ADDITION, according to the recorded plat thereof, on file in the office of the County Recorder, Goodhue County, Minnesota; thence South 00 degrees 19 minutes 31 seconds East, (bearings are oriented to the Goodhue County coordinate system, NAD 1983, 1996 Harn adjustment), along the westerly line of Southwood Avenue, being a line parallel with and distant 30.00 feet westerly of the east line of said Southeast Quarter of the Northwest Quarter, a distance of 60.00 feet to the southeast corner of the property described in Document Number 306838, on file in the office of the County Recorder, Goodhue County, Minnesota, thence continue South 00 degrees 19 minutes 31 seconds East, along said westerly line of Southwood Avenue, a distance of 95.00 feet to the point of beginning of the land to be described; thence South 89 degrees 23 minutes 27 seconds West, a distance of 80.00 feet; thence South 04 degrees 01 minutes 03 seconds East, a distance of 41.00 feet; thence South 35 degrees 01 minutes 58 seconds East, a distance of 135.86 feet to the westerly line of said Southwood Avenue; thence North 00 degrees 19 minutes 31 seconds West, along said westerly line, a distance of 153.00 feet to the point of beginning.

Have caused the same to be surveyed and platted as RED WING GOLF CLUB ADDITION and do hereby dedicate to the public for public use the drainage and utility easements as created herewith, as shown on this plat.

In witness whereof said Red Wing Golf Course, LLC, a Minnesota Limited Liability Company, have caused these presents to be signed by its proper officer this 29th day of April, 2022

Signed: Red Wing Golf Course, LLC
William F. Holst its sole member

STATE OF MINNESOTA
COUNTY OF GOODHUE

This Instrument was acknowledged before me on this 29th day of April, 2022 by William Holst its sole member of Red Wing Golf Course, LLC, a Minnesota Limited Liability Company.

Kate Engen
 Notary Public Goodhue County, Minnesota
 My Commission Expires January 31, 2026

In witness whereof said Community Resource Bank, a Minnesota Chartered Corporation, has caused these presents to be signed by its proper officer this 29 day of April, 2022

Mark Brown its Senior Vice Pres
 Community Resource Bank

STATE OF MINNESOTA
COUNTY OF GOODHUE

This Instrument was acknowledged before me on this 29th day of April, 2022 by Martin Benson its Senior Vice President of Community Resource Bank, a Minnesota Chartered Corporation, on behalf of said corporation.

Kate Engen
 Notary Public Goodhue County, Minnesota
 My Commission Expires January 31, 2026

I hereby certify:
 That I have surveyed or directly supervised the survey of the property described on this plat; that I prepared or directly supervised the preparation of this plat as RED WING GOLF CLUB ADDITION; that this plat is a correct representation of the boundary survey; that all mathematical data and labels are correctly designated on the plat; that all monuments depicted on the plat have been correctly set; that as of the date of this certificate, all water boundaries and wetlands, as defined in Minnesota Statutes 505.01, Subd. 3, are shown and labeled on the plat; and that all public ways are shown and labeled on the plat.

Dated this 29 day of April, 2022

Marcus S. Johnson
 Professional Land Surveyor
 Minnesota License Number 47460

STATE OF MINNESOTA
COUNTY OF GOODHUE

This Instrument was acknowledged before me on this 22nd day of April, 2022 by Marcus S. Johnson, Professional Land Surveyor.

Kate Engen
 Notary Public Goodhue County, Minnesota
 My Commission Expires January 31, 2026

This plat of RED WING GOLF CLUB ADDITION was approved and accepted by the City Council of the City of Red Wing, Minnesota at a regular meeting thereof held this 28th day of February, 2022, and said plat is in compliance with the provisions of Minnesota Statutes, Section 505.03, Subd. 2.

City Council, City of Red Wing, Minnesota
 By: Alexi R. Johnson City Clerk
Mike Pluckin Mayor

Taxes payable in the year 2022 on the land herein described have been paid, there are no delinquent taxes and transfer has been entered this 30th day of June, 2022

By: B. J. Anderson
 Goodhue County Auditor/Treasurer
 By: [Signature] Deputy

Pursuant to Chapter 389.09, laws of Minnesota, and Goodhue County Ordinance No. 2-78, this plat has been approved this 18th day of June, 2022

By: Lisa M. Hanni
 Lisa M. Hanni, Goodhue County Surveyor

I hereby certify that the within Instrument was filed in this office for record this 26th day of June, 2022

at 10:07 a.m. and was duly recorded as document number 691511

By: [Signature]
 Goodhue County Recorder

JOHNSON & SCOFIELD INC.
 SURVEYING AND ENGINEERING
 1203 MAIN STREET, RED WING, MN 55066
 (651)3881558