

NW CORNER OF NE 1/4  
SEC. 6-T112N-R14W  
GOODHUE COUNTY MONUMENT

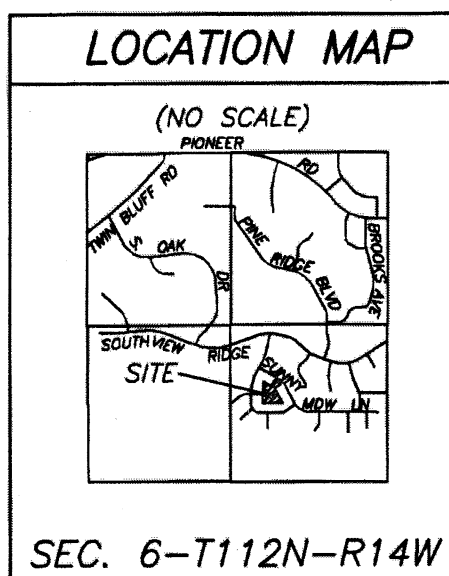
# HI PARK HEIGHTS 5TH REPLAT

68°58'14" W 127.100

N 00°14'27" E 131.14

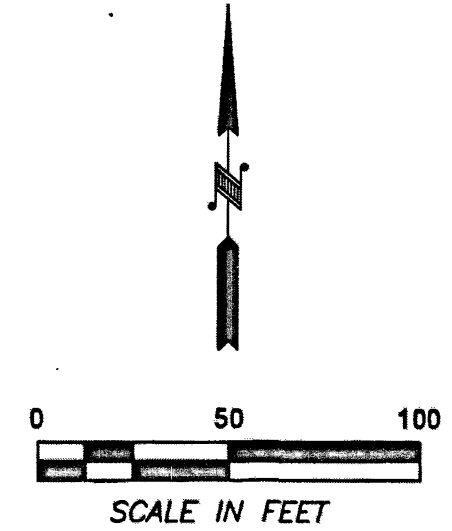
SW CORNER OF SE 1/4  
SEC. 6-T112N-R14W  
GOODHUE COUNTY MONUMENT

N 00°14'27" E 131.14

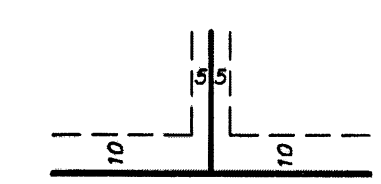


- DENOTES FOUND IRON MONUMENT
- DENOTES SET 1/2" X 15 INCH REBAR MONUMENT WITH PLASTIC CAP MARKED RLS 22044

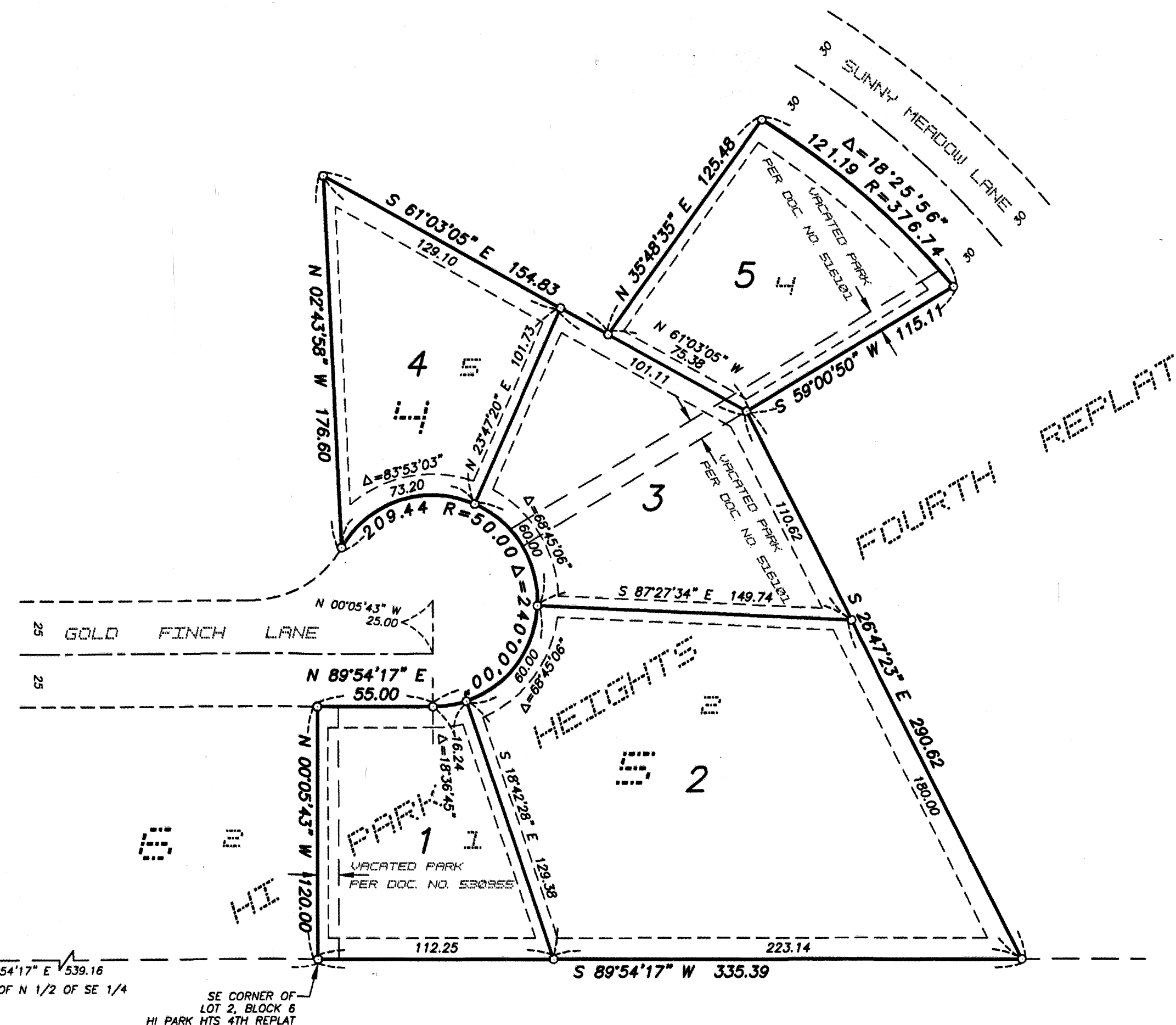
THE SOUTH LINE OF THE NORTH HALF OF THE SE 1/4 OF SEC. 6-T112N-R14W ASSUMES A BEARING OF N 89°54'17" E



DRAINAGE AND UTILITY EASEMENTS ARE SHOWN THUS:



BEING TEN FEET IN WIDTH, UNLESS OTHERWISE INDICATED, AND ADJOINING STREET LINES AND REAR LOT LINES, AND FIVE FEET IN WIDTH, UNLESS OTHERWISE INDICATED, AND ADJOINING SIDE LOT LINES, AS SHOWN ON THE PLAT.



KNOW ALL PERSONS BY THESE PRESENTS: That J & L Developers, Inc., a Minnesota Corporation, owners and proprietors of the following described property situated in the County of Goodhue, State of Minnesota, to wit:

Lot 1 and Lot 2, Block 5, HI PARK HEIGHTS 4TH REPLAT, according to the recorded plat thereof, and the vacated park land lying adjacent to the west line of said Lot 1, Block 5 and the park land lying adjacent to the north line of said Lot 2, Block 5.  
Also  
Lot 4 and Lot 5, Block 4, HI PARK HEIGHTS 4TH REPLAT, according to the recorded plat thereof, and the vacated park land lying adjacent to the south line of said Lot 4, Block 4.

Have caused the same to be surveyed and platted as HI PARK HEIGHTS 5TH REPLAT and do hereby dedicate to the public for public use the drainage and utility easements as created by this plat.

In witness whereof said J & L Developers, Inc., has caused these presents to be signed by its proper officers and its corporate seal to be hereunto affixed this 30 day of APRIL 2024

By Vicki Lawrence its President and Larry Kull its Treasurer

State of Minnesota  
County of Goodhue

This instrument was acknowledged before me on 30 APRIL, 2024 by Vicki Lawrence the PRESIDENT and LARRY KULL the TREASURER of J & L Developers, Inc., a Minnesota Corporation, on behalf of said Corporation.

Richard A. Gorum (signed)  
Richard A. Gorum (print)  
Notary Public, Goodhue County, MN  
My Commission expires 1-31-2025

I hereby certify that I have surveyed or directly supervised the survey of the property described on this plat; that I prepared or directly supervised the preparation of this plat of HI PARK HEIGHTS 5TH REPLAT; that this plat is a correct representation of the boundary survey; that all mathematical data and labels are correctly designated on the plat; that all monuments depicted on the plat have been correctly set; that as of the date of this certificate, all water boundaries and wetlands, as defined in Minnesota Statutes 505.01, Subd. 3, are correctly shown and labeled on the plat; and that all public ways are shown and labeled on the plat.

David G. Rapp  
David G. Rapp, Land Surveyor  
Minnesota License Number 22044

STATE OF MINNESOTA  
COUNTY OF GOODHUE

The foregoing Surveyor's Certificate was acknowledged before me this 18 day of April, 2024, by David G. Rapp, Land Surveyor.

Dorenda Deuster (sign)  
Dorenda A. Deuster (print)  
Notary Public, Goodhue County, Minnesota  
My commission expires 1-31-2025

CITY OF RED WING

Approved by the Planning Commission of the City of Red Wing, Minnesota, on the \_\_\_\_\_ day of \_\_\_\_\_, 20\_\_\_\_

\_\_\_\_\_, Chair \_\_\_\_\_, Secretary

Approved by the City Council of the City of Red Wing, Minnesota, on the 16<sup>th</sup> day of February, 2024, and is in compliance with the provisions of Section 505.03, Subdivision 2, Minnesota Statutes.

John Klein, Mayor Tim S. Swanson, Administrator City Clerk

GOODHUE COUNTY SURVEYOR

I hereby certify that in accordance with Minnesota Statutes, 505.021, Subd. 11, this plat has been reviewed and approved this 13<sup>th</sup> day of May, 2024

Lisa Hanni  
Lisa Hanni  
Goodhue County Surveyor

GOODHUE COUNTY AUDITOR/TREASURER

Pursuant to Minnesota Statutes, Section 505.021, Subd. 9, taxes payable in the year 2024 on the land hereinbefore described have been paid. Also, pursuant to Minnesota Statutes, Section 272.12, there are no delinquent taxes and transfer entered this 16<sup>th</sup> day of July, 2024.

L. Deuster  
Goodhue County Auditor / Treasurer

GOODHUE COUNTY RECORDER

County Recorder, County of Goodhue, State of Minnesota  
I hereby certify that this plat of HI PARK HEIGHTS 5TH REPLAT was filed in the office of the County Recorder for public record on this 14 day of May, 2024, at 11:11 o'clock A.M. and was duly recorded as Document Number 699065.

Lisa Hanni  
Lisa Hanni  
Goodhue County Recorder

S 89°57'12" E 2635.07  
SOUTH LINE OF SE 1/4

SE CORNER OF SE 1/4  
SEC. 6-T112N-R14W  
GOODHUE COUNTY MONUMENT

RAPP LAND SURVEYING, INC.  
45967 HIGHWAY 56 BLVD  
KENYON, MN 55946  
612-532-1263

425-B