

WOJ FARM ADDITION

KNOW ALL PERSONS BY THESE PRESENTS: That WOJ Farm, Inc., a Minnesota corporation, owner, and First Farmers & Merchants Bank, a Minnesota corporation, mortgagee, of the following described property situated in the County of Goodhue, State of Minnesota, to wit:

The Southwest Quarter and the West Half of the Southeast Quarter, all in Section 26, Township 112 North, Range 14 West, Goodhue County, Minnesota, EXCEPT the North 2 rods of the Southwest Quarter of said Section 26.

Has caused the same to be surveyed and platted as WOJ FARM ADDITION and does hereby dedicate to the public for public use the public ways as created by this plat.

In witness whereof said WOJ Farm, Inc., a Minnesota corporation, has caused these presents to be signed by its proper officer this 3 day of May, 2025.

Signed: WOJ Farm, Inc.

Duane J. Wojcik V.P.
Duane J. Wojcik, Vice President

State of Minnesota
County of Goodhue

This instrument was acknowledged before me on May 3, 2025, by Duane J. Wojcik, Vice President, of WOJ Farm, Inc., a Minnesota corporation, on behalf of the corporation.

Kimberly Erickson (signed)
Kimberly Erickson (print)
Notary Public, Minnesota
My Commission expires January 31, 2026

In witness whereof said First Farmers & Merchants Bank, a Minnesota corporation, has caused these presents to be signed by its proper officer this 5th day of May, 2025.

Signed: First Farmers & Merchants Bank

Paul J. Drackley - President
Paul J. Drackley, President

State of Minnesota
County of Goodhue

This instrument was acknowledged before me on May 5th, 2025, by Paul J. Drackley, President of First Farmers & Merchants Bank, a Minnesota corporation.

Lisa M. MacRae (signed)
Lisa M. MacRae (print)
Notary Public, Minnesota
My Commission expires 1-31-2027

I hereby certify that I have surveyed or directly supervised the survey of the property described on this plat; that I prepared or directly supervised the preparation of this plat of WOJ FARM ADDITION; that this plat is a correct representation of the boundary survey; that all mathematical data and labels are correctly designated on the plat; that all required monuments depicted on the plat will be correctly set within one year of the recording of this plat; that as of the date of this certificate, all water boundaries and wet land, as defined in Minnesota Statutes 505.01, Subd. 3, are correctly shown and labeled on the plat; and that all public ways are shown and labeled on the plat.

David G. Rapp
David G. Rapp, Land Surveyor
Minnesota License Number 22044

STATE OF MINNESOTA
COUNTY OF GOODHUE

The foregoing Survey of Certificate was acknowledged before me this 1 day of May, 2025, by David G. Rapp, Land Surveyor.

David G. Rapp (sign)
Brenda Rapp (print)
Notary Public, Goodhue County, Minnesota
My commission expires January 31, 2026

HAY CREEK TOWN BOARD

Approved by the Hay Creek Township Board this 9th day of May, 2025.

Signed Susan Cushman
Chairperson Hay Creek Township Board

GOODHUE COUNTY BOARD

Approved by the Goodhue County Commissioners at their May 6th, 2025 County Board meeting.

Signed Bob Fisher Chairperson Signed Scott Emerson County Administrator

ATTORNEY APPROVAL

I do hereby certify that proper evidence of title has been presented to and examined by me and I approve the plat as to form and execution this 12th day of May, 2025.

By Steve Z. Clark, County Attorney

GOODHUE COUNTY SURVEYOR

I hereby certify that in accordance with Minnesota Statutes, 505.021, Subd. 11, this plat has been reviewed and approved this 9th day of May, 2025.

Jeff Ekblad
Jeff Ekblad
Goodhue County Surveyor

GOODHUE COUNTY AUDITOR/TREASURER

Pursuant to Minnesota Statutes, Section 505.021, Subd. 9, taxes payable in the year 2025 on the land hereinbefore described have been paid. Also, pursuant to Minnesota Statutes, Section 272.12, there are no delinquent taxes and transfer entered this 7th day of May, 2025.

L. Dahlberg by W. D. D.
Goodhue County Auditor / Treasurer

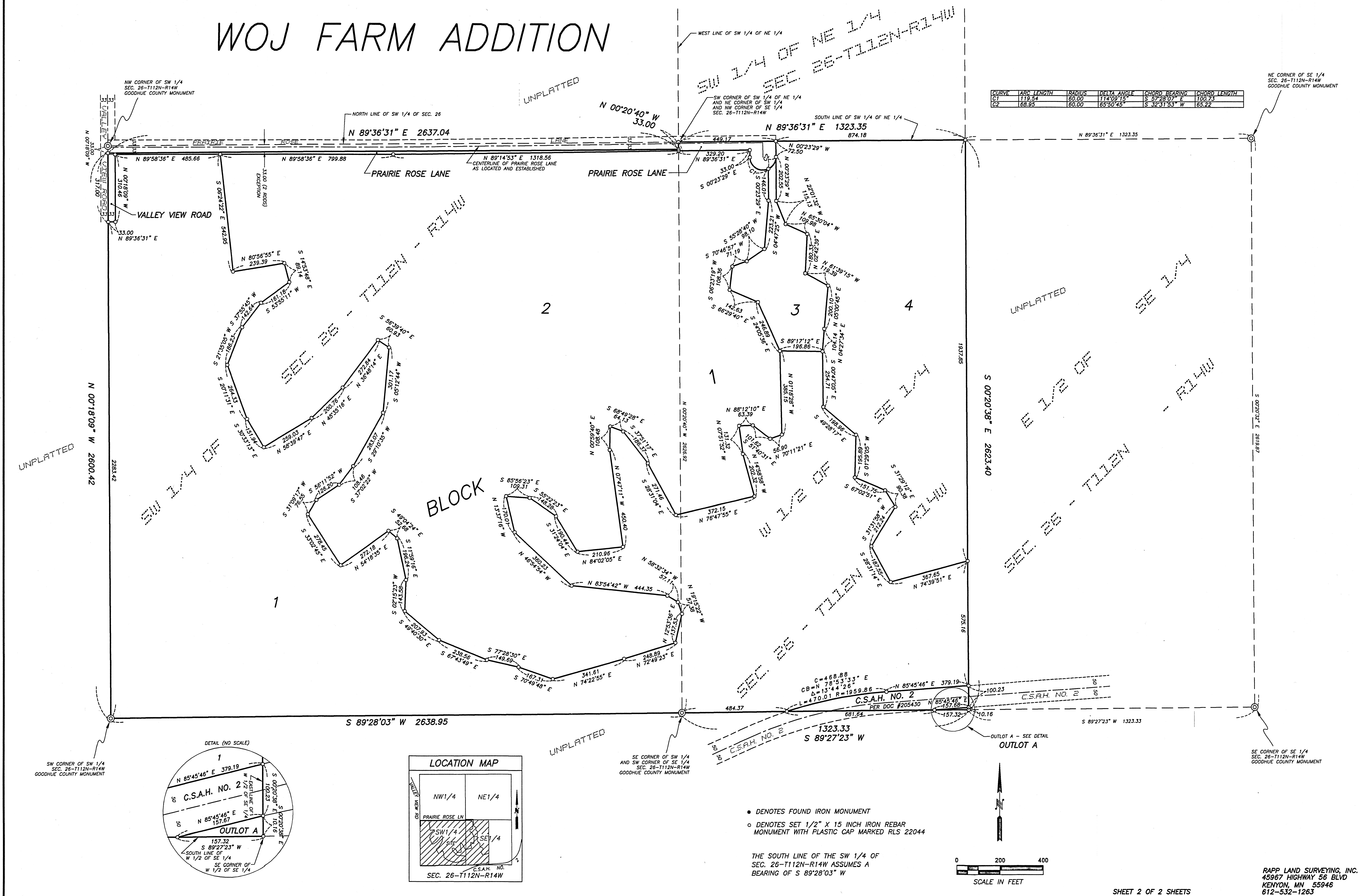
GOODHUE COUNTY RECORDER

County Recorder, County of Goodhue, State of Minnesota

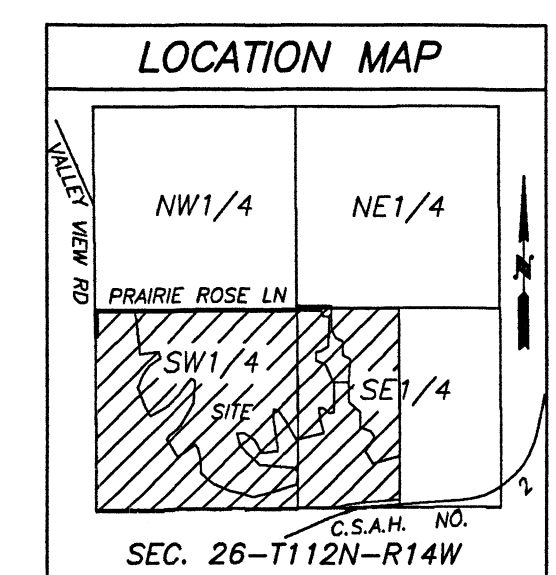
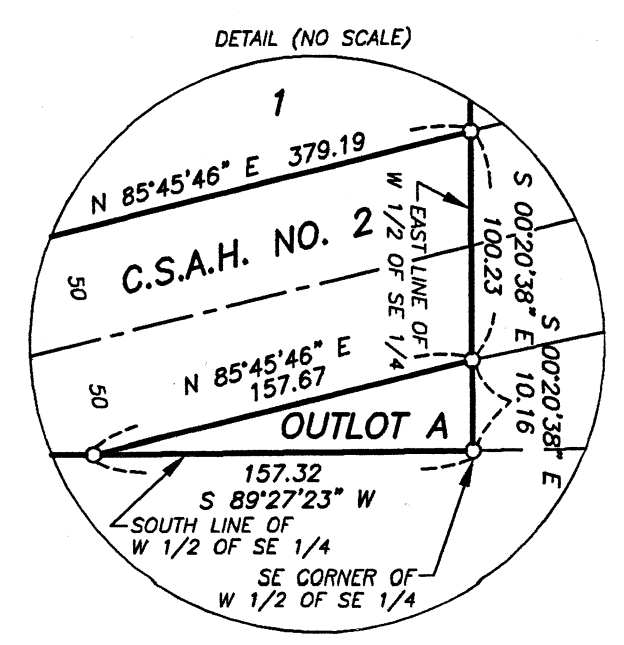
I hereby certify that this plat of WOJ FARM ADDITION was filed in the office of the County Recorder for public record on this 12th day of May, 2025, at 2:51 o'clock P.M. and was duly recorded as Document Number 705629.

Jeff Ekblad
Jeff Ekblad
Goodhue County Recorder

WOJ FARM ADDITION



CURVE	ARC LENGTH	RADIUS	DELTA ANGLE	CHORD BEARING	CHORD LENGTH
C1	119.54	60.00	114°09'15"	S 37°28'07" E	100.75
C2	68.95	60.00	65°50'45"	S 32°31'53" W	65.22



- DENOTES FOUND IRON MONUMENT
- DENOTES SET 1/2" X 15 INCH IRON REBAR MONUMENT WITH PLASTIC CAP MARKED RLS 22044

THE SOUTH LINE OF THE SW 1/4 OF SEC. 26-T112N-R14W ASSUMES A BEARING OF S 89°28'03" W

