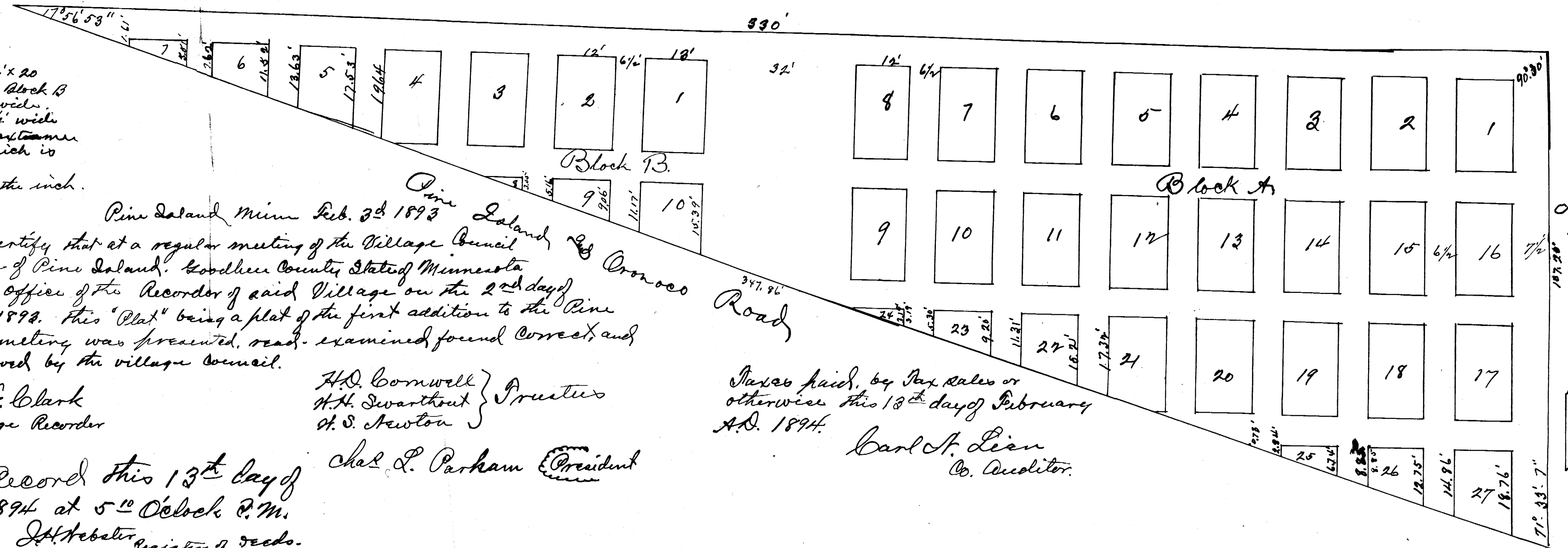


First Addition to Pine Island Cemetery.

50

Lots are 12' x 20' except lots 1-10 Block B which are 13' wide. alleys are 6 1/2' wide except alley on extreme east side which is 7 1/2' wide.

Scale 15' to the inch.



Pine Island Minn. Feb. 3^d 1893
 We hereby certify that at a regular meeting of the Village Council of the Village of Pine Island, Goodhue County, State of Minnesota held at the office of the Recorder of said Village on the 2nd day of December 1892. This "Plat" being a plat of the first addition to the Pine Island Cemetery was presented, read, examined, found correct, and duly approved by the village council.

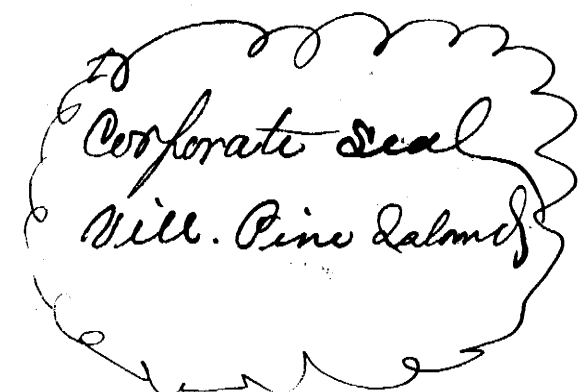
attest J. F. Clark
 Village Recorder

H. D. Cornwell } Trustees
 H. H. Swarthout }
 H. S. Newton }

Chas. L. Parkham President

Taxes paid, by Tax Sales or otherwise this 13th day of February A.D. 1894.

Carl St. Lien
 Co. Auditor.



Filed for Record this 13th day of Feby. A.D. 1894 at 5⁰⁰ O'clock P.M.
 J. H. Webster Registrar of Deeds.