

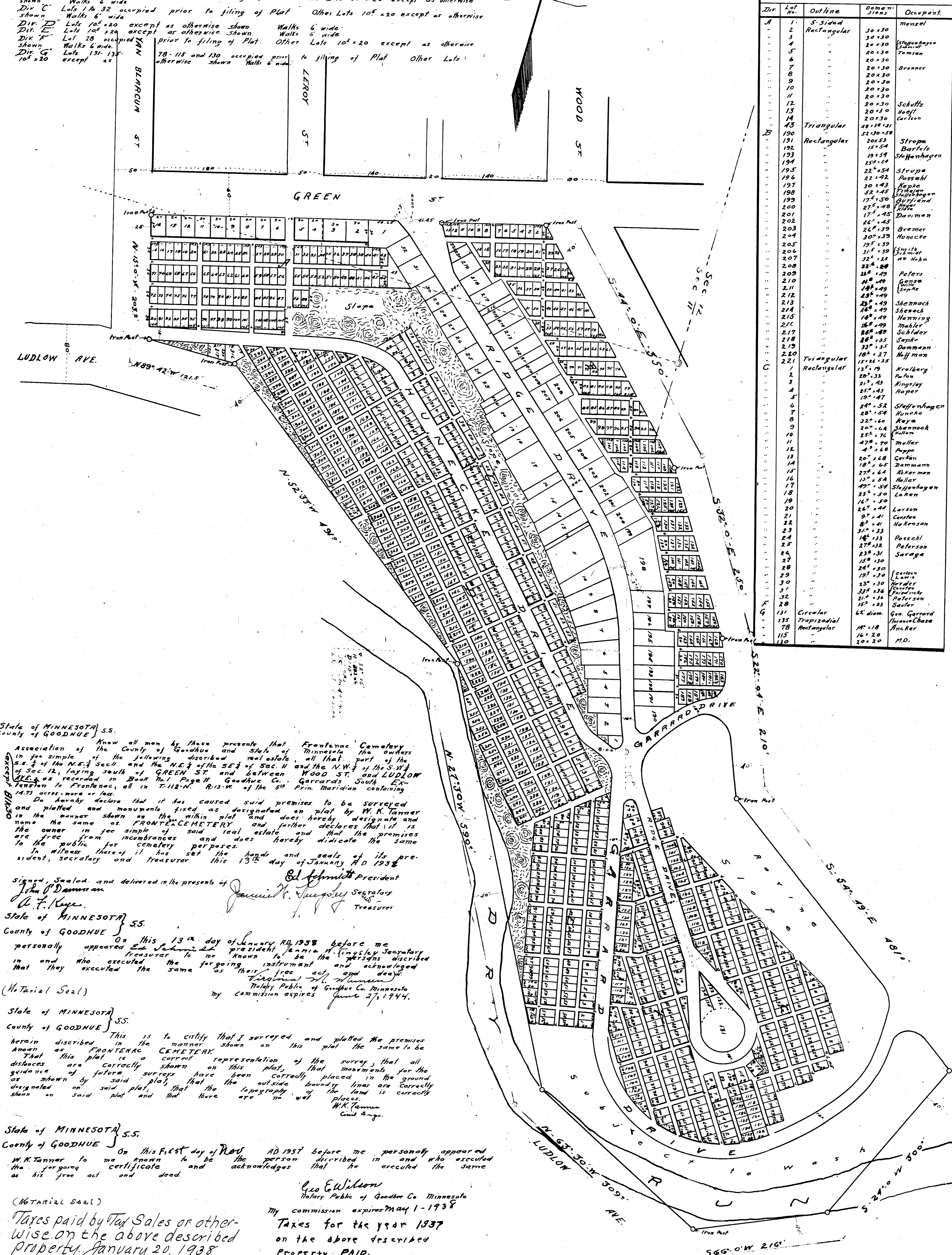
# FRONTENAC CEMETERY

FRONTENAC GOODHUE CO. MINNESOTA

SCALE 1" = 50'

NOV 1937

NOTE:-  
 Div. A Lots 14 and 15 occupied prior to filing of Plat other Lots 105x24 except as otherwise shown. Walks 6' wide.  
 Div. B Lots 190, 221, 222 occupied prior to filing of Plat other Lots 105x20 except as otherwise shown. Walks 6' wide.  
 Div. C Lots 14, 32 occupied prior to filing of Plat other Lots 105x20 except as otherwise shown. Walks 6' wide.  
 Div. D Lots 105x20 except as otherwise shown. Walks 6' wide.  
 Div. E Lots 105x20 except as otherwise shown. Walks 6' wide.  
 Div. F Lot 28 occupied prior to filing of Plat. Other Lots 105x20 except as otherwise shown. Walks 6' wide.  
 Div. G Lots 131, 132, 105x20 except as otherwise shown. Walks 6' wide.  
 78, 115 and 130 occupied prior to filing of Plat. Other Lots 105x20 except as otherwise shown. Walks 6' wide.



Div.	Lot No.	Outline	Dimensions	Occupant
A	1	S-Sided	30x30	Menzel
A	2	Rectangular	30x30	
A	3		30x30	
A	4		30x30	Stephansen
A	5		20x30	Tamson
A	6		20x30	
A	7		20x30	Brenner
A	8		20x30	
A	9		20x30	
A	10		20x30	
A	11		20x30	
A	12		20x30	Schultz
A	13		20x30	Woolf
A	14		20x30	Carlson
A	43	Triangular	40x50	
B	190	Rectangular	52x30	Stropa
B	191		20x53	Barfels
B	192		18x54	Stephansen
B	193		25x54	
B	194		22x54	Stropa
B	195		22x52	Passahl
B	196		30x43	Stephansen
B	197		32x43	Stephansen
B	198		27x50	Stephansen
B	199		27x48	Dammann
B	200		26x45	
B	201		26x45	Brenner
B	202		30x39	Muncke
B	203		19x33	Stephansen
B	204		32x25	van Hahn
B	205		32x28	Refers
B	206		32x28	Refers
B	207		32x28	Refers
B	208		32x28	Refers
B	209		32x28	Refers
B	210		32x28	Refers
B	211		32x28	Refers
B	212		32x28	Refers
B	213		32x28	Refers
B	214		32x28	Refers
B	215		32x28	Refers
B	216		32x28	Refers
B	217		32x28	Refers
B	218		32x28	Refers
B	219		32x28	Refers
B	220		32x28	Refers
B	221	Triangular	15x25	Refers
C	1	Rectangular	15x25	Arndberg
C	2		15x25	Arndberg
C	3		15x25	Arndberg
C	4		15x25	Arndberg
C	5		15x25	Arndberg
C	6		15x25	Arndberg
C	7		15x25	Arndberg
C	8		15x25	Arndberg
C	9		15x25	Arndberg
C	10		15x25	Arndberg
C	11		15x25	Arndberg
C	12		15x25	Arndberg
C	13		15x25	Arndberg
C	14		15x25	Arndberg
C	15		15x25	Arndberg
C	16		15x25	Arndberg
C	17		15x25	Arndberg
C	18		15x25	Arndberg
C	19		15x25	Arndberg
C	20		15x25	Arndberg
C	21		15x25	Arndberg
C	22		15x25	Arndberg
C	23		15x25	Arndberg
C	24		15x25	Arndberg
C	25		15x25	Arndberg
C	26		15x25	Arndberg
C	27		15x25	Arndberg
C	28		15x25	Arndberg
C	29		15x25	Arndberg
C	30		15x25	Arndberg
C	31		15x25	Arndberg
C	32		15x25	Arndberg
C	33		15x25	Arndberg
C	34		15x25	Arndberg
C	35		15x25	Arndberg
C	36		15x25	Arndberg
C	37		15x25	Arndberg
C	38		15x25	Arndberg
C	39		15x25	Arndberg
C	40		15x25	Arndberg
C	41		15x25	Arndberg
C	42		15x25	Arndberg
C	43		15x25	Arndberg
C	44		15x25	Arndberg
C	45		15x25	Arndberg
C	46		15x25	Arndberg
C	47		15x25	Arndberg
C	48		15x25	Arndberg
C	49		15x25	Arndberg
C	50		15x25	Arndberg
C	51		15x25	Arndberg
C	52		15x25	Arndberg
C	53		15x25	Arndberg
C	54		15x25	Arndberg
C	55		15x25	Arndberg
C	56		15x25	Arndberg
C	57		15x25	Arndberg
C	58		15x25	Arndberg
C	59		15x25	Arndberg
C	60		15x25	Arndberg
C	61		15x25	Arndberg
C	62		15x25	Arndberg
C	63		15x25	Arndberg
C	64		15x25	Arndberg
C	65		15x25	Arndberg
C	66		15x25	Arndberg
C	67		15x25	Arndberg
C	68		15x25	Arndberg
C	69		15x25	Arndberg
C	70		15x25	Arndberg
C	71		15x25	Arndberg
C	72		15x25	Arndberg
C	73		15x25	Arndberg
C	74		15x25	Arndberg
C	75		15x25	Arndberg
C	76		15x25	Arndberg
C	77		15x25	Arndberg
C	78		15x25	Arndberg
C	79		15x25	Arndberg
C	80		15x25	Arndberg
C	81		15x25	Arndberg
C	82		15x25	Arndberg
C	83		15x25	Arndberg
C	84		15x25	Arndberg
C	85		15x25	Arndberg
C	86		15x25	Arndberg
C	87		15x25	Arndberg
C	88		15x25	Arndberg
C	89		15x25	Arndberg
C	90		15x25	Arndberg
C	91		15x25	Arndberg
C	92		15x25	Arndberg
C	93		15x25	Arndberg
C	94		15x25	Arndberg
C	95		15x25	Arndberg
C	96		15x25	Arndberg
C	97		15x25	Arndberg
C	98		15x25	Arndberg
C	99		15x25	Arndberg
C	100		15x25	Arndberg
C	101		15x25	Arndberg
C	102		15x25	Arndberg
C	103		15x25	Arndberg
C	104		15x25	Arndberg
C	105		15x25	Arndberg
C	106		15x25	Arndberg
C	107		15x25	Arndberg
C	108		15x25	Arndberg
C	109		15x25	Arndberg
C	110		15x25	Arndberg
C	111		15x25	Arndberg
C	112		15x25	Arndberg
C	113		15x25	Arndberg
C	114		15x25	Arndberg
C	115		15x25	Arndberg
C	116		15x25	Arndberg
C	117		15x25	Arndberg
C	118		15x25	Arndberg
C	119		15x25	Arndberg
C	120		15x25	Arndberg

State of MINNESOTA ss.  
 County of GOODHUE ss.  
 Association of the County of Goodhue and State of Minnesota the undersigned in fee simple of the following described real estate, all that part of the S.E. 1/4 of the N.E. 1/4 Sec. 11 and the N.E. 1/4 of the S.E. 1/4 of Sec. 12, lying south of GREEN ST. and between WOOD ST. and LUDLOW AVE. as recorded in Book 14 Page 11 Goodhue Co. Minnesota South Extension to Frontenac, all in T.112-N. R.13-W. of the 5th Prim. Meridian containing 14.73 acres, more or less.  
 Do hereby declare that it has caused said premises to be surveyed and plotted and monuments fixed as designated on a plat by W.K. Tanner in the manner shown on the within plat and does hereby designate and name the same as FRONTENAC CEMETERY and further declares that it is the owner in fee simple of said real estate and that the premises are free from incumbrances and does hereby dedicate the same to the public for cemetery purposes.  
 In witness whereof it has set the hands and seals of its president, secretary and treasurer this 13th day of January AD 1938.

Signed, Sealed and delivered in the presence of  
 Ed. Johnson, President  
 John P. Dammann, Secretary  
 C. F. Kuyper, Treasurer

State of MINNESOTA ss.  
 County of GOODHUE ss.  
 On this 13th day of January AD 1938 before me personally appeared Ed. Johnson, president, John P. Dammann, secretary and C. F. Kuyper, treasurer to me known to be the persons described in and who executed the foregoing instrument and acknowledged that they executed the same as their free act and deed.  
 Notary Public of Goodhue Co. Minnesota  
 My commission expires June 27, 1944.

State of MINNESOTA ss.  
 County of GOODHUE ss.  
 This is to certify that I surveyed and plotted the premises herein described in the manner shown on this plat the same to be known as FRONTENAC CEMETERY representation of the survey that all distances are correctly shown on this plat, that monuments for the guidance of future surveys have been correctly placed in the ground as shown by said plat, that the outside boundary lines are correctly designated on said plat, that the topography of the land is correctly shown on said plat and that there are no wet places.  
 W.K. Tanner  
 Civil Engineer

State of MINNESOTA ss.  
 County of GOODHUE ss.  
 On this first day of Nov AD 1937 before me personally appeared W.K. Tanner to me known to be the person described in and who executed the foregoing certificate and acknowledges that he executed the same as his free act and deed.

Taxes paid by Tax Sales or otherwise on the above described property January 20, 1938  
 C. F. Kuyper  
 County Auditor  
 Goodhue County, Minn.  
 No. 127006

I hereby certify that the within instrument was filed in this office for record on this 20th day of JANUARY AD. 1938 at 10:45 o'clock A.M. and was duly recorded in Book 4 of plats on Page 9.

W. F. Fritz,  
 County Treasurer,  
 Goodhue County, Minn.  
 Gust. E. Freeman,  
 Register of Deeds,  
 Goodhue Co. Minn.